

Product datasheet for **RC209131**

RBM35A (ESRP1) (NM_017697) Human Tagged ORF Clone

Product data:

Product Type:	Expression Plasmids
Product Name:	RBM35A (ESRP1) (NM_017697) Human Tagged ORF Clone
Tag:	Myc-DDK
Symbol:	RBM35A
Synonyms:	DFNB109; RBM35A; RMB35A
Mammalian Cell Selection:	Neomycin
Vector:	pCMV6-Entry (PS100001)
E. coli Selection:	Kanamycin (25 ug/mL)



[View online »](#)

**ORF Nucleotide
Sequence:**

>RC209131 ORF sequence
 Red=Cloning site Blue=ORF Green=Tags(s)

TTTTGTAATACGACTCACTATAGGGCGGCCGGGAATTCGTCGACTGGATCCGGTACCGAGGAGATCTGCC
 GCC**CGCATCGCC**

ATGACGGCCTCTCCGATTACTTGGTGGTGCTTTTTGGGATCACTGCTGGGGCCACCGGGCCAAGCTAG
 GCTCGGATGAGAAGGAGTTGATCCTGCTGTTCTGGAAAGTCGTGGATCTGGCCAACAAGAAGGTGGGACA
 GTTGACGAAGTCTAGTTAGACCGGATCAGTTGGAAGTACGGAGGACTGCAAAGAAGAACTAAAATA
 GACGTCGAAAGCCTGTCCTCGGCGTCGACGCTGGACCAAGCCCTCCGACAGTTTAACCAAGTCAAGTCAAGT
 ATGAAGTGAATATTGGAGTAGGGACTTCTTCTGTCTGTACTGATGGGACGCTTCATGTCAGGCAAAAT
 CCTGCATCCTGAGGCTTCCAAGAAGAATGTACTATTACCTGAATGCTTCTATTCTTTTTGATCTTCGA
 AAAGAATTCAAGAAATGTTGCCCTGGTTCACCTGATATTGACAACTGGACGTTGCCACAATGACAGAGT
 ATTTAAATTTTGAAGAAGTAGTTCAAGTCTCTCGATATGGAGCCTCTCAAGTTGAAGATATGGGGAATAT
 AATTTTAGCAATGATTTTCAAGCCTTATAATCACAGGTTTTTCAAGTCCAGAGAGAGTGAATTACAAGTTT
 GAAAGTGGAACTTGCAGCAAGATGGAAGTATTGATGATAACACCGTAGTCAGGGCAGGAGTTTACCAT
 GGCAGTCTTCAGATCAAGATATTGCAAGATTCTCAAAGGACTCAATATTGCCAAGGGAGGTGCAGCACT
 TTGTCTGAATGCTCAGGGTCAAGGAACGGAGAAGCTCTGGTTAGGTTTGAAGTGAAGGACACCGAGAC
 CTAGCACTACAGAGGCACAAACATCACATGGGGACCCGGTATATTGAGGTTTACAAGCAACAGGTGAAG
 ATTTCTTAAATTTGCTGGTGGTACTTCCAATGAGGTAGCCAGTTTCTCTCAAGGAAAATCAAGTCAT
 TGTTCCGATGCGGGGCTCCCTTTCACGGCCACAGCTGAAGAAGTGGTGGCCTCTTTGGACAGCATTGC
 CCTATTACTGGGGAAAGGAAGGCATCCTCTTGTACCTACCCAGATGGTAGGCCAACAGGGGACGCTT
 TTGTCCTCTTGCCTGTGAGGAATATGCACAGAATGCGTTGAGGAAGCATAAAGACTTGTGGTAAAAG
 ATACATTGAAGTCTTCAGGAGCACAGCAGCTGAAGTTCAGCAGGTGCTGAATCGATTCTCCTCGGCCCT
 CTCATTCCAATTCCAACCCCTCCATTATTCCAGTACTACCTCAGCAATTTGTGCCCTACAAATGTTA
 GAGACTGTATACGCCTTCGAGGTCTTCCCTATGCAGCCACAATTGAGGACATCCTGGATTTCTGGGGGA
 GTTCGCCACAGATATTCTACTCATGGGTTTACATGGTTTTGAATCACCAGGGCCGCCATCAGGAGAT
 GCCTTTATCCAGATGAAGTCTGCGGACAGAGCATTATGGCTGCACAGAAGTGCATAAAAAAACATGA
 AGGACAGATATGTTGAAGTCTTTCAGTGTTCAGCTGAGGAGATGAACTTTGTGTTAATGGGGGCACTTT
 AAATCGAAATGGCTTATCCACCGCCATGTAAGTTACCATGCCTGTCTCCTCCTACACATTTCCA
 GCTCCTGTGCAGTTATCCTACAGAAGCTGCCATTTACCAGCCCTCTGTGATTTTGAATCCACGAGCAC
 TGCAGCCCTCCACAGCGTACTACCCAGCAGGCACTCAGCTCTTCAATGAAGTACACAGCGTACTATCCCAG
 CCCCCAGGTTCCCTAATAGTCTTGGCTACTTCCCTACAGCTGTAATCTTAGCGGTGTCCCTCCACAG
 CCTGGCACGGTGGTCAAGTGCAGGGCCTGGCCTACAATACTGGAGTTAAGGAAATCTTAACTTCTTCC
 AAGGTTACCAGTATGCAACCGAGGATGGACTTATACACACAAATGACCAGGCCAGGACTCTACCAAAGA
 ATGGGTTTGTATT

ACGCGTACGCGGGCCGCTCGAGCAGAACTCATCTCAGAAGAGGATCTGGCAGCAATGATATCCTGGATT
 ACAAGGATGACGACGATAAGGTTTAA

Protein Sequence: >RC209131 protein sequence
Red=Cloning site Green=Tags(s)

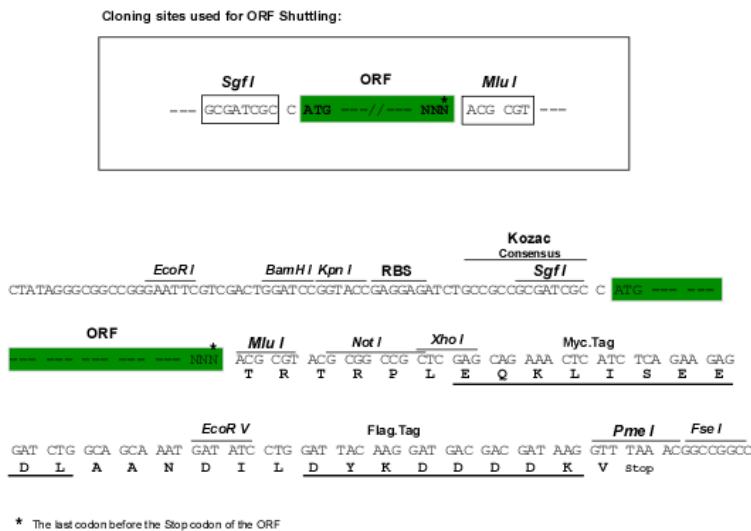
MTASPDYLVVLFGITAGATGAKLGSDEKELILLFWKVVDLANKKVGQLHEVLVSRPDQLELTEDCKEETKI
 DVESLSSASQLDQALRQFNQSVSNELNIGVGTSFCLCTDQQLHVRQILHPEASKKNVLLPECFYSFFDLR
 KEFKKCCPGSPDIDKLDVATMTEYLNFEKSSSVSRYGASQVEDMGNIILAMISEPNHRFSDPERVNYKF
 ESGTCSKMEIIDDNTVVRARGLPWQSSDQDIARFFKGLNIAKGAALCLNAQGRRNGEALVRFVSEEHDR
 LALQRHKHMGTRYIEVYKATGEDFLKIAAGTSNEVAQFLSKENQVIVRMRGLPFTATAEEVVAFFGQHC
 PITGGKEGILFVTYPDGRPTGDAFVLFACEEYAQNALRKHKDLLGKRYIELFRSTAAEVQQLNRFSSAP
 LIPLPTPIIPVLPQQFVPPTNVRDCIRLRGLPYAATIEDILDFLGEFATDIRTHGVHMLNHQGRPSGD
 AFIQMSADRAFMAAQKCHKKNMKDRYVEVFQCSAEEMNFVLMGGTLNRNGLSPPPKLPCLSPPSYTFP
 APAAVIPTAAIYQPSVILNPRALQPSTAYYPAGTQLFMNYTAYYSPPGSPNSLGYFPTAANLSGVPQP
 PGTVVRMQGLAYNTGVKEILNFFQGYQYATEDGLIHTNDQARTLPKEWVCI

TRTRPLEQKLISEEDLANDILDYKDDDDKV

Chromatograms: https://cdn.origene.com/chromatograms/mk6834_a02.zip

Restriction Sites: SgfI-MluI

Cloning Scheme:



ACCN: NM_017697

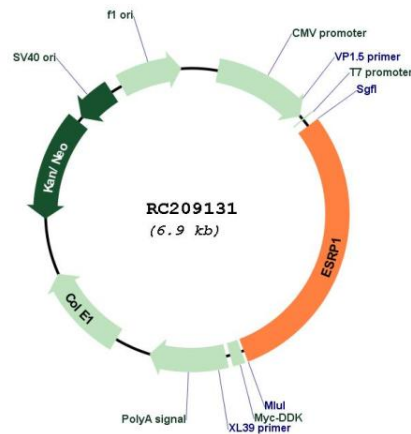
ORF Size: 2043 bp

OTI Disclaimer: The molecular sequence of this clone aligns with the gene accession number as a point of reference only. However, individual transcript sequences of the same gene can differ through naturally occurring variations (e.g. polymorphisms), each with its own valid existence. This clone is substantially in agreement with the reference, but a complete review of all prevailing variants is recommended prior to use. [More info](#)

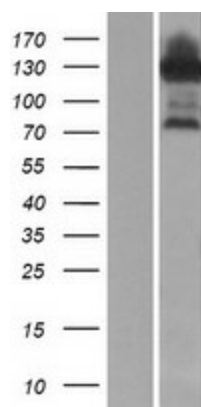
OTI Annotation: This clone was engineered to express the complete ORF with an expression tag. Expression varies depending on the nature of the gene.

Components:	The ORF clone is ion-exchange column purified and shipped in a 2D barcoded Matrix tube containing 10ug of transfection-ready, dried plasmid DNA (reconstitute with 100 ul of water).
Reconstitution Method:	<ol style="list-style-type: none"> 1. Centrifuge at 5,000xg for 5min. 2. Carefully open the tube and add 100ul of sterile water to dissolve the DNA. 3. Close the tube and incubate for 10 minutes at room temperature. 4. Briefly vortex the tube and then do a quick spin (less than 5000xg) to concentrate the liquid at the bottom. 5. Store the suspended plasmid at -20°C. The DNA is stable for at least one year from date of shipping when stored at -20°C.
RefSeq:	<u>NM_017697.2</u> , <u>NP_060167.2</u>
RefSeq Size:	3806 bp
RefSeq ORF:	2046 bp
Locus ID:	54845
UniProt ID:	<u>Q6NXG1</u>
Cytogenetics:	8q22.1
Domains:	RRM
MW:	75.6 kDa
Gene Summary:	ESPR1 is an epithelial cell-type-specific splicing regulator (Warzecha et al., 2009 [PubMed 19285943]).[supplied by OMIM, Aug 2009]

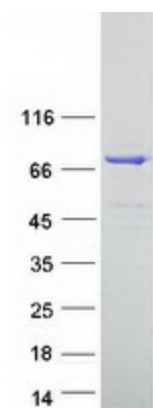
Product images:



Circular map for RC209131



Western blot validation of overexpression lysate (Cat# [LY413607]) using anti-DDK antibody (Cat# [TA50011-100]). Left: Cell lysates from untransfected HEK293T cells; Right: Cell lysates from HEK293T cells transfected with RC209131 using transfection reagent MegaTran 2.0 (Cat# [TT210002]).



Coomassie blue staining of purified ESRP1 protein (Cat# [TP309131]). The protein was produced from HEK293T cells transfected with ESRP1 cDNA clone (Cat# RC209131) using MegaTran 2.0 (Cat# [TT210002]).