

Product datasheet for RC209128

DUSP5 (NM_004419) Human Tagged ORF Clone

Product data:

Product Type:	Expression Plasmids
Product Name:	DUSP5 (NM_004419) Human Tagged ORF Clone
Tag:	Myc-DDK
Symbol:	DUSP5
Synonyms:	DUSP; HVH3
Mammalian Cell Selection:	Neomycin
Vector:	pCMV6-Entry (PS100001)
E. coli Selection:	Kanamycin (25 ug/mL)
ORF Nucleotide Sequence:	>RC209128 ORF sequence Red=Cloning site Blue=ORF Green=Tags(s)

TTTTGTAATACGACTCACTATAGGGCGGCCGGAATTCGTCGACTGGATCCGGTACCGAGGAGATCTGCC
GCC**CGATCGCC**

ATGAAGGTCACGTCGCTCGACGGGCGCCAGCTGCGCAAGATGCTCCGCAAGGAGGCGGGCGCGCTGCG
TGGTGCTCGACTGCCGGCCCTATCTGGCCTTCGCTGCCTCGAACGTGCGCGGCTCGCTCAACGTCAACCT
CAACTCGGTGGTGTGCGGGCGGGCCGGGGCGGCGGTGTGCGGCGCTACGTGCTGCCGACGAGGCG
GCGCGCGCGGGCTCCTGCAGGAGGCGGGCGGGCGGTGCGGGCGGTGGTGGTGTGACCAGGGCAGCC
GCCACTGGCAGAAGCTGCGAGAGGAGAGCGCCGCGGTGTCGTCCTCACCTCGTACTCGCTTGCCTACC
CGCCGGCCCGGGTCTACTTCCCAAAGGGGATATGAGACTTCTACTCGGAATATCCTGAGTGTTC
GTGGATGTAAAACCCATTTACAAGAGAAGATTGAGAGTGAGAGAGCCCTCATCAGCCAGTGTGAAAAC
CAGTGGTAAATGTGAGCTACAGGCCAGCTTATGACCAGGGTGGCCAGTTGAAATCCTTCCCTTCTCTA
CCTTGGAAAGTGCCTACCATGCATCCAAGTGCGAGTTTCTCGCCAACTTGCACATCACAGCCCTGTGAAT
GTCTCCGACGGACCTCCGAGGCTGCATGACCCACCTACACTACAAATGGATCCCTGTGGAAGACAGCC
ACACGGCTGACATTAGCTCCCACTTTCAAGAAGCAATAGACTTCACTGACTGTGTGAGGAAAAGGGAGG
CAAGTCTGGTCCACTGTGAGGCTGGGATCTCCCGTTCAACCACCATCTGCATGGCTTACCTTATGAAG
ACCAAGCAGTTCGGCCTGAAGGAGGCTTCGATTACATCAAGAGGAGGAGCATGGTCTCGCCCACT
TTGGCTTATGGCCAGCTCCTGCAGTACGAATCTGAGATCCTGCCCTCCAGCCCAACCCAGCCTCC
CTCCTGCCAAGGGGAGGAGCAGGCTCTTCACTGATAGGCCATTTGCAGACACTGAGCCCTGACATGCAG
GGTGCCTACTGCACATTCCTGCCTCGGTGCTGGCACCAGTGCCTACCCACTCAACAGTCTCAGAGCTCA
GCAGAAGCCCTGTGGCAACGGCCACATCCTGC

ACGCGTACGCGGCCGCTCGAGCAGAACTCATCTCAGAAGAGGATCTGGCAGCAATGATATCCTGGATT
ACAAGGATGACGACGATAAGGTTTAA



[View online »](#)

Protein Sequence: >RC209128 protein sequence
Red=Cloning site Green=Tags(s)

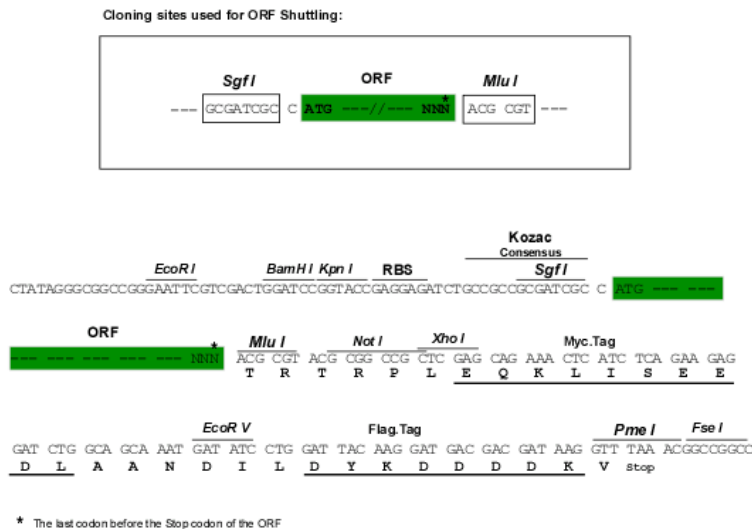
MKVTSLDGRQLRKMLRKEAAARCVVLD CRPYLAF AASNVRGSLNVLNSVVLRRARGGAVSARYVLPDEA
 ARARLLQEGGGVA AVVLDQGSRHWQKLREESAARVVL TSLLA CLPAGPRVYFLKGGYETFYSEYPECC
 VDVKPISQEKIESERAL ISQCGKPVVNVSYPAYDQGGPVEILPFLYLGSAYHASKCEFLANLHITALLN
 VSRRTSEACMTHLHYKWIPVEDSHTADISSHFQEAIDF IDCVREKGGKVLVHCEAGISRSP TICMAYLMK
 TKQFRLKEAFDYIKQRRSMVSPNFGFMGQLLQYESEILPSTPNPQPPSCQGEAAGSSLIGHLQTLSPDMQ
 GAYCTFPASVLAPVPTHSTVSELSRSPVATATSC

TRTRPLEQKLISEEDLAANDILDYKDDDDKV

Chromatograms: https://cdn.origene.com/chromatograms/mk6227_h09.zip

Restriction Sites: SgfI-MluI

Cloning Scheme:



ACCN: NM_004419

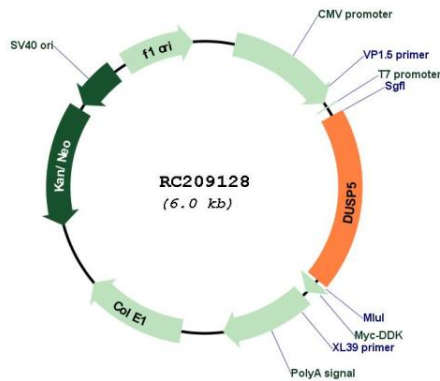
ORF Size: 1152 bp

OTI Disclaimer: Due to the inherent nature of this plasmid, standard methods to replicate additional amounts of DNA in E. coli are highly likely to result in mutations and/or rearrangements. Therefore, OriGene does not guarantee the capability to replicate this plasmid DNA. Additional amounts of DNA can be purchased from OriGene with batch-specific, full-sequence verification at a reduced cost. Please contact our customer care team at custsupport@origene.com or by calling 301.340.3188 option 3 for pricing and delivery.

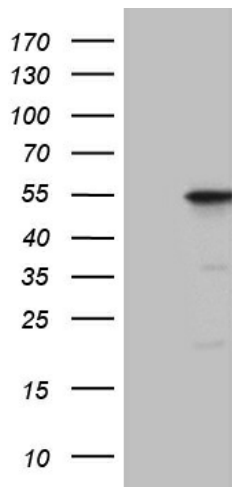
The molecular sequence of this clone aligns with the gene accession number as a point of reference only. However, individual transcript sequences of the same gene can differ through naturally occurring variations (e.g. polymorphisms), each with its own valid existence. This clone is substantially in agreement with the reference, but a complete review of all prevailing variants is recommended prior to use. [More info](#)

OTI Annotation:	This clone was engineered to express the complete ORF with an expression tag. Expression varies depending on the nature of the gene.
Components:	The ORF clone is ion-exchange column purified and shipped in a 2D barcoded Matrix tube containing 10ug of transfection-ready, dried plasmid DNA (reconstitute with 100 ul of water).
Reconstitution Method:	<ol style="list-style-type: none">1. Centrifuge at 5,000xg for 5min.2. Carefully open the tube and add 100ul of sterile water to dissolve the DNA.3. Close the tube and incubate for 10 minutes at room temperature.4. Briefly vortex the tube and then do a quick spin (less than 5000xg) to concentrate the liquid at the bottom.5. Store the suspended plasmid at -20°C. The DNA is stable for at least one year from date of shipping when stored at -20°C.
RefSeq:	NM_004419.2
RefSeq Size:	2545 bp
RefSeq ORF:	1155 bp
Locus ID:	1847
UniProt ID:	Q16690
Cytogenetics:	10q25.2
Domains:	DSPc, RHOD, PTPc_motif
Protein Families:	Phosphatase
Protein Pathways:	MAPK signaling pathway
MW:	42.1 kDa
Gene Summary:	<p>The protein encoded by this gene is a member of the dual specificity protein phosphatase subfamily. These phosphatases inactivate their target kinases by dephosphorylating both the phosphoserine/threonine and phosphotyrosine residues. They negatively regulate members of the mitogen-activated protein (MAP) kinase superfamily (MAPK/ERK, SAPK/JNK, p38), which are associated with cellular proliferation and differentiation. Different members of the family of dual specificity phosphatases show distinct substrate specificities for various MAP kinases, different tissue distribution and subcellular localization, and different modes of inducibility of their expression by extracellular stimuli. This gene product inactivates ERK1, is expressed in a variety of tissues with the highest levels in pancreas and brain, and is localized in the nucleus. [provided by RefSeq, Jul 2008]</p>

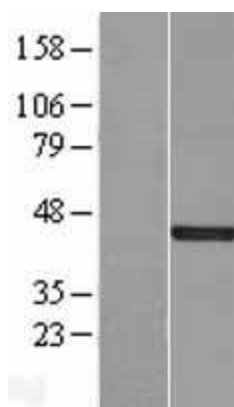
Product images:



Circular map for RC209128



HEK293T cells were transfected with the pCMV6-ENTRY control (Cat# [PS100001], Left lane) or pCMV6-ENTRY DUSP5 (Cat# RC209128, Right lane) cDNA for 48 hrs and lysed. Equivalent amounts of cell lysates (5 ug per lane) were separated by SDS-PAGE and immunoblotted with anti-DUSP5 (Cat# [TA811007])(1:2000). Positive lysates [LY417998] (100ug) and [LC417998] (20ug) can be purchased separately from OriGene.



Western blot validation of overexpression lysate (Cat# [LY417998]) using anti-DDK antibody (Cat# [TA50011-100]). Left: Cell lysates from untransfected HEK293T cells; Right: Cell lysates from HEK293T cells transfected with RC209128 using transfection reagent MegaTran 2.0 (Cat# [TT210002]).