

Product datasheet for RC209123

SSPN (NM_005086) Human Tagged ORF Clone

Product data:

Product Type:	Expression Plasmids
Product Name:	SSPN (NM_005086) Human Tagged ORF Clone
Tag:	Myc-DDK
Symbol:	SSPN
Synonyms:	DAGA5; KRAG; NSPN; SPN1; SPN2
Mammalian Cell Selection:	Neomycin
Vector:	pCMV6-Entry (PS100001)
E. coli Selection:	Kanamycin (25 ug/mL)
ORF Nucleotide Sequence:	>RC209123 ORF sequence Red=Cloning site Blue=ORF Green=Tags(s)

TTTTGTAATACGACTCACTATAGGGCGGCCGGAATTCGTCGACTGGATCCGGTACCGAGGAGATCTGCC
GCC**CGATCGCC**

ATGGGCAAGAACAAGCAGCCACGCGCCAGCAGAGGCAGGGGGCCCGCCGGCCGGACGCCGCTGGGC
CCGACGACATGGAGCCGAAGAAGGGCACGGGGCCCCAAGGAGTGCGGGGAGGAGAGCCCCGGACCTG
CTGCGGCTGCCGTTCCCGCTGCTGCTCGCCCTGCTGCAGCTGGCCCTGGGCATCGCCGTGACCGTGGTG
GGCTTCTCATGGCGAGCATCAGCTCCTCCCTGCTAGTCAGGGACTCCATTTGGGCTGGGATCATTG
TCTGCTTAGTGGCTATCTTGGCTTGTATGCTTTGTGTCTCATATCAGTTGACGAACGGACATGTAT
TCAATTTTCTATGAAACTGTTATACTTTCTGCTGAGTGCCTGGCCCTGACGGTCTGTGTCTGGCCGTG
GCCTTTGCCGCCACCACTATTCGCAGCTCACACAGTTTACCTGTGAGACCACACTCGACTCTTGCCAGT
GCAAACAGCCCTCCTCGGAGCCGCTCAGCAGGACCTTTGTTTACCGGGATGTGACGGACTGTACCAGCGT
CACTGGCACTTTCAAACGTTCTTACTCATCCAGATGATTCTTAATTTGGTCTGCGGCCTTGTGTCTTG
TTGGCCTGCTTTGTGATGTGAAACATAGGTACCAGTCTTCTATGTGGGTGTCAGGATATGCTCCCTCA
CGGCTTCCGAAGGCCCCAGCAAAGATC

ACGCGTACGCGGCCGCTCGAGCAGAACTCATCTCAGAAGAGGATCTGGCAGCAAATGATATCCTGGATT
ACAAGGATGACGACGATAAGGTTTAA



[View online »](#)

Protein Sequence: >RC209123 protein sequence
Red=Cloning site Green=Tags(s)

MGKNKQPRGQQRQGGPPAADAAGPDDMEPKKGTGAPKECGEEEPRTCCGCRFPLLLALLQLALGIAVTVV
 GFLMASISSLLVRDTPFWAGIIVCLVAYLGLFMLCVSYQVDERTCIQFSMKLLYFLLSALGLTVCVLAV
 AFAAHHYSQLTQFTCETILDSCQCKLPSSSEPLSRTFVYRDVTDCTSVTGTGFKLFLLIQMILNLVCGLVCL
 LACFVMWKHRYQVFYVGVIRICSLTASEGPQQKI

TRTRPLEQKLISEEDLAANDILDYKDDDDKV

Chromatograms: https://cdn.origene.com/chromatograms/mk6796_e01.zip

Restriction Sites: SgfI-MluI

Cloning Scheme:



ACCN: NM_005086

ORF Size: 729 bp

OTI Disclaimer: The molecular sequence of this clone aligns with the gene accession number as a point of reference only. However, individual transcript sequences of the same gene can differ through naturally occurring variations (e.g. polymorphisms), each with its own valid existence. This clone is substantially in agreement with the reference, but a complete review of all prevailing variants is recommended prior to use. [More info](#)

OTI Annotation: This clone was engineered to express the complete ORF with an expression tag. Expression varies depending on the nature of the gene.

Components: The ORF clone is ion-exchange column purified and shipped in a 2D barcoded Matrix tube containing 10ug of transfection-ready, dried plasmid DNA (reconstitute with 100 ul of water).

Reconstitution Method:

1. Centrifuge at 5,000xg for 5min.
2. Carefully open the tube and add 100ul of sterile water to dissolve the DNA.
3. Close the tube and incubate for 10 minutes at room temperature.
4. Briefly vortex the tube and then do a quick spin (less than 5000xg) to concentrate the liquid at the bottom.
5. Store the suspended plasmid at -20°C. The DNA is stable for at least one year from date of shipping when stored at -20°C.

RefSeq: [NM_005086.5](#)

RefSeq Size: 4547 bp

RefSeq ORF: 732 bp

Locus ID: 8082

UniProt ID: [Q14714](#)

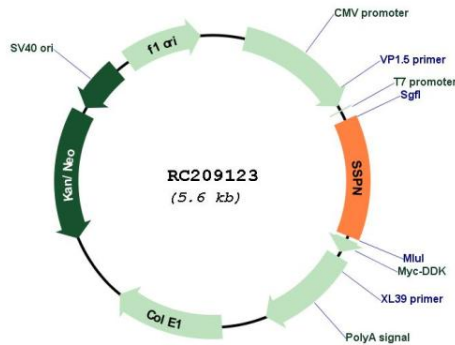
Cytogenetics: 12p12.1

Protein Families: Druggable Genome, Transmembrane

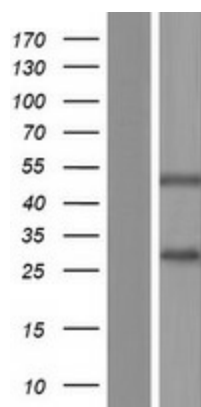
MW: 26.6 kDa

Gene Summary: This gene encodes a member of the dystrophin-glycoprotein complex (DGC). The DGC spans the sarcolemma and is comprised of dystrophin, syntrophin, alpha- and beta-dystroglycans and sarcoglycans. The DGC provides a structural link between the subsarcolemmal cytoskeleton and the extracellular matrix of muscle cells. Two alternatively spliced transcript variants that encode different protein isoforms have been described. [provided by RefSeq, Oct 2008]

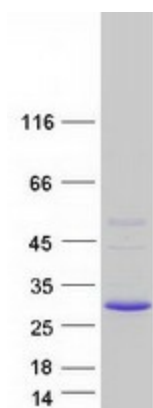
Product images:



Circular map for RC209123



Western blot validation of overexpression lysate (Cat# [LY417535]) using anti-DDK antibody (Cat# [TA50011-100]). Left: Cell lysates from untransfected HEK293T cells; Right: Cell lysates from HEK293T cells transfected with RC209123 using transfection reagent MegaTran 2.0 (Cat# [TT210002]).



Coomassie blue staining of purified SSPN protein (Cat# [TP309123]). The protein was produced from HEK293T cells transfected with SSPN cDNA clone (Cat# RC209123) using MegaTran 2.0 (Cat# [TT210002]).