

Product datasheet for RC209122

Artemin (ARTN) (NM_057090) Human Tagged ORF Clone

Product data:

Product Type: Expression Plasmids
Product Name: Artemin (ARTN) (NM_057090) Human Tagged ORF Clone
Tag: Myc-DDK
Symbol: Artemin
Synonyms: ART; ENOVIN; EVN; NBN
Mammalian Cell Selection: Neomycin
Vector: pCMV6-Entry (PS100001)
E. coli Selection: Kanamycin (25 ug/mL)
ORF Nucleotide Sequence: >RC209122 representing NM_057090
Red=Cloning site Blue=ORF Green=Tags(s)

TTTTGTAATACGACTCACTATAGGGCGGCCGGAATTCGTCGACTGGATCCGGTACCGAGGAGATCTGCC
GCC**CGATCGCC**

ATGGAACCTGGACTTGGAGGCCTCTCCACGCTGTCCCACTGCCCTGGCCTAGGCAGCAGGCTCCACTTG
GTCTCTCCGCGCAGCCTGCCCTGTGGCCACCCTGGCCGCTCTGGCTCTGCTGAGCAGCGTCGCAGAGGC
CTCCCTGGGCTCCGCGCCCCGACGCCCTGCCCCCGGAAGCCCCCGCCTGTCTGGCGTCCCCCGCC
GGCCACCTGCCGGGGGACGCACGGCCCGCTGGTGCAGTGAAGAGCCCCGGGGCCGCCCGCAGCCTT
CTCGGCCCGCCCCCGCCGCTGCACCCCATCTGCTTCCCCGGGGGGCCGCGGGCGGGCTGG
GGCCCCGGGAGCCGCGCTCGGGCAGCGGGGGCGCGGGGCTGCCGCTGCGCTCGCAGCTGGTGCCGGT
CGCGCGCTCGGCCTGGCCACCCTCCGACGAGCTGGTGCCTTCCGCTTCTGCAGCGGCTCCTGCCGCC
GCGCGCGCTCTCCACACGACCTCAGCCTGGCCAGCCTACTGGGCGCCGGGGCCCTGCGACCGCCCCGGG
CTCCCGGCCCGTCAAGCAGCCCTGCTGCCGACCCACGCGCTACGAAGCGGTCTCCTTCATGGACGTCAAC
AGCACCTGGAGAACCGTGGACCGCCTCTCCGCCACCGCCTGCGGCTGCCTGGG

ACGCGTACGCGGGCGCTCGAGCAGAACTCATCTCAGAAGAGGATCTGGCAGCAAATGATATCCTGGATT
ACAAGGATGACGACGATAAGGTTAA



[View online »](#)

Protein Sequence: >RC209122 representing NM_057090
Red=Cloning site Green=Tags(s)

MELGLGGLSTLSHCPWPRQQAPLGLSAQPALWPTLAALALLSSVAEASLGSAPRSPAPREGPPPVLASPA
 GHLPGGRTARWCSGRARRPPPPQPSRPAPPPAPPSSALPRGGRAARAGGPGSRARAAGARGCRLRSQLVPV
 RALGLGHRSDLVRFRCSGSRRRSPHDLASLLGAGALRPPPGSRPVSQPCCRPTRYEAVSFMDVN
 STWRTVDRLSATACGLG

TRTRPLEQKLISEEDLAANDILDYKDDDDKV

Restriction Sites: Sgfl-MluI

Cloning Scheme:

Cloning sites used for ORF Shuttling:



* The last codon before the Stop codon of the ORF

ACCN: NM_057090

ORF Size: 684 bp

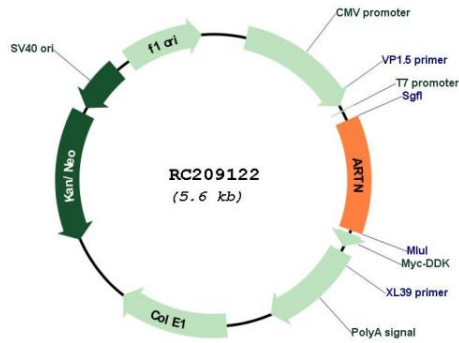
OTI Disclaimer: The molecular sequence of this clone aligns with the gene accession number as a point of reference only. However, individual transcript sequences of the same gene can differ through naturally occurring variations (e.g. polymorphisms), each with its own valid existence. This clone is substantially in agreement with the reference, but a complete review of all prevailing variants is recommended prior to use. [More info](#)

OTI Annotation: This clone was engineered to express the complete ORF with an expression tag. Expression varies depending on the nature of the gene.

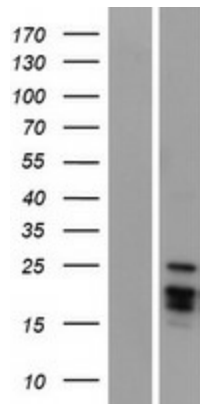
Components: The ORF clone is ion-exchange column purified and shipped in a 2D barcoded Matrix tube containing 10ug of transfection-ready, dried plasmid DNA (reconstitute with 100 ul of water).

Reconstitution Method:	<ol style="list-style-type: none">1. Centrifuge at 5,000xg for 5min.2. Carefully open the tube and add 100ul of sterile water to dissolve the DNA.3. Close the tube and incubate for 10 minutes at room temperature.4. Briefly vortex the tube and then do a quick spin (less than 5000xg) to concentrate the liquid at the bottom.5. Store the suspended plasmid at -20°C. The DNA is stable for at least one year from date of shipping when stored at -20°C.
Note:	Plasmids are not sterile. For experiments where strict sterility is required, filtration with 0.22um filter is required.
RefSeq:	NM_057090.2
RefSeq Size:	1162 bp
RefSeq ORF:	687 bp
Locus ID:	9048
UniProt ID:	Q5T4W7
Cytogenetics:	1p34.1
Protein Families:	Druggable Genome, Secreted Protein
MW:	18.8 kDa
Gene Summary:	<p>This gene encodes a secreted ligand of the glial cell line-derived neurotrophic factor (GDNF) subfamily and TGF-beta (transforming growth factor-beta) superfamily of proteins. Ligands of this family bind various TGF-beta receptors leading to recruitment and activation of SMAD family transcription factors that regulate gene expression. The encoded preproprotein is proteolytically processed to generate each subunit of the disulfide-linked homodimer. This protein signals through the RET receptor and GFR alpha 3 coreceptor, and supports the survival of a number of peripheral neuron populations and at least one population of dopaminergic CNS neurons. This protein has also been shown to promote tumor growth, metastasis, and drug resistance in mammary carcinoma. [provided by RefSeq, Aug 2016]</p>

Product images:



Circular map for RC209122



Western blot validation of overexpression lysate (Cat# [LY427855]) using anti-DDK antibody (Cat# [TA50011-100]). Left: Cell lysates from untransfected HEK293T cells; Right: Cell lysates from HEK293T cells transfected with [RC227744] using transfection reagent MegaTran 2.0 (Cat# [TT210002]).