

## Product datasheet for **RC209117**

### **MST3 (STK24) (NM\_001032296) Human Tagged ORF Clone**

#### **Product data:**

Product Type:	Expression Plasmids
Product Name:	MST3 (STK24) (NM_001032296) Human Tagged ORF Clone
Tag:	Myc-DDK
Symbol:	MST3
Synonyms:	HEL-S-95; MST3; MST3B; STE20; STK3
Mammalian Cell Selection:	Neomycin
Vector:	pCMV6-Entry (PS100001)
E. coli Selection:	Kanamycin (25 ug/mL)



[View online »](#)

**ORF Nucleotide Sequence:**

>RC209117 representing NM\_001032296  
 Red=Cloning site Blue=ORF Green=Tags(s)

TTTTGTAATACGACTCACTATAGGGCGGCCGGAATTCGTCGACTGGATCCGGTACCGAGGAGATCTGCC  
 GCC**GCGATCGCC**

ATGGCTCACTCCCGGTGCAGTCGGCCTGCCCGCATGCAGAACCTAAGGCAGACCCAGAAGAGCTTT  
 TTACAAAAGTAGAGAAAATTGGGAAGGGCTCCTTTGGAGAGGTGTTCAAAGGCATTGACAATCGGACTCA  
 GAAAGTGGTTGCCATAAAGATCATTGATCTGGAAGAAGCTGAAGATGAGATAGAGGACATTCAACAAGAA  
 ATCACAGTGTGAGTCAGTGTGACAGTCCATATGTAACCAATATTATGGATCCTATCTGAAGGATACAA  
 AATTATGGATAAATGGAATATCTTGGTGGAGGCTCCGCACTAGATCTATTAGAACCCTGGCCATTAGA  
 TGAAACCCAGATCGTACTATATTAAGAGAAAATACTGAAAGGACTCGATTATCTCCATTCGGAGAAGAAA  
 ATCCACAGAGACATTAAGCGGCCAACGTCCTGCTGTCTGAGCATGGCGAGGTGAAGCTGGCGGACTTTG  
 GCGTGGCTGGCCAGCTGACAGACACCCAGATCAAAGGAACACCTTCGTGGGCACCCATTCTGGATGGC  
 ACCCGAGGTCATCAAACAGTCGGCTATGACTCGAAGGCAGACATCTGGTCCCTGGGCATAACAGCTATT  
 GAACCTGCAAGAGGGGAACACCTCATTCCGAGCTGCACCCATGAAAGTTTTATTCTCATTCCAAAGA  
 ACAACCCACCGAGCTTGAAGGAAACTACAGTAAACCCCTCAAGGAGTTTGTGGAGGCCTGTTTGAATAA  
 GGAGCCGAGCTTTAGACCACTGCTAAGGAGTTATTGAAGCACAAGTTTATACTACGCAATGCAAAGAAA  
 ACTTCTACTTGACCGAGCTCATCGACAGGTACAAGAGATGGAAGGCCGAGCAGAGCCATGACGACTCGA  
 GCTCCGAGGATCCGACGCGGAAACAGATGGCCAAAGCCTCGGGGGCAGTGATTCTGGGGACTGGATCTT  
 CACAATCCGAGAAAAAGATCCCAAGAATCTCGAGAATGGAGCTCTTCAGCCATCGGACTTGACAGAAAT  
 AAGATGAAAGACATCCCAAGAGGCCTTCTCTCAGTGTATCTACAATTATTTCTCTCTGTTTGCAG  
 AGTTGAAGGAGAAGAGCCAGGCGTGCAGGGAAGCTTGGGGTCCATTGAAGAGCTGCGAGGGGCCATCTA  
 CCTAGCGGAGGAGGCGTGCCTGGCATCTCCGACACCATGGTGGCCAGCTCGTGCAGCGGCTCCAGAGA  
 TACTCTAAGTGGTGGAGGAATTCATCCAC

**ACGCGT**ACGCGGCCGCTCGAGCAGAAACTCATCTCAGAAGAGGATCTGGCAGCAATGATATCTGGATT  
 ACAAGGATGACGACGATAAGGTTTAA

**Protein Sequence:**

>RC209117 representing NM\_001032296  
 Red=Cloning site Green=Tags(s)

MAHSPVQSGLPGMQNLKADPEELFTKLEKIGKGSFGEVFKGIDNRTQKVVAIKIIDLEEADEIEDIQQE  
 ITVLSQCDSPYVTKYYGSYLKDTKLWIIMEYLGGSALDLEPGPLDETQIATILREILKGLDYLHSEKK  
 IHRDIKAANVLLSEHGEVKLADFGVAGQLTDTQIKRNTFVGTPFWMAPEVIKQSAYDSKADIWSLGITAI  
 ELARGEPPHSELHPMKVLFLLIPKNNPPTLEGNYSKPLKEFVEACLNKEPSFRPTAKELLKHKFILRNACK  
 TSYLTELIDRYKRWKAEQSHDDSSSESDAETDQGASGGSDSGDWIFTIREKDPKNLENGALQPSDLDRN  
 KMKDIPKRPFSQCLSTIISPLFAELKEKSQACGGNLGSIEELRGAIYLAEEACPGISDTMVAQLVQRLQR  
 YLSGGGTSSH

**TR**TRPLEQKLISEEDLAANDILDYKDDDDKV

**Chromatograms:**

[https://cdn.origene.com/chromatograms/mk8077\\_b12.zip](https://cdn.origene.com/chromatograms/mk8077_b12.zip)

**Restriction Sites:**

Sgfl-Mlul

**Cloning Scheme:**


**ACCN:** NM\_001032296

**ORF Size:** 1293 bp

**OTI Disclaimer:** Due to the inherent nature of this plasmid, standard methods to replicate additional amounts of DNA in E. coli are highly likely to result in mutations and/or rearrangements. Therefore, OriGene does not guarantee the capability to replicate this plasmid DNA. Additional amounts of DNA can be purchased from OriGene with batch-specific, full-sequence verification at a reduced cost. Please contact our customer care team at [custsupport@origene.com](mailto:custsupport@origene.com) or by calling 301.340.3188 option 3 for pricing and delivery.

The molecular sequence of this clone aligns with the gene accession number as a point of reference only. However, individual transcript sequences of the same gene can differ through naturally occurring variations (e.g. polymorphisms), each with its own valid existence. This clone is substantially in agreement with the reference, but a complete review of all prevailing variants is recommended prior to use. [More info](#)

**OTI Annotation:** This clone was engineered to express the complete ORF with an expression tag. Expression varies depending on the nature of the gene.

**Components:** The ORF clone is ion-exchange column purified and shipped in a 2D barcoded Matrix tube containing 10ug of transfection-ready, dried plasmid DNA (reconstitute with 100 ul of water).

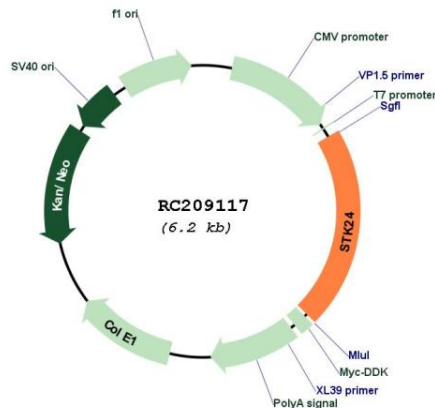
- Reconstitution Method:**
1. Centrifuge at 5,000xg for 5min.
  2. Carefully open the tube and add 100ul of sterile water to dissolve the DNA.
  3. Close the tube and incubate for 10 minutes at room temperature.
  4. Briefly vortex the tube and then do a quick spin (less than 5000xg) to concentrate the liquid at the bottom.
  5. Store the suspended plasmid at -20°C. The DNA is stable for at least one year from date of shipping when stored at -20°C.

**RefSeq:** [NM\\_001032296.3](#)

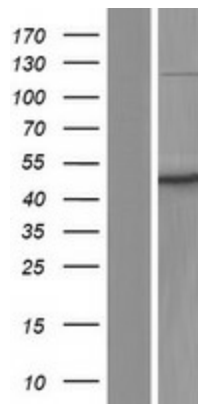
RefSeq Size: 4624 bp  
 RefSeq ORF: 1296 bp  
 Locus ID: 8428  
 UniProt ID: [Q9Y6E0](#)  
 Cytogenetics: 13q32.2  
 Protein Families: Druggable Genome, Protein Kinase  
 MW: 47.7 kDa

**Gene Summary:** This gene encodes a serine/threonine protein kinase that functions upstream of mitogen-activated protein kinase (MAPK) signaling. The encoded protein is cleaved into two chains by caspases; the N-terminal fragment (MST3/N) translocates to the nucleus and promotes programmed cells death. There is a pseudogene for this gene on chromosome X. Alternative splicing results in multiple transcript variants. [provided by RefSeq, Nov 2013]

### Product images:



Circular map for RC209117



Western blot validation of overexpression lysate (Cat# [LY422305]) using anti-DDK antibody (Cat# [TA50011-100]). Left: Cell lysates from untransfected HEK293T cells; Right: Cell lysates from HEK293T cells transfected with RC209117 using transfection reagent MegaTran 2.0 (Cat# [TT210002]).