

## Product datasheet for **RC209105**

### CC2D1A (NM\_017721) Human Tagged ORF Clone

#### Product data:

Product Type:	Expression Plasmids
Product Name:	CC2D1A (NM_017721) Human Tagged ORF Clone
Tag:	Myc-DDK
Symbol:	CC2D1A
Synonyms:	Aki-1; FREUD-1; Freud-1/Aki1; Lgd2; MRT3; TAPE
Mammalian Cell Selection:	Neomycin
Vector:	pCMV6-Entry (PS100001)
E. coli Selection:	Kanamycin (25 ug/mL)



[View online »](#)

**ORF Nucleotide Sequence:**

>RC209105 ORF sequence  
 Red=Cloning site Blue=ORF Green=Tags(s)

TTTTGTAATACGACTCACTATAGGGCGGCCGGGAATTCGTCGACTGGATCCGGTACCGAGGAGATCTGCC  
 GCC**CGCATCGCC**

ATGCACAAGAGAAAGGACCCCCGGGACCCCCGGGACAGGGCCGCGGGCCGCCAGCTGGGCCTGC  
 TGGTTGACCTCTCCCAGATGGCCTGATGATCCCTGAGGACGGGGCTAACGATGAAGAACTGGAGGCTGA  
 GTTCTTGCTTTGGTCGGGGGCCAGCCCCAGCCCTGGAGAAGCTCAAAGGCAAAGGTCCCTTGCCGATG  
 GAGGCCATTGAGAAGATGGCCAGCCTGTGCATGAGAGACCCGGATGAGGATGAGGAGGAGGGGACGGATG  
 AGGACGACTTGGAGGCTGATGATGACCTGCTGGCGGAGCTAAATGAGGTCCTTGGAGAGGAGCAGAAGGC  
 TTCAGAGACCCACCTCTGTGGCCAGCCGAAGCCTGAGGCCCTCATCCGGGGCTGGAGACCACCTTG  
 CAGGAGAGGCTGGCGCTCTATCAGACAGCAATTGAAAGCGCCAGACAAGCTGGAGACAGCGCCAAGATGC  
 GGCCTACGATCGGGGGTAAAACACTGGAAAACCTGCTCGCCTCCATCCGTAAGGGCAATGCCATTGA  
 CGAAGCGGACATCCCGCCCGCAGTGCCATAGGAAAAGGCCGGGTCCACGCCTACCTACAGCCCTGCA  
 CCCACCCAGCCGGCCCTAGAATCGCGTACGCCCCAGAGCCAGGGTCACCTGGAGGGACCTTCTGCCA  
 CCGCCCCAGCCTCATCTCAGGCTTGGTAAGCCCCAGATGCCCCAGGTCCCTGCAGCCCTGGCCCTCT  
 GGCCAGTTGAGAGCCGCCAGCGGACTACAAGCTGGCTGCCCTCCACGCCAAGCAGCAGGGAGATAACC  
 ACTGCTGCCGCTAGACACTTCCGCGTGGCTAAGAGCTTTGATGCTGTCTTGGAGGGCCTGAGCCGGGGT  
 AGCCCGTGGACCTCTCCTGCCTGCCCTCCACCCGACCAGCTGCCCCAGACCCACCGTACCACCGTC  
 GCAGCCTCCGACCCCGCTACGGCGCCCTCCACAACAGAGGTGCCCCACCCCGAGGACCTGCTGGAG  
 GCGCTGGAGCAGCGGATGGAGCGGTACCAGTGGCCGAGCCAGGCCAAGAGCAAGGGGGACAGCGGA  
 AAGCTCGAATGCACGAGCGCATCTCAAGCAATACCAAGATGCCATCCGAGCCCAAGGCTGGCCGAG  
 CGTGGATGTCGCTGAATTGCCCGTGCCTCCAGGCTTCCCCCAATCCAGGGCTGGAGGCCACCAAGCCC  
 ACCCAGCAGAGTCTGGTGGGTGCTCCTGGAGACTGCCATGAAGCTGGCCAACCAGGATGAAGGCCAGAGG  
 ATGAAGAGGATGAGGTGCCTAAGAAGCAGAACAGCCCTGTGGCCCCACAGCCAGCCAAAGCCCCACC  
 CTCAAGAACTCCCGAGTCGGGATCAGCCCCAACAGCCAAAGCGCCCCCAAGCCACATCCACCAGAGCC  
 CAGCAGCAGTGGCCTTCTAGAGGGCCGAAGAAGCAGCTCCTGCAGGCCGACTGCGAGCCAAGCAGA  
 AAAACGACGTGGAGGGTCCAAAGATGCACCTGCGCCAAGCCAAGGGACTGGAGCCTATGCTGGAGGCCTC  
 GCGCAATGGGCTGCTGTGGACATCACCAAGGTGCCGCTGCCCTGTCAACAAGGACGACTTTGCCCTG  
 GTCAGCGGCCTGGCCCGGTCTGTCTCAGGAGCCGCCGGCGCTATGGTGAACCTACCAAGCTCATAAC  
 GGCAGCAGCAGAGATGTGCCTGAACCACTCAAACCAATTCACCCAGCTGGGCAACATCACTGAAACCA  
 CAAGTTTGAAGATTGGCGGAGGACTGTAAAGCGGAGCATGGACATTCTGAAGCAAGCCTTCGTCGGGGT  
 CTCCCCACGCCACCGCCGCTTTGAGCAAAGGACCTTACAGTCATCAAGATCTTCCCTGACCTCAGCA  
 GCAACGACATGCTCCTTTCATCGTGAAGGGCATCAACTTGCCACACCCCCAGGACTGTCCCCTGGCGA  
 TCTGGATGCTTTGTTTCGGTTTGACTTCCCCTATCCCAACGTGGAAGAAGCTCAGAAAGACAAGACCAGT  
 GTGATCAAGAACACAGACTCCCCTGAGTTCAAGGAGCAGTTCAAACCTGTCATCAACCGCAGCCACCGTG  
 GCTTCCGAAGGGCCATCCAGACCAAGGGCATCAAGTTCGAAGTGGTTACAAGGGGGGCTGTTCAAGAC  
 TGACCGGTGCTGGGGACAGCCAGCTGAAGCTGGATGCACTGGAGATAGCATGTGAGTCCGGGAGATC  
 CTTGAGGTCCTGGATGGTCGCCGCCACAGGGGGCGACTGGAGGTAATGGTCCGGATTCCGGAGCCAC  
 TGACAGCCAGCAGTTGGAGACGACGACAGAGAGGTGGTGGTCAATTGACCCTGTGCCGGCAGCTGTGCC  
 CACACAGGTTGCTGGGCCAAAGGGAAGGCCCTCCTGTGCTGCCCTGCAAGGGAGTCAGGGAACAGA  
 TCAGCCCCGCCCTGCATAGCCTCAGTGTGCTGGCGTTTGACCAAGAGCGTCTGGAGCGGAAGATCCTGG  
 CCCTCAGGCAGGCGGGCGCCGGTGCCTCCAGAGTGGCCAGCAGTACCAGGACATCATGCAACGACG  
 CCAGTGGCAGAGGACAGCTGGAGCAGGGGGTGTGGGCATCCGACGGGAATACGCAGCCAGCTGGAG  
 CGGCAGCTGCAGTTCTACACGGAGGCTGCCGGCGCTGGGCAACGATGGCAGCAGGGATGCTGCAAGG  
 AGCGCTCTATAGCGGAATCTGGTAGAGAGTGAAGTGCAGCGGCTCCGACG

**ACGCGT**ACGCGGCCGCTCGAGCAGAACTCATCTCAGAAGAGGATCTGGCAGCAAATGATATCCTGGATT  
 ACAAGGATGACGACGATAAGGTTTAA

**Protein Sequence:** >RC209105 protein sequence  
 Red=Cloning site Green=Tags(s)

```
MHKRKGPPGPPGRGAAAAARQLGLLVDLSPDGLMIPEDGANDEELEAEFLALVGGQPPALEKLKGGKPLPM
EAIKMASLCLMRDPDEDEEEGTDEDDLEADDDLLAELNEVLGEEQKASETPPPVAQPKPEAPHPGLETTL
QERLALYQTAIESARQAGDSAKMRRYDRGLKTLENLLASIRKGNIDEADIPPPVAIGKGPASTPTYSAPA
PTQPAPRIASAPEPRVTLEGPSATAPASSPGLAKPQMPPGPCSPGPLAQLQSRQRDYKLAALHAKQQGDT
TAAARHFRVAKSFDVLEALSRGEPVDLSCLPPPPDQLPPDPPSPSPQPTPATAPSTTEVPPPPRTLLE
ALEQRMERYQVAAAQAKSKGDQRKARMHERIVKQYQDAIRAHKAGRAVDVAELPVPPGFPIQGLEATKP
TQQSLVGVLETAMKLANQDEGPEDEEDEVKQNSPVAPTAQPKAPSRTPQSGSAPTAKAPPKATSTRA
QQQLAFLEGRKKQLLQAALRAKQKNDVEGAKMHLRQAKGLEPMLEASRNLQVDTIKVPPAPVKNDDFAL
VQRPGPLSQEAARRYGELTKLIRQQHEMCLNHSNQFTQLGNITETTTKFEKLAEDCKRSMDILKQAFVRG
LPTPTARFEQRTFSVIKIFPDLSSNDMLLFIVKGINLPTPPGLSPGDLDFVRFDFPYPNVEEAQDKTS
VIKNTDSPEFKEQFKLCINRSHRGFRRAIQTKGIKFEVHKGGLFKTDRVLGTAQLKLEDAIEACEVREI
LEVLDGRRPTGGRLVEMVRIREPLTAQQLETTTERWLVIDPVAAPVTQVAGPKGAPPVPAPARESGNR
SARPLHLSVLAFDQERLERKILALRQARRPVPPEVAQQYQDIMQRSQWQRAQLEQGGVIRREYAAQLE
RQLQFYTEAARRLGNDGSRDAAKEALYRRNLVESELQRLRR
```

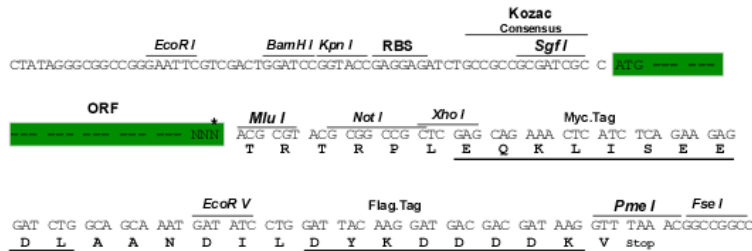
TRTRPLEQKLISEEDLAANDILDYKDDDDKV

**Chromatograms:** [https://cdn.origene.com/chromatograms/mk6071\\_e07.zip](https://cdn.origene.com/chromatograms/mk6071_e07.zip)

**Restriction Sites:** SgfI-MluI

**Cloning Scheme:**

Cloning sites used for ORF Shuttling:



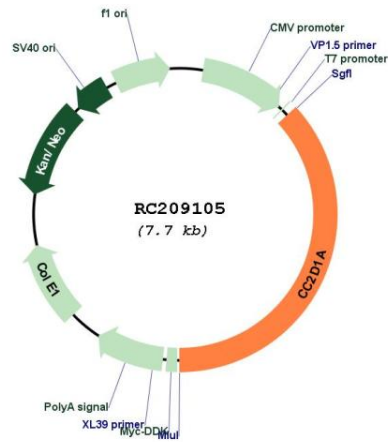
\* The last codon before the Stop codon of the ORF

**ACCN:** NM\_017721

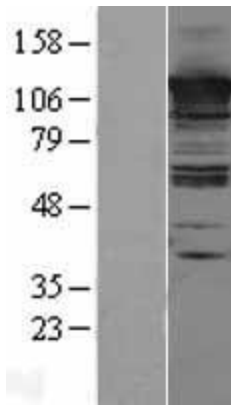
**ORF Size:** 2853 bp

<b>OTI Disclaimer:</b>	The molecular sequence of this clone aligns with the gene accession number as a point of reference only. However, individual transcript sequences of the same gene can differ through naturally occurring variations (e.g. polymorphisms), each with its own valid existence. This clone is substantially in agreement with the reference, but a complete review of all prevailing variants is recommended prior to use. <a href="#">More info</a>
<b>OTI Annotation:</b>	This clone was engineered to express the complete ORF with an expression tag. Expression varies depending on the nature of the gene.
<b>Components:</b>	The ORF clone is ion-exchange column purified and shipped in a 2D barcoded Matrix tube containing 10ug of transfection-ready, dried plasmid DNA (reconstitute with 100 ul of water).
<b>Reconstitution Method:</b>	<ol style="list-style-type: none"> <li>1. Centrifuge at 5,000xg for 5min.</li> <li>2. Carefully open the tube and add 100ul of sterile water to dissolve the DNA.</li> <li>3. Close the tube and incubate for 10 minutes at room temperature.</li> <li>4. Briefly vortex the tube and then do a quick spin (less than 5000xg) to concentrate the liquid at the bottom.</li> <li>5. Store the suspended plasmid at -20°C. The DNA is stable for at least one year from date of shipping when stored at -20°C.</li> </ol>
<b>RefSeq:</b>	<a href="#">NM_017721.5</a>
<b>RefSeq Size:</b>	3644 bp
<b>RefSeq ORF:</b>	2856 bp
<b>Locus ID:</b>	54862
<b>UniProt ID:</b>	<a href="#">Q6P1N0</a>
<b>Cytogenetics:</b>	19p13.12
<b>Domains:</b>	C2, DM14
<b>MW:</b>	104.1 kDa
<b>Gene Summary:</b>	This gene encodes a transcriptional repressor that binds to a conserved 14-bp 5'-repressor element and regulates expression of the 5-hydroxytryptamine (serotonin) receptor 1A gene in neuronal cells. The DNA binding and transcriptional repressor activities of the protein are inhibited by calcium. A mutation in this gene results in a nonsyndromic form of cognitive disability (MRT3). [provided by RefSeq, Jul 2017]

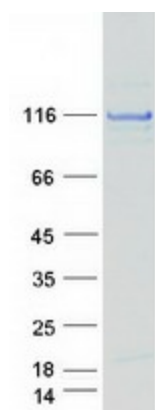
Product images:



Circular map for RC209105



Western blot validation of overexpression lysate (Cat# [LY402610]) using anti-DDK antibody (Cat# [TA50011-100]). Left: Cell lysates from untransfected HEK293T cells; Right: Cell lysates from HEK293T cells transfected with RC209105 using transfection reagent MegaTran 2.0 (Cat# [TT210002]).



Coomassie blue staining of purified CC2D1A protein (Cat# [TP309105]). The protein was produced from HEK293T cells transfected with CC2D1A cDNA clone (Cat# RC209105) using MegaTran 2.0 (Cat# [TT210002]).