

Product datasheet for **RC209104**

GPR97 (ADGRG3) (NM_170776) Human Tagged ORF Clone

Product data:

| | |
|---------------------------|---|
| Product Type: | Expression Plasmids |
| Product Name: | GPR97 (ADGRG3) (NM_170776) Human Tagged ORF Clone |
| Tag: | Myc-DDK |
| Symbol: | GPR97 |
| Synonyms: | GPR97; PB99; PGR26 |
| Mammalian Cell Selection: | Neomycin |
| Vector: | pCMV6-Entry (PS100001) |
| E. coli Selection: | Kanamycin (25 ug/mL) |



[View online »](#)

ORF Nucleotide Sequence:

>RC209104 ORF sequence
 Red=Cloning site Blue=ORF Green=Tags(s)

TTTTGTAATACGACTCACTATAGGGCGGCCGGGAATTCGTCGACTGGATCCGGTACCGAGGAGATCTGCC
 GCC**CGGATCGCC**

ATGGCGACGCCAGGGGCTGGGGCCCTGCTCCTGCTCCTCCTGCTCCCGACCTCAGGTCAGGAAAAGC
 CCACCGAAGGGCCAAGAAACACCTGCCTGGGGAGCAACAACATGTACGACATCTTCAACTGAATGACAA
 GGCTTTGTGCTTACCAAGTGCAGGCAGTCGGGCAGCGACTCCTGCAATGTGAAAACTGCAGAGATAC
 TGGCTAAACTACGAGGCCATCTGATGAAGGAAGTTTACGCAGAAGGTGAACACGCCTTTCTGAAGG
 CTTTGGTCCAGAACCTCAGCACCAACACTGCAGAAGACTTCTATTTCTCTCTGGAGCCCTCAGGTTCC
 GAGGCAGGTGATGAAGGACGAGGACAAGCCCCCTGACAGAGTGCAGCTTCCCAAGAGCCTTTTTCGATCC
 CTGCCAGGCAACAGGTCTGTGGTCCGCTTGGCCGTACCATTCTGGACATTGGTCCAGGGACTCTTTCA
 AGGGCCCCCGGCTCGGCCTGGGAGATGGCAGCGCGGTGTTGAACAATCGCCTGGTGGGTTTGTAGTGTGGG
 ACAAAATGCATGTACCAAGCTGGCTGAGCCTCTGGAGATCGTCTTCTCTACCAGCGACCCCCCTAAC
 ATGACCCTCACCTGTGTATTCTGGGATGTGACTAAAGGGACCACTGGAGACTGGTCTTCTGAGGGCTGCT
 CCACGGAGGTACAGACTGAGGGGACCGTGTGCTGCTGTGACCACCTGACCTTTTTCGCCCTGCTCCTGAG
 ACCCACCTTGACCAGTCCACGGTGCATATCCTCACACGCATCTCCAGGGCGGGCTGTGGGGTCTCCATG
 ATCTTCTGGCCTTACCATTATCTTTATGCCTTTCTGAGGCTTTCCCGGGAGAGGTTCAAGTCAGAAG
 ATGCCCAAAGATCCACGTGGCCCTGGGTGGCAGCCTGTCTCCTGAATCTGGCCTTCTGGTCAATGT
 GGGGAGTGGTCAAAGGGTCTGATGCTGCCTGCTGGGCCCGGGGGCTGTCTTCCACTACTTCTGCTC
 TGTGCCTCACCTGGATGGCCCTGAAGCCTTCCACCTTACCTGCTCGTGTGAGGCTTCAACACCT
 ACTTCGGGCACTACTTCTGAAGCTGAGCCTGGTGGGCTGGGGCCTGCCGCCCTGATGGTCAAGGCAC
 TGGGAGTGCCAACAGCTACGGCCTCTACCCATCCGTGATAGGGAGAACCACCTCTCTGGAGCTATGC
 TGGTTCGTGAAGGGACAACCATGTACGCCCTCTATACCCGTCCACGGCTACTTCTCATCACCTTCC
 TCTTTGGCATGGTGGTCTGGCCCTGGTGGTCTGGAAGATCTTACCCTGTCCCCTGCTACAGTGGTCAA
 GGAGCGGGGAAGAACCAGGAAGAAGGTGCTCACCTGCTGGCCCTCTCGAGCCTGGTGGGTGACATGG
 GGGTTGGCCATCTTACCCCGTTGGCCCTCTCCACCGTCTACATCTTTGCACTTTTCACTCCTTGAAG
 GTGTCTTCTGCTGCTGGTTCACCATCCTTACCTCCCAAGTCAGAGCACCACAGTCTCCTCCTCTAC
 TGCAAGATTGGACCAGGCCCACTCCGCATCTCAAGAA

ACGCGTACGCGGCCGCTCGAGCAGAAACTCATCTCAGAAGAGGATCTGGCAGCAAATGATATCCTGGATT
 ACAAGGATGACGACGATAAGGTTTAA

Protein Sequence:

>RC209104 protein sequence
 Red=Cloning site Green=Tags(s)

MATPRGLGALLLLLLPTSGQEKPTEGPRNTCLGSNNMYDIFNLNDKALCFKCRQSGSDSCNVENLQRY
 WLNYEAHLMKEGLTQKVNTPLKALVQNLSTNTAEDFYFSLEPSQVPRQVMKDEKPPDRVRLPKSLFRS
 LPGNRSVRLAVTILDIGPGLFKGPRGLGDGSGVLNNRLVGLSVGMHVTKLAEPLEIVFSHQRP
 MTLTCVFDVTKGTTGDWSSEGCSTEVRPEGTVCCDHL TFFALLLRPTLDQSTVHILTRISQAGCGVSM
 IFLAFTIILYAFRLSRERFKSEDAPKIHVALGGSLFLLNLAFLVNVGSGSKGSDAACWARGAVFHYFLL
 CAFTWMGLEAFHLYLLAVRVFNTYFGHYFLKLSLVGWGLPALMVIIGTGSANSYGLYTIIRDRENRTSLELC
 WFREGTMYALYITVHGYFLITFLFGMVVLAALVWVKIFTL SRATVVKERKGNRKKVLTLLGLSSLVGVTV
 GLAIFTPLGLSTVYIFALFNSLQGVFICWFITILYLPSSQSTTVSSSTARLDQAHSASQE

TRTRPLEQKLI SEEDLAANDILDYKDDDDKV

Chromatograms:

https://cdn.origene.com/chromatograms/mk6071_d03.zip

Restriction Sites:

Sgfl-Mlul

Cloning Scheme:

ACCN: NM_170776

ORF Size: 1647 bp

OTI Disclaimer: The molecular sequence of this clone aligns with the gene accession number as a point of reference only. However, individual transcript sequences of the same gene can differ through naturally occurring variations (e.g. polymorphisms), each with its own valid existence. This clone is substantially in agreement with the reference, but a complete review of all prevailing variants is recommended prior to use. [More info](#)

OTI Annotation: This clone was engineered to express the complete ORF with an expression tag. Expression varies depending on the nature of the gene.

Components: The ORF clone is ion-exchange column purified and shipped in a 2D barcoded Matrix tube containing 10ug of transfection-ready, dried plasmid DNA (reconstitute with 100 ul of water).

- Reconstitution Method:**
1. Centrifuge at 5,000xg for 5min.
 2. Carefully open the tube and add 100ul of sterile water to dissolve the DNA.
 3. Close the tube and incubate for 10 minutes at room temperature.
 4. Briefly vortex the tube and then do a quick spin (less than 5000xg) to concentrate the liquid at the bottom.
 5. Store the suspended plasmid at -20°C. The DNA is stable for at least one year from date of shipping when stored at -20°C.

RefSeq: [NM_170776.3](#), [NP_740746.3](#)
RefSeq Size: 2676 bp

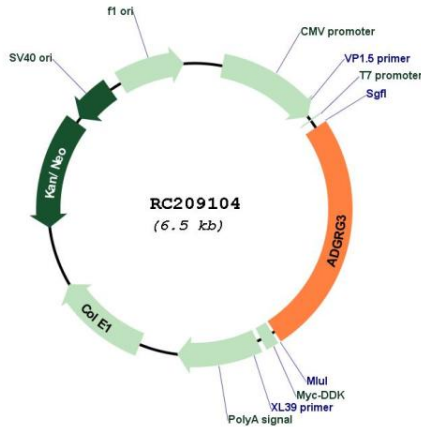
RefSeq ORF: 1650 bp

Locus ID: 222487

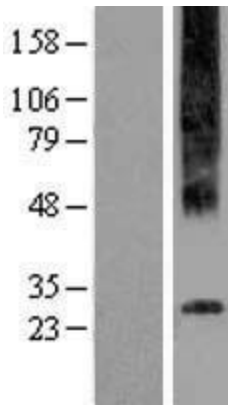
UniProt ID: [Q86Y34](#)

Cytogenetics: 16q21
Protein Families: Druggable Genome, GPCR, Transmembrane
MW: 60.9 kDa
Gene Summary: Orphan receptor that regulates migration of lymphatic endothelial cells in vitro via the small GTPases RhoA and CDC42 (PubMed:24178298). Regulates B-cell development (By similarity). Seems to signal through G-alpha(q)-proteins (PubMed:22575658).[UniProtKB/Swiss-Prot Function]

Product images:



Circular map for RC209104



Western blot validation of overexpression lysate (Cat# [LY406877]) using anti-DDK antibody (Cat# [TA50011-100]). Left: Cell lysates from untransfected HEK293T cells; Right: Cell lysates from HEK293T cells transfected with RC209104 using transfection reagent MegaTran 2.0 (Cat# [TT210002]).