

## Product datasheet for RC209097

### SFXN4 (NM\_213649) Human Tagged ORF Clone

#### Product data:

Product Type:	Expression Plasmids
Product Name:	SFXN4 (NM_213649) Human Tagged ORF Clone
Tag:	Myc-DDK
Symbol:	SFXN4
Synonyms:	BCRM1; COXPD18; SLC56A4
Mammalian Cell Selection:	Neomycin
Vector:	pCMV6-Entry (PS100001)
E. coli Selection:	Kanamycin (25 ug/mL)
ORF Nucleotide Sequence:	>RC209097 ORF sequence Red=Cloning site Blue=ORF Green=Tags(s)

TTTTGTAATACGACTCACTATAGGGCGGCCGGAATTCGTCGACTGGATCCGGTACCGAGGAGATCTGCC  
GCC**CGATCGCC**

ATGTCCTGGAACAGGAGGAGGAAACGCAACCTGGGCGGCTCCTAGGACGCAGAGACGCCGTCCCCGCT  
TCATTGAGCCCAACGTGCGCTTCTGGATCACCGAGCGCCAATCCTTTATTCGACGATTTCTCAATGGAC  
AGAATTATTAGATCCTACAAATGTGTTTCATTTTCAGTTGAAAGTATAGAAAACGAGGCAACTATTGTGC  
ACAAATGAAGATGTTCCAGCCCTGCCTCGGCGGACCAAAGGATACAAGAAGCTTGAAGCGGAGTCTTG  
CAACAGTGCATCCCGACAGCAGCAACCTGATCCCCAAGCTTTTTCGACCTGCAGCGTTCTGCCTTTCAT  
GGCGCCACGGTATTTTTGTCAATGACGCCACTGAAAGGGATCAAGTCCGTGATTTTACCTCAGTTTTTC  
CTCTGTGCCTACATGGCAGCGTTCAACAGCATCAATGGAACAGAAGTTACACTTGTAAAGCCACTAGAAA  
GATCATTACTAATGGCGGGAGCCGTTGCTTCTCAACTTTCTTAGGAGTAATCCCTCAGTTTGTCCAGAT  
GAAGTATGGCCTGACTGGCCCTTGGATTAAGACTCTTACCTGTGATCTTCCCTCGTGCAAGCCAGTGGAA  
ATGAATGTCTACATGTCCGAAGTCTTGAATCCATTAAGGGGATTGCGGTGATGGACAAGGAAGGCAATG  
TCCTGGGTCAATCCAGAATTGCTGGGACAAAGGCTGTTAGAGAAACGCTAGCATCCAGAATAGTGCTGTT  
TGGGACCTCAGCTCTGATTCCTGAAGTCTTACCTACTTTTTTAAAGGACCCAGTATTTTCAGAAAAAC  
CCAGGGTCATTGTGGATTTTGAAGTGTCTGTACTGCTGCTGGCAATGGGACTGATGGTCCATTTTCTT  
TTAGTATATTTCCACAGATTGGACAGATACAGTACTGTAGTCTTGAAGAGAAAATTCAGTCTCCAACAGA  
AGAAACAGAAATCTTTTATCACAGAGGGGTG

**ACGCGT**ACGCGGCCGCTCGAGCAGAAACTCATCTCAGAAGAGGATCTGGCAGCAAATGATATCCTGGATT  
ACAAGGATGACGACGATAAGGTTTAA



[View online »](#)

**Protein Sequence:** >RC209097 protein sequence  
Red=Cloning site Green=Tags(s)

MSLEQEEETQPGRLLGRRDAVPAFIEPNVRFWITERQSFIRRFLQWTELLDPTNVFISVESIENSRQLLC  
 TNEDVSSPASADQRIQEAWKRSLATVHPDSSNLIPKLFRAAFLPFMAPTVFLSMTPLKGIKSVILPQVF  
 LCAYMAAFNSINGNRSYCKPLERSLLMAGAVASSTFLGVIPQFVQMKYGLTGPWIKRLLPVIFLVQASG  
 MNVYMSRSLESIKGIAMDKEGNVLGHSRIAGTKAVRETLASRIVLFGTSALIPEVFTYFFKRTQYFRKN  
 PGSLWILKLSCTVLAMGLMVPFVSIFPQIQYCSLEEKIQSPTEETEIFYHRGV

TRTRPLEQKLISEEDLAANDILDYKDDDDKV

**Chromatograms:** [https://cdn.origene.com/chromatograms/mk6525\\_b07.zip](https://cdn.origene.com/chromatograms/mk6525_b07.zip)

**Restriction Sites:** SgfI-MluI

**Cloning Scheme:**



**ACCN:** NM\_213649

**ORF Size:** 1011 bp

**OTI Disclaimer:** The molecular sequence of this clone aligns with the gene accession number as a point of reference only. However, individual transcript sequences of the same gene can differ through naturally occurring variations (e.g. polymorphisms), each with its own valid existence. This clone is substantially in agreement with the reference, but a complete review of all prevailing variants is recommended prior to use. [More info](#)

**OTI Annotation:** This clone was engineered to express the complete ORF with an expression tag. Expression varies depending on the nature of the gene.

**Components:** The ORF clone is ion-exchange column purified and shipped in a 2D barcoded Matrix tube containing 10ug of transfection-ready, dried plasmid DNA (reconstitute with 100 ul of water).

**Reconstitution Method:**

1. Centrifuge at 5,000xg for 5min.
2. Carefully open the tube and add 100ul of sterile water to dissolve the DNA.
3. Close the tube and incubate for 10 minutes at room temperature.
4. Briefly vortex the tube and then do a quick spin (less than 5000xg) to concentrate the liquid at the bottom.
5. Store the suspended plasmid at -20°C. The DNA is stable for at least one year from date of shipping when stored at -20°C.

**RefSeq:** [NM\\_213649.1](#), [NP\\_998814.1](#)

**RefSeq Size:** 1400 bp

**RefSeq ORF:** 1014 bp

**Locus ID:** 119559

**UniProt ID:** [Q6P4A7](#)

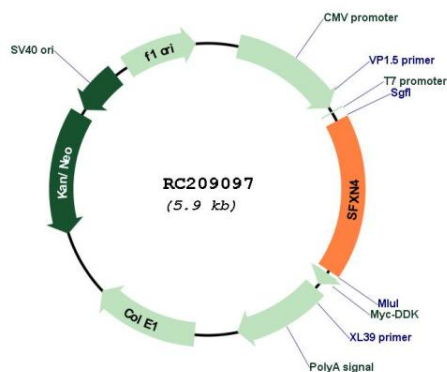
**Cytogenetics:** 10q26.11

**Protein Families:** Transmembrane

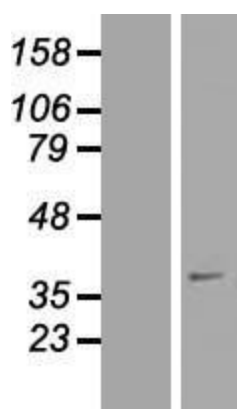
**MW:** 38 kDa

**Gene Summary:** This gene encodes a member of the sideroflexin family. The encoded protein is a transmembrane protein of the inner mitochondrial membrane, and is required for mitochondrial respiratory homeostasis and erythropoiesis. Mutations in this gene are associated with mitochondrial neuropathy and macrocytic anemia. Alternatively spliced transcript variants have been found in this gene. [provided by RefSeq, Jan 2014]

## Product images:



Circular map for RC209097



Western blot validation of overexpression lysate (Cat# [LY403878]) using anti-DDK antibody (Cat# [TA50011-100]). Left: Cell lysates from untransfected HEK293T cells; Right: Cell lysates from HEK293T cells transfected with RC209097 using transfection reagent MegaTran 2.0 (Cat# [TT210002]).