

Product datasheet for RC209092L4

carabin (TBC1D10C) (NM_198517) Human Tagged Lenti ORF Clone

Product data:

Product Type:	Expression Plasmids
Product Name:	carabin (TBC1D10C) (NM_198517) Human Tagged Lenti ORF Clone
Tag:	mGFP
Symbol:	carabin
Synonyms:	CARABIN; EPI64C
Mammalian Cell Selection:	Puromycin
Vector:	pLenti-C-mGFP-P2A-Puro (PS100093)
E. coli Selection:	Chloramphenicol (34 ug/mL)
ORF Nucleotide Sequence:	The ORF insert of this clone is exactly the same as(RC209092).
Restriction Sites:	SgfI-MluI
Cloning Scheme:	

Cloning sites used for ORF Shuttling:



* The last codon before the Stop codon of the ORF.

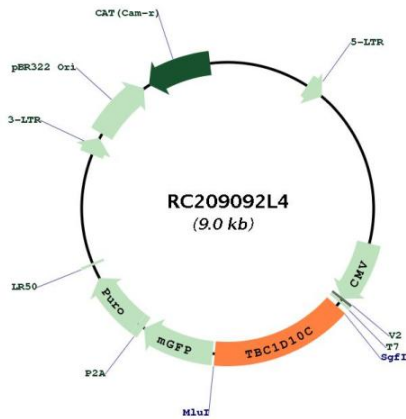
ACCN:	NM_198517
ORF Size:	1338 bp



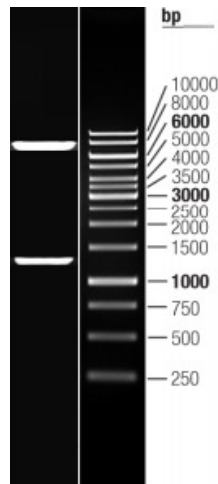
[View online »](#)

OTI Disclaimer:	The molecular sequence of this clone aligns with the gene accession number as a point of reference only. However, individual transcript sequences of the same gene can differ through naturally occurring variations (e.g. polymorphisms), each with its own valid existence. This clone is substantially in agreement with the reference, but a complete review of all prevailing variants is recommended prior to use. More info
OTI Annotation:	This clone was engineered to express the complete ORF with an expression tag. Expression varies depending on the nature of the gene.
Components:	The ORF clone is ion-exchange column purified and shipped in a 2D barcoded Matrix tube containing 10ug of transfection-ready, dried plasmid DNA (reconstitute with 100 ul of water).
Reconstitution Method:	<ol style="list-style-type: none"> 1. Centrifuge at 5,000xg for 5min. 2. Carefully open the tube and add 100ul of sterile water to dissolve the DNA. 3. Close the tube and incubate for 10 minutes at room temperature. 4. Briefly vortex the tube and then do a quick spin (less than 5000xg) to concentrate the liquid at the bottom. 5. Store the suspended plasmid at -20°C. The DNA is stable for at least one year from date of shipping when stored at -20°C.
RefSeq:	NM_198517.2
RefSeq Size:	1752 bp
RefSeq ORF:	1341 bp
Locus ID:	374403
UniProt ID:	Q8IV04
Cytogenetics:	11q13.2
MW:	49.7 kDa
Gene Summary:	The protein encoded by this gene has an N-terminal Rab-GTPase domain and a binding site at the C-terminus for calcineurin, and is an inhibitor of both the Ras signaling pathway and calcineurin, a phosphatase regulated by calcium and calmodulin. Genes encoding similar proteins are located on chromosomes 16 and 22. Multiple transcript variants encoding different isoforms have been found for this gene. [provided by RefSeq, Jan 2013]

Product images:



Circular map for RC209092L4



Double digestion of RC209092L4 using SgfI and MluI