

Product datasheet for **RC209092**

carabin (TBC1D10C) (NM_198517) Human Tagged ORF Clone

Product data:

Product Type:	Expression Plasmids
Product Name:	carabin (TBC1D10C) (NM_198517) Human Tagged ORF Clone
Tag:	Myc-DDK
Symbol:	carabin
Synonyms:	CARABIN; EPI64C
Mammalian Cell Selection:	Neomycin
Vector:	pCMV6-Entry (PS100001)
E. coli Selection:	Kanamycin (25 ug/mL)



[View online »](#)

ORF Nucleotide Sequence:

>RC209092 ORF sequence
 Red=Cloning site Blue=ORF Green=Tags(s)

TTTTGTAATACGACTCACTATAGGGCGGCCGGGAATTCGTCGACTGGATCCGGTACCGAGGAGATCTGCC
 GCC**CGGATCGCC**

ATGGCCCAGGCCCTGGGGGAGGACCTGGTGCAGCCTCCCGAGCTGCAGGATGACTCCAGCTCCTTGGGGT
 CCGACTCAGAGCTCAGCGGGCCTGGCCATATCGCCAGGCCGACCCTATGGATTATTGGGGCAGCTC
 AGCAGAGCCAGGGCCGGGCCACCCACCTGCAGACCTCATCCGCCAACGGGAGATGAAGTGGTGGAGATG
 ACCTCGCACTGGGAGAAAACCATGTCCCGCGGTACAAGAAGGTAAGATGCAGTGCCGAAAGGCATCC
 CGTCTGCCCTGCGCGCCCGATGCTGGCCCTGTTGTGTGGGGCCATGTGTGCCAGAAGAACAGCCCTGG
 CACCTATCAGGAGCTGGCAGAGGCCCTGGAGACCCACAGTGGATGGAGACCATTGGCAGGGACCTGCAC
 CGTCAATCCCTCTGCACGAGATGTTTGTGTGCCTCAGGGCCACGGGCAGCAGGGGCTCCTGCAGGTGC
 TCAAGGCCTACACCTGTATCGACCGGAGCAGGGCTACTGCCAGGCCAGGGGCCGTGGCTGCTGTGCT
 GCTCATGCACCTGCCCCAGAGGAGCCCTCTGGTGCCTGGTGCAGATCTGTGAGTCTACCTCCCTGGG
 TACTACGGGCCCCACATGGAGGCTGTGCGGCTGGACGCCGAGGTTCATGGCCCTGCTGCGGGCGCTGC
 TTCCGCACGTGCAACAAGCACCTGCAGCAGGTGGGCGTCGGACCCCTGCTGTACCTGCCCGAGTGGTTCT
 GTGCCTCTTCCGCCGCTCCCTGCCCTTCCCCACAGTGTGCGTGTCTGGGATGCCTTCTCAGTGAGGGT
 GCCAGAGTACTGTTCCGTGTGGGGCTGACACTGGTGCCTGGCCTGGGCACTGCAGAGCAGCGAGGGG
 CCTGCCCTGGCCCTCTGGAGACTGGGAGCCCTTCGAGCCATCCCCCGCGCAGCTGCAGGAGGAGGC
 CTTTATGTCACAGGTGCACAGCTGGTGTGTGAGCGGGACCTGCAGCGGGAGATCAAGGCCAGCTG
 GCCCAGCTGCCGATTCCGCGCCGGGACCCCGCCCGGCCACAGTCCGCTCGCCGGGGCCCAAGCCA
 TCTTTGAGGCCACAGCTGGCAGGAGTGCAGCAGGCGCAAGCCTGAGGTGCCTCGGATTGTGGTGCA
 GCCCCCGGAGGAGCCAGACCACCGCGGGAACCCAGACCCCGGCAAGACTTCCATGGGCTCCTG
 ACTCGGGCCCGGGCCCCCATCGAGGGGCCCCAGGCCCAACGAGGCTCCACCTCCTTCTGGACA
 CCCGCTTC

ACGCGTACGCGGCCGCTCGAGCAGAACTCATCTCAGAAGAGGATCTGGCAGCAATGATATCCTGGATT
 ACAAGGATGACGACGATAAGGTTTAA

Protein Sequence:

>RC209092 protein sequence
 Red=Cloning site Green=Tags(s)

MAQALGEDLVQPPELQDDSSSLGSDSEL SGPGPYRQADRYGFIGGSSAEPGPGHPPADLIRQREMKWVEM
 TSHWEKMSRRYKVKMQCRKGI PSALRARCWPLL CGAHVCQKNSPGTYQELAEAPGDPQWMETIGRDLH
 RQFPLHEMFVSPQGHGQGLLQVLKAYTLRPEQGYCQAQGPVAAVLLMHLPPPEAFWCLVQICEVYLP
 YYGPHMEAVRLDAEVFMALLRRLPHVHKHLQQVGVGPLYLPEWFCLFARSLPFPTVLRVWDAFLSEG
 ARVLFVRGLTLVRLALGTAEQRGACPLLETLGALRAIPPAQLQEEAFMSQVHVVLSERDLQREIKAQL
 AQLPDSAPGPPRPQVRLAGAQAIFEAQQLAGVRRGAKPEVPRIIVQPPEEPRPPRRKPQTRKTFHGLL
 TRARGPPIEGPPRPQRGSTSFLDTRF

TRTRPLEQKLISEEDLAANDILDYKDDDDKV

Chromatograms:

https://cdn.origene.com/chromatograms/mk6354_a10.zip

Restriction Sites:

Sgfl-Mlul

Cloning Scheme:


ACCN: NM_198517

ORF Size: 1338 bp

OTI Disclaimer: The molecular sequence of this clone aligns with the gene accession number as a point of reference only. However, individual transcript sequences of the same gene can differ through naturally occurring variations (e.g. polymorphisms), each with its own valid existence. This clone is substantially in agreement with the reference, but a complete review of all prevailing variants is recommended prior to use. [More info](#)

OTI Annotation: This clone was engineered to express the complete ORF with an expression tag. Expression varies depending on the nature of the gene.

Components: The ORF clone is ion-exchange column purified and shipped in a 2D barcoded Matrix tube containing 10ug of transfection-ready, dried plasmid DNA (reconstitute with 100 ul of water).

- Reconstitution Method:**
1. Centrifuge at 5,000xg for 5min.
 2. Carefully open the tube and add 100ul of sterile water to dissolve the DNA.
 3. Close the tube and incubate for 10 minutes at room temperature.
 4. Briefly vortex the tube and then do a quick spin (less than 5000xg) to concentrate the liquid at the bottom.
 5. Store the suspended plasmid at -20°C. The DNA is stable for at least one year from date of shipping when stored at -20°C.

RefSeq: [NM_198517.4](#)

RefSeq Size: 1752 bp

RefSeq ORF: 1341 bp

Locus ID: 374403

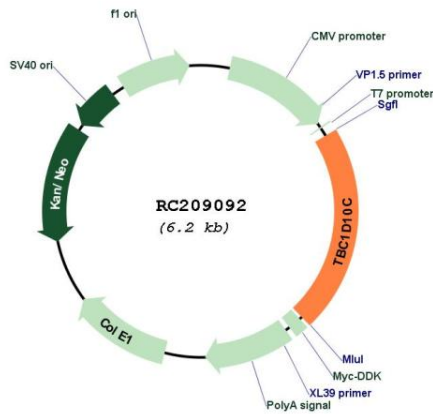
UniProt ID: [Q8IV04](#)

Cytogenetics: 11q13.2

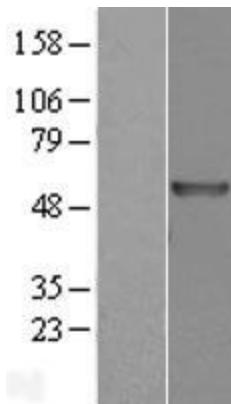
MW: 49.7 kDa

Gene Summary: The protein encoded by this gene has an N-terminal Rab-GTPase domain and a binding site at the C-terminus for calcineurin, and is an inhibitor of both the Ras signaling pathway and calcineurin, a phosphatase regulated by calcium and calmodulin. Genes encoding similar proteins are located on chromosomes 16 and 22. Multiple transcript variants encoding different isoforms have been found for this gene. [provided by RefSeq, Jan 2013]

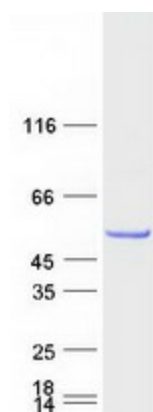
Product images:



Circular map for RC209092



Western blot validation of overexpression lysate (Cat# [LY404903]) using anti-DDK antibody (Cat# [TA50011-100]). Left: Cell lysates from untransfected HEK293T cells; Right: Cell lysates from HEK293T cells transfected with RC209092 using transfection reagent MegaTran 2.0 (Cat# [TT210002]).



Coomassie blue staining of purified TBC1D10C protein (Cat# [TP309092]). The protein was produced from HEK293T cells transfected with TBC1D10C cDNA clone (Cat# RC209092) using MegaTran 2.0 (Cat# [TT210002]).