

## Product datasheet for RC209091

### SLC25A4 (NM\_001151) Human Tagged ORF Clone

#### Product data:

Product Type:	Expression Plasmids
Product Name:	SLC25A4 (NM_001151) Human Tagged ORF Clone
Tag:	Myc-DDK
Symbol:	SLC25A4
Synonyms:	AAC1; ANT; ANT 1; ANT1; MTDPS12; MTDPS12A; PEO2; PEO3; PEOA2; T1
Vector:	pCMV6-Entry (PS100001)
E. coli Selection:	Kanamycin (25 ug/mL)
Cell Selection:	Neomycin
ORF Nucleotide Sequence:	>RC209091 ORF sequence Red=Cloning site Blue=ORF Green=Tags(s)

TTTTGTAATACGACTCACTATAGGGCGGCCGGAATTCGTCGACTGGATCCGGTACCGAGGAGATCTGCC  
GCCGCGATCGCC

ATGGGTGATCACGCTTGGAGCTTCTAAAGGACTTCTGGCCGGGGCGTCGCCGCTGCCGTCTCCAAGA  
CCGCGGTCGCCCCATCGAGAGGGTCAAAGTCTGCTGCAGGTCCAGCATGCCAGCAAACAGATCAGTGC  
TGAGAAGCAGTACAAAGGGATCATTGATTGTGTGGTGAGAATCCCTAAGGAGCAGGGCTTCTCTCCTTC  
TGGAGGGTAACCTGGCCAACGTGATCCGTTACTTCCCCACCAAGCTCTCAACTTCGCCTCAAGGACA  
AGTACAAGCAGCTCTTCTTAGGGGGTGTGGATCGGCATAAGCAGTTCTGGCGCTACTTTGCTGGTAACCT  
GGCGTCCGGTGGGGCCGCTGGGGCCACCTCCCTTTGCTTTGTCTACCCGCTGGACTTTGCTAGGACCAGG  
TTGGCTGCTGATGTGGGCAAGGGCGCCGCCAGCGTGAGTTCCATGGTCTGGGCGACTGTATCATCAAGA  
TCTTCAAGTCTGATGGCCTGAGGGGGCTCTACCAGGGTTTCAACGTCTCTGTCCAAGGCATCATTATCTA  
TAGAGCTGCCTACTTCGGAGTCTATGATACTGCCAAGGGGATGCTGCCTGACCCCAAGAAGCAGTGCACATT  
TTTGTGAGCTGGATGATTGCCAGAGTGTGACGGCAGTCGCAGGGCTGGTGTCTACCCCTTTGACTGTG  
TTCGTCGTAGAATGATGATGCAGTCCGGCCGAAAGGGCCGATATTATGTACACGGGGACAGTTGACTG  
CTGGAGGAAGATTGCAAAAGACGAAGGAGCCAAGGCCTTCTTCAAAGGTGCCTGGTCCAATGTGCTGAGA  
GGCATGGCGGTGCTTTTGTATTGGTGTGTATGATGAGATCAAAAAATATGTC

ACGCGTACGCGGCCGCTCGAGCAGAACTCATCTCAGAAGAGGATCTGGCAGCAAATGATATCCTGGATT  
ACAAGGATGACGACGATAAGGTTTAA



[View online »](#)

**Protein Sequence:** >RC209091 protein sequence  
Red=Cloning site Green=Tags(s)

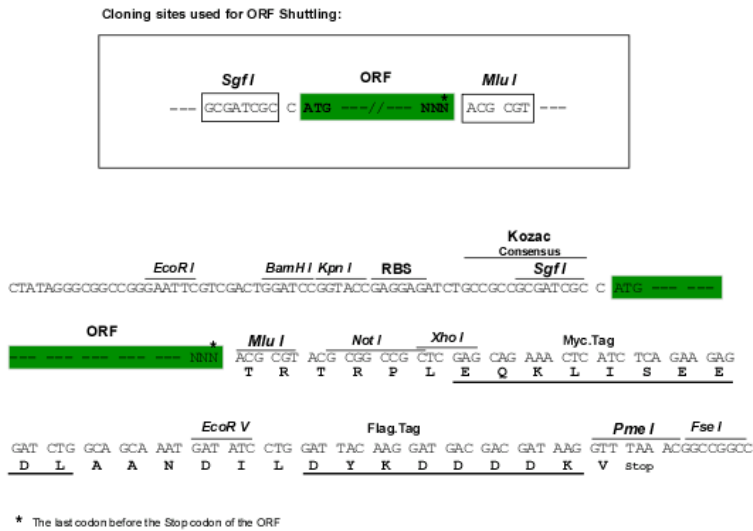
MGDHAWSFLKDFLAGGVAAAVSKTAVAPIERVKLLLQVQHASKQISAEKQYKGIIDCVVRIPKEQGFLSF  
 WRGNLANVIRYFPTQALNFAFKDKYKQLFLGGVDRHKQFWRYFAGNLASGGAAGATSLCFVYPLDFARTR  
 LAADVKGAAQREFHGLGDCIIKIFKSDGLRGLYQGFNVSQGI IIYRAAYFGVYDTAKGMLPDPKNVHI  
 FVSWMIAQSVTAVAGLVSYPFDTVRRRMMMQSGRKGADIMYTGTVDCWRKIAKDEGAKAFFKGAWSNVLR  
 GMGGAFVLVLYDEIKKYV

TRTRPLEQKLISEEDLAANDILDYKDDDDKV

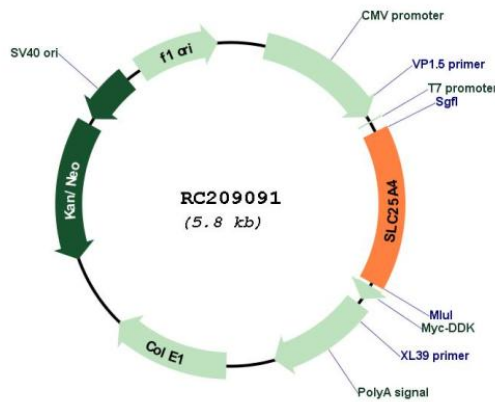
**Chromatograms:** [https://cdn.origene.com/chromatograms/mk6126\\_a01.zip](https://cdn.origene.com/chromatograms/mk6126_a01.zip)

**Restriction Sites:** SgfI-MluI

**Cloning Scheme:**



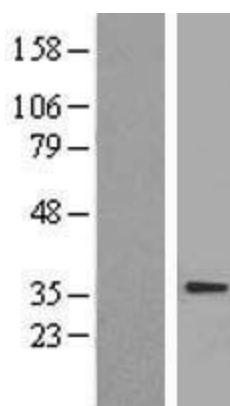
**Plasmid Map:**



**ACCN:** NM\_001151

ORF Size:	894 bp
OTI Disclaimer:	The molecular sequence of this clone aligns with the gene accession number as a point of reference only. However, individual transcript sequences of the same gene can differ through naturally occurring variations (e.g. polymorphisms), each with its own valid existence. This clone is substantially in agreement with the reference, but a complete review of all prevailing variants is recommended prior to use. <a href="#">More info</a>
OTI Annotation:	This clone was engineered to express the complete ORF with an expression tag. Expression varies depending on the nature of the gene.
RefSeq:	<a href="#">NM_001151.4</a>
RefSeq Size:	4420 bp
RefSeq ORF:	897 bp
Locus ID:	291
Domains:	mito_carr
Protein Families:	Druggable Genome, Transmembrane
Protein Pathways:	Calcium signaling pathway, Huntington's disease, Parkinson's disease
MW:	33.1 kDa
Gene Summary:	This gene is a member of the mitochondrial carrier subfamily of solute carrier protein genes. The product of this gene functions as a gated pore that translocates ADP from the cytoplasm into the mitochondrial matrix and ATP from the mitochondrial matrix into the cytoplasm. The protein forms a homodimer embedded in the inner mitochondria membrane. Mutations in this gene have been shown to result in autosomal dominant progressive external ophthalmoplegia and familial hypertrophic cardiomyopathy. [provided by RefSeq, Jun 2013]

### Product images:



Western blot validation of overexpression lysate (Cat# [LY400461]) using anti-DDK antibody (Cat# [TA50011-100]). Left: Cell lysates from untransfected HEK293T cells; Right: Cell lysates from HEK293T cells transfected with RC209091 using transfection reagent MegaTran 2.0 (Cat# [TT210002]).