

Product datasheet for **RC209078**

IER5L (NM_203434) Human Tagged ORF Clone

Product data:

Product Type:	Expression Plasmids
Product Name:	IER5L (NM_203434) Human Tagged ORF Clone
Tag:	Myc-DDK
Symbol:	IER5L
Synonyms:	bA247A12.2
Vector:	pCMV6-Entry (PS100001)
E. coli Selection:	Kanamycin (25 ug/mL)
Cell Selection:	Neomycin



[View online »](#)

ORF Nucleotide Sequence:

>RC209078 ORF sequence, **codon optimized**.
 Due to the complexity of NM_203434, the ORF clone is codon optimized for mammalian Expression.
 The nucleotide sequence differs from the reference sequence, yet the amino acid sequence remains identical.

Red=Cloning site Blue=ORF Green=Tags(s)

TTTTGTAATACGACTCACTATAGGGCGGCCGGGAATTCGTCGACTGGATCCGGTACCGAGGAGATCTGCCGCC**GCGATCGCC**

ATGGAGTGC GCGCTCGACGCC CAGAGCCTTATATCCATTTCCCTGCGCAAGATCCACTCTAGCAGGACCC AACGGGAGGGATCAAGCTCCACAAGAATCTGCTCGTCTCTATGTGCTCCGGAATGCCAGACAAGTGA CCTGAGTGAGAGGTACGCCGAGCTGTATAGGCGCAACAGCAGCAACAACAGCAACAGCCACCCACCAT CAACATCAGCACCTCGCCTATGTGCCCTGGCATGCCAGCTTCCGCCGCGGACTTCGGCCCTTTGCAAC TGGGTGGTGGGGGCGACGCAGAAGCCCGGGAGCCAGCCGCTAGGCACCAACTGCATCAGCTGCACCAATT GCATCAACTTCATTTGCAGCAGCAGCTTACCAGCATCAGCACCCAGCCACGGGGCTGTGCGGGCCGG GCTGCCGCCGGAGCCCCAGCAGGCGGCGCTGGGGCACTGAGCGAAGTTCCTGGATGCGCAGCCCTGCAGC CTCCCCAGGGCGCTCCGCATCGCGGGCAGCCTCTGGAGCCCTGCAGCCCGGCCCTGCCCTCTTCCACT CCCTTTGCCCCCCTGCTCCAGCCGCCTGTGTCCCCGCGACCCAGGGCACCAGCCGCATGCAGCGCG CCACCAGGAGTGCCCCGCCAGCCGCCCGCATACCAGCCGCCAGCCCTGCCAGCCAGTAGCCCTG GATTTTATCGCGGAGCATACCCACCCCAAGTACTTCGGGCTGCATTGTTCTTCCAAACAACAGTGT GGACCTCGATACACATGTAGTCACTACAGTCGAAAACGGCTACCTGCATCAAGACTGCTGCCATCCGCT CACTGCCCTTGCTGTGGCCAGGGTGCCCCGGGCCAGGACTGGCCTCCGCCGAGGGTGTAAACGAAAGT ATTACCCTGGTCAAGAAGAAGAGGAGGATGACGAAGAGGACGCAGGTGGCCTTGAGCCGAACCCCGG GGGGGCCCATTTGCCCTTGCAAACGCGCGGGTTTGAAGACTTCTGTCCTGACTCAAGTCTGACGCC AGCAACATCTCAAACCTCATCTATTTTGGGAGCGGATTCTCAGGACTGGTGTACGACAGCCGGACT CATCTGAACAGCCACCCCGCTCAATGGGCAACTGTGTGCGAAGCAGGCTTTGGCATCCTGGGGCTTG GACCCGAGCCATCGTGGCCTT

AG**GCGACCG**ACGCGTACGCGGCCGCTCGAGCAGAACTCATCTCAGAAGAGGATCTGGCAGCAAATGATATCC TGGATTACAAGGATGACGACGATAAGGTTTAA

Protein Sequence:

>RC209078 representing NM_203434
 Red=Cloning site Green=Tags(s)

MECALDAQSLISISLRKIHSRTQRGGIKLHKNLLVSYVLRNARQLYLSERYAELYRRQQQQQQPPHH QHQHLAYAAPGMPASAADFGPLQLGGGGDAEAREPAARHQLHQLHQLHQLHLQQQLHQHPAPRGCAA AAAGAPAGGAGALSELPGCAALQPPHGAPHRGQPLEPLQPGPAPLPLPLPPPAPAALCPRDRPAPAACSA PPGAAPAAAAASPASPAPASSPGFYRGAYPTPSDFGLHCSSQTTVLDLDTHTVTTVENGYLHQDCCASA HPCCGQGAPGGLASAAGCKRKYYPGQEEEEDEEDAGGLGAEPGGAPFAPCKRARFEDFCPDSSPDA SNISNLSIFSGFSGLVSRQDSSQPPPLNGQLCAKQALASLGAWTRAI VAF

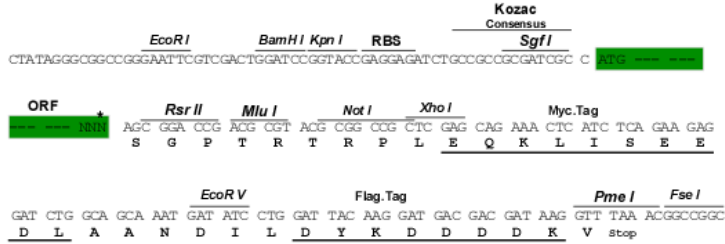
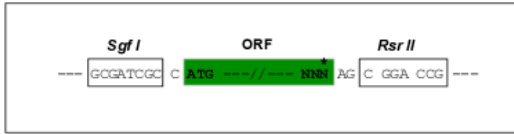
SGP**TRTRPLEQKLI SEEDLAANDILDYKDDDDK**V

Restriction Sites:

SgfI-RsrII

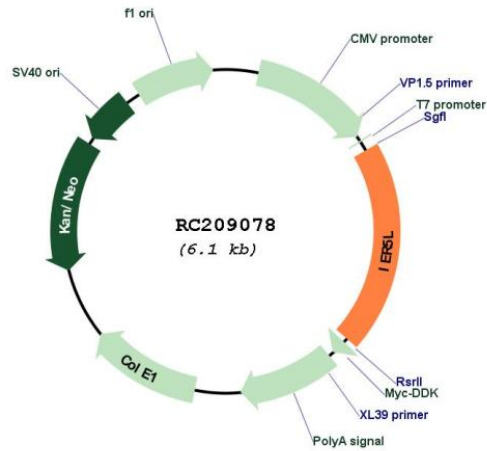
Cloning Scheme:

Cloning sites used for ORF Shuttling:



* The last codon before the Stop codon of the ORF

Plasmid Map:



ACCN: NM_203434

ORF Size: 1212 bp

OTI Disclaimer: The molecular sequence of this clone aligns with the gene accession number as a point of reference only. However, individual transcript sequences of the same gene can differ through naturally occurring variations (e.g. polymorphisms), each with its own valid existence. This clone is substantially in agreement with the reference, but a complete review of all prevailing variants is recommended prior to use. [More info](#)

OTI Annotation: This clone was engineered to express the complete ORF with an expression tag. Expression varies depending on the nature of the gene.

RefSeq: [NM_203434.2](#), [NP_982258.2](#)

RefSeq Size: 2724 bp

RefSeq ORF: 1215 bp
Locus ID: 389792
MW: 42.1 kDa