

Product datasheet for **RC209069**

Pinin (PNN) (NM_002687) Human Tagged ORF Clone

Product data:

Product Type:	Expression Plasmids
Product Name:	Pinin (PNN) (NM_002687) Human Tagged ORF Clone
Tag:	Myc-DDK
Symbol:	Pinin
Synonyms:	DRS; DRSP; memA; SDK3
Mammalian Cell Selection:	Neomycin
Vector:	pCMV6-Entry (PS100001)
E. coli Selection:	Kanamycin (25 ug/mL)



[View online »](#)

ORF Nucleotide
Sequence:

>RC209069 ORF sequence
Red=Cloning site Blue=ORF Green=Tags(s)

TTTTGTAATACGACTCACTATAGGGCGGCCGGGAATTCGTCGACTGGATCCGGTACCGAGGAGATCTGCC
GCCGCGATCGCC

ATGGCGGTGCGCCGTAAGAACCTTTCAGGAACAGCTGAAAAAGCCAAAGAGAGTCTTAAGAACGTGGATG
AGAACATTCGCAAGCTCACCGGGCGGGATCCGAATGACGTGAGGCCCATCCAAGCCAGATTGCTGGCCCT
TCTGGTCTGGTGGAGGTAGAGGACGTGGTAGTTTATTACTGAGGCGTGGATTCTCAGATAGTGGAGGA
GGACCCCAAGCAAAACAGAGAGACCTTGAAGGGCAGTCAGTAGGCTGGGCGGGGAGCGTCGGACCAGAA
GAGAATCACGCCAGGAAAGCGACCCGGAGGATGATGATGTTAAAAAGCCAGCATTGCAGTCTTCAGTTGT
AGTACCTCCAAAGAGCGCACACGTAGAGACCTTATCCAGGATCAAAATATGGATGAAAAGGGAAAGCAA
AGGAACCCGGCAATATTTGGCTTGTGATGGGTACCTTCAAAAATTTAAACAAGAATCCACTGTTGCTA
CTGAAAGGCAAAAAGCGGCCAGGAAATGAACAAAACTTGAAGTTCAGGCAGAAGAAGAGAGAAAAGCA
GGTTGAAAATGAAAGGAGAGAAGTGTGAAAGAGAGGCGTCTAACAGACAGAAGTCCGCGCTTTGGAA
CAGAAAGTTGAGCTTGCCGAGCTGCAAGAAGAATGGAATGAACATAATGCCAAAAAATTAATATATAA
GAACTAAGACAAAAGCCCATTTGTTTTATTCCTGGAAGAATGTGTCCAGCTACCCAAAAACTAATAGA
AGAGTCACAGAGAAAAATGAACGCTTTATTTGAAGGTAGACGCATCGAATTTGCAGAACAAATAAATAA
ATGGAGGCTAGGCCTAGAAGACAATCAATGAAGGAAAAAGAGCATCAGGTGGTGCCTAATGAAGAACAGA
AGGCGGAACAAGAAGAGGGTAAGGTGGCTCAGCGAGAGGAAGAGTTGGAGGAGACAGGTAATCAGCACAA
TGATGTAGAAATAGAGGAAGCAGGAGAGGAAGAGGAAAAGGAAATAGCGATTGTTTATAGTATGCAGAG
AAAGAACAGGAGGAGGAAGAACAACAAACAGGAAATGGAGGTTAAGATGGAGGAGGAACTGAGGTAAGGG
AAAGTGAAGAAGCAGCAGGATAGTCAGCCTGAAGAAGTTATGGATGTGCTAGAGATGGTTGAGAATGTCAA
ACATGTAATTGCTGACCAGGAGTAATGGAACTAATCGAGTTGAAAGTGTAGAACCCTCAGAAAAATGAA
GCTAGCAAGAATTTGAACCCAGAAATGGAATTTGAAATTTGAGCCAGATAAAGAATGTAAATCCCTTTCTC
CTGGGAAAGAGAAATGTCAGTGCTTTAGACATGGAAAAGGAGTCTGAGGAAAAAGAAGAAAAAGAACTGA
GCCCAACCTGAGCCTGTGGCTCAACCTCAGCCTCAGTCTCAGCCCCAGCTTCAGCTTCAATCCCAGTCC
CAACCAGTACTCCAGTCCAGCCTCCCTCTCAGCCTGAGGATTTGTCATTAGCTGTTTTACAGCCAAAC
CCCAAGTTACTCAGGAGCAAGGGCATTACTACCTGAGAGGAAGGATTTCTGTAGAGTCTGTAAAAC
CACTGAGGTACCAGTAGAGCCAGTCTTGACAGTACATCCAGAGAGCAAGAGCAAAAACCAAACTAGGAGC
AGAAGTAGAGGTGAGCTAGAAATAAAACAAGCAAGAGTAGAAGTGAAGCAGTACAGTACAGTCTCTA
GTAGCAGTTCAACCAGTAGCAGCAGTGAAGTAGTCCAGCAGTGAAGTAGTAGCAGTCCAGTACAGTTC
CAGTAGCAGTCCAGTACAAGTGGCAGCAGCAGAGATAGTAGCAGTACACTAGTAGTAGTAGTAGAG
AGTAGAAGTGGAGTAGGGGCGGGGACATAATAGAGATAGAAAGCACAGAAGGAGCGTGGATCGGAAGA
GAAGGGTACTTCAGGACTAGAAAGAAGTCAAAATCTTCAAAGGTGGTAGTAGTAGAGATACAAAAGG
ATCAAAGGATAAGAATCCCGGTCCGACAGAAAGAGGTCTATATCAGAGAGTAGTCGATCAGGCAAAAAGA
TCTTCAAGAAGTGAAGAGACCGAAAATCAGACAGGAAAGACAAAAGGCGT

ACGCGTACGCGGCCGCTCGAGCAGAACTCATCTCAGAAGAGGATCTGGCAGCAATGATATCCTGGATT
ACAAGGATGACGACGATAAGGTTTAA

Protein Sequence: >RC209069 protein sequence
 Red=Cloning site Green=Tags(s)

MAVAVRTLQEQLKAKESLKNVDENIRKLTGRDPNDVRPIQARLLALSGPGGGRGRGSLLLRRGFSDSGG
 GPPAKQRDLEGAVSRLGGERRTRRESRQESDPEDDDVKKPALQSSVVATSKERTRRDLIQDQNMDEKQKQ
 RNRRIFGLLMGTLQKFKQESTVATERQKRRQIEEQKLEVQAEERKQVENERRELFEERRAKQTELRLLE
 QKVELAQLQEWEHNAKIIKYIRTKTKPHLFYIPGRMCPATQKLEESQRKMNALFEGRRIEFAEQINK
 MEARPRRQSMKEKEHQVVRNEEQKAEQEEGKVAQREEELEETGNQHNDVEIEEAGEEEEEKEIAIVHSDAE
 KEQEEEEQKQEMEYKMEETEVRSEKQQDSQPPEVMDVLEMVENVKHVIADQEVMETNRVESVPESENE
 ASKELEPEMEFEIEPDKECKSLSPGKENVSALDMEKESEEKKESEPEPQEPVAQPQPQSQPQLQLQSQS
 QPVLQSQPPSQPEDLSLAVLQPTPQVTQEKGHLLPERKDFPVESVKLTEVPVPEVLTVHPESKSKTKTRS
 RSRGRARNKTSKRSRSS
 SRSRSRGRGHNDRKHRSVDRKRRDTSGLERSHKSSKGGSSRDTKGSKDKNSRSDRKRISSESSRSRSGKR
 SSRSERDRKSDRKDKRR

TRTRPLEQKLISEEDLAANDILDYKDDDDKV

Chromatograms: https://cdn.origene.com/chromatograms/mk6230_e04.zip

Restriction Sites: SgfI-MluI

Cloning Scheme:

Cloning sites used for ORF Shuttling:



* The last codon before the Stop codon of the ORF

ACCN: NM_002687

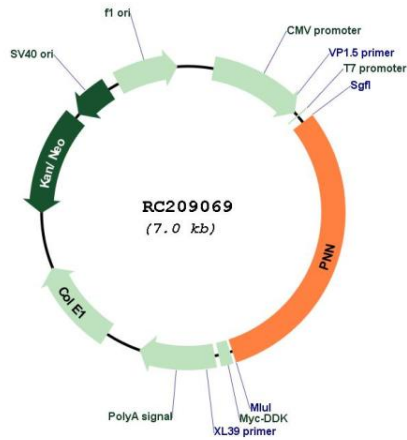
ORF Size: 2151 bp

OTI Disclaimer: The molecular sequence of this clone aligns with the gene accession number as a point of reference only. However, individual transcript sequences of the same gene can differ through naturally occurring variations (e.g. polymorphisms), each with its own valid existence. This clone is substantially in agreement with the reference, but a complete review of all prevailing variants is recommended prior to use. [More info](#)

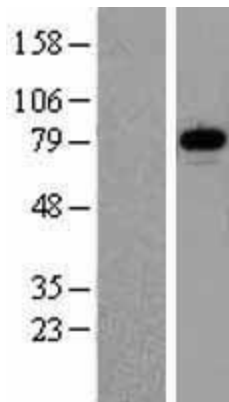
OTI Annotation: This clone was engineered to express the complete ORF with an expression tag. Expression varies depending on the nature of the gene.

Components:	The ORF clone is ion-exchange column purified and shipped in a 2D barcoded Matrix tube containing 10ug of transfection-ready, dried plasmid DNA (reconstitute with 100 ul of water).
Reconstitution Method:	<ol style="list-style-type: none">1. Centrifuge at 5,000xg for 5min.2. Carefully open the tube and add 100ul of sterile water to dissolve the DNA.3. Close the tube and incubate for 10 minutes at room temperature.4. Briefly vortex the tube and then do a quick spin (less than 5000xg) to concentrate the liquid at the bottom.5. Store the suspended plasmid at -20°C. The DNA is stable for at least one year from date of shipping when stored at -20°C.
RefSeq:	<u>NM_002687.4</u>
RefSeq Size:	3606 bp
RefSeq ORF:	2154 bp
Locus ID:	5411
UniProt ID:	<u>Q9H307</u>
Cytogenetics:	14q21.1
Domains:	pinin_SDK_memA, pinin_SDK_N
Protein Families:	Stem cell - Pluripotency, Transcription Factors
MW:	81.6 kDa
Gene Summary:	Transcriptional activator binding to the E-box 1 core sequence of the E-cadherin promoter gene; the core-binding sequence is 5'CAGGTG-3'. Capable of reversing CTBP1-mediated transcription repression. Auxiliary component of the splicing-dependent multiprotein exon junction complex (EJC) deposited at splice junction on mRNAs. The EJC is a dynamic structure consisting of core proteins and several peripheral nuclear and cytoplasmic associated factors that join the complex only transiently either during EJC assembly or during subsequent mRNA metabolism. Participates in the regulation of alternative pre-mRNA splicing. Associates to spliced mRNA within 60 nt upstream of the 5'-splice sites. Component of the PSAP complex which binds RNA in a sequence-independent manner and is proposed to be recruited to the EJC prior to or during the splicing process and to regulate specific excision of introns in specific transcription subsets. Involved in the establishment and maintenance of epithelia cell-cell adhesion. Potential tumor suppressor for renal cell carcinoma.[UniProtKB/Swiss-Prot Function]

Product images:



Circular map for RC209069



Western blot validation of overexpression lysate (Cat# [LY419166]) using anti-DDK antibody (Cat# [TA50011-100]). Left: Cell lysates from untransfected HEK293T cells; Right: Cell lysates from HEK293T cells transfected with RC209069 using transfection reagent MegaTran 2.0 (Cat# [TT210002]).