

## Product datasheet for **RC209061**

### **c-Myb (MYB) (NM\_005375) Human Tagged ORF Clone**

#### **Product data:**

Product Type:	Expression Plasmids
Product Name:	c-Myb (MYB) (NM_005375) Human Tagged ORF Clone
Tag:	Myc-DDK
Symbol:	c-Myb
Synonyms:	c-myb; c-myb_CDS; Cmyb; efg
Mammalian Cell Selection:	Neomycin
Vector:	pCMV6-Entry (PS100001)
E. coli Selection:	Kanamycin (25 ug/mL)



[View online »](#)

ORF Nucleotide  
Sequence:

>RC209061 representing NM\_005375  
 Red=Cloning site Blue=ORF Green=Tags(s)

TTTTGTAATACGACTCACTATAGGGCGGCCGGAATTCGTCGACTGGATCCGGTACCGAGGAGATCTGCC  
 GCC**CGGATCGCC**

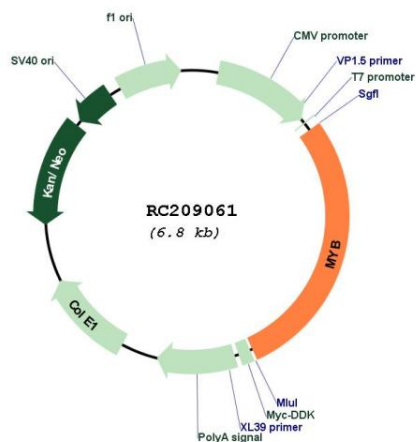
ATGGCCCCGAAGACCCCGGCACAGCATATATAGCAGTGACGAGGATGATGAGGACTTTGAGATGTGTGACC  
 ATGACTATGATGGGCTGCTTCCCAAGTCTGGAAAGCGTCACTTGGGGAAAACAAGGTGGACCCGGGAAGA  
 GGATGAAAAAAGTGAAGAAGCTGGTGAACAGAATGGAACAGATGACTGGAAGATTATTGCCAATTATCTC  
 CCGAATCGAACAGATGTGCAGTGCCAGCACCGATGGCAGAAAAGTAAACCCTGAGCTCATCAAGGGTC  
 CTTGGACCAAAGAAGAAGATCAGAGAGTGATAGAGCTTGTACAGAAAACGGTCCGAAACGTTGGTCTGT  
 TATTGCCAAGCACTTAAAGGGGAGAATTGGAAAACAATGTAGGGAGAGGTGGCATAACCCTTGAATCCA  
 GAAGTTAAGAAAACCTCCTGGACAGAAGAGGAAGACAGAATTATTTACCAGGCACACAAGAGACTGGGGA  
 ACAGATGGGCAGAAATCGCAAAGCTACTGCCTGGACGAACTGATAATGCTATCAAGAACCCTGGAATTC  
 TACAATGCGTCGGAAGGTGGAACAGGAAGTTATCTGCAGGAGTCTTCAAAGCCAGCCAGCCAGCAGTG  
 GCCACAAGCTTCCAGAAGAACAGTCATTTGATGGGTTTTGCTCAGGCTCCGCCTACAGCTCAACTCCCTG  
 CCACTGGCCAGCCCACTGTTAACACGACTATTCTATTACCACATTTCTGAAGCACAAAATGTCTCCAG  
 TCATGTTCCATACCTGTAGCGTTACATGTAATATAGTCAATGTCCCTCAGCCAGCTGCCCGAGCCATT  
 CAGAGACACTATAATGATGAAGACCCTGAGAAGGAAAAGCGAATAAAGGAATTAGAATTGCTCCTAATGT  
 CAACCGAGAATGAGCTAAAAGGACAGCAGGTGCTACCAACACAGAACCACACATGCAGCTACCCCGGGT  
 GCACAGCACCACCATTGCCGACCACCCAGACCTCATGGAGACAGTGCACCTGTTTCTGTTGGGAGAA  
 CACCCTCCACTCCATCTCTGCCAGCGGATCCTGGCTCCCTACCTGAAGAAAAGCGCCTCGCCAGCAAGGT  
 GCATGATCGTCCACCAGGCACCATTCTGGATAATGTTAAGAACCTCTTAGAATTTGCAGAAACACTCCA  
 ATTTATAGATTCTTTCTTAAACACTTCCAGTAACCATGAAAACCTCAGACTTGGAATGCCTTCTTTAACT  
 TCCACCCCTCATTGGTCACAAATTGACTGTTACAACACCATTTATAGAGACCAGACTGTGAAAACCTC  
 AAAAGGAAAATACTGTTTTTAGAACCCAGCTATCAAAGGTCAATCTTAGAAAAGCTCTCCAAGAACTCC  
 TACACCATTCAAACATGCACTTGCAGCTCAAGAAATTAATACGGTCCCCTGAAGATGCTACCTCAGACA  
 CCCTCTCATCTAGTAGAAGATCTGCAGGATGTGATCAAACAGGAATCTGATGAATCTGGAATTTGTTGCTG  
 AGTTTCAAGAAAATGGACCACCCTTACTGAAGAAAATCAAACAAGAGGTGGAATCTCCAAGTATAAATC  
 AGGAAACTTCTTCTGCTCACACCCTGGGAAGGGGACAGTCTGAATACCCAAGTGTTCACGCAGACCTCG  
 CCTGTGGCAGATGCACCGAATATTCTTACAAGCTCCGTTTTAATGGCACCAGCATCAGAAGATGAAGACA  
 ATGTTCTCAAAGCATTTACAGTACCTAAAAACAGGTCCCTGGCGAGCCCTTGCAGCCTTGTAGCAGTAC  
 CTGGGAACCTGCATCCTGTGAAAGATGGAGGAGCAGATGACATCTTCCAGTCAAGCTCGTAAATACGTG  
 AATGCATTCTCAGCCCGGACGCTGGTCATG

**ACGCGT**ACGCGGCCGCTCGAGCAGAAACTCATCTCAGAAGAGGATCTGGCAGCAAATGATATCCTGGATT  
 ACAAGGATGACGACGATAAGGTTTAA

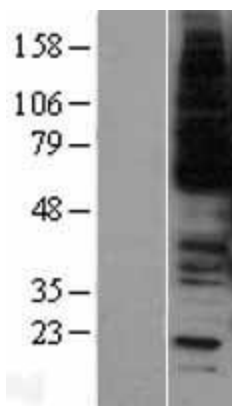


<b>OTI Disclaimer:</b>	Due to the inherent nature of this plasmid, standard methods to replicate additional amounts of DNA in E. coli are highly likely to result in mutations and/or rearrangements. Therefore, OriGene does not guarantee the capability to replicate this plasmid DNA. Additional amounts of DNA can be purchased from OriGene with batch-specific, full-sequence verification at a reduced cost. Please contact our customer care team at <a href="mailto:custsupport@origene.com">custsupport@origene.com</a> or by calling 301.340.3188 option 3 for pricing and delivery.
	The molecular sequence of this clone aligns with the gene accession number as a point of reference only. However, individual transcript sequences of the same gene can differ through naturally occurring variations (e.g. polymorphisms), each with its own valid existence. This clone is substantially in agreement with the reference, but a complete review of all prevailing variants is recommended prior to use. <a href="#">More info</a>
<b>OTI Annotation:</b>	This clone was engineered to express the complete ORF with an expression tag. Expression varies depending on the nature of the gene.
<b>Components:</b>	The ORF clone is ion-exchange column purified and shipped in a 2D barcoded Matrix tube containing 10ug of transfection-ready, dried plasmid DNA (reconstitute with 100 ul of water).
<b>Reconstitution Method:</b>	<ol style="list-style-type: none"> <li>1. Centrifuge at 5,000xg for 5min.</li> <li>2. Carefully open the tube and add 100ul of sterile water to dissolve the DNA.</li> <li>3. Close the tube and incubate for 10 minutes at room temperature.</li> <li>4. Briefly vortex the tube and then do a quick spin (less than 5000xg) to concentrate the liquid at the bottom.</li> <li>5. Store the suspended plasmid at -20°C. The DNA is stable for at least one year from date of shipping when stored at -20°C.</li> </ol>
<b>RefSeq:</b>	<a href="#">NM_005375.4</a>
<b>RefSeq Size:</b>	3342 bp
<b>RefSeq ORF:</b>	1923 bp
<b>Locus ID:</b>	4602
<b>UniProt ID:</b>	<a href="#">P10242</a>
<b>Cytogenetics:</b>	6q23.3
<b>Domains:</b>	myb_DNA-binding
<b>Protein Families:</b>	Druggable Genome, ES Cell Differentiation/IPS, Stem cell - Pluripotency, Transcription Factors
<b>MW:</b>	72.2 kDa
<b>Gene Summary:</b>	This gene encodes a protein with three HTH DNA-binding domains that functions as a transcription regulator. This protein plays an essential role in the regulation of hematopoiesis. This gene may be aberrantly expressed or rearranged or undergo translocation in leukemias and lymphomas, and is considered to be an oncogene. Alternative splicing results in multiple transcript variants. [provided by RefSeq, Jan 2016]

Product images:



Circular map for RC209061



Western blot validation of overexpression lysate (Cat# [LY401654]) using anti-DDK antibody (Cat# [TA50011-100]). Left: Cell lysates from untransfected HEK293T cells; Right: Cell lysates from HEK293T cells transfected with RC209061 using transfection reagent MegaTran 2.0 (Cat# [TT210002]).