

## Product datasheet for **RC209060**

### SCML2 (NM\_006089) Human Tagged ORF Clone

#### Product data:

Product Type:	Expression Plasmids
Product Name:	SCML2 (NM_006089) Human Tagged ORF Clone
Tag:	Myc-DDK
Symbol:	SCML2
Mammalian Cell Selection:	Neomycin
Vector:	pCMV6-Entry (PS100001)
E. coli Selection:	Kanamycin (25 ug/mL)



[View online »](#)

ORF Nucleotide  
Sequence:

>RC209060 ORF sequence  
Red=Cloning site Blue=ORF Green=Tags(s)

TTTTGTAATACGACTCACTATAGGGCGGCCGGAATTCGTGCGACTGGATCCGGTACCGAGGAGATCTGCC  
GCCGCGATCGCC

ATGGGACAAACAGTGAATGAAGATTCCATGGATGTCAAGAAGGAGAATCAAGAGAAAACCTCCTCAGTCAA  
GTACATCTTCTGTACAAAGGGATGATTTCCACTGGGAGGAGTATTTGAAAGAGACTGGGTCTATAAGTGC  
TCCTTCAGAGTGCCTCCGTCAGTCTCAGATTCCACCTGTGAATGATTTCAAAGTTGGTATGAAATTGGAA  
GCCCGTGACCCTCGCAATGCCACTTCAGTATGTATTGCTACGGTATTGGAATTACTGGGGCCAGGTTAC  
GGTTACGACTGGATGGTAGTGACAACAGAAATGATTTTTGGAGGCTTGTGCGATCCCCAGATATAACAAC  
TGTTGGGACATGTAAAAGGAAGGAGACTTACTCAACCTCCACTAGGGTACCAGATGAATACATCTCC  
TGGCCGATGTTCCCTTAAAGACACTAAATGGGTCTGAAATGGCATCTGCCACATATTTAAGAAGGAAC  
CACCAAAGCCCCACTAAATAATTTAAAGTGGGGATGAAACTGGAAGCTATTGACAAAAAGAACCCGTA  
TCTCATCTGTCTGCGACCATTGGAGATGTTAAAGGGGATGAAGTTCATATCACATTTGATGGCTGGAGT  
GGAGCTTTTGATTACTGGTGCAAGTATGATTCTCGAGATATTTCCAGCTGGGTGGTGTGCGCTGACAG  
GAGATGTATTACAACCCCGAGGAAGTAGTTCCTATTGTAAGAATATAGCAAAAAACAGAGTCTTCTCC  
TTCCGAAGCAAGCCAGCATTCAATGCAGTCTCCACAGAAAACCTACTCTAATATTACCAACACAGCAGGTC  
AGGAGATCAAGTCGAATTAACCCACTGGACCTACTGCAGTCCCCAAAAGGAGCAGTTCTGTTAAAAATA  
TCACACCAAGGAAAAAAGGTCCAACTCAGGAAAAAAGGAAAAACCTTTGCCCGTGATATGTTCTACATC  
TGCAGCTTCTCTAAAATCGCTGACCAGAGACCGTGGCATGTTATATAAGATGTCGCTTCTGGGCCATGT  
AAAATAGTGATGTCTACAGTCTGTGTCTATGTAACAAACATGGAACCTTTGGCCCTCATCTGGATCCCA  
AGAGAATCCAGCAGCTGCCTGACCATTCCGCCCCGGGCCGGTGAATGTGGTGCTTCGCCGATTGTGCA  
GGCCTGTGTGGATTGTGCCCTTGAACTAAAACCTGTTTTGGATACCTGAAGCCAGATAATCGTGGAGGA  
GAAGTGATAACTGCCTCCTTTGATGGGAACTCATTCCATCCAGCTCCCTCCAGTGAACAGTGCATCAT  
TTGCTCTTCGCTTCTTGAGAACTTCTGCCACAGTCTGCAGTGTGATAACCTTTTGAGTAGCCAGCCTTT  
TAGTTCTTCCAGGGTCACTACTCACAGTCTGCAGAGCATGATAAAAAATCAGTCAGCAAAAAGAAGATGTA  
ACAGAAAGGCAAAGCACCAACGATCTCCTCAGCAAACTGTACCATATGTTGTTCTCTCTCTCCTAAGC  
TCCCCAAAACAAGGAGTATGCGTCTGAAGGAGAACCATTGTTTGGTGGGGGAAGTCCATTCCCAAAGA  
GGAGAATCTTTCAGAAGATTCTAAGAGCTCATCACTAAATTCAGGAAATATTTGATCCTGCCTGTAGA  
AATCCTATGTATATTCATACTTCACTCTCCAGGATTTTCTCGAAGTGTGCCAGGCACCACAAGTTCAC  
CACTAGTTGGGGACATATCCCCAAGAGCAGTCCCATGAAGTTAAATCCAAATGCAGAGGAAAAGTGA  
AGCTCCAAGTTATATAGCTGTACCTGATCCAGTGTCCGAAACAAGGCTTCTCTAAGGACCTTCAACC  
TGGTCTGTGGATGAAGTGATACAGTTTATGAAACATACAGATCCTCAGATATCAGGCCCCCTCGCCGACC  
TCTTCAGGCAACATGAAATTGATGGGAAGGCTCTGTTCTACTCAAGAGTGATGTGATGATGAAGTATAT  
GGGGCTGAAGCTGGGGCCAGCATTAAAGCTGTGTTACTACATTGAAAAGCTTAAAGAAGGAAAATACAGT

ACGCGTACGCGGCCGCTCGAGCAGAACTCATCTCAGAAGAGGATCTGGCAGCAATGATATCCTGGATT  
ACAAGGATGACGACGATAAGGTTTAA

Protein Sequence: >RC209060 protein sequence  
 Red=Cloning site Green=Tags(s)

MGQTVNEDSMDVKKENQEKT PQSSTSSVQRDDFHWEELKETGSISAPSECFRQSQIPVNDKFKVGMKLE  
 ARDPRNATSVCIATVIGITGARLRLRLDGSNDRNDFWRLVSDPIQPVGTC EKEGDLLQPPLGYQMNTSS  
 WPMFLLKTLNGSEMASATLFKKEPPKPLNFKVGMKLEAIDKKNPYLICPATIGDVKGDEVHITFDGWS  
 GAFDYWCKYDSRDIFPAGWCRLTGDVLQPPGTSVPIVKNIAKTESPSEASQHSMSQPQKTTLLIPTQQV  
 RRSSRIKPPGPTAVPKRSSVKNITPRKKGPNKSGKKEKPLPVICSTSAASLKS LTRDRGMLYKDVASGPC  
 KIVMSTVCVYVKNKHGNGPHLDPKRIQQLPDHFPGPVNVVLRRIVQACVDCALET KT VFGYLKPDNRGG  
 EVITASFDGETHSIQ LPPVNSASFALRFL ENFCHSLQCDNLLSSQPFSSSRGHTHSSAEHDKNQSAKEDV  
 TERQSTKRSPQQTVPYVPLSPKLPKTKEYASEGEPLFAGGSAIPKEENLSEDSKSSSLNSGNLNPACR  
 NPMYIHTSVSQDFSRVPGTTSSPLVGDISP KSSPHEVKFQMQRKSEAPSYIAVPDPSVLKQGF SKDPST  
 WSVDEVIQFMKHTDPQISGPLADLFRQHEIDGKALFLLKSDVMMKYMGLKLGPA LKLCYIEKLKEGKYS

TRTRPLEQKLISEEDLAANDILDYKDDDDKV

Chromatograms: [https://cdn.origene.com/chromatograms/mk6355\\_f09.zip](https://cdn.origene.com/chromatograms/mk6355_f09.zip)

Restriction Sites: SgfI-MluI

Cloning Scheme:



ACCN: NM\_006089

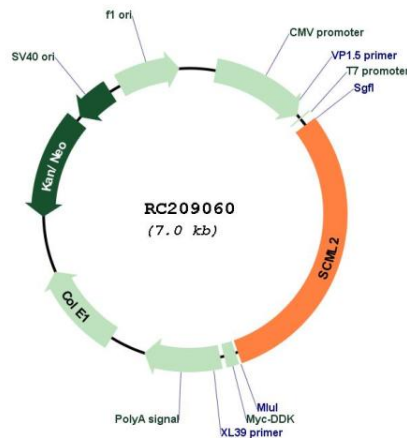
ORF Size: 2100 bp

OTI Disclaimer: The molecular sequence of this clone aligns with the gene accession number as a point of reference only. However, individual transcript sequences of the same gene can differ through naturally occurring variations (e.g. polymorphisms), each with its own valid existence. This clone is substantially in agreement with the reference, but a complete review of all prevailing variants is recommended prior to use. [More info](#)

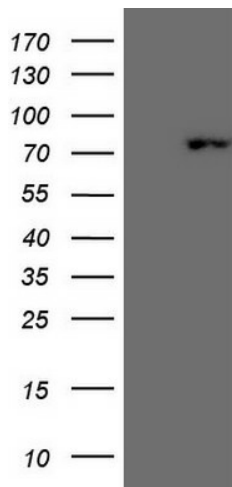
OTI Annotation: This clone was engineered to express the complete ORF with an expression tag. Expression varies depending on the nature of the gene.

<b>Components:</b>	The ORF clone is ion-exchange column purified and shipped in a 2D barcoded Matrix tube containing 10ug of transfection-ready, dried plasmid DNA (reconstitute with 100 ul of water).
<b>Reconstitution Method:</b>	<ol style="list-style-type: none"> <li>1. Centrifuge at 5,000xg for 5min.</li> <li>2. Carefully open the tube and add 100ul of sterile water to dissolve the DNA.</li> <li>3. Close the tube and incubate for 10 minutes at room temperature.</li> <li>4. Briefly vortex the tube and then do a quick spin (less than 5000xg) to concentrate the liquid at the bottom.</li> <li>5. Store the suspended plasmid at -20°C. The DNA is stable for at least one year from date of shipping when stored at -20°C.</li> </ol>
<b>RefSeq:</b>	<u><a href="#">NM_006089.3</a></u>
<b>RefSeq Size:</b>	4212 bp
<b>RefSeq ORF:</b>	2103 bp
<b>Locus ID:</b>	10389
<b>UniProt ID:</b>	<u><a href="#">Q9UQR0</a></u>
<b>Cytogenetics:</b>	Xp22.13
<b>Domains:</b>	SAM, MBT
<b>Protein Families:</b>	Transcription Factors
<b>MW:</b>	77.3 kDa
<b>Gene Summary:</b>	This gene encodes a member of the Polycomb group proteins. These proteins form the Polycomb repressive complexes which are involved in transcriptional repression. The encoded protein binds histone peptides that are monomethylated at lysine residues and may be involved in regulating homeotic gene expression during development. [provided by RefSeq, Jun 2010]

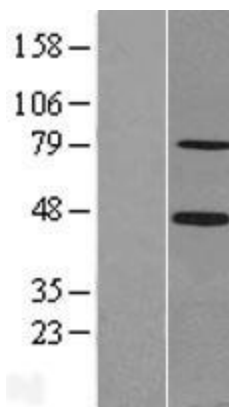
**Product images:**



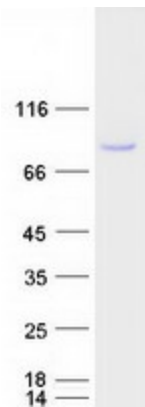
Circular map for RC209060



HEK293T cells were transfected with the pCMV6-ENTRY control (Cat# [PS100001], Left lane) or pCMV6-ENTRY SCML2 (Cat# RC209060, Right lane) cDNA for 48 hrs and lysed. Equivalent amounts of cell lysates (5 ug per lane) were separated by SDS-PAGE and immunoblotted with anti-SCML2 (Cat# [TA807779])(1:2000). Positive lysates [LY416870] (100ug) and [LC416870] (20ug) can be purchased separately from OriGene.



Western blot validation of overexpression lysate (Cat# [LY416870]) using anti-DDK antibody (Cat# [TA50011-100]). Left: Cell lysates from untransfected HEK293T cells; Right: Cell lysates from HEK293T cells transfected with RC209060 using transfection reagent MegaTran 2.0 (Cat# [TT210002]).



Coomassie blue staining of purified SCML2 protein (Cat# [TP309060]). The protein was produced from HEK293T cells transfected with SCML2 cDNA clone (Cat# RC209060) using MegaTran 2.0 (Cat# [TT210002]).