

## Product datasheet for **RC209059**

### **KAT5 (NM\_006388) Human Tagged ORF Clone**

#### **Product data:**

Product Type:	Expression Plasmids
Product Name:	KAT5 (NM_006388) Human Tagged ORF Clone
Tag:	Myc-DDK
Symbol:	KAT5
Synonyms:	cPLA2; ESA1; HTATIP; HTATIP1; NEDFASB; PLIP; TIP; TIP60; ZC2HC5
Mammalian Cell Selection:	Neomycin
Vector:	pCMV6-Entry (PS100001)
E. coli Selection:	Kanamycin (25 ug/mL)



[View online »](#)

**ORF Nucleotide Sequence:**

>RC209059 ORF sequence  
 Red=Cloning site Blue=ORF Green=Tags(s)

TTTTGTAATACGACTCACTATAGGGCGGCCGGAATTCGTCGACTGGATCCGGTACCGAGGAGATCTGCC  
 GCC**CGCATCGCC**

ATGGCGGAGTGGGGAGATAATCGAGGGCTGCCGCTACCCGTGCTGCGCGGAACAGGACAACGAAG  
 ATGAGTGGCCCTGGCCGAGATCCTGAGCGTGAAGGACATCAGTGGCCGGAAGCTTTTCTACGTCCATTA  
 CATTGACTTCAACAAACGTCTGGATGAATGGGTGACGCATGAGCGGCTGGACCTAAAGAAGATCCAGTTC  
 CCCAAGAAAGAGGCCAAGACCCCACTAAGAACGGACTTCTGGGTCCCCTCTGGCTCTCCAGAGAGAG  
 AGGTGCCGGCCTCGGCGCAGGCCAGCGGAAGACCTTGCCAAATCCCGGTCCAGATCACACTCCGCTTCAA  
 CCTGCCAAGGAGCGGGAGGCCATTCCCGGTGGCAGCCTGACCAGCCGCTCTCTCCAGCTCTGCCTG  
 CAGCCCAACCACCGCTCAACGAAACGGAAGGTGGAGGTGGTTTACCAGCACTCCAGTCCCGAGCGAGA  
 CAGCCCCGGCCTCGGTTTTTCCCAGAATGGAGCCCGCTAGGGCAGTGGCAGCCAGCCAGGACGGAA  
 GCGAAAATCGAATTGTTGGGCACTGATGAGGACTCCAGGACAGCTCTGATGGAATACCGTCAGCACCA  
 CGCATGACTGGCAGCCTGGTGTCTGATCGAAGCCACGACGACATCGTACCCGGATGAAGAACATTGAGT  
 GCATTGAGCTGGGCCGGCACCGCTCAAGCCGTGGTACTTCTCCCGTACCCACAGGAACCTACCACATT  
 GCCTGTCTCTACCTGTGCGAGTTCTGCCTCAAGTACGGCCGTAGTCTCAAGTGTCTTACAGGTCATTTG  
 ACCAAGTGTGACCTACGACATCTCCAGGCAATGAGATTTACCGCAAGGGCACCATCTCCTTCTTTGAGA  
 TTGATGGACGTAAGAACAAGAGTTATCCCAGAACCTGTGTCTTTGGCCAAGTGTTCCTTGACCATAA  
 GACTGTACTATGACACAGACCCTTCTCTTCTACGTCATGACAGAGTATGACTGTAAGGGCTTCCAC  
 ATCGTGGGCTACTTCTCAAGGAGAAAGAATCAACGGAAGACTACAATGTGGCCTGCATCTCAACCTGC  
 CTCCCTACCAGCGCCGGGGCTACGGCAAGCTGCTGATCGAGTTCAGCTATGAACTCTCAAAGTGGAAGG  
 GAAAACAGGGACCCTGAGAAGCCCTCTCAGACCTTGGCCTCCTATCCTATCGAAGCTACTGGTCCCAG  
 ACCATCTGGAGATCCTGATGGGCTGAAGTCGGAGAGCGGGGAGAGGCCACAGATCACCATCAATGAGA  
 TTAGTGAATCACAGCATCAAGAAGGAGGATGTCATCTCCACTGTCAGTACCTCAATCTCATCAACTA  
 CTACAAGGGCCAGTACATCTCACACTGTCAGAGGACATCGTGGATGGCCATGAGCGGGCCATGCTCAAG  
 CGGCTCTGCGGATCGACTCCAAGTGTCTGCACCTCACTCCAAGGACTGGAGCAAGAGGGGGAAGTGG

**ACGCGT**ACGCGGCCGCTCGAGCAGAAACTCATCTCAGAAGAGGATCTGGCAGCAAATGATATCTGGATT  
 ACAAGGATGACGACGATAAGGTTTAA

**Protein Sequence:**

>RC209059 protein sequence  
 Red=Cloning site Green=Tags(s)

MAEVGEIIEGCRLPVLRNQNDEWPLAEILSVKDISGRKLFYVHYIDFNKRLDEWVTHEERLDLKKIQF  
 PKKEAKTPTKNGLPGRSPGSPEREVPASAQASGKTLPIPVQITLRFNLPKEREAIIPGGEPDQPLSSSSCL  
 QPNHRSTKRKVEVSPATPVPSETAPASVFPQNGAARRAVAAQPGRKRKSNCLGTDESDQSSDGIPASAP  
 RMTGSLVSDRSHDDIVTRMKNIECIELGRHRLKPWYFSPYPQELTTLPVLYLCEFLKYGRSLKCLQRHL  
 TKCDLRHPPGNEIYRKGTISFFEIDGRKNKSYSQNLCLLAKCFLDHKTLYYDTPFLFYVMTEYDCKGFH  
 IVGYFSKEKESTEDYNVACILTLPPYQRRYGKLLIEFSYELSKVEGKTGTPEKPLSDLGLLSYRSYWSQ  
 TILEILMGLKSESGERPQITINEISEITSIKKEDVISTLQYLNLIYNYKGQYILTLEDIVDGHERRMLK  
 RLLRIDSCLHFTPKDWSKRGKW

**TR**TRPLEQKLISEEDLAANDILDYKDDDDKV

**Chromatograms:**

[https://cdn.origene.com/chromatograms/mk6127\\_g09.zip](https://cdn.origene.com/chromatograms/mk6127_g09.zip)

**Restriction Sites:**

SgfI-MluI

**Cloning Scheme:**


**ACCN:** NM\_006388

**ORF Size:** 1539 bp

**OTI Disclaimer:** The molecular sequence of this clone aligns with the gene accession number as a point of reference only. However, individual transcript sequences of the same gene can differ through naturally occurring variations (e.g. polymorphisms), each with its own valid existence. This clone is substantially in agreement with the reference, but a complete review of all prevailing variants is recommended prior to use. [More info](#)

**OTI Annotation:** This clone was engineered to express the complete ORF with an expression tag. Expression varies depending on the nature of the gene.

**Components:** The ORF clone is ion-exchange column purified and shipped in a 2D barcoded Matrix tube containing 10ug of transfection-ready, dried plasmid DNA (reconstitute with 100 ul of water).

**Reconstitution Method:**

1. Centrifuge at 5,000xg for 5min.
2. Carefully open the tube and add 100ul of sterile water to dissolve the DNA.
3. Close the tube and incubate for 10 minutes at room temperature.
4. Briefly vortex the tube and then do a quick spin (less than 5000xg) to concentrate the liquid at the bottom.
5. Store the suspended plasmid at -20°C. The DNA is stable for at least one year from date of shipping when stored at -20°C.

**RefSeq:** [NM\\_006388.4](#)

**RefSeq Size:** 2248 bp

**RefSeq ORF:** 1542 bp

**Locus ID:** 10524

**UniProt ID:** [Q92993](#)

**Cytogenetics:** 11q13.1

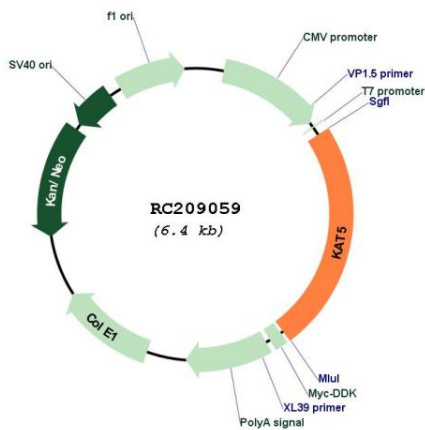
**Domains:** CHROMO, MOZ\_SAS

**Protein Families:** Druggable Genome, Transcription Factors

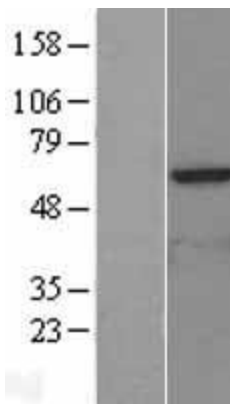
**MW:** 58.6 kDa

**Gene Summary:** The protein encoded by this gene belongs to the MYST family of histone acetyl transferases (HATs) and was originally isolated as an HIV-1 TAT-interactive protein. HATs play important roles in regulating chromatin remodeling, transcription and other nuclear processes by acetylating histone and nonhistone proteins. This protein is a histone acetylase that has a role in DNA repair and apoptosis and is thought to play an important role in signal transduction. Alternative splicing of this gene results in multiple transcript variants. [provided by RefSeq, Jul 2008]

**Product images:**



Circular map for RC209059



Western blot validation of overexpression lysate (Cat# [LY401920]) using anti-DDK antibody (Cat# [TA50011-100]). Left: Cell lysates from untransfected HEK293T cells; Right: Cell lysates from HEK293T cells transfected with RC209059 using transfection reagent MegaTran 2.0 (Cat# [TT210002]).



Coomassie blue staining of purified KAT5 protein (Cat# [TP309059]). The protein was produced from HEK293T cells transfected with KAT5 cDNA clone (Cat# RC209059) using MegaTran 2.0 (Cat# [TT210002]).