

Product datasheet for **RC209055**

LIS1 (PAFAH1B1) (NM_000430) Human Tagged ORF Clone

Product data:

Product Type:	Expression Plasmids
Product Name:	LIS1 (PAFAH1B1) (NM_000430) Human Tagged ORF Clone
Tag:	Myc-DDK
Symbol:	LIS1
Synonyms:	LIS1; LIS2; MDCR; MDS; NudF; PAFAH
Mammalian Cell Selection:	Neomycin
Vector:	pCMV6-Entry (PS100001)
E. coli Selection:	Kanamycin (25 ug/mL)
ORF Nucleotide Sequence:	>RC209055 representing NM_000430 Red=Cloning site Blue=ORF Green=Tags(s)

TTTTGTAATACGACTCACTATAGGGCGGCCGGAATTCGTCGACTGGATCCGGTACCGAGGAGATCTGCC
GCC**CGATCGCC**

ATGGTGTGTCCAGAGACAACGAGATGAACTAAATCGAGCTATAGCAGATTATCTTCGTTCAAATGGCT
ATGAAGAGGCATATTCAGTTTTTAAAAAGGAAGCTGAATTAGATGTGAATGAAGAATTAGATAAAAAAGTA
TGCTGGTCTTTTGGAAAAAAATGGACATCTGTTATTAGATTACAAAAGAAGGTTATGGAATTAGAATCA
AAGCTAAATGAAGCAAAAGAAGAATTTACGTCAGGTGGACCTCTGGTCAGAAACGAGACCCAAAAGAAT
GGATCCCGTCCGCCAGAAAAATATGCATTGAGTGGTCACAGGAGTCCAGTCACTCGAGTCATTTTCCA
TCCTGTGTTCAAGTGTATGGTCTCTGCTTCAGAGGATGCTACAATTAAGGTGTGGGATTATGAGACTGGA
GATTTTGAACGAACCTCTAAAGGACATACAGACTCTGTACAGGACATTTCAATCGACCACAGCGCAAGC
TTCTGGCTTCTGTTCTGCAGATATGACCATAAACTATGGGATTTTCAGGGCTTTGAATGCATCAGAAC
CATGCACGGCCATGACCACAATGTTTCTCAGTAGCCATCATGCCCAATGGAGATCATATAGTGTCTGCC
TCAAGGGATAAACTATAAAATGTGGGAAGTGCAAACTGGTACTGTGTGAAGACATTCACAGGACACA
GAGAATGGGTACGTATGGTACGGCCAAATCAAGATGGCACTCTGATAGCCAGCTGTTCCAATGACCAGAC
TGTGCGTGTATGGTTCGTAGCAACAAAGGAATGCAAGGCTGAGCTCCGAGAGCATGAGCATGTGGTAGAA
TGCAATTTCTGGGCTCCAGAAAGCTCATATTCCTCCATCTCTGAAGCAACAGGATCTGAGACTAAAAAA
GTGGTAAACCTGGGCCATTCTTGCTGTCTGGATCCAGAGACAAGACTATTAAGATGTGGGATGTCAGTAC
TGGCATGTGCCTTATGACCCTCGTGGGTCATGATAACTGGGTACGTGGAGTTCTGTTCCATTCTGGGGG
AAGTTTATTTGAGTTGTGCTGATGACAAGACCCTACGCGTATGGGATTACAAGAACAAGCGATGCATGA
AGACCCTCAATGCGCATGAACACTTTGTTACCTCCTTGGATTTCCACAAGACGGCACCCCTATGTCGTCAC
TGGCAGCGTAGATCAAACAGTAAAAGTGTGGGAGTGCCGT

AG**CGGACCG**ACGCGTACGCGGCCGCTCGAGCAGAACTCATCTCAGAAGAGGATCTGGCAGCAAATGATATCC
TGGATTACAAGGATGACGACGATAAGGTTTAA



[View online »](#)

Protein Sequence: >RC209055 representing NM_000430
Red=Cloning site Green=Tags(s)

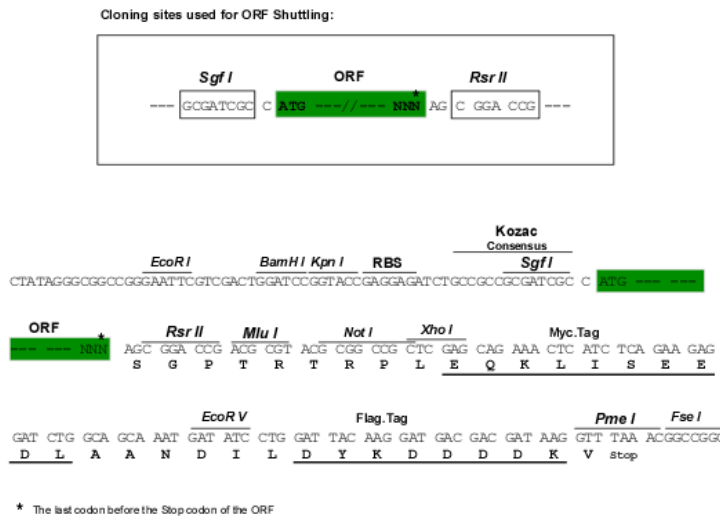
MVLSQRQRDELNRAIADYLRNSGYEEAYSVFKKEAELDVNEELDKKYAGLLEKKWTSVIRLQKKVMELES
 KLNEAKEEFTSGGPLGQKRDPKEWIPRPPEKYALSGHRSPVTRVIFHPVFSVMVSASEDATIKVWDYETG
 DFERTLKGHTDSVQDISFDHSGKLLASCADMTIKLWDFQGFECIRTMHGHDHNVSSVAIMPNGDHIVSA
 SRDKTIKMWEVQTYGCVKFTFGHREWVRMVRPNQDGLIASCSNDQTVRVVWVATKECKAELREHEHVVE
 CISWAPESSYSSI SEATGSETKKSGKPGPFLLSGSRDKTIKMWDVSTGMCLMTLVGHDNWRVGVLFHSGG
 KFILSCADDKTLRVWDYKNKRCMKTLNAHEHFVTSLDFHKTAPYVVTGSVDQTVKVWECR

SGPTRTRRLEQKLI SEEDLAANDILDYKDDDDKV

Chromatograms: https://cdn.origene.com/chromatograms/mg2866_g02.zip

Restriction Sites: SgfI-RsrII

Cloning Scheme:



ACCN: NM_000430

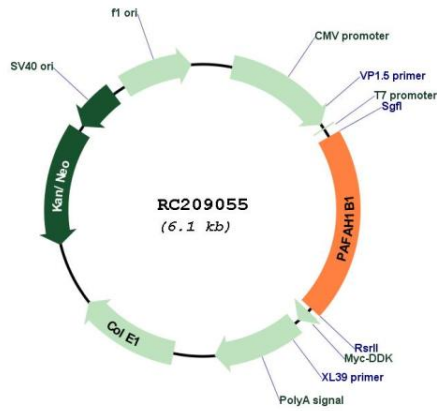
ORF Size: 1230 bp

OTI Disclaimer: Due to the inherent nature of this plasmid, standard methods to replicate additional amounts of DNA in *E. coli* are highly likely to result in mutations and/or rearrangements. Therefore, OriGene does not guarantee the capability to replicate this plasmid DNA. Additional amounts of DNA can be purchased from OriGene with batch-specific, full-sequence verification at a reduced cost. Please contact our customer care team at custsupport@origene.com or by calling 301.340.3188 option 3 for pricing and delivery.

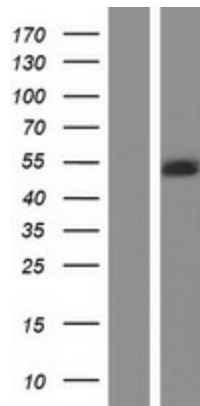
The molecular sequence of this clone aligns with the gene accession number as a point of reference only. However, individual transcript sequences of the same gene can differ through naturally occurring variations (e.g. polymorphisms), each with its own valid existence. This clone is substantially in agreement with the reference, but a complete review of all prevailing variants is recommended prior to use. [More info](#)

OTI Annotation:	This clone was engineered to express the complete ORF with an expression tag. Expression varies depending on the nature of the gene.
Components:	The ORF clone is ion-exchange column purified and shipped in a 2D barcoded Matrix tube containing 10ug of transfection-ready, dried plasmid DNA (reconstitute with 100 ul of water).
Reconstitution Method:	<ol style="list-style-type: none">1. Centrifuge at 5,000xg for 5min.2. Carefully open the tube and add 100ul of sterile water to dissolve the DNA.3. Close the tube and incubate for 10 minutes at room temperature.4. Briefly vortex the tube and then do a quick spin (less than 5000xg) to concentrate the liquid at the bottom.5. Store the suspended plasmid at -20°C. The DNA is stable for at least one year from date of shipping when stored at -20°C.
Note:	Plasmids are not sterile. For experiments where strict sterility is required, filtration with 0.22um filter is required.
RefSeq:	NM_000430.4
RefSeq Size:	5581 bp
RefSeq ORF:	1233 bp
Locus ID:	5048
UniProt ID:	P43034
Cytogenetics:	17p13.3
Domains:	WD40, LisH
Protein Pathways:	Ether lipid metabolism, Metabolic pathways
MW:	46.5 kDa
Gene Summary:	This locus was identified as encoding a gene that when mutated or lost caused the lissencephaly associated with Miller-Dieker lissencephaly syndrome. This gene encodes the non-catalytic alpha subunit of the intracellular Ib isoform of platelet-activating factor acetylhydrolase, a heterotrimeric enzyme that specifically catalyzes the removal of the acetyl group at the SN-2 position of platelet-activating factor (identified as 1-O-alkyl-2-acetyl-sn-glycerol-3-phosphorylcholine). Two other isoforms of intracellular platelet-activating factor acetylhydrolase exist: one composed of multiple subunits, the other, a single subunit. In addition, a single-subunit isoform of this enzyme is found in serum. [provided by RefSeq, Apr 2009]

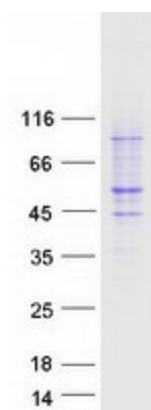
Product images:



Circular map for RC209055



Western blot validation of overexpression lysate (Cat# [LY424722]) using anti-DDK antibody (Cat# [TA50011-100]). Left: Cell lysates from untransfected HEK293T cells; Right: Cell lysates from HEK293T cells transfected with RC209055 using transfection reagent MegaTran 2.0 (Cat# [TT210002]).



Coomassie blue staining of purified PAF1B1 protein (Cat# [TP309055]). The protein was produced from HEK293T cells transfected with PAF1B1 cDNA clone (Cat# RC209055) using MegaTran 2.0 (Cat# [TT210002]).