

Product datasheet for **RC209052**

LAP3 (NM_015907) Human Tagged ORF Clone

Product data:

Product Type:	Expression Plasmids
Product Name:	LAP3 (NM_015907) Human Tagged ORF Clone
Tag:	Myc-DDK
Symbol:	LAP3
Synonyms:	HEL-S-106; LAP; LAPEP; PEPS
Mammalian Cell Selection:	Neomycin
Vector:	pCMV6-Entry (PS100001)
E. coli Selection:	Kanamycin (25 ug/mL)



[View online »](#)

ORF Nucleotide Sequence:

>RC209052 ORF sequence
 Red=Cloning site Blue=ORF Green=Tags(s)

TTTTGTAATACGACTCACTATAGGGCGGCCGGGAATTCGTCGACTGGATCCGGTACCGAGGAGATCTGCC
 GCC**GCGATCGCC**

ATGTTCTTGCTGCCTCTCCGGCTCGGGGCGAGTAGTCGTCGACGCTGGCCGTGAGACGTTTCGGGA
 GCCGGAGTCTCTCCACCGCAGACATGACGAAGGCCTTGTGTTTAGGAATCTATCCAAAGAAAAAGAAGA
 TGATGTGCCACAGTTCACAAGTGCAGGAGAGAATTTTGATAAATTGTTAGCTGGAAAGCTGAGAGAGACT
 TTGAACATATCTGGACCCTCTGAAGGCAGGGAAGACTCGAACCTTTTATGGTCTGCATCAGGACTTCC
 CCAGCGTGGTGTAGTTGGCCTCGGCAAAAAGGCAGCTGGAATCGACGAACAGGAAAAGCTGGCATGAAGG
 CAAAGAAAACATCAGAGCTGCTGTTGCAGCGGGTGCAGGCAGATTCAAGACCTGGAGCTCTCGTCTGTG
 GAGGTGGATCCCTGTGGAGACGCTCAGGCTGCTGCGGAGGGAGCGGTGCTTGGTCTCTATGAATACGATG
 ACCTAAAGCAAAAAAGAAGATGGCTGTGTCGGCAAAGCTCTATGGAAGTGGGGATCAGGAGCCTGGCA
 GAAAGGAGTCTGTTTGGCTTCTGGGCAGAACTTGGCACGCCAATTGATGGAGACGCCAGCCAATGAGATG
 ACGCCAACAGATTTGCCGAAATTATTGAGAAGAATCTCAAAAAGTCTAGTAGTAAAACCGAGGTCCATA
 TCAGACCCAAGTCTTGGATTGAGGAACAGGCAATGGGATCATTCTCAGTGTGGCCAAAGGATCTGACGA
 GCCCCAGTCTTCTTGGAAATCACTACAAAGGCAGCCCCAATGCAAACGAACCCCTGGTGTGTTGTT
 GGGAAAGGAATTACCTTTGACAGTGGTGGTATCTCCATCAAGGCTTCTGCAAATATGGACCTCATGAGGG
 CTGACATGGGAGGAGCTGCAACTATATGCTCAGCCATCGTGTCTGCTGCAAAGCTTAATTTGCCATTAA
 TATTATAGGTCTGGCCCTCTTTGTGAAAATATGCCAGCGGCAAGGCCAACAGCCGGGGGATGTTGTT
 AGAGCCAAAAACGGGAAGACCATCCAGTTGATAACACTGATGCTGAGGGGAGGCTCATACTGGCTGATG
 CGCTCTGTTACGCACACACGTTTAACCCGAAGGTCATCCTCAATGCCGCCACCTTAACAGGTGCCATGGA
 TGTAGCTTTGGGATCAGGTGCCACTGGGGTCTTTACCAATTCATCCTGGCTCTGGAACAAAACCTCTCGAG
 GCCAGCATTGAAACAGGGGACCGTGTCTGGAGGATGCCTCTCTCGAACATTATACAAGACAGGTTGTAG
 ATTGCCAGCTTGCTGATGTTAACAACATTGAAAAATACAGATCTGCAGGAGCATGTACAGCTGCAGCATT
 CCTGAAAGAATTCGTAACCTATCCTAAGTGGGCACATTTAGACATAGCAGGCGTGTGACCAACAAAGAT
 GAAGTTCCTATCTACGGAAAGGCATGACTGGGAGGCCCAAGGACTCTCATTGAGTCTTACTTCGTT
 TCAGTCAAGACAATGCT

ACGCGTACGCGGCCGCTCGAGCAGAAACTCATCTCAGAAGAGGATCTGGCAGCAAATGATATCCTGGATT
 ACAAGGATGACGACGATAAGGTTTAA

Protein Sequence:

>RC209052 protein sequence
 Red=Cloning site Green=Tags(s)

MFLLPLPAAGRVRVRRRLAVRRFGSRSLSTADMTKGLVLGIYSKEKEDDVPQFTSAGENFDKLLAGKLRET
 LNISGPPLKAGKTRTFYGLHQDFPSVVLVGLGKKAAGIDEQENWHEGKENIRAAVAAGCRQIQDLELSSV
 EVDPCGDAQAAAEGAVLGLYEYDDLKQKKKMAVSAKLYGSGDQEAQKGVLFASGQNLARQLMETPANEM
 TPTRFAEIIIEKNLKSASSKTEVHIRPKSWIEEQAMGSFLSVAKGSDEPPVFLEIHYKSPNANEPPLV
 GKGITFDSSGGISIKASANMDLMRADMGAATICSIVSAAKLNLPINIIGLAPLCENMPSGKANKPGD
 VVRAKNGKTIQVDNTDAEGRLLADALCYAHTFNPVKVILNAATLTGAMDVALGSGATGVFTNSSWLW
 NKLFEASIIETGDRVWRMPLFEHYTRQVDCQLADVNNIGKYRSAGACTAAAFLEFVTHPKWAHL
 DIAGVMTNKEVPEYLRKGMTGRPTRLIEFLLRFSDNA

TRTRPLEQKLISEEDLAANDILDYKDDDDKV

Chromatograms:

https://cdn.origene.com/chromatograms/mk6147_f03.zip

Restriction Sites:

Sgfl-MluI

Domains: Peptidase_M17

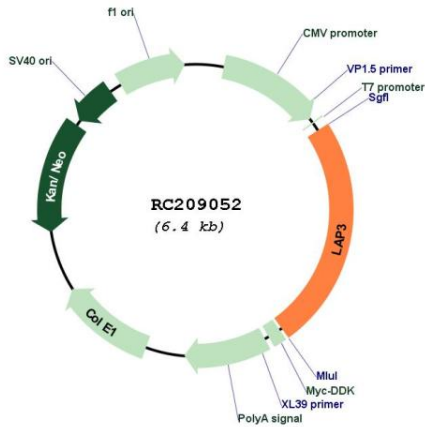
Protein Families: Druggable Genome, Protease

Protein Pathways: Arginine and proline metabolism, Glutathione metabolism, Metabolic pathways

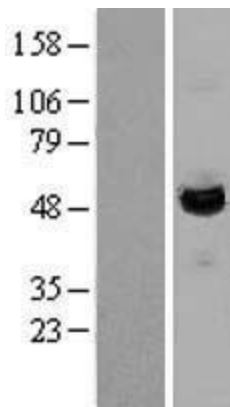
MW: 56.2 kDa

Gene Summary: Presumably involved in the processing and regular turnover of intracellular proteins. Catalyzes the removal of unsubstituted N-terminal amino acids from various peptides. [UniProtKB/Swiss-Prot Function]

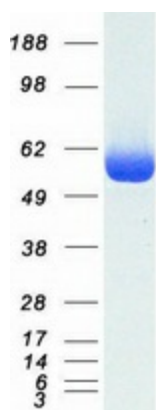
Product images:



Circular map for RC209052



Western blot validation of overexpression lysate (Cat# [LY402470]) using anti-DDK antibody (Cat# [TA50011-100]). Left: Cell lysates from untransfected HEK293T cells; Right: Cell lysates from HEK293T cells transfected with RC209052 using transfection reagent MegaTran 2.0 (Cat# [TT210002]).



Coomassie blue staining of purified LAP3 protein (Cat# [TP309052]). The protein was produced from HEK293T cells transfected with LAP3 cDNA clone (Cat# RC209052) using MegaTran 2.0 (Cat# [TT210002]).