

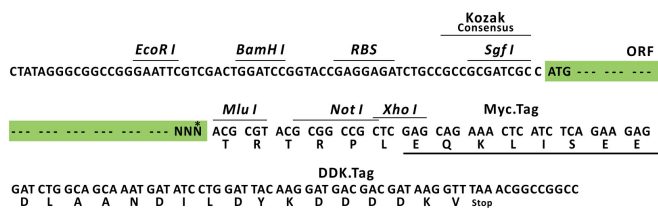
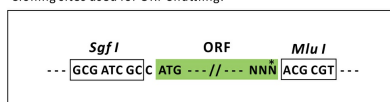
Product datasheet for RC209051L1

SCYL2 (NM_017988) Human Tagged Lenti ORF Clone

Product data:

Product Type:	Expression Plasmids
Product Name:	SCYL2 (NM_017988) Human Tagged Lenti ORF Clone
Tag:	Myc-DDK
Symbol:	SCYL2
Synonyms:	AMC4; AMCNACC; CVAK104
Mammalian Cell Selection:	None
Vector:	pLenti-C-Myc-DDK (PS100064)
E. coli Selection:	Chloramphenicol (34 ug/mL)
ORF Nucleotide Sequence:	The ORF insert of this clone is exactly the same as(RC209051).
Restriction Sites:	SgfI-MluI
Cloning Scheme:	

Cloning sites used for ORF Shuttling:



* The last codon before the Stop codon of the ORF.

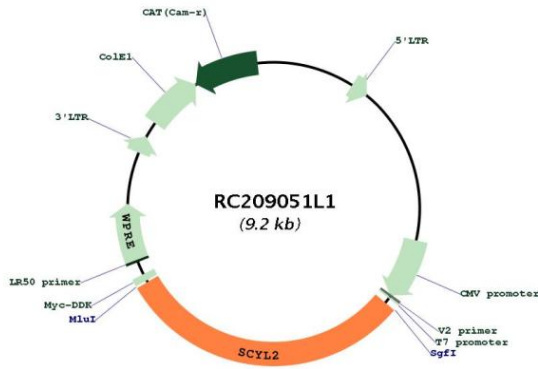
ACCN:	NM_017988
ORF Size:	2787 bp



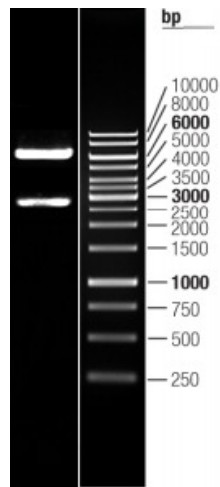
[View online >](#)

OTI Disclaimer:	The molecular sequence of this clone aligns with the gene accession number as a point of reference only. However, individual transcript sequences of the same gene can differ through naturally occurring variations (e.g. polymorphisms), each with its own valid existence. This clone is substantially in agreement with the reference, but a complete review of all prevailing variants is recommended prior to use. More info
OTI Annotation:	This clone was engineered to express the complete ORF with an expression tag. Expression varies depending on the nature of the gene.
Components:	The ORF clone is ion-exchange column purified and shipped in a 2D barcoded Matrix tube containing 10ug of transfection-ready, dried plasmid DNA (reconstitute with 100 ul of water).
Reconstitution Method:	<ol style="list-style-type: none">1. Centrifuge at 5,000xg for 5min.2. Carefully open the tube and add 100ul of sterile water to dissolve the DNA.3. Close the tube and incubate for 10 minutes at room temperature.4. Briefly vortex the tube and then do a quick spin (less than 5000xg) to concentrate the liquid at the bottom.5. Store the suspended plasmid at -20°C. The DNA is stable for at least one year from date of shipping when stored at -20°C.
RefSeq:	NM_017988.4
RefSeq Size:	3818 bp
RefSeq ORF:	2790 bp
Locus ID:	55681
UniProt ID:	Q6P3W7
Cytogenetics:	12q23.1
Protein Families:	Druggable Genome, Protein Kinase
MW:	103.5 kDa
Gene Summary:	The protein encoded by this gene associates with clathrin-coated complexes at the plasma membrane and with endocytic coated vesicles. The encoded protein phosphorylates the beta2 subunit of the plasma membrane adapter complex AP2 and interacts with clathrin, showing involvement in clathrin-dependent pathways between the trans-Golgi network and the endosomal system. In addition, this protein has a role in the Wnt signaling pathway by targeting frizzled 5 (Fzd5) for lysosomal degradation. Two transcript variants encoding the same protein have been found for this gene. [provided by RefSeq, Dec 2015]

Product images:



Circular map for RC209051L1



Double digestion of RC209051L1 using SgfI and MluI