

## Product datasheet for **RC209051**

### SCYL2 (NM\_017988) Human Tagged ORF Clone

#### Product data:

Product Type:	Expression Plasmids
Product Name:	SCYL2 (NM_017988) Human Tagged ORF Clone
Tag:	Myc-DDK
Symbol:	SCYL2
Synonyms:	AMC4; AMCNACC; CVAK104
Mammalian Cell Selection:	Neomycin
Vector:	pCMV6-Entry (PS100001)
E. coli Selection:	Kanamycin (25 ug/mL)



[View online »](#)

**ORF Nucleotide Sequence:**

>RC209051 representing NM\_017988  
 Red=Cloning site Blue=ORF Green=Tags(s)

TTTTGTAATACGACTCACTATAGGGCGGCCGGAATTCGTGACTGGATCCGGTACCGAGGAGATCTGCC  
 GCC**CGCATCGCC**

ATGGAGTCCATGCTTAATAAATTGAAGAGTACTGTTACAAAAGTAAACAGCTGATGCTACTAGTGCTGTAA  
 TGGGAAATCCTGTCACTAGAGAATTTGATGTTGGTCGACACATTGCCAGTGGTGGCAATGGGCTAGCTTG  
 GAAGATTTTTAATGGCACAAAAAGTCAACAAAGCAGGAAGTGGCAGTTTTTGTCTTTGATAAAAAACTG  
 ATTGACAAGTATCAAAAATTTGAAAAGGATCAAAATCATTGATTCTCTAAAACGAGGAGTCCAACAGTTAA  
 CTCGGCTTCGACACCCTCGACTTCTTACTGTCCAGCATCCTTTAGAAGAAATCCAGGGATTGCTTGGCATT  
 TTGTACAGAACCAAGTTTTGCCAGTTTAGCCAATGTTCTTGGTAACTGGGAAAATCTACCTTCCCCTATA  
 TCTCCAGACATTAAGGATTATAAACTTTATGATGTAGAAACCAATATGGTTTGGCTTCAGGTTTCTGAAG  
 GATTGTCATTCTGCATAGCAGTGTGAAAATGGTGCATGGAAATACACTCCTGAAAATATAATTTTGAA  
 TAAAAGTGGAGCCTGAAAATAATGGGTTTTGATTTTTGTGTATCATCAACCAATCCTTCTGAACAAGAG  
 CCTAAATTTCTTGTAAAAGAAATGGGACCCAAATTTACCTTCATTGTGCTTCCAATCCTGAATATTTGG  
 CTCTGAATACATACTTTCTGTGAGCTGTGAAACAGCCAGTGATATGTATTCTTTAGGAACTGTTATGTA  
 TGCTGTATTTAATAAAGGGAAACCTATATTTGAAGTCAACAAGCAAGATATTTACAAGAGTTTCAGTAGG  
 CAGTTGGATCAGTTGAGTCGTTTAGGATCTAGTTCACCTTACAAATATACCTGAGGAAAGTTCGTGAACATG  
 TAAAGCTACTGTTAAATGTAACCTCCGACTGTAAAGACCAGATGCAGATCAAATGACAAAGATTCCCTTCTT  
 TGATGATGTTGGTGCAGTAACTGCAATATTTGATACCTTATCCAAAGAGATAATCTTCAGAAATCA  
 CAGTTTTTCAAAGGACTGCCAAAGTTCTACAAAACCTGCCAAAGCGTGCATTGTGCAGAGAATTTTGC  
 CTTGTTGACTTCAGAATTTGTAACCCCTGACATGGTACCTTTTTGTTTTGCCCAATGTTCTACTTATTGTC  
 TGAGGAATGCACCAAGAAGAATATGTCAAATTAATTCTTCTGAACTTGGCCCTGTGTTTAAGCAGCAG  
 GAGCCAATCCAGATTTTGTAAATTTTCTACAAAAATGGATTTGCTACTAACCAAAACCCCTCCTGATG  
 AGATAAAGAACAGTGTTCTACCCATGGTTACAGAGCACTAGAAGCTCCTTCCATTCCAGATCCAGGAGCT  
 CTGTCTAAACATCATTCCAACCTTTGCAATCTTATAGACTACCCATCCATGAAAAACGCTTTGATACCA  
 AGAATTAATAAGCTTGCTACAAAACATCTTCCCTTGGGTTTCGTGTAATTCATTAGTGTGCTTAGGAA  
 AGATTTTGAATACTTGGATAAGTGGTTTGTACTTGATGATATCCTACCCTTCTACAACAAATTCATC  
 CAAGGAACCTGCGGTCTCATGGGAATTTTAGGATTTACAAATGTACTTTTACTCATAAGAAGTTGGGA  
 ATCACCAAGAGCAGCTGGCCGAAAAGTGTGCCTCATCTTATCCCCTGAGTATTGAAAACAATCTTA  
 ATCTTAATCAGTTCAATTTCTTCCGTCAAAAAGAAATGCTTAATAGATTGGAGTCTGAACATAA  
 GACTAAACTGGAGCAACTTCATATAATGCAAGAACAGCAGAAATCTTTGGATATAGGAAATCAAATGAAT  
 GTTTCTGAGGAGATGAAAGTTACAAATATTGGGAATCAGCAAAATGACAAAGTTTTTAACAACATTGGAG  
 CAGACCTTCTGACTGGCAGTGAAGTCCGAAAATAAAGAGGACGGTTACAGAATAAACATAAAAGAGCATC  
 ACTTACACTTGAAGAAAAACAAAATTAGCAAAAAGAACAGAGCAGGCACAGAAGCTGAAAAGCCAGCAG  
 CCTTTAAACCCCAAGTGCACACACCTGTTGCTACTGTTAAACAGACTAAGGACTTGACAGACACACTGA  
 TGGATAATATGTCATCCTTGACCAGCCTTCTGTTAGTACCCCTAAATCTTCTGCTTCAAGTACTTTTAC  
 TTCTGTTCCCTTCCATGGGCATTGGTATGATGTTTTCTACACCAACTGATAATAACAAGAGAAAATTTGACA  
 AATGGCCATAAATGCCAATATGGGCTTTACAGACTTCAGGATTCAACATGCCCGTTAATACAACAGCAACT  
 TCTACAGTAGTCCAAGCAGATTGGAGTGACCAAGATGACTCTGGGAACCTCCCACTTTGCCAAACTT  
 CAATGCTTTGAGTGTTCCTCCTGCTGGTCAAAGCAGACCCAACAAGACCCACAGATATGTCTGCCCTT  
 AATAATCTCTTTGGCCCTCAGAAACCAAAAGTTAGCATGAACCAGTTATCACAACAGAAACCAAATCAGT  
 GGCTTAATCAGTTTGTACCTCCTCAAGTTCTCCAATATGGGCAGTTCAGTAATGGGGACACAGATGAA  
 CGTGATAGGACAATCTGCTTTTGGTATGCAGGTAATCCTTTCTTAACCCACAGAACTTTGCACAGCCA  
 CCAACTACTATGACCAATAGCAGTTCAGCTAGCAATGATTTAAAAGATCTTTTTGGG

**ACGCGT**ACGCGGCCGCTCGAGCAGAAACTCATCTCAGAAGAGGATCTGGCAGCAAATGATATCCTGGATT  
 ACAAGGATGACGACGAT AAGGTTTAA

**Protein Sequence:** >RC209051 representing NM\_017988  
 Red=Cloning site Green=Tags(s)

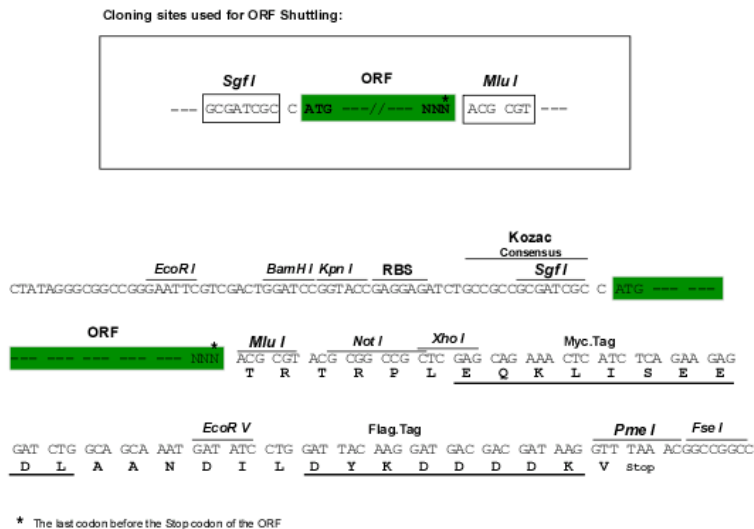
MESMLNKLKSTVTKVTADVTSAVMGNPVTREFDVGRHIASGGNGLAWKIFNGTKKSTKQEVAVFVFDKLL  
 IDKYQKFEKDQI IDSLKRGVQQLTRLRHPRLLTVQHPLEESRDCLAFCTEPVFASLANVLGNWENLPSPI  
 SPDIDKYKLYDVETKYGLLQVSEGLSFLHSSVKMVHGNI TPENIILNKSGAWKIMGFDFCVSSTNPSEQE  
 PKFPCKEWDPNLPSLCLPNPEYLAPEYILSVSCETASDMYSLGTVMYAVFNKGKPIFEVVKQDIYKFSR  
 QLDQLSRLGSSSLTNIPEEVREHVKLLLNVTPTVRPDADQMTKIPFFDDVGAVTLQYFDTLQFQRDNLQKS  
 QFFKGLPKVLPKLPKRVI VQRILPCLTSEFVNDPMVFPVLPNVLIIAEECTKEEYVKLILPELGPVFKQQ  
 EPIQILLIFLQKMDLLLTKTPPDEIKNSVLPVYRALEAPSIQIQELCLNIIPTFANLIDYPSMKNALIP  
 RIKNAQLTSSLAVRVNSLVCLGKILEYLDKWFVLDLILPFLQQIPSKEPAVLMGILGIYKCTFTHKLG  
 ITKEQLAGKVLPHLIPLSIENNLNLNQFNSFISVIKEMLNRLSEHKTKLEQLHIMQEQKSLDIGNQMN  
 VSEEMKVTNIGNQQIDKVFNNIGADLLTGSESENKEDGLQNKHKRASLTLEEKQLAKEQEQAQKLSQQ  
 PLPKQVHTPVATVKQTKDLTDTLMDNMSLTSLSVSTPKSSASSTFTSVP SMGIGMMFSTPTDNTKRNL  
 NGLNANMGFQTSGFNMPVNTNQFYSSPSTVGVTKMTLGTPTLPNFALSVPPAGAKQTQQRPTDMSAL  
 NNLFGPQKPKVSMNQLSQKPNQWLNQFVPPQGSPTMGSSVMGTQMNVIQSAFGMQGNPFFNPQNFAPQ  
 PTTMTNSSASNDLKDLFG

TRTRPLEQKLISEEDLAANDILDYKDDDDKV

**Restriction Sites:**

SgfI-MluI

**Cloning Scheme:**

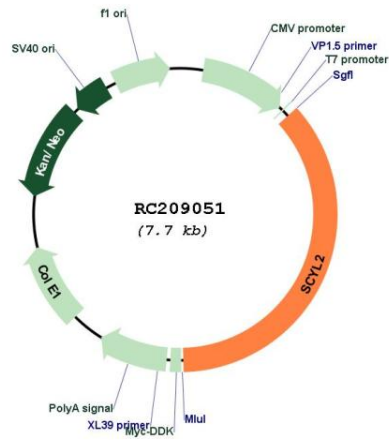


**ACCN:** NM\_017988

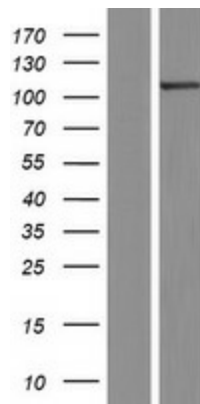
**ORF Size:** 2787 bp

<b>OTI Disclaimer:</b>	The molecular sequence of this clone aligns with the gene accession number as a point of reference only. However, individual transcript sequences of the same gene can differ through naturally occurring variations (e.g. polymorphisms), each with its own valid existence. This clone is substantially in agreement with the reference, but a complete review of all prevailing variants is recommended prior to use. <a href="#">More info</a>
<b>OTI Annotation:</b>	This clone was engineered to express the complete ORF with an expression tag. Expression varies depending on the nature of the gene.
<b>Components:</b>	The ORF clone is ion-exchange column purified and shipped in a 2D barcoded Matrix tube containing 10ug of transfection-ready, dried plasmid DNA (reconstitute with 100 ul of water).
<b>Reconstitution Method:</b>	<ol style="list-style-type: none"> <li>1. Centrifuge at 5,000xg for 5min.</li> <li>2. Carefully open the tube and add 100ul of sterile water to dissolve the DNA.</li> <li>3. Close the tube and incubate for 10 minutes at room temperature.</li> <li>4. Briefly vortex the tube and then do a quick spin (less than 5000xg) to concentrate the liquid at the bottom.</li> <li>5. Store the suspended plasmid at -20°C. The DNA is stable for at least one year from date of shipping when stored at -20°C.</li> </ol>
<b>RefSeq:</b>	<a href="#">NM_017988.6</a>
<b>RefSeq Size:</b>	3818 bp
<b>RefSeq ORF:</b>	2790 bp
<b>Locus ID:</b>	55681
<b>UniProt ID:</b>	<a href="#">Q6P3W7</a>
<b>Cytogenetics:</b>	12q23.1
<b>Protein Families:</b>	Druggable Genome, Protein Kinase
<b>MW:</b>	103.5 kDa
<b>Gene Summary:</b>	The protein encoded by this gene associates with clathrin-coated complexes at the plasma membrane and with endocytic coated vesicles. The encoded protein phosphorylates the beta2 subunit of the plasma membrane adapter complex AP2 and interacts with clathrin, showing involvement in clathrin-dependent pathways between the trans-Golgi network and the endosomal system. In addition, this protein has a role in the Wnt signaling pathway by targeting frizzled 5 (Fzd5) for lysosomal degradation. Two transcript variants encoding the same protein have been found for this gene. [provided by RefSeq, Dec 2015]

Product images:



Circular map for RC209051



Western blot validation of overexpression lysate (Cat# [LY413396]) using anti-DDK antibody (Cat# [TA50011-100]). Left: Cell lysates from untransfected HEK293T cells; Right: Cell lysates from HEK293T cells transfected with RC209051 using transfection reagent MegaTran 2.0 (Cat# [TT210002]).