

Product datasheet for **RC209050**

CCDC25 (NM_018246) Human Tagged ORF Clone

Product data:

Product Type:	Expression Plasmids
Tag:	Myc-DDK
Symbol:	CCDC25
Mammalian Cell Selection:	Neomycin
Vector:	pCMV6-Entry (PS100001)
E. coli Selection:	Kanamycin (25 ug/mL)

ORF Nucleotide Sequence: >RC209050 representing NM_018246
Red=Cloning site Blue=ORF Green=Tags(s)

TTTTGTAATACGACTCACTATAGGGCGCCGGGAATTCGTCGACTGGATCCGGTACCGAGGAGATCTGCC
GCC**CGGATCGCC**

ATGGTGTCTACTTCACCAGCAGCAGCGTTAATTCATCTGCCTACACTATTTACATGGGAAAAGATAAAT
ATGAAATGAAGATCTGATCAAGCATGGCTGGCCTGAAGATATCTGGTTTCATGTGGACAACTCTCTTC
GGCTCATGTATACCTTCGATTACATAAGGGAGAGAATATAGAAGACATCCCAAAGGAAGTCTGATGGAC
TGTGCCACCTTGTGAAGGCCAATAGCATTCAAGGCTGCAAGATGAACAACGTTAATGTGGTATATACCG
CGTGGTCTAACCTGAAGAAAACAGCTGACATGGATGTGGGGCAGATAGGCTTTCACAGGCAGAAGGATGT
AAAAATTGTGACAGTGGAGAAGAAAGTAAATGAGATCCTGAACCGATTAGAAAAAGCCAAAGTCGAGCGG
TTCCAGACCTAGCAGCAGAGAAAAGATGCAGAGATCGTGAAGAGAGGAATGAGAAAAAGCCAAATTC
AGGAAATGAAAAAGAGAGAAAAAGAAATGAAGAAGAAGAGGAAATGGATGAACTTAGGAGCTATTC
ATCACTAATGAAAGTTGAAAAATGTCTTCAAATCAGGATGGCAATGATTCAGATGAATTCATG

ACGCGTACGCGGCCGCTCGAGCAGAACTCATCTCAGAAGAGGATCTGGCAGCAAATGATATCCTGGATT
ACAAGGATGACGACGATAAGGTTTAA

Protein Sequence: >RC209050 representing NM_018246
Red=Cloning site Green=Tags(s)

MVYFYTSSSVNSSAYTIYMGDKYENEDLIKHWPEDIWFHVDKLSAHVYLRHLKGENIEDIPKEVLMD
CAHLVKANSIQGCKMNNVNVVYTPWSNLKKTADMVVGQIGFHRQKDKVIVTVEKKVNEILNRLEKTKVER
FPDLAAEKECRDREERNEKKAQIQEMKKREKEEMKKKREMDLRSYSSLMKVENMSSNQDGNDSDEFM

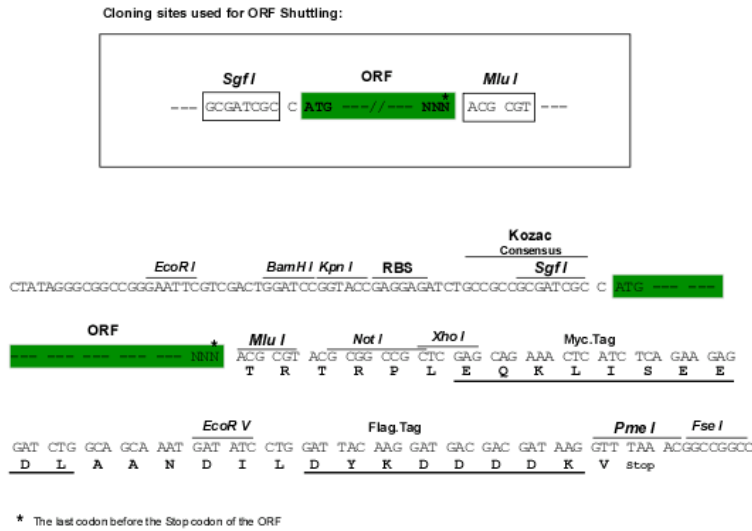
TRTRPLEQKLISEEDLAANDILDYKDDDDKV

Chromatograms: https://cdn.origene.com/chromatograms/mk6356_e02.zip



Restriction Sites: SgfI-MluI

Cloning Scheme:



ACCN: NM_018246

ORF Size: 624 bp

OTI Disclaimer: The molecular sequence of this clone aligns with the gene accession number as a point of reference only. However, individual transcript sequences of the same gene can differ through naturally occurring variations (e.g. polymorphisms), each with its own valid existence. This clone is substantially in agreement with the reference, but a complete review of all prevailing variants is recommended prior to use. [More info](#)

OTI Annotation: This clone was engineered to express the complete ORF with an expression tag. Expression varies depending on the nature of the gene.

Components: The ORF clone is ion-exchange column purified and shipped in a 2D barcoded Matrix tube containing 10ug of transfection-ready, dried plasmid DNA (reconstitute with 100 ul of water).

Reconstitution Method:

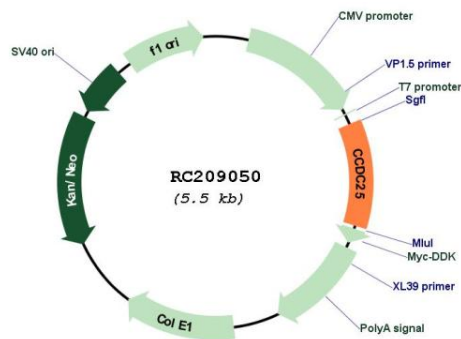
1. Centrifuge at 5,000xg for 5min.
2. Carefully open the tube and add 100ul of sterile water to dissolve the DNA.
3. Close the tube and incubate for 10 minutes at room temperature.
4. Briefly vortex the tube and then do a quick spin (less than 5000xg) to concentrate the liquid at the bottom.
5. Store the suspended plasmid at -20°C. The DNA is stable for at least one year from date of shipping when stored at -20°C.

Note: Plasmids are not sterile. For experiments where strict sterility is required, filtration with 0.22um filter is required.

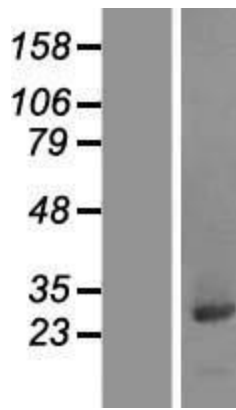
RefSeq:	NM_018246.3
RefSeq Size:	3653 bp
RefSeq ORF:	627 bp
Locus ID:	55246
UniProt ID:	Q86WR0
Cytogenetics:	8p21.1
MW:	24.3 kDa

Gene Summary: Transmembrane receptor that senses neutrophil extracellular traps (NETs) and triggers the ILK-PARVB pathway to enhance cell motility (PubMed:32528174). NETs are mainly composed of DNA fibers and are released by neutrophils to bind pathogens during inflammation (PubMed:32528174). Formation of NETs is also associated with cancer metastasis, NET-DNA acting as a chemotactic factor to attract cancer cells (PubMed:32528174). Specifically binds NETs on its extracellular region, in particular the 8-OHdG-enriched DNA present in NETs, and recruits ILK, initiating the ILK-PARVB cascade to induce cytoskeleton rearrangement and directional migration of cells (PubMed:32528174). In the context of cancer, promotes cancer metastasis by sensing NETs and promoting migration of tumor cells (PubMed:32528174). [UniProtKB/Swiss-Prot Function]

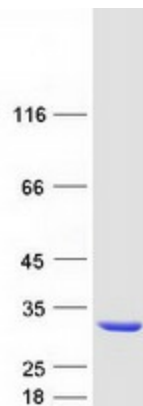
Product images:



Circular map for RC209050



Western blot validation of overexpression lysate (Cat# [LY413187]) using anti-DDK antibody (Cat# [TA50011-100]). Left: Cell lysates from un-transfected HEK293T cells; Right: Cell lysates from HEK293T cells transfected with RC209050 using transfection reagent MegaTran 2.0 (Cat# [TT210002]).



Coomassie blue staining of purified CCDC25 protein (Cat# [TP309050]). The protein was produced from HEK293T cells transfected with CCDC25 cDNA clone (Cat# RC209050) using MegaTran 2.0 (Cat# [TT210002]).