

Product datasheet for **RC209047**

Host cell factor C1 regulator 1 (HCFC1R1) (NM_017885) Human Tagged ORF Clone

Product data:

Product Type: Expression Plasmids
Product Name: Host cell factor C1 regulator 1 (HCFC1R1) (NM_017885) Human Tagged ORF Clone
Tag: Myc-DDK
Symbol: Host cell factor C1 regulator 1
Synonyms: HPIP
Mammalian Cell Selection: Neomycin
Vector: pCMV6-Entry (PS100001)
E. coli Selection: Kanamycin (25 ug/mL)
ORF Nucleotide Sequence: >RC209047 ORF sequence
Red=Cloning site Blue=ORF Green=Tags(s)

TTTTGTAATACGACTCACTATAGGGCGCCGGGAATTCGTCGACTGGATCCGGTACCGAGGAGATCTGCC
GCC**CGGATCGCC**

ATGATCCTGCAGCAGCCCTTGCAGCGAGGCCCCAGGGAGGGGCCAGCGCCTCCCGGGGCCGCCTTGG
GGGTGACTTGGGGCTGGACGCCAGCTCCCCTCTCCGAGGAGCTGTGCCATGAGACCAAGCGGCCT
GGAGGAGGAGCAGGAGCCTCTGCGCAAGCAGTTTCTGTCTGAGGAGAACATGGCCACCCACTTCTCTCAA
CTCAGCCTGCACAATGACCACCCCTACTGCAGCCCCCATGACCTTCTCCCAGCCCTGCCCCACTCA
GGAGCCCTTGCTCTGAGCTGCTTCTCTGGCGCTATCCTGGCAGCCTCATCCCTGAGGCCCTCCGTCTGCT
GAGGCTGGGGACACCCAGTCCCCCTACCCTGCAACCCAGCTGGGGACATAATGGAGCTC

ACGCGTACGCGGCCGCTCGAGCAGAACTCATCTCAGAAGAGGATCTGGCAGCAAATGATATCCTGGATT
ACAAGGATGACGACGATAAGGTTTAA

Protein Sequence: >RC209047 protein sequence
Red=Cloning site Green=Tags(s)
MILQQPLQRGPQGAQRLPRAALGVTWGLDASSPLRGAVPMSTKRRLLEEEQEPLRKQFLSEENMATHFSQ
LSLHNDHPYCSPMTFSPALPLRSPSELLWRYPGSLIPEALRLLRLGDTSPPPYPATPAGDIMEL

TRTRPLEQKLISEEDLAANDILDYKDDDDKV

Chromatograms: https://cdn.origene.com/chromatograms/mk6360_h11.zip

Restriction Sites: SgfI-MluI



[View online »](#)

Cloning Scheme:


ACCN: NM_017885

ORF Size: 414 bp

OTI Disclaimer: The molecular sequence of this clone aligns with the gene accession number as a point of reference only. However, individual transcript sequences of the same gene can differ through naturally occurring variations (e.g. polymorphisms), each with its own valid existence. This clone is substantially in agreement with the reference, but a complete review of all prevailing variants is recommended prior to use. [More info](#)

OTI Annotation: This clone was engineered to express the complete ORF with an expression tag. Expression varies depending on the nature of the gene.

Components: The ORF clone is ion-exchange column purified and shipped in a 2D barcoded Matrix tube containing 10ug of transfection-ready, dried plasmid DNA (reconstitute with 100 ul of water).

Reconstitution Method:

1. Centrifuge at 5,000xg for 5min.
2. Carefully open the tube and add 100ul of sterile water to dissolve the DNA.
3. Close the tube and incubate for 10 minutes at room temperature.
4. Briefly vortex the tube and then do a quick spin (less than 5000xg) to concentrate the liquid at the bottom.
5. Store the suspended plasmid at -20°C. The DNA is stable for at least one year from date of shipping when stored at -20°C.

RefSeq: [NM_017885.4](#)

RefSeq Size: 1023 bp

RefSeq ORF: 417 bp

Locus ID: 54985

UniProt ID: [Q9NWW0](#)

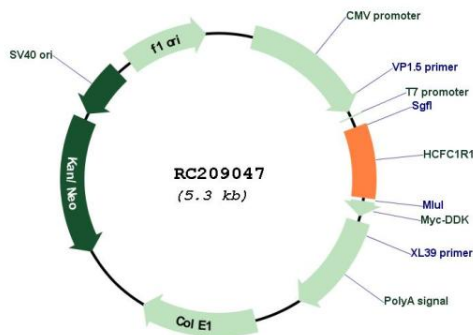
Cytogenetics: 16p13.3

Protein Families: Druggable Genome

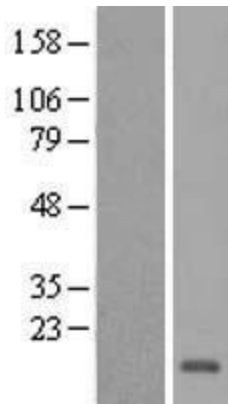
MW: 15.3 kDa

Gene Summary: Regulates HCFC1 activity by modulating its subcellular localization. Overexpression of HCFC1R1 leads to accumulation of HCFC1 in the cytoplasm. HCFC1R1-mediated export may provide the pool of cytoplasmic HCFC1 required for import of virion-derived VP16 into the nucleus.[UniProtKB/Swiss-Prot Function]

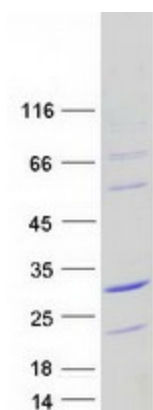
Product images:



Circular map for RC209047



Western blot validation of overexpression lysate (Cat# [LY424321]) using anti-DDK antibody (Cat# [TA50011-100]). Left: Cell lysates from untransfected HEK293T cells; Right: Cell lysates from HEK293T cells transfected with [RC217374] using transfection reagent MegaTran 2.0 (Cat# [TT210002]).



Coomassie blue staining of purified HCFC1R1 protein (Cat# [TP309047]). The protein was produced from HEK293T cells transfected with HCFC1R1 cDNA clone (Cat# RC209047) using MegaTran 2.0 (Cat# [TT210002]).