

Product datasheet for **RC209046**

ABCB10 (NM_012089) Human Tagged ORF Clone

Product data:

Product Type:	Expression Plasmids
Product Name:	ABCB10 (NM_012089) Human Tagged ORF Clone
Tag:	Myc-DDK
Symbol:	ABCB10
Synonyms:	EST20237; M-ABC2; MTABC2
Mammalian Cell Selection:	Neomycin
Vector:	pCMV6-Entry (PS100001)
E. coli Selection:	Kanamycin (25 ug/mL)



[View online »](#)

ORF Nucleotide Sequence:

>RC209046 representing NM_012089
 Red=Cloning site Blue=ORF Green=Tags(s)

TTTTGTAATACGACTCACTATAGGGCGGCCGGGAATTCGTCGACTGGATCCGGTACCGAGGAGATCTGCC
 GCC**CGGATCGCC**

ATGCGAGGCCCCCTGCCTGGCCGCTGCGGCTGCTCGAGCCACCGAGCCCTGCCAGCCAGTCCGGCTCC
 TGCCGGTAGCCTGCGTGTGGGCCGCGGCCAGCCGCTTCCGGGTCCCTATCGCCGTTCACTGGCCTGAG
 GCCGGCGCGGCTATGGGGCGCGGGGCCCGCTGCTCTGGGGCGTTGGAGCCGCGCGCCGCTGGAGGAGC
 GGCTGCCGGGGCGGGGTCCGGGCGCTCGGGGGCGTCTGGGCTCGCGCGGCTCCTGGGGCTGTGGG
 CTCGCGGCCCGGAGCTGCAGGTGCGGGGCTTTTGGCGGCCAGGCGCTCCTCGGCTCCCGCGCGCCCG
 GTTCCCGGGCGGTCCCGAGCCGCTGCCTGGGCAGGGGACGAGGCTGGCGGCGCGGGCCGGCGCGCCT
 CCCGGGACAAGGGGCGGCTGCGCCCCGACGGCCGGACTCCCGGAGGCCCGGAAGCTCCTGGGGCTGG
 CGTACCCTGAGCCCGGAGGCTGGCAGCTGCGGTTGGATTTCTCACGATGTCCAGTGTATCTCCATGTC
 TGCCCCTTTCTTCTGGGAAGATCATTGATGTATCTATACCAACCCACTGTGGACTACAGCGACAAC
 CTGACCCGCTCTGCCTAGGGCTCAGTGGCGTGTTCCTGTGTGGTGTGCCGCAATGCCATTCTGTCT
 ACCTCATGCAAATTCAGGTCAGCGCATTGTGAATAGGCTGAGAATTCATTATTTCTCTCCATTCTGAG
 GCAGGAGGTTGCTTTCTTTGACAAGACTCGCACAGGAGAATTGATTAACCGCCTCTCATCAGACTGCA
 CTCCTGGGGCGCTCAGTACTGAAAACCTCAGATGGGCTCAGGGCCGGGGCCAGGCTTCTGTAGGCA
 TCAGTATGATGTTTTTGTCTCACCTAATCTGGCCACCTTTGTTTTGAGCGTGGTGCCTCCAGTGTCAAT
 CATTGCTGTAATTTATGGGCGATATCTACGAAACTGACCAAAGTCACTCAGGATTCCTGGCACAAGCC
 ACTCAGTAGCTGAGGAACGTATTGAAATGTAAGAAGTTCGAGCTTTTGGAAAGAAATGACTGAAA
 TCGAAGAAATGCCAGCAAAGTGGACCATGTAATGCAGTTAGCAAAGAAAGAGGCATTCGCCGGGCTGG
 TTTCTTTGGAGCAACTGGGCTCTCCGAAACCTGATCGTGCTTTCTGTCTGTACAAAGGAGGGCTGTG
 ATGGGCAGTGCCACATGACCGTGGGTGAACTCTCTTCTTCTAATGTATGCTTTCTGGGTTGGAATAA
 GCATTGGAGGCTGAGCTCTTTCTACTCGGAGCTGATGAAAGGACTGGGTGCAGGGGGCGCCTCTGGGA
 GCTCCTGGAGAGAGGCCAAGCTGCCTTTTAAACGAGGGGTCATCTTAAATGAGAAAAGCTTCCAGGGT
 GCTTTGGAGTTAAGAACGTGCATTTTGCCTATCCAGCTCGCCAGAGGTGCCCATATTTCCAGGATTTCA
 GCCTTTCCATTCCGTGAGGATCTGTCACGGCACTGGTTGGCCCAAGTGGTTCTGGCAAATCAACAGTGT
 TCACTCCTGCTGAGGTTGTACGCCCTGCTTCTGGAATATTAGTCTTGATGGCCATGACATCCGTCAG
 CTAACCAGTGTGGCTGAGATCCAAAATTTGGACAGTGAGTCAGGAACCCATTTGTTTTCTTGTCTA
 TTGCTGAGAACATTGCTTATGGTGTGATGACCCCTTCTCTGTGACCGCTGAGGAAATCCAGAGAGTGGC
 TGAAGTGGCAATGCAGTGGCCTTCATCCGGAATTTCCCAAGGGTTCAACACTGTGGTTGGAGAAAAG
 GGTGTTCTCCTCTCAGGTGGGAGAAAACAGCGGATTGCGATTGCCCGTGTCTGTAAAGAAATCCAAAA
 TTCTTCTCCTAGATGAAGCAACCAGTGCCTGGATGCCGAAAATGAGTACCTTGTCAAGAAGCTCTAGA
 TCGACTGATGGATGGAAGAACGGTGTAGTTATTGCCATCGTCTGTCCACCATTAAGAATGCTAATATG
 GTTGCTGTTCTTGACCAAGGAAAATTAAGTGAATATGAAAACATGAAGAGCTGCTTTCAAACCAAATG
 GGATATACAGAAAATAATGAACAAACAAGTTTTATTTTCAGCA

ACGCGTACGCGGCCGCTCGAGCAGAAACTCATCTCAGAAGAGGATCTGGCAGCAAATGATATCCTGGATT
 ACAAGGATGACGACGATAAGGTTTAA

Protein Sequence: >RC209046 representing NM_012089
Red=Cloning site Green=Tags(s)

```
MRGPPAWPLRLLLEPPSPAEPGRLLPVACVWAAASRVPGSLSPFTGLRPARLWGAGPALLWGVAARRWRS
GCRGGPGASRGVLGLARLLGLWARGPGSCRCGAFAGPGAPRLPRARFPGPAAAAWAGDEAWRRGPAAP
PGDKGRRLRPAAGLPEARLKLGLAYPERRRLAAAVGFLTMSSVISMSAPFFLGKIIDVIYTNPTVDYSDN
LTRLCLGLSAVFLCGAAANAIIRVYLMQTSQRI VNRRLTSLFSSILRQEVAFD KTRTGELINRLSSDTA
LLGRSVTENLSDGLRAGAQASVGI SMMFFVSPNLATFVLSVVPVSI IAVIYGRYL RKLTKVTQDSL AQA
TQLAEERIGNVRTVRAF GKEMTEIEKYASKVDHVMQLARKEAFARAGFFGATGLSGNLIVLSVLYKGLL
MGAHMTV GELSSFLMYAFWVGI SIGGLSSFYSELMKGLGAGGRLWELLEREPKLPFNEG VILNEKSFQG
ALEFKNVHFAYPARPEVP IFQDFSL SIPSGSVTALVGP SGSGKSTVLSLLLRLYDPASGTISLDGHDIRQ
LNPVWLRSKIGTVSQEPILFSCSIAENIAYGADDPSSVT AEEIQRVAEVANAVAFIRNFPQGFNTVVGEK
GVLLSGGQKQRIAIARALLKNPKILLLDEATSALDAENEYLVQEALDRLMDGRTVLVIAHRLSTIKNAMM
VAVLDQGKITEY GKHEELL SKPNGIYRKL MNKQSFISA
```

TRTRPLEQKLI SEEDLAANDILDYKDDDDKV

Chromatograms: https://cdn.origene.com/chromatograms/mg3853_e09.zip

Restriction Sites: Sgfl-MluI

Cloning Scheme:

Cloning sites used for ORF Shuttling:



* The last codon before the Stop codon of the ORF

ACCN: NM_012089

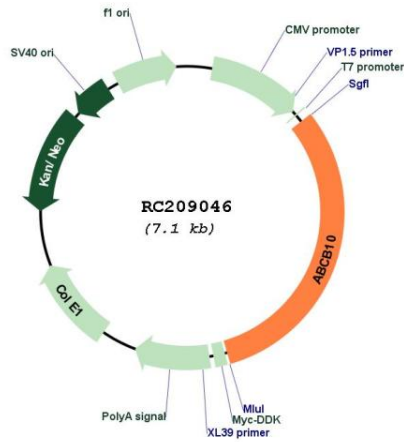
ORF Size: 2214 bp

OTI Disclaimer: The molecular sequence of this clone aligns with the gene accession number as a point of reference only. However, individual transcript sequences of the same gene can differ through naturally occurring variations (e.g. polymorphisms), each with its own valid existence. This clone is substantially in agreement with the reference, but a complete review of all prevailing variants is recommended prior to use. [More info](#)

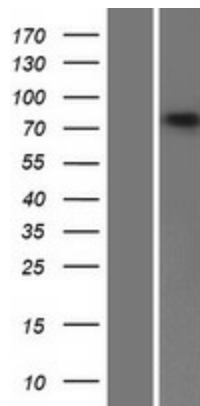
OTI Annotation: This clone was engineered to express the complete ORF with an expression tag. Expression varies depending on the nature of the gene.

Components:	The ORF clone is ion-exchange column purified and shipped in a 2D barcoded Matrix tube containing 10ug of transfection-ready, dried plasmid DNA (reconstitute with 100 ul of water).
Reconstitution Method:	<ol style="list-style-type: none">1. Centrifuge at 5,000xg for 5min.2. Carefully open the tube and add 100ul of sterile water to dissolve the DNA.3. Close the tube and incubate for 10 minutes at room temperature.4. Briefly vortex the tube and then do a quick spin (less than 5000xg) to concentrate the liquid at the bottom.5. Store the suspended plasmid at -20°C. The DNA is stable for at least one year from date of shipping when stored at -20°C.
Note:	Plasmids are not sterile. For experiments where strict sterility is required, filtration with 0.22um filter is required.
RefSeq:	NM_012089.3
RefSeq Size:	3857 bp
RefSeq ORF:	2217 bp
Locus ID:	23456
UniProt ID:	Q9NRK6
Cytogenetics:	1q42.13
Domains:	ABC_membrane, ABC_tran, AAA
Protein Families:	Druggable Genome, Transmembrane
Protein Pathways:	ABC transporters
MW:	79 kDa
Gene Summary:	The membrane-associated protein encoded by this gene is a member of the superfamily of ATP-binding cassette (ABC) transporters. ABC proteins transport various molecules across extra- and intra-cellular membranes. ABC genes are divided into seven distinct subfamilies (ABC1, MDR/TAP, MRP, ALD, OABP, GCN20, White). This protein is a member of the MDR/TAP subfamily. Members of the MDR/TAP subfamily are involved in multidrug resistance. The function of this mitochondrial protein is unknown. [provided by RefSeq, Jul 2008]

Product images:



Circular map for RC209046



Western blot validation of overexpression lysate (Cat# [LY415992]) using anti-DDK antibody (Cat# [TA50011-100]). Left: Cell lysates from untransfected HEK293T cells; Right: Cell lysates from HEK293T cells transfected with RC209046 using transfection reagent MegaTran 2.0 (Cat# [TT210002]).