

Product datasheet for RC209041

CDA11 (TATDN1) (NM_032026) Human Tagged ORF Clone

Product data:

Product Type:	Expression Plasmids
Product Name:	CDA11 (TATDN1) (NM_032026) Human Tagged ORF Clone
Tag:	Myc-DDK
Symbol:	CDA11
Synonyms:	CDA11
Mammalian Cell Selection:	Neomycin
Vector:	pCMV6-Entry (PS100001)
E. coli Selection:	Kanamycin (25 ug/mL)
ORF Nucleotide Sequence:	>RC209041 ORF sequence Red=Cloning site Blue=ORF Green=Tags(s)

TTTTGTAATACGACTCACTATAGGGCGGCCGGAATTCGTCGACTGGATCCGGTACCGAGGAGATCTGCC
GCC**CGATCGCC**

ATGAGTCGCTTCAAGTTTATCGATATTGGTATCAACTTGACTGACCCTATGTTTCAGAGGAATTTATAGGG
GGGTTCAAAGCATCAAGATGACTTACAGGATGTAATAGGGAGAGCTGTCGAGATTGGTGTAAAAAGTT
TATGATTACAGGTGAAATCTACAAGACAGTAAAGATGCACTGCATTTGGCACAAACAAATGGTATGTTT
TTCAGTACAGTTGGATGTCATCCTACAAGATGTGGTGAATTTGAAAAGAATAACCCTGATCTTTACTTAA
AGGAGTTGCTAAATCTTGCTGAAAACAATAAAGGGAAAGTTGTGGCAATAGGAGAATGCGGACTTGATTT
TGACCGACTGCAGTTTTGTCCTAAAGATACTCAACTCAAATATTTGAAAACAGTTGAACTGTCAGAA
CAAACAAAATTACCAATGTTTCTTCATTGTCGAACTCACATGCTGAATTTTGGACATAACGAAAAGAA
ATAGAGATCGGTGTAGGGGGAGTGGTGCATTTGATGGTACCAAGGAAGCAGCAGCTGCTTTGAT
TGACTTGGATCTTTATATAGGATTTAATGGTTGCTCACTGAAAACGAAGCTAATTTGGAAGTTTGAAG
TCAATTCCTAGTAAAAATTAATGATTGAGACAGATGCACCTGGTGTGGAGTCAAAAGTACACATGCTG
GATCAAAATATAAGAAGTGCATTTCTACCAAAAAGAAGTGGGAAAGTGGGCACTGCTTAAAAGACAG
AAATGAACCTGCCATATAATTCAAATATTGGAGATAATGTCAGCAGTGAGAGATGAGGATCCACTGGAA
TTAGCCAATACTATATAACAATACTATTAAGTATTTTTTCTGGAATA

ACGCGTACGCGGCCGCTCGAGCAGAAAACCTCATCTCAGAAGAGGATCTGGCAGCAAATGATATCCTGGATT
ACAAGGATGACGACGATAAGGTTTAA



[View online »](#)

Protein Sequence: >RC209041 protein sequence
Red=Cloning site Green=Tags(s)

```
MSRFKFIIDIGINLTDPMFRGIYRGVQKHQDDLQDVI GRAVEIGVKKFMITGGNLQDSKDALHLAQTNGMF
FSTVGGCHPTRCGEFKNNPDLYLKELLNLAENNKGVVAIGECGLDFDRLQFCPKDQLKYFEKQFELSE
QTKLPMFLHCRNSHAFLDITKRNDRVCVGGVVHVSFDGTKEAAAALIDL DLYIGFNGCSLKTEANLEVLK
SIPSEKLMIEDAPWCGVKSTHAGSKYIRTAFTP KKKWESGHCLKDRNEPCHIIQILEIMSAVRDEDPLE
LANTLYNNTIKVFFPGI
```

TRTRPLEQKLISEEDLAANDILDYKDDDDKV

Chromatograms: https://cdn.origene.com/chromatograms/mk6357_e01.zip

Restriction Sites: SgfI-MluI

Cloning Scheme:



ACCN: NM_032026

ORF Size: 891 bp

OTI Disclaimer: The molecular sequence of this clone aligns with the gene accession number as a point of reference only. However, individual transcript sequences of the same gene can differ through naturally occurring variations (e.g. polymorphisms), each with its own valid existence. This clone is substantially in agreement with the reference, but a complete review of all prevailing variants is recommended prior to use. [More info](#)

OTI Annotation: This clone was engineered to express the complete ORF with an expression tag. Expression varies depending on the nature of the gene.

Components: The ORF clone is ion-exchange column purified and shipped in a 2D barcoded Matrix tube containing 10ug of transfection-ready, dried plasmid DNA (reconstitute with 100 ul of water).

Reconstitution Method:

1. Centrifuge at 5,000xg for 5min.
2. Carefully open the tube and add 100ul of sterile water to dissolve the DNA.
3. Close the tube and incubate for 10 minutes at room temperature.
4. Briefly vortex the tube and then do a quick spin (less than 5000xg) to concentrate the liquid at the bottom.
5. Store the suspended plasmid at -20°C. The DNA is stable for at least one year from date of shipping when stored at -20°C.

RefSeq: [NM_032026.4](#)

RefSeq Size: 1046 bp

RefSeq ORF: 894 bp

Locus ID: 83940

UniProt ID: [Q6P1N9](#)

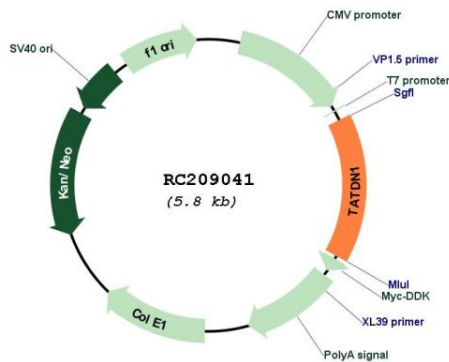
Cytogenetics: 8q24.13

Domains: TatD_DNase

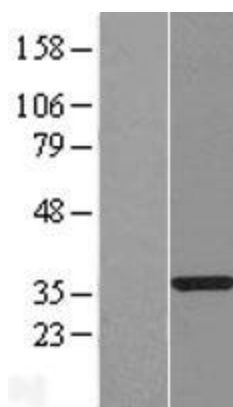
MW: 33.6 kDa

Gene Summary: Putative deoxyribonuclease.[UniProtKB/Swiss-Prot Function]

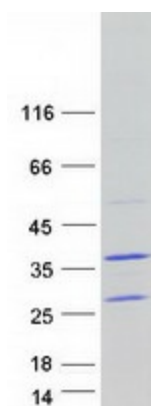
Product images:



Circular map for RC209041



Western blot validation of overexpression lysate (Cat# [LY410359]) using anti-DDK antibody (Cat# [TA50011-100]). Left: Cell lysates from untransfected HEK293T cells; Right: Cell lysates from HEK293T cells transfected with RC209041 using transfection reagent MegaTran 2.0 (Cat# [TT210002]).



Coomassie blue staining of purified TATDN1 protein (Cat# [TP309041]). The protein was produced from HEK293T cells transfected with TATDN1 cDNA clone (Cat# RC209041) using MegaTran 2.0 (Cat# [TT210002]).