

Product datasheet for **RC209031**

TJAP1 (NM_080604) Human Tagged ORF Clone

Product data:

Product Type:	Expression Plasmids
Product Name:	TJAP1 (NM_080604) Human Tagged ORF Clone
Tag:	Myc-DDK
Symbol:	TJAP1
Synonyms:	PILT; TJP4
Mammalian Cell Selection:	Neomycin
Vector:	pCMV6-Entry (PS100001)
E. coli Selection:	Kanamycin (25 ug/mL)



[View online »](#)

ORF Nucleotide Sequence:

>RC209031 ORF sequence
 Red=Cloning site Blue=ORF Green=Tags(s)

TTTTGTAATACGACTCACTATAGGGCGGCCGGAATTCGTCGACTGGATCCGGTACCGAGGAGATCTGCC
 GCC**CGGATCGCC**

ATGACTAGTGCCGCCCTGCTAAGAAACCTACCGTAAGGCACCACCAGAGCATCGGGAGCTGCGTTTGG
 AAATTCCTGGATCCCGGCTTGAGCAGGAGGAACCCCTGACTGATGCAGAAAGGATGAAGCTTTACAGGA
 GGAGAATGAAGAGCTTCGCCGGCCTGGCCTCCGCCACCAGACGCACTGAGGCCCTGGAACGTGAGCTG
 GAAATTGGGCAGGACTGCCTGGAGCTGGAGCTGGGCCAGAGCCGCGAGGAGCTGGACAAATTTAAGGATA
 AGTTCCGAGGCTGCAGAACAGCTACACGGCTCCAGCGGACCAACCAGGAGTTGGAGGACAAGCTGCA
 CACTGATCAAGAAGGCTGAGATGGATAGGAAGACGCTGGACTGGGAGATTGTGGAGCTGACCAACAAG
 CTGCTGGATGCCAAGAACACCATCAACAAGCTGGAAGAGCTCAATGAGCGGTACCGGCTGGACTGCAACC
 TGGCTGTACAGCTCCTCAAGTCAACAAGTCCACTTCCGAAACCACAAGTTGCCGATCTGCCCTGTGA
 GCTACAGGACATGGTTCGAAACATTTGCACAGTGGTCAAGAGGCCGCCAGCCAGTCTGCTCCAGC
 CTAGCCCCAGGGCTGTGGTGCCTACCTCAGTCATTGCCCGAGTGTAGAGAAGCCGGAGTCTACTGC
 TCAATTACGCCAGTCAGGCAGCGCCGGCGCCCTTGGCTGAGGATGTCTTTGTGCATGTGGACATGAG
 TGAGGGTGTCCCAGGTGATCCAGCCAGTCCCCGGCCCCGTCAGCCCCACCCACAACCAATGGGGAG
 TGCCACTCTCTGGTACTGCCAGGGCTCCCCGGAGGAAGAGCTGCCCTGCCAGCCTTTGAGAAGCTGA
 ACCCTACCCAACCCGCTCCACCACACCCACTGTATCTGGCCGAGGGTAATAGAGTTCTCTGAGGA
 TAAGTTTCGGATCCCCGCAACAGCCCCCTGCCAACTGCACTTACGCTACCCGCCAGGCCATTTCCCTG
 AGCTGGTAGAGGAGGGGAGTGAAGGGGCCCGCCAGCCAGTCCAGCACCCCTGCCAGCCAGG
 CCTCACCCACCAGCCAGCCAGCCAGCCCTAACACTCAGTCCCCAGCTAGCTCTGCCAGCTGTA
 AGAGGACCTGCTGGTCACTGGCAGCGGCATTTGTGGACGTAATCCACCACCTGCTGCTGGCCAG
 CGCACAGCCTTTGGACGCGATGCCCTCCCTGAGCTGCAGCGCCATTTTGGCCATAGCCCCGCTGACAGAG
 ATGAGGTGGTCCAGGCACCTTCTGCCGACCCGAAGAGAGTGAAGCTTTTGTACCCACAGAACCTGACTC
 TGGCTTTCCAGGGAGGAAGAAGAGCTGAACCTGCCTATCAGTCTGAGGAAGAGCGCCAGAGCCTGCTG
 CCCATTAACAGGGGCACAGAGGAGGGGCCAGGCACTTCCACACCCAGGGCAGGGCTGGCCACTCCCCA
 GCTCCAGTCGCCCCAGCGCAGCCCAAGAGGATGGGGTTTACCACCTGCACCCGAAGGACAGCCTGAC
 CCAGGCCAGGAGCAGGGCAACCTGCTCAAC

ACGCGTACGCGGCCGCTCGAGCAGAAACTCATCTCAGAAGAGGATCTGGCAGCAAATGATATCCTGGATT
 ACAAGGATGACGACGATAAGGTTTAA

Protein Sequence:

>RC209031 protein sequence
 Red=Cloning site Green=Tags(s)

MTSAAPAKKPYRKAPPEHRELRLLEIPGSRLEQEEPLTDAERMKLLQEENEELRRRLASATRRTEALEREL
 EIQDCLLELELQGSREELDKFKDKFRRLQNSYASQRTNQLEDKLHTLIKKAEMDRKTLDWEIVELTNK
 LLDKNTINKLEELNERYRLDCNLAVQLKCNKSHFRNHKFADLPCELQDMVRKHLHSGQEAAASPGPAPS
 LAPGAVVPTSVIARVLEKPESELLNSAQSGSAGRPLAEDVFVHVDMSEGVPGDPASPPAPGSPTQPNGE
 CHSLGTARGSPPEELPLPAFEKLNYPYTPSPHPLYPGRRVIEFSEDKVRIPRNSPLPNCTYATRQAI
 SLVEEGSERARSPVPSTPASAQASPHHQSPAPLTLAPASSASSEEDLLVSWQRAFVDRTPPPAAVAQ
 RTAFGRDALPELQRHFAHSPADRDEVVQAPSARPEESELLLPTEPDSGFPREEEELNLPISPEEERQSL
 PINRGTEEGPGTSHTEGRAWPLPSSSRPQRSPKRMGVHHLHRKDSLTAQAEQGNLLN

TRTRPLEQKLISEEDLAANDILDYKDDDDKV

Chromatograms:

https://cdn.origene.com/chromatograms/mk6524_f07.zip

Restriction Sites:

Sgfl-MluI

Cloning Scheme:


ACCN: NM_080604

ORF Size: 1641 bp

OTI Disclaimer: The molecular sequence of this clone aligns with the gene accession number as a point of reference only. However, individual transcript sequences of the same gene can differ through naturally occurring variations (e.g. polymorphisms), each with its own valid existence. This clone is substantially in agreement with the reference, but a complete review of all prevailing variants is recommended prior to use. [More info](#)

OTI Annotation: This clone was engineered to express the complete ORF with an expression tag. Expression varies depending on the nature of the gene.

Components: The ORF clone is ion-exchange column purified and shipped in a 2D barcoded Matrix tube containing 10ug of transfection-ready, dried plasmid DNA (reconstitute with 100 ul of water).

Reconstitution Method:

1. Centrifuge at 5,000xg for 5min.
2. Carefully open the tube and add 100ul of sterile water to dissolve the DNA.
3. Close the tube and incubate for 10 minutes at room temperature.
4. Briefly vortex the tube and then do a quick spin (less than 5000xg) to concentrate the liquid at the bottom.
5. Store the suspended plasmid at -20°C. The DNA is stable for at least one year from date of shipping when stored at -20°C.

RefSeq: [NM_080604.3](#)

RefSeq Size: 2783 bp

RefSeq ORF: 1644 bp

Locus ID: 93643

UniProt ID: [Q5JTD0](#)

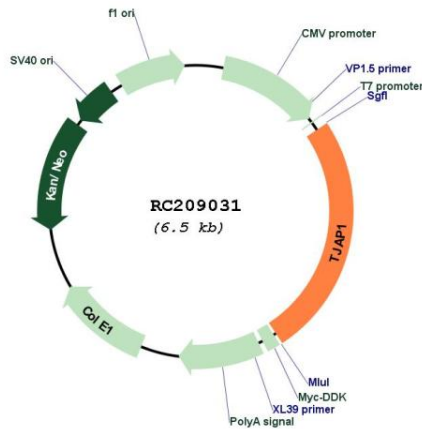
Cytogenetics: 6p21.1

Protein Pathways: Tight junction

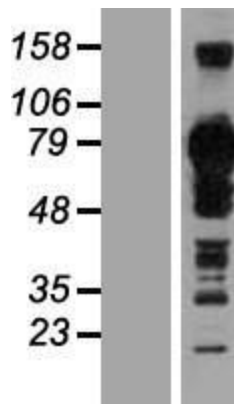
MW: 60.7 kDa

Gene Summary: This gene encodes a tight junction-associated protein. Incorporation of the encoded protein into tight junctions occurs at a late stage of formation of the junctions. The encoded protein localizes to the Golgi and may function in vesicle trafficking. Alternatively spliced transcript variants have been described. A related pseudogene exists on the X chromosome. [provided by RefSeq, Mar 2009]

Product images:



Circular map for RC209031



Western blot validation of overexpression lysate (Cat# [LY409148]) using anti-DDK antibody (Cat# [TA50011-100]). Left: Cell lysates from untransfected HEK293T cells; Right: Cell lysates from HEK293T cells transfected with RC209031 using transfection reagent MegaTran 2.0 (Cat# [TT210002]).