

Product datasheet for RC209030

FENS1 (WDFY1) (NM_020830) Human Tagged ORF Clone

Product data:

Product Type:	Expression Plasmids
Product Name:	FENS1 (WDFY1) (NM_020830) Human Tagged ORF Clone
Tag:	Myc-DDK
Symbol:	FENS1
Synonyms:	FENS-1; FENS1; WDF1; ZFYVE17
Mammalian Cell Selection:	Neomycin
Vector:	pCMV6-Entry (PS100001)
E. coli Selection:	Kanamycin (25 ug/mL)
ORF Nucleotide Sequence:	>RC209030 ORF sequence Red=Cloning site Blue=ORF Green=Tags(s)

TTTTGTAATACGACTCACTATAGGGCGGCCGGAATTCGTCGACTGGATCCGGTACCGAGGAGATCTGCC
GCC**CGATCGCC**

ATGGCGGCCGAAATCCACTCCAGGCCGAGAGCAGCCGCCGGTCTGCTGAGCAAGATCGAGGGGCACC
AGGACGCCGTCACGGCCGCGTCTCATCCCAAGGAGGACGGCGTGATCAGGCCAGCGAGGACAGAAC
CATCCGGGTATGGCTGAAAAGAGACAGTGGTCAATACTGGCCAGCATTTACCACACAATGGCCTCTCT
TGCTCTGCTATGGCTTACCATCATGACAGCAGACGGATATTTGTGGCCAGGATAATGGAGCTGTAATGG
AATTTACGTTTTCTGAAGATTTAATAAAATGAACCTTATCAAGACCTACCCAGCTCATCAGAACCAGGT
GTCTGCGATTATCTTCAGCTTGGCCACAGAGTGGGTGATCAGTACCGCCACGACAAGTGTGTGAGCTGG
ATGTGCACGCGGAGCGGGAACATGCTCGGGAGGCACTTCTTACGTCCTGGGCTTCGTGTCTGCAATATG
ACTTTGACACTCAGTATGCTTTTCGTTGGTATTCTGGGCAGATCACCTGCTGAAGCTTGAACAGAA
CACGTGTTTCAGTCATCACAACCCCAAAGGACATGAAGGTAGTGTGCGCTGCCTCTGGTGGGACCCTATT
CAGCGTTACTCTTCTCAGGAGCATCTGACAACAGCATCATCATGTGGGACATCGGAGGAAGGAAAGGCC
GGACGCTGTTACTTCAGGGCCATCATGACAAGTGCAGTCGCTGTGCTACCTTCAGCTCACCAGGCAGCT
CGTCTCCTGTTCTCGGACGGCGGAATTGCAGTGTGGAACATGGATGTTAGCAGAGAAGAGGCTCCTCAG
TGTTGGAAAGTGATTCTTGTGAGAAATGTGAGCAGCCATTTTTCTGGAACATAAAGCAGATGTGGGACA
CCAAGACGCTGGGCTAAGACAACATCACTGCAGGAAATGCGGGCAGGCTGTCTGCGGGAAGTGCAGCAG
CAAGCGCTCAAGTACCAGTCATGGGCTTCGAGTTCCAAGTCCGGGTTTGTGATTCTTGTACGACTCC
ATCAAAGATGAAGATCGGACTTCTCTAGCGACCTTTCATGAAGGAAAACATAACATTTCCACATGTCCA
TGGACATTGCCAGGGGACTGATGGTGACCTGTGGGACCGACCGCATTGTAAGATCTGGGACATGACACC
TGTGGTGGGCTGCAGTCTGGCGACTGGGTTTTCTCCGCAC

ACGCGTACGCGGCCGCTCGAGCAGAACTCATCTCAGAAGAGGATCTGGCAGCAAATGATATCCTGGATT
ACAAGGATGACGACGATAAGGTTTAA



[View online »](#)

Protein Sequence: >RC209030 protein sequence
 Red=Cloning site Green=Tags(s)

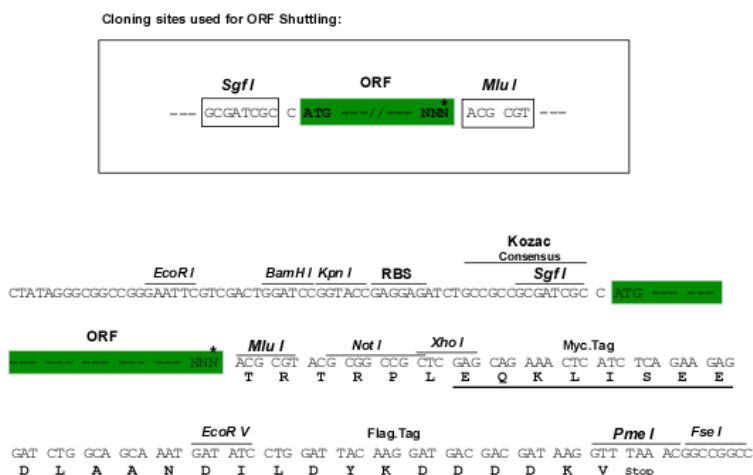
MAAEIHSRPQSSRPVLLSKIEGHQDAVTAALLIPKEDGVITASEDRIRVWLKRDSGQYWPSIYHTMASP
 CSAMAYHHDSRRIFVQDNGAVMEFHVSEDFNKMNFIKTYPAHQNRVSAIIFSLATEWVISTGHDKCVSW
 MCTRSGNMLGRHFFTSWASCLQYDFDTQYAFVGDYSGQITLLKLEQNTCSVITTLKGHEGSVAACLWWDPI
 QRLLFSGASDNSIIMWDIGGRKGRTRLLQGHHDKVSLSLQQLTRQLVSCSSDGGIAVWNMDVSREEAPQ
 WLESDSCQKCEQPFFWNIKQMWDTKTLGLRQHHCRCQAVCGKCSSKRSSYPVMGFEFQVRVCDSCYDS
 IKDEDRTSLATFHEGKHNI SHMSMDIARGLMVTCTGDRIVKIWDMPVVGCSLATGFSPH

TRTRP**LEQKLISEEDLA**ANDILDYKDDDDK**V**

Chromatograms: https://cdn.origene.com/chromatograms/mk6125_g05.zip

Restriction Sites: SgfI-MluI

Cloning Scheme:



ACCN: NM_020830

ORF Size: 1230 bp

OTI Disclaimer: The molecular sequence of this clone aligns with the gene accession number as a point of reference only. However, individual transcript sequences of the same gene can differ through naturally occurring variations (e.g. polymorphisms), each with its own valid existence. This clone is substantially in agreement with the reference, but a complete review of all prevailing variants is recommended prior to use. [More info](#)

OTI Annotation: This clone was engineered to express the complete ORF with an expression tag. Expression varies depending on the nature of the gene.

Components: The ORF clone is ion-exchange column purified and shipped in a 2D barcoded Matrix tube containing 10ug of transfection-ready, dried plasmid DNA (reconstitute with 100 ul of water).

Reconstitution Method:

1. Centrifuge at 5,000xg for 5min.
2. Carefully open the tube and add 100ul of sterile water to dissolve the DNA.
3. Close the tube and incubate for 10 minutes at room temperature.
4. Briefly vortex the tube and then do a quick spin (less than 5000xg) to concentrate the liquid at the bottom.
5. Store the suspended plasmid at -20°C. The DNA is stable for at least one year from date of shipping when stored at -20°C.

RefSeq: [NM_020830.5](#)

RefSeq Size: 4607 bp

RefSeq ORF: 1233 bp

Locus ID: 57590

UniProt ID: [Q8IWB7](#)

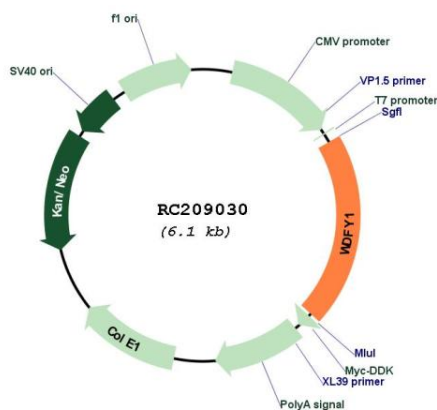
Cytogenetics: 2q36.1

Domains: FYVE, WD40

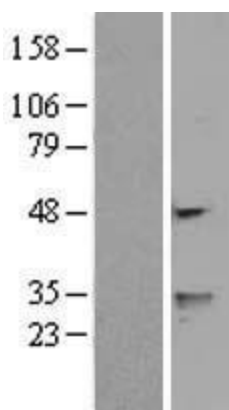
MW: 46.3 kDa

Gene Summary: The protein encoded by this gene is a phosphatidylinositol 3-phosphate binding protein, which contains a FYVE zinc finger domain and multiple WD-40 repeat domains. When exogenously expressed, it localizes to early endosomes. Mutagenesis analysis demonstrates that this endosomal localization is mediated by the FYVE domain. [provided by RefSeq, Jan 2015]

Product images:



Circular map for RC209030



Western blot validation of overexpression lysate (Cat# [LY402807]) using anti-DDK antibody (Cat# [TA50011-100]). Left: Cell lysates from untransfected HEK293T cells; Right: Cell lysates from HEK293T cells transfected with RC209030 using transfection reagent MegaTran 2.0 (Cat# [TT210002]).



Coomassie blue staining of purified WDFY1 protein (Cat# [TP309030]). The protein was produced from HEK293T cells transfected with WDFY1 cDNA clone (Cat# RC209030) using MegaTran 2.0 (Cat# [TT210002]).