

Product datasheet for **RC209028L2V**

Estrogen Related Receptor alpha (ESRRA) (NM_004451) Human Tagged ORF Clone Lentiviral Particle

Product data:

Product Type:	Lentiviral Particles
Product Name:	Estrogen Related Receptor alpha (ESRRA) (NM_004451) Human Tagged ORF Clone Lentiviral Particle
Symbol:	Estrogen Related Receptor alpha
Synonyms:	ERR1; ERRa; ERRalpha; ESRL1; NR3B1
Mammalian Cell Selection:	None
Vector:	pLenti-C-mGFP (PS100071)
Tag:	mGFP
ACCN:	NM_004451
ORF Size:	1269 bp
ORF Nucleotide Sequence:	The ORF insert of this clone is exactly the same as(RC209028).
OTI Disclaimer:	The molecular sequence of this clone aligns with the gene accession number as a point of reference only. However, individual transcript sequences of the same gene can differ through naturally occurring variations (e.g. polymorphisms), each with its own valid existence. This clone is substantially in agreement with the reference, but a complete review of all prevailing variants is recommended prior to use. More info
OTI Annotation:	This clone was engineered to express the complete ORF with an expression tag. Expression varies depending on the nature of the gene.
RefSeq:	NM_004451.4
RefSeq Size:	2284 bp
RefSeq ORF:	1272 bp
Locus ID:	2101
UniProt ID:	P11474
Cytogenetics:	11q13.1
Domains:	HOLI, zf-C4

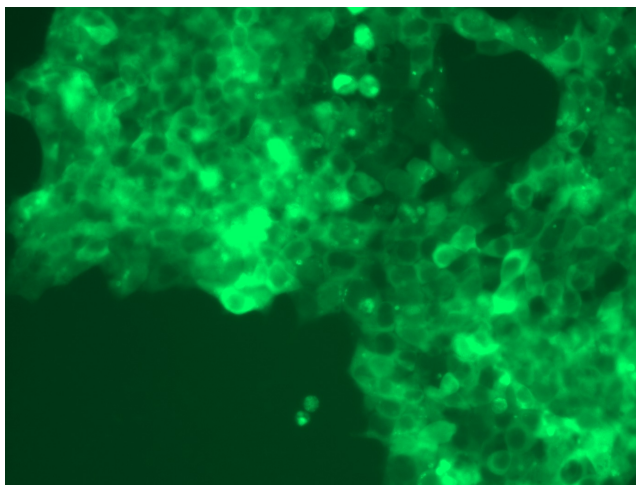

[View online »](#)

Protein Families: Druggable Genome, Nuclear Hormone Receptor, Transcription Factors

MW: 45.5 kDa

Gene Summary: The protein encoded by this gene is a nuclear receptor that is most closely related to the estrogen receptor. This protein acts as a site-specific transcription factor and interacts with members of the PGC-1 family of transcription cofactors to regulate the expression of most genes involved in cellular energy production as well as in the process of mitochondrial biogenesis. A processed pseudogene of ESRRA is located on chromosome 13q12.1. [provided by RefSeq, Jun 2019]

Product images:



[RC209028L2] was used to prepare Lentiviral particles using [TR30037] packaging kit. HEK293T cells were transduced with RC209028L2V particle to overexpress human ESRRA-mGFP fusion protein.