

Product datasheet for **RC209024**

VANGL1 (NM_138959) Human Tagged ORF Clone

Product data:

Product Type:	Expression Plasmids
Product Name:	VANGL1 (NM_138959) Human Tagged ORF Clone
Tag:	Myc-DDK
Symbol:	VANGL1
Synonyms:	KITENIN; LPP2; STB2; STBM2
Mammalian Cell Selection:	Neomycin
Vector:	pCMV6-Entry (PS100001)
E. coli Selection:	Kanamycin (25 ug/mL)



[View online »](#)

ORF Nucleotide Sequence:

>RC209024 ORF sequence
 Red=Cloning site Blue=ORF Green=Tags(s)

TTTTGTAATACGACTCACTATAGGGCGGCCGGAATTCGTCGACTGGATCCGGTACCGAGGAGATCTGCC
 GCC**GCGATCGCC**

ATGGATACCGAATCCACTTATTCTGGATATTCTTACTATTCAAGTCATTGAAAAATCTCACAGACAAG
 GGGAAAGAACTAGAGAGAGACACAAGTCACCCCGAATAAAGACGCGAGAGGGTCAGAAAAGTCTGTAC
 CATTCAACCTCCCACTGGAGAGCCCTGTTGGAAATGATTCTACTCGGACAGAGGAAGTTCAGGATGAC
 AACTGGGAGAGACCACCACGGCCATCACAGGCACCTCGGAGCACAGCATATCCAAGAGGACATTGCCA
 GGATCAGCAAGGACATGGAGGACAGCGTGGGGCTGGATTGCAAACGCTACCTGGGCTCACCGTCGCCTC
 TTTTCTTGGACTTCTAGTTTTCTCACCCCTATTGCCTTCATCCTTTACCTCCGATCCTGTGGAGGGAT
 GAGCTGGAGCCTGTGGACAATTTGTGAGGGCTCTTTATCTCCATGGCATTCAAACCTCCTATTCTGC
 TCATAGGGACCTGGGCACTTTTTCCGCAAGCGGAGAGCTGACATGCCACGGGTGTTTGTGTTTCGTGC
 CCTTTTGTGGTCTCATCTTTCTTTGTGGTTTCTATTGGCTTTTTACGGGTCCGCATTTTGGAC
 TCTCGGGACCGGAATTACCAGGGCATTGTGCAATATGCAGTCTCCCTTGTGGATGCCCTCCTCTCATCC
 ATTACCTGGCCATCGTCCTGCTGGAGCTCAGGCAGCTGCAGCCATGTTACAGCTGCAGGTGGTCCGCTC
 CACCGATGGCGAGTCCCCTTCTACAGCCTGGGACACCTGAGTATCCAGCGAGCAGCATTGGTGGTCCCTA
 GAAAATTACTACAAAGATTTACCATCTATAACCCAAACCTCCTAACAGCCTCCAAATCCGAGCAGCCA
 AGCATATGGCCGGGCTGAAAGTCTACAATGTAGATGGCCCAAGTAAACAATGCCACTGGCCAGTCCCGGGC
 CATGATTGCTGCAGCTGCTCGGCGCAGGGACTCAAGCCACAACGAGTTGTATTATGAAGAGGCCGAACAT
 GAACGGCAGTAAAGAAGCGGAAAGCAAGGCTGGTGGTGCAGTGAAGAGGCCCTTCATCCACATTACAGC
 GTCTCCAGGCTGAGGAGCAGCAGAAAGCCAGGGGAGGTGATGGACCCTAGGGAGGCCGCCAGGCCATG
 TTTCCCTCCATGGCCAGGGCTCTCAGAAGTACCTGCGCATCACCCGGCAGCAGAACTACCACAGCATG
 GAGAGCATCCTGCAGCACCTGGCCTTCTGCATACCAACGGCATGACCCCAAGGCCTTCTAGAACGGT
 ACCTCAGTGCGGGCCCCACCCTGCAATATGACAAGGACCCTGGCTCTACACAGTGGAGGCTTGTGAG
 TGATGAGGCTGTGACTAATGGATTACGGGATGGAATTGTGTTCTTAAGTGTGGACTTACGCCTC
 GTAGTCAATGTGAAGAAAATTCATTATCATACTCTCTGAAGAGTTCATAGACCCCAAATCTCACAAAT
 TTGTCCTTCGCTTACAGTCTGAGACATCCGTT

ACGCGTACGCGGCCGCTCGAGCAGAAACTCATCTCAGAAGAGGATCTGGCAGCAAATGATATCTGGATT
 ACAAGGATGACGACGATAAGGTTTAA

Protein Sequence:

>RC209024 protein sequence
 Red=Cloning site Green=Tags(s)

MDTESTYSGYSYSSSHSKKSHRQGERTRERHKSPRNKDGRGSEKSVTIQPPTGPELLGNDSTRTEEVQDD
 NWGETTTAITGTSEHSISQEDIARI SKDMEDSVGLDCKRYLGLTVASFLGLLVFLTPIAFILLPPIIWRD
 ELEPCGTICEGLFISMAFKLLILLIGTWALFFRKRADMPRVFVFRALLLVIFLFFVSYWLFYGVRIID
 SRDRNYQGIVQYAVSLVDALLFIHYLAIVLLELRQLQPMFTLQVVRSTDGESRFYSLGHLISIQRAALVVL
 ENYYKDFTIYNPNTASKFRAAKHMAGLKVYNVDGPSNNTGQSRAMIAAAARRRDSHNELYEEAEH
 ERRVKKRKARLVAVVEEAFIHIQRLQAEQKAPGEVMDPREAAQAI FPSMARALQKYLRI TRQQNYHSM
 ESILQHLAFCITNGMTPKAFLERYLSAGPTLQYDKDRWLSTQWRLVSDEAVTNGLRDGIVFVLKCLDFSL
 VVNVKKIPFIILSEEFIDPKSHKFLRLQSETSV

TRTRPLEQKLI SEEDLAANDILDYKDDDDKV

Chromatograms:

https://cdn.origene.com/chromatograms/mk6198_h09.zip

Restriction Sites:

Sgfl-Mlul

Cloning Scheme:


ACCN: NM_138959

ORF Size: 1572 bp

OTI Disclaimer: The molecular sequence of this clone aligns with the gene accession number as a point of reference only. However, individual transcript sequences of the same gene can differ through naturally occurring variations (e.g. polymorphisms), each with its own valid existence. This clone is substantially in agreement with the reference, but a complete review of all prevailing variants is recommended prior to use. [More info](#)

OTI Annotation: This clone was engineered to express the complete ORF with an expression tag. Expression varies depending on the nature of the gene.

Components: The ORF clone is ion-exchange column purified and shipped in a 2D barcoded Matrix tube containing 10ug of transfection-ready, dried plasmid DNA (reconstitute with 100 ul of water).

- Reconstitution Method:**
1. Centrifuge at 5,000xg for 5min.
 2. Carefully open the tube and add 100ul of sterile water to dissolve the DNA.
 3. Close the tube and incubate for 10 minutes at room temperature.
 4. Briefly vortex the tube and then do a quick spin (less than 5000xg) to concentrate the liquid at the bottom.
 5. Store the suspended plasmid at -20°C. The DNA is stable for at least one year from date of shipping when stored at -20°C.

RefSeq: [NM_138959.3](#)

RefSeq Size: 8691 bp

RefSeq ORF: 1575 bp

Locus ID: 81839

UniProt ID: [Q8TAA9](#)

Cytogenetics: 1p13.1

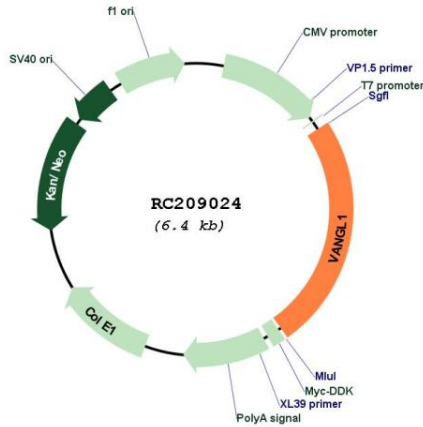
Protein Families: Transmembrane

Protein Pathways: Wnt signaling pathway

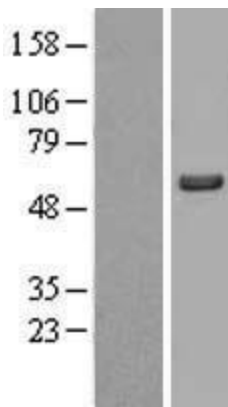
MW: 60 kDa

Gene Summary: This gene encodes a member of the tetraspanin family. The encoded protein may be involved in mediating intestinal trefoil factor induced wound healing in the intestinal mucosa. Mutations in this gene are associated with neural tube defects. Alternate splicing results in multiple transcript variants. [provided by RefSeq, Feb 2010]

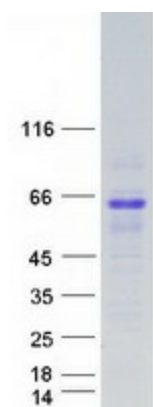
Product images:



Circular map for RC209024



Western blot validation of overexpression lysate (Cat# [LY403377]) using anti-DDK antibody (Cat# [TA50011-100]). Left: Cell lysates from untransfected HEK293T cells; Right: Cell lysates from HEK293T cells transfected with RC209024 using transfection reagent MegaTran 2.0 (Cat# [TT210002]).



Coomassie blue staining of purified VANGL1 protein (Cat# [TP309024]). The protein was produced from HEK293T cells transfected with VANGL1 cDNA clone (Cat# RC209024) using MegaTran 2.0 (Cat# [TT210002]).