

## Product datasheet for **RC209019**

### MRPL14 (NM\_032111) Human Tagged ORF Clone

#### Product data:

**Product Type:** Expression Plasmids  
**Tag:** Myc-DDK  
**Symbol:** MRPL14  
**Synonyms:** L14mt; L32mt; MRP-L14; MRP-L32; MRPL32; RMPL32; RPML32  
**Mammalian Cell Selection:** Neomycin  
**Vector:** pCMV6-Entry (PS100001)  
**E. coli Selection:** Kanamycin (25 ug/mL)

**ORF Nucleotide Sequence:** >RC209019 ORF sequence  
Red=Cloning site Blue=ORF Green=Tags(s)

TTTTGTAATACGACTCACTATAGGGCGGCCGGGAATTCGTCGACTGGATCCGGTACCGAGGAGATCTGCC  
GCCGCGATCGCC

ATGGCTTTCTTTACTGGGCTCTGGGGCCCTTCACCTGTGTAAGCAGAGTGCTGAGCCATCACTGTTTCA  
GCACCACTGGGAGTCTGAGTGCATTGAGGATGACGCGGGTACGAGTGGTGGACAACAGTGCCTGGG  
GAACAGCCCATACCATCGGGCTCCTCGCTGCATCCATGTCTATAAGAAGAAATGGAGTGGCAAGGTGGC  
GACCAGATACTACTGGCCATCAAGGGACAGAAGAAAAAGCGCTCATTGTGGGGCACTGCATGCCTGGCC  
CCCGAATGACCCCGAGATTCGACTCCAACAACGTGGTCCTCATTGAGGACAACGGGAACCCGTGGGGAC  
ACGAATTAAGACACCCATCCCCACCGCTGCGCAAGCGGGAAGCGAGTATTCCAAGTGTGGCCATT  
GCTCAGAACTTTGTG

ACGCGTACGCGGCCGCTCGAGCAGAACTCATCTCAGAAGAGGATCTGGCAGCAATGATATCCTGGATT  
ACAAGGATGACGACGATAAGGTTTAA

**Protein Sequence:** >RC209019 protein sequence  
Red=Cloning site Green=Tags(s)

MAFFTGLWGPFTCVSRVLSHHCFSTTGSLSAIQKMTRVVRVVDNSALGNSPYHRAPRCIHVYKKNVGVKVG  
DQILLAIKGGQKKKALIVGHCMGPRMTPRFDSNNVVLIEDNGNPVGTRIKTIPTSLRKRGEYSKVLAI  
AQNFI

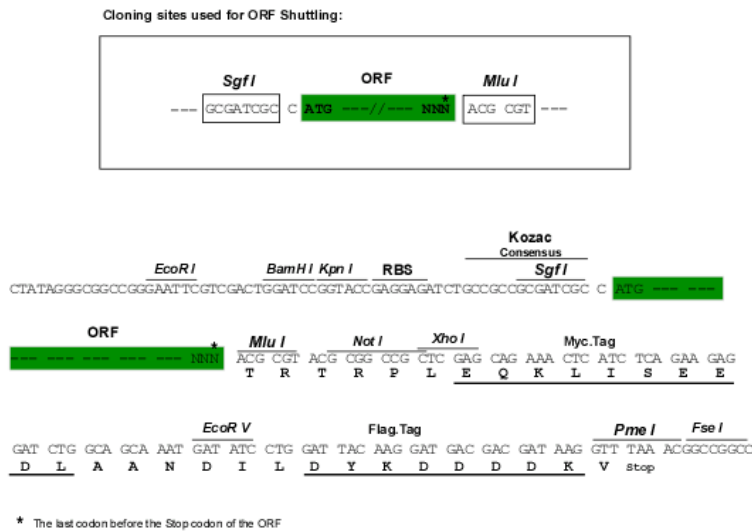
TRTRPLEQKLI SEEDLAANDILDYKDDDDKV

**Chromatograms:** [https://cdn.origene.com/chromatograms/mk6125\\_h12.zip](https://cdn.origene.com/chromatograms/mk6125_h12.zip)



**Restriction Sites:** SgfI-MluI

**Cloning Scheme:**



**ACCN:** NM\_032111

**ORF Size:** 435 bp

**OTI Disclaimer:** The molecular sequence of this clone aligns with the gene accession number as a point of reference only. However, individual transcript sequences of the same gene can differ through naturally occurring variations (e.g. polymorphisms), each with its own valid existence. This clone is substantially in agreement with the reference, but a complete review of all prevailing variants is recommended prior to use. [More info](#)

**OTI Annotation:** This clone was engineered to express the complete ORF with an expression tag. Expression varies depending on the nature of the gene.

**Components:** The ORF clone is ion-exchange column purified and shipped in a 2D barcoded Matrix tube containing 10ug of transfection-ready, dried plasmid DNA (reconstitute with 100 ul of water).

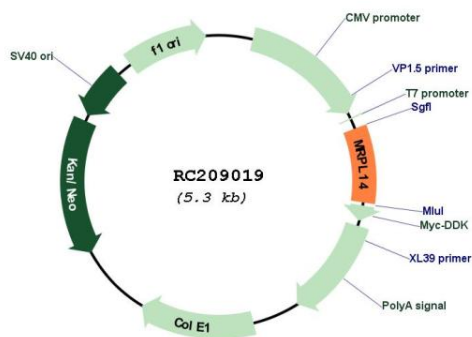
**Reconstitution Method:**

1. Centrifuge at 5,000xg for 5min.
2. Carefully open the tube and add 100ul of sterile water to dissolve the DNA.
3. Close the tube and incubate for 10 minutes at room temperature.
4. Briefly vortex the tube and then do a quick spin (less than 5000xg) to concentrate the liquid at the bottom.
5. Store the suspended plasmid at -20°C. The DNA is stable for at least one year from date of shipping when stored at -20°C.

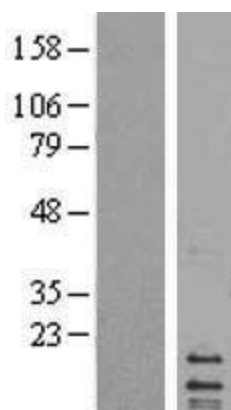
**Note:** Plasmids are not sterile. For experiments where strict sterility is required, filtration with 0.22um filter is required.

RefSeq:	<a href="#">NM_032111.4</a>
RefSeq Size:	791 bp
RefSeq ORF:	438 bp
Locus ID:	64928
UniProt ID:	<a href="#">Q6PIL8</a>
Cytogenetics:	6p21.1
Domains:	Ribosomal_L14
MW:	15.9 kDa
Gene Summary:	This nuclear gene encodes a protein component of the 39S subunit of the mitochondrial ribosome. A pseudogene of this gene is found on chromosome 17. [provided by RefSeq, Jan 2016]

### Product images:



Circular map for RC209019



Western blot validation of overexpression lysate (Cat# [LY403143]) using anti-DDK antibody (Cat# [TA50011-100]). Left: Cell lysates from un-transfected HEK293T cells; Right: Cell lysates from HEK293T cells transfected with RC209019 using transfection reagent MegaTran 2.0 (Cat# [TT210002]).