

## Product datasheet for **RC209016**

### TTC27 (NM\_017735) Human Tagged ORF Clone

#### Product data:

<b>Product Type:</b>	Expression Plasmids
<b>Tag:</b>	Myc-DDK
<b>Symbol:</b>	TTC27
<b>Mammalian Cell Selection:</b>	Neomycin
<b>Vector:</b>	pCMV6-Entry (PS100001)
<b>E. coli Selection:</b>	Kanamycin (25 ug/mL)



[View online »](#)

ORF Nucleotide Sequence: >RC209016 ORF sequence  
Red=Cloning site Blue=ORF Green=Tags(s)

TTTTGTAATACGACTCACTATAGGGCGCCGGGAATTCGTGACTGGATCCGGTACCGAGGAGATCTGCC  
GCCGCGATCGCC

ATGTGGACCCGGAGCTGGCAATTCTGAGGGGATCCCCTGAGGCTGAGCGGCAGCAATGAAACAGG  
AGGGGGTCGTGCGTTCAGAGAGTGGATCTTTCCTACAATTGCTGCTGGAAGGGAACATGAAGCCATATT  
CTTAAATTCATGACTCAAAATATTTTTAATTCACAACAACCCGCTGAAGAAAAGTTGATAGCTACCTG  
GAGAAGCAGGTAGTAACATTCCTGGATTACTCAACAGATTTGGACACAACGGAAGACAACAGTTGATAT  
TTCTACTTGGTGTGAGCAGTTTGAACCTTTTTGTTCCAGCAATTCAGTGAAGTTAAAGGACTGGATGCATTTGTT  
CCCTCAGGACTTTTTGTCACTGTTTTGTTCCAGCAATTCAGTGAAGTTAAAGGACTGGATGCATTTGTT  
CTGAGCCTGCTCACTCTAGATGGTGAATCAATCTACAGCCTGACCTCGAAGCCTATACTACTGTTATTAG  
CACGCATTATCCTAGTGAATGAAGACATAAACTGACAGCTATTCAGAGCTTGCATGGTGGACTTTGAG  
ATGTGTGAATATTCATCAGCATTGCTTGAGGAACGCTCACCTCTGCTTTTACTCTTGCCGAAAAGTGT  
ATTGATCAAGTGTGAAACTACAGAATCTGTTTGTAGATGATTGAGGTCGATATTTGGCTATTCAATTC  
ATCTGGAATGTGCATATGTGTTTTATATTATTAGTACAGAAAAGCAAAAGATCAGTTGGATATTGC  
TAAGGACATCAGCCAATTACAAATGATTTGACAGGTGCTTTGGGAAAAAGAACACGGTTCAGGAAAAT  
TATGTGGCACAACCTGATTCTAGATGAAGAAGGGAAGGGATGTCCTTTCAAATGTGAATTCACCTCAG  
CACCCACTCCTCAGGAACATTTAACCAAGAATCTTGAGCTCAATGATGACACCATTCTGAATGACATAAA  
GTTAGCAGATTGTGAACAGTTCAGATGCCGGATCTGTGTGCTGAAGAGATCGCTATTATTCTTGAATC  
TGCCTAATTTTCAAAGAATAACCCAGTGCACACATTAAGTGAAGTGGAGCTTCTGGCATTACATCAT  
GTTTGTCTTCAACAACAAAGTCTGGGCCATTGACACATCAGCCTTGATCCTCCGACAAAAGTGTGAA  
AGGAAGTACTCGCCGAGTGGAAACGGCAATGAGGCAGACACAGGCTCTTGACAGCAATTTGAAGATAAA  
ACTACATCTGTATTGGAACGCCTGAAGATTTCTATTGCTGCAAGTACCACCTCACTGGGCCATTCAGC  
GCCAATTGCAAGTTTGTCTTTGAGTTGGGATGTACCAGTTCAGCCCTCAGATATTTGAAAAGCTAGA  
AATGTGGGAAGATGTTGTCATTTGTTATGAAAGAGCCGGCAGCACGGAAGGCAGAAAGAAATCCTTAGA  
CAAGAGCTGGAGAAAAAGAAAACGCCTAGTTTATACTGCTTGGAGATGTCCTCGGAGACCATTCTT  
GCTATGACAAGGCCTGGAGTTGTCCCGGTACCGCAGTGTCTGCTGCTCAGCGCTCAAAGCCCTCCTTCA  
TCTTCGGAATAAGGAGTTTCAAGAGTGTGTAGAGTGTTCGAACGCTCGGTTAAGATTAATCCCATGCAG  
CTCGGGGTGTGGTTTTCTCGGTTGTCCTATTTGGCCTTGAAGACTATCAAGGTTGAGCAAAAGGCAT  
TTCAGCGCTGTGTGACTCTAGAACCAGATAATGCTGAAGCTTGAACAATTTGTCAACTTCTATATCCG  
ATTAACAAAAGTAAAGCTTTTAGAATTTACAAGAAGCTCTCAAGTGAAGTGAAGTGAAGCACTGGCAG  
ATTTGGGAAAACATACCTCACCAGCACTGACGTTGGGGAATTTTCAAGGCCATTAAAGCTTATCACC  
GGCTCTTGGACTTACGTGACAATAACAAGATGTTGAGTCTTAAAATCTAGTCAGGGCAGTGAATGA  
TGGGATGACTGATCGAAGTGGAGATGTTGCAACTGGCCTCAAAGGAAAGCTGCAGGAGTTATTTGGCAGA  
GTGACTTCAAGAGTGACAAATGATGGAGAAATCTGGAGGCTGTATGCCCCAGTATATGGAATGGGCAGA  
GTGAAAAGCCTGATGAAAATGAAAAGGCATTCCAGTGCCTCTCAAAGGCATACAAGTGTGACACCCAGTC  
CAATTGTTGGGAGAAAGATATTACATCATTTAAGGAAGTGTCAAAGAGCCTTAGGACTTGACATGTG  
GCCATAAAATGCAGTAAAAACAAATCCAGTTCCCAAGAAGCTGTACAAATGCTTTCTTCTGTTGACTCA  
ATTTACGGGGCTTGTATCTAAAGCAAAGCAACTTTTACAGATGTGGCAACTGGAGAAATGTCAGGGA  
ATTAGCTGATGACATAACAGCTATGGACACCTTAGTGACAGAGCTCCAAGACCTAAGCAACCAAGTTTCGA  
AATCAGTAT

ACGCGTACGCGGCCGCTCGAGCAGAACTCATCTCAGAAGAGGATCTGGCAGCAATGATATCCTGGATT  
ACAAGGATGACGACGATAAGGTTTAA

**Protein Sequence:**

>RC209016 protein sequence  
Red=Cloning site Green=Tags(s)

MWTPELAILRGFPTEAERQQWKQEGVVGSESGSFLQLLLEGNYEAIFLNSMTQNI FNSTTTAEEKIDSYL  
EKQVVTFLDYSTDLDLTTERRQQLIFLLGVSSLQLFVQSNWTGPPVDLHPQDFLSSVLFQQFSEVKGLDAFV  
LSLLTLDGESIYSLTSKPILLLLARIILVNRHKLTAIQSLPWWTLRCVNIHQHLLLEERSPLLFTLAENC  
IDQVMKLQNLVDDSGRYLAIQFHLECAVYVFLYYYEYRKAKDQLDIAKDISQLQIDL TGALGKRTRFQEN  
YVAQLILDVRRREGDVL SNCEFTPAPTQEH LTKNLEL NDDTILNDIKLADCEQFQMPDLCAEEIAIILGI  
CTNFQKNNPVHTL TEVELLAFTSCLLSQPKFWAIQTSALILRTKLEKGSTRRVERAMRQTQALADQFEDK  
TTSVLERLKI FYCCQVPPHWAIQRQLASLLFELGCTSSALQIFEKLEMWEDVVICYERAGQHGAEEILR  
QELEKKETPSLYCLLDVLDGHSYDKAWELSRYSARAQRSKALLHLRNKEFQECVECFERSVKINPMQ  
LGVWVSLGCAYL ALEDYQGSKAFQRCVTLEPDNAEAWNLSYIRLKQKVKAFRTLQEALKCNIEHWQ  
IWENYILTSTDVGEFSEAIKAYHRLDLRDKYKDVQLKILVRAVIDGMTDRSGDVATGLKGLQELFGR  
VTSRVTNDGEIWRLYAHVYNGQSEKPDENEKAFQCLSKAYKCDTQSNWEKDITSFKEVVQRALGLAHV  
AIKCSKNKSSSQEAVQMLSSVRLNLRGLLSKAKQLFTDVATGEMSRELADDITAMDTLVTELQDL SNQFR  
NQY

TRTRPLEQKLI SEEDLAANDILDYKDDDDKV

**Chromatograms:**

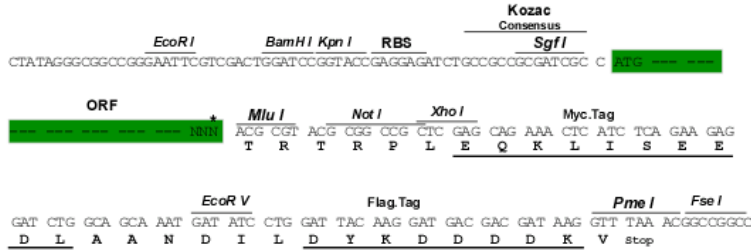
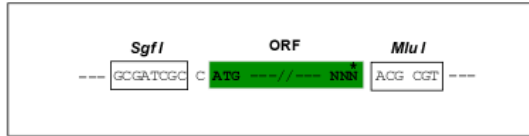
[https://cdn.origene.com/chromatograms/mk6527\\_h06.zip](https://cdn.origene.com/chromatograms/mk6527_h06.zip)

**Restriction Sites:**

Sgfl-Mlul

Cloning Scheme:

Cloning sites used for ORF Shuttling:



\* The last codon before the Stop codon of the ORF

ACCN: NM\_017735

ORF Size: 2529 bp

OTI Disclaimer: The molecular sequence of this clone aligns with the gene accession number as a point of reference only. However, individual transcript sequences of the same gene can differ through naturally occurring variations (e.g. polymorphisms), each with its own valid existence. This clone is substantially in agreement with the reference, but a complete review of all prevailing variants is recommended prior to use. [More info](#)

OTI Annotation: This clone was engineered to express the complete ORF with an expression tag. Expression varies depending on the nature of the gene.

Components: The ORF clone is ion-exchange column purified and shipped in a 2D barcoded Matrix tube containing 10ug of transfection-ready, dried plasmid DNA (reconstitute with 100 ul of water).

**Reconstitution Method:**

1. Centrifuge at 5,000xg for 5min.
2. Carefully open the tube and add 100ul of sterile water to dissolve the DNA.
3. Close the tube and incubate for 10 minutes at room temperature.
4. Briefly vortex the tube and then do a quick spin (less than 5000xg) to concentrate the liquid at the bottom.
5. Store the suspended plasmid at -20°C. The DNA is stable for at least one year from date of shipping when stored at -20°C.

**Note:** Plasmids are not sterile. For experiments where strict sterility is required, filtration with 0.22um filter is required.

**RefSeq:** [NM\\_017735.3](#), [NP\\_060205.3](#)

**RefSeq Size:** 2953 bp

**RefSeq ORF:** 2532 bp

**Locus ID:** 55622

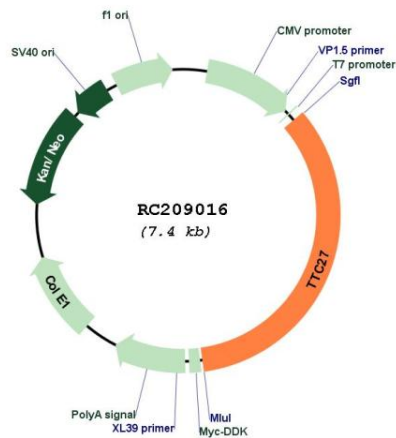
**UniProt ID:** [Q6P3X3](#)

**Cytogenetics:** 2p22.3

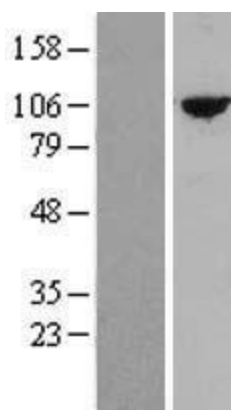
**Domains:** TPR

**MW:** 96.6 kDa

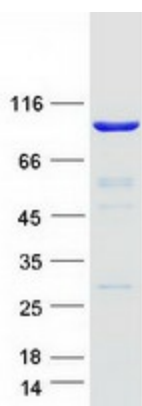
### Product images:



Circular map for RC209016



Western blot validation of overexpression lysate (Cat# [LY413586]) using anti-DDK antibody (Cat# [TA50011-100]). Left: Cell lysates from un-transfected HEK293T cells; Right: Cell lysates from HEK293T cells transfected with RC209016 using transfection reagent MegaTran 2.0 (Cat# [TT210002]).



Coomassie blue staining of purified TTC27 protein (Cat# [TP309016]). The protein was produced from HEK293T cells transfected with TTC27 cDNA clone (Cat# RC209016) using MegaTran 2.0 (Cat# [TT210002]).