

Product datasheet for **RC209013**

ZNF558 (NM_144693) Human Tagged ORF Clone

Product data:

Product Type: Expression Plasmids
Product Name: ZNF558 (NM_144693) Human Tagged ORF Clone
Tag: Myc-DDK
Symbol: ZNF558
Mammalian Cell Selection: Neomycin
Vector: pCMV6-Entry (PS100001)
E. coli Selection: Kanamycin (25 ug/mL)
ORF Nucleotide Sequence: >RC209013 ORF sequence
Red=Cloning site Blue=ORF Green=Tags(s)

TTTTGTAATACGACTCACTATAGGGCGGCCGGAATTCGTCGACTGGATCCGGTACCGAGGAGATCTGCC
GCC**CGATCGCC**

ATGGCGGCTGTCATCCTGCCCTCGACTGCTGCTCCGTCTCCCTGTTCCAGCCTCTCAGCAAAAAGGAC
ACACACAGGGCGGAGAGCTGGTTAATGAGCTCCTGACAAGCTGGTACGGGGCTTGGTAACCTTCGAGGA
TGTGGCCGTGGAGTTCACCCAGGAGGAGTGGCGTTGCTGGACCTGCCCAAAGGACACTGTACAGGGAT
GTGATGCTGGAGAACTGCAGGAACCTGGCCTCACTAGGGTGTCTGTTAATAAACCCAGTCTGATATCCC
AGTTGGAAACAAGACAAGAAGGTGGTGACAGAGGAAAGAGGAATTCACCAAGCACCTGTCCAGATTTGGA
GACTCTACTTAAAGCCAAATGGTTAACTCCTAAGAAGAATGTTTTCAGAAAAGAACAGTCTAAAGGTGTA
AAAACGGAAGAAGTCACTCGTGGAGTGAAGTCAATGAATGTAATCAGTGTTTTAAAGTCTTCAGCACGA
AATCTAACCTAACTCAGCACAAGAGAATTCATACTGGAGAAAAACCCATGACTGTAGTCAATGTGGGAA
GTCCTTCAGTAGCAGATCTTACCTTACTATTTCATAAGAGAATCCATAATGGGGAGAAACCCATGAATGC
AATCACTGTGGGAAAGCATTAGTATCCCTCATCCCTTAGACTGCATTTGAGAATTCACACTGGAGAAA
AACCCATGAATGTAACCAAGTGTTCACGTTTTCCGCACCAGTGTAACTCAAAGCCACAAGAGGAT
TCACACGGGGGAGAATCACCATGAATGTAATCAGTGTGGAAAAGCTTTCAGCACAAGTCTCTCTCACT
GGGCACAATAGCATTACACAGGGGAGAAACCTTATGAATGTCAGATTGTGGGAAAACCTTCAGGAAGA
GCTCCTATCTGACACAGCACGTAAAGAACTCATACTGGAGAAAAACCCATGAATGTAACGAGTGTGGGAA
ATCCTTCAGCAGTAGCTTTCTTACTGTGCACAAGAGAATACATACCGGAGAGAAACCCATACGAGTGC
AGTACTGTGGAAAAGCCTTTAATAATCTCTCAGCTGTGAAGAAACACTTAAAGAACTCACACTGGAGAAA
AACCCATGAATGTAATCATTGTGGGAAATCCTTCACAAGTAACTCTATCTTTCTGTGCACAAGAGAAT
ACATAATAGATGGATA

ACGCGTACGCGGCCGCTCGAGCAGAACTCATCTCAGAAGAGGATCTGGCAGCAATGATATCCTGGATT
ACAAGGATGACGACGATAAGGTTTAA



Protein Sequence: >RC209013 protein sequence
Red=Cloning site Green=Tags(s)

MAAVILPSTAAPSSLFPASQQKGHTQGGLVNELLT SWLRGLVTFEDVAVEFTQEEWALLDPAQRTLYRD
 VMLENCRNLASLGCRVKNKPSLISQLEQDKKVVTEERGILPSTCPDLETLKAKWLPKKNVFRKEQSKGV
 KTERSHRGGVKNLNECNQCFKVFSTKSNLTQHKRIHTGEKPYDCSQCGKSFSSRSYLTIIHKRIHNGEKPYEC
 NHCGKAFSDPSSLRLHLRIHTGEKPYECNQCFHFVVRTSCNLKSHKRIHTGENHHECNQCGKAFSTRSST
 GHNSIHTGEKPYECHDCGKTFRKSSYLTQHVRTHTGEKPYECNECGKSFSSFSSTVHKRIHTGEKPYEC
 SDCGKAFNNLSAVKKHLRTHHTGEKPYECNHCGKSFTSNSYLSVHKRIHNRWI

TRTRPLEQKLISEEDLAANDILDYKDDDDKV

Chromatograms: https://cdn.origene.com/chromatograms/mk6126_a11.zip

Restriction Sites: Sgfl-MluI

Cloning Scheme:

Cloning sites used for ORF Shuttling:



* The last codon before the Stop codon of the ORF

ACCN: NM_144693

ORF Size: 1206 bp

OTI Disclaimer: The molecular sequence of this clone aligns with the gene accession number as a point of reference only. However, individual transcript sequences of the same gene can differ through naturally occurring variations (e.g. polymorphisms), each with its own valid existence. This clone is substantially in agreement with the reference, but a complete review of all prevailing variants is recommended prior to use. [More info](#)

OTI Annotation: This clone was engineered to express the complete ORF with an expression tag. Expression varies depending on the nature of the gene.

Components: The ORF clone is ion-exchange column purified and shipped in a 2D barcoded Matrix tube containing 10ug of transfection-ready, dried plasmid DNA (reconstitute with 100 ul of water).

Reconstitution Method:

1. Centrifuge at 5,000xg for 5min.
2. Carefully open the tube and add 100ul of sterile water to dissolve the DNA.
3. Close the tube and incubate for 10 minutes at room temperature.
4. Briefly vortex the tube and then do a quick spin (less than 5000xg) to concentrate the liquid at the bottom.
5. Store the suspended plasmid at -20°C. The DNA is stable for at least one year from date of shipping when stored at -20°C.

RefSeq: [NM_144693.3](#)

RefSeq Size: 3014 bp

RefSeq ORF: 1209 bp

Locus ID: 148156

UniProt ID: [Q96NG5](#)

Cytogenetics: 19p13.2

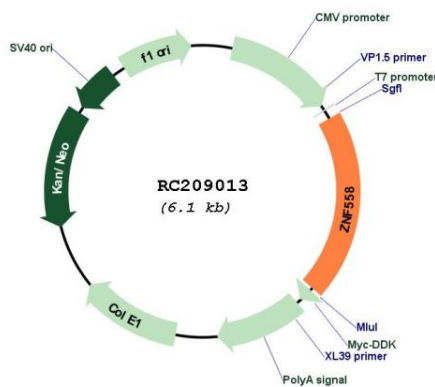
Domains: KRAB, zf-C2H2

Protein Families: Transcription Factors

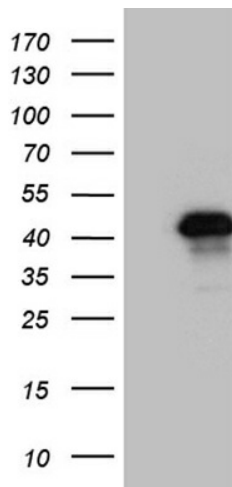
MW: 45.8 kDa

Gene Summary: May be involved in transcriptional regulation.[UniProtKB/Swiss-Prot Function]

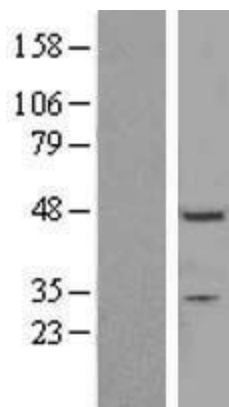
Product images:



Circular map for RC209013



HEK293T cells were transfected with the pCMV6-ENTRY control (Cat# [PS100001], Left lane) or pCMV6-ENTRY ZNF558 (Cat# RC209013, Right lane) cDNA for 48 hrs and lysed. Equivalent amounts of cell lysates (5 ug per lane) were separated by SDS-PAGE and immunoblotted with anti-ZNF558 (Cat# [TA811169])(1:2000). Positive lysates [LY403403] (100ug) and [LC403403] (20ug) can be purchased separately from OriGene.



Western blot validation of overexpression lysate (Cat# [LY403403]) using anti-DDK antibody (Cat# [TA50011-100]). Left: Cell lysates from untransfected HEK293T cells; Right: Cell lysates from HEK293T cells transfected with RC209013 using transfection reagent MegaTran 2.0 (Cat# [TT210002]).