

## Product datasheet for RC209011

### DSCR9 (NM\_148675) Human Tagged ORF Clone

#### Product data:

Product Type:	Expression Plasmids
Tag:	Myc-DDK
Symbol:	DSCR9
Synonyms:	NCRNA00038
Mammalian Cell Selection:	Neomycin
Vector:	pCMV6-Entry (PS100001)
E. coli Selection:	Kanamycin (25 ug/mL)

**ORF Nucleotide Sequence:** >RC209011 representing NM\_148675  
Red=Cloning site Blue=ORF Green=Tags(s)

TTTTGTAATACGACTCACTATAGGGCGGCCGGGAATTCGTCGACTGGATCCGGTACCGAGGAGATCTGCC  
GCCGCGATCGCC

ATGGGCAGGATTTGCCCGTGAACCCCGCGCACGCAGGCTCCGCGGAGGCCCGGGCGCCCGAGCGGGC  
ATTCCTCCCTATCACCAGCTCCAGGGTGGTCCCCCGGCTGTGGAGCCCAGACCCCGGCCGTCCAGC  
AGCGTATAGACGAGCCCATGTCTGCGATGTAACCTGCACCGCGCTGGGATCCACCTCCCGCCAGGGTGAG  
GGCGCGTCTCCAGCGTATGCTAGGCAGGCGCCCGCCCTCTGGTCACGTGACCACGCCTACAGCC  
GAAGAGGATGGGAAAATGCGGCCCTGTTCCTGAACAGGAAGCGGAAGCAGGAAGGAACTGAGAACCAG  
CATCTGCTGCCCGCTGAATCAGCGTTAGCATGTGGAGGCAACCTCAGCCCCAGTTTTTTGAAGAAGGTG  
ATTCAGATTCAGACACAGGAATTATGG

ACGCGTACGCGGCCGCTCGAGCAGAACTCATCTCAGAAGAGGATCTGGCAGCAAAATGATATCCTGGATT  
ACAAGGATGACGACGATAAGGTTTAA

**Protein Sequence:** >RC209011 representing NM\_148675  
Red=Cloning site Green=Tags(s)

MGRICPVNSRARRLRARPRPSGDSLPHYQLQGGAPRLWSPDPGRPAAYRRAHVCDVTAPRWGSTRQGE  
GAVLQRMLGRRAPPSWSRDHAYSRRGWENAALFLNRKRKQEGTENTSICCRPESALACGGNLSQFLKKV  
IQIQTELW

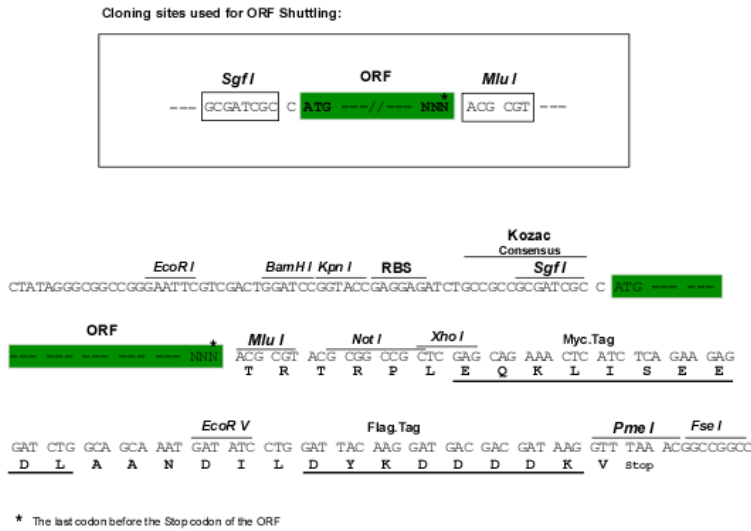
TRTRPLEQKLISEEDLAANDILDYKDDDDKV

**Chromatograms:** [https://cdn.origene.com/chromatograms/mk6356\\_h11.zip](https://cdn.origene.com/chromatograms/mk6356_h11.zip)



**Restriction Sites:** SgfI-MluI

**Cloning Scheme:**



**ACCN:** NM\_148675

**ORF Size:** 447 bp

**OTI Disclaimer:** The molecular sequence of this clone aligns with the gene accession number as a point of reference only. However, individual transcript sequences of the same gene can differ through naturally occurring variations (e.g. polymorphisms), each with its own valid existence. This clone is substantially in agreement with the reference, but a complete review of all prevailing variants is recommended prior to use. [More info](#)

**OTI Annotation:** This clone was engineered to express the complete ORF with an expression tag. Expression varies depending on the nature of the gene.

**Components:** The ORF clone is ion-exchange column purified and shipped in a 2D barcoded Matrix tube containing 10ug of transfection-ready, dried plasmid DNA (reconstitute with 100 ul of water).

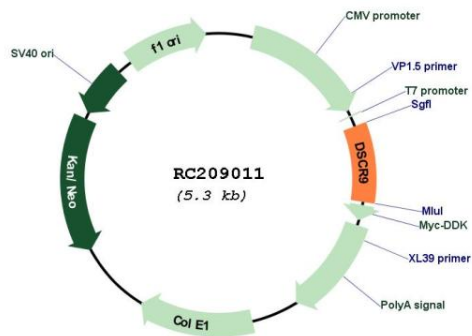
**Reconstitution Method:**

1. Centrifuge at 5,000xg for 5min.
2. Carefully open the tube and add 100ul of sterile water to dissolve the DNA.
3. Close the tube and incubate for 10 minutes at room temperature.
4. Briefly vortex the tube and then do a quick spin (less than 5000xg) to concentrate the liquid at the bottom.
5. Store the suspended plasmid at -20°C. The DNA is stable for at least one year from date of shipping when stored at -20°C.

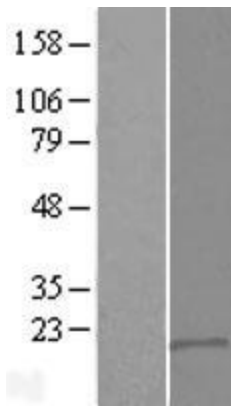
**Note:** Plasmids are not sterile. For experiments where strict sterility is required, filtration with 0.22um filter is required.

RefSeq:	<u>NM_148675.3</u>
RefSeq Size:	1681 bp
RefSeq ORF:	449 bp
Locus ID:	257203
Cytogenetics:	21q22.13
MW:	17.2 kDa

**Product images:**



Circular map for RC209011



Western blot validation of overexpression lysate (Cat# [LY407747]) using anti-DDK antibody (Cat# [TA50011-100]). Left: Cell lysates from un-transfected HEK293T cells; Right: Cell lysates from HEK293T cells transfected with RC209011 using transfection reagent MegaTran 2.0 (Cat# [TT210002]).