

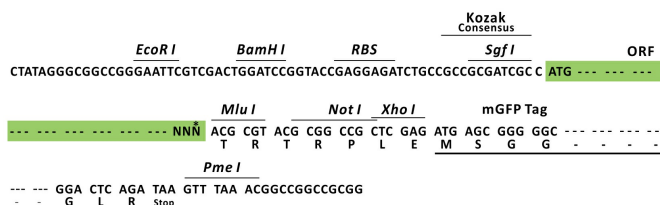
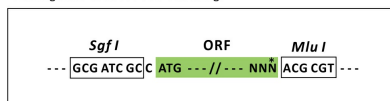
Product datasheet for RC209004L2

Coiled coil domain containing protein 111 (PRIMPOL) (NM_152683) Human Tagged Lenti ORF Clone

Product data:

Product Type:	Expression Plasmids
Product Name:	Coiled coil domain containing protein 111 (PRIMPOL) (NM_152683) Human Tagged Lenti ORF Clone
Tag:	mGFP
Symbol:	Coiled coil domain containing protein 111
Synonyms:	CCDC111; MYP22; Primpol1
Mammalian Cell Selection:	None
Vector:	pLenti-C-mGFP (PS100071)
E. coli Selection:	Chloramphenicol (34 ug/mL)
ORF Nucleotide Sequence:	The ORF insert of this clone is exactly the same as(RC209004).
Restriction Sites:	SgfI-MluI
Cloning Scheme:	

Cloning sites used for ORF Shuttling:



* The last codon before the Stop codon of the ORF.

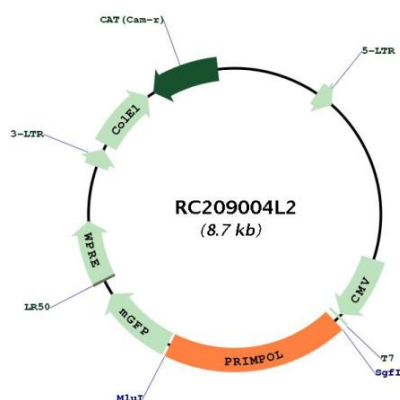
ACCN: NM_152683



[View online »](#)

ORF Size:	1680 bp
OTI Disclaimer:	The molecular sequence of this clone aligns with the gene accession number as a point of reference only. However, individual transcript sequences of the same gene can differ through naturally occurring variations (e.g. polymorphisms), each with its own valid existence. This clone is substantially in agreement with the reference, but a complete review of all prevailing variants is recommended prior to use. More info
OTI Annotation:	This clone was engineered to express the complete ORF with an expression tag. Expression varies depending on the nature of the gene.
Components:	The ORF clone is ion-exchange column purified and shipped in a 2D barcoded Matrix tube containing 10ug of transfection-ready, dried plasmid DNA (reconstitute with 100 ul of water).
Reconstitution Method:	<ol style="list-style-type: none"> 1. Centrifuge at 5,000xg for 5min. 2. Carefully open the tube and add 100ul of sterile water to dissolve the DNA. 3. Close the tube and incubate for 10 minutes at room temperature. 4. Briefly vortex the tube and then do a quick spin (less than 5000xg) to concentrate the liquid at the bottom. 5. Store the suspended plasmid at -20°C. The DNA is stable for at least one year from date of shipping when stored at -20°C.
RefSeq:	NM_152683.1
RefSeq Size:	2311 bp
RefSeq ORF:	1683 bp
Locus ID:	201973
UniProt ID:	Q96LW4
Cytogenetics:	4q35.1
MW:	64.4 kDa
Gene Summary:	This gene encodes a DNA primase-polymerase that belongs to a superfamily of archaeo-eukaryotic primases. Members of this family have primase activity, catalyzing the synthesis of short RNA primers that serve as starting points for DNA synthesis, as well as DNA polymerase activity. The encoded protein facilitates DNA damage tolerance by mediating uninterrupted fork progression after UV irradiation and reinitiating DNA synthesis. An allelic variant in this gene is associated with myopia 22. Alternative splicing results in multiple transcript variants. [provided by RefSeq, Sep 2016]

Product images:



Circular map for RC209004L2