

Product datasheet for **RC209002**

PATL1 (NM_152716) Human Tagged ORF Clone

Product data:

Product Type:	Expression Plasmids
Product Name:	PATL1 (NM_152716) Human Tagged ORF Clone
Tag:	Myc-DDK
Symbol:	PATL1
Synonyms:	hPat1b; Pat1b
Mammalian Cell Selection:	Neomycin
Vector:	pCMV6-Entry (PS100001)
E. coli Selection:	Kanamycin (25 ug/mL)



[View online »](#)

ORF Nucleotide Sequence:

>RC209002 ORF sequence
 Red=Cloning site Blue=ORF Green=Tags(s)

TTTTGTAATACGACTCACTATAGGGCGGCCGGGAATTCGTCGACTGGATCCGGTACCGAGGAGATCTGCC
 GCC**CGCATCGCC**

ATGCCTACAGTGTCTGTATTAGAATATGCTTTGCCTCAGAGGCCCCCCAGGGTCCAGAAGATGATCGGG
 ACCTTTCTGAACGAGCATTACCAAGCGGTCAACTTCACCTATCATTGGCAGTCCTCTGTAGAGCTGT
 CCCCATAGGCACCCACCTAAACAGATGGCTGTACCCAGCTTCACCCAACAGATTCTGTGTCCGAAGCCT
 GTCATGTTTCGGCCCCAATGCCACCTCGTTATCCTGCTCCCTATGGTGAGAGGATGTCTCCAAACCAGC
 TCTGCAGTGTCCCGAACTCTCCCTCCTGGGTACCCCTTTCTCCTAGTGTCTCCTGTTCTCAGCCC
 CCTCCAGAGAGCACAGCTTCTGGAGGAGCACAGCTACAGCCTGGACGGATGTCTCCAGCCAGTTTGCA
 CGGGTCCCTGGATTTGTTGGTAGTCCACTTGTGCCATGAATCCCAAGTGTCTACAAGGGCGAGTTGGGC
 AGATGCTTCCCCAGCACCAGGCTTCCGTGCCTCTTTAGTGTCCACCCTCCGCTACACCACCTCCACA
 GCAGCACCTCCTGGCCCAGGACCCACCTGCAAAACCTAAGATCTCAGGCCCAATGTTTAGACCGGAC
 ACAACTCACTCCATCCACAGCACCGTCGACTCTTGCATCAGAGACAGCAACAGAATAGAAGTCAGCATC
 GGAATCTCAATGGTGCGGGAGATAGAGGAAGTCAACGGAGCAGTCATCAAGATCATCTCCGAAAGGATCC
 ATATGCCAATCTCATGTTGCAGCGGAAAAGGATTGGGTCTCTAAAATCCAGATGATGCAACTGCAAAGC
 ACTGATCCCTACCTGGATGATTTTTATTACCAGAATTACTTTGAAAACTGGAGAAAAGTGTGAGTGTCTG
 AAGAAATACAAGGTGATGGCCCTAAGAAGGAGCGCACCAAGCTTATCACCCCTCAGGTGGCCAACTGGA
 GCACGCCTATAAGCCAGTGCAATTTGAGGGCTCTTTGGAAAGCTTACCGTTTCTAGTGTGAATAATCCC
 CGAAAAATGATTGATGCTGTTGTGACATCTCGGAGTGAGGATGATGAGACAAAAGAAAAACAAGTTCGAG
 ACAAGAGGAGAAAAACCCCTTGTATAATTGAGAAAACCTACAGCTTACTCCTTGATGTGGAGGATATGA
 AAGACGTTATCTCCTAAGTCTGGAAGAAGAGCGACCTGCCTAATGGATGACAGAAAGCACAAAATTTGT
 AGCATGTATGACAACTTAAGGGGAAAATTGCCTGGACAAGAGAGGCCCTAGTGTGACCACCTTTGTACAGA
 TCATGTGTATCCGAAAAGGGAAGAGAATGGTTGCCCGTATTCTTCTTTCTCTCCACAGAGCAAGCAGC
 TGACATTCTCATGACAACAGCCAGGAACCTCCCTTTCTTATCAAGAAGGATGCACAAGATGAGGTGCTG
 CCATGCTTACTGAGTCCCTTCTCTCTCTCTCTATCATCTTCCATCAGTGAGTATCACCAGCCTTTTGC
 GACAGCTAATGAACCTACCTCAAAGTGCAGCTACACCAGCACTCTCCAATCCTCACCTCACTGCTGTGCT
 CCAGAACAAGTTTGGCCTGTCACTGCTCCTCATCTCCTGAGCCGTGGTGAAGACCTACAGAGTTCAGAC
 CCTGCTACAGAATCAACACAAAATAATCAGTGGACGGAGGTGATGTTTATGGCAACACGAGAAGTCTGTC
 GGATCCCAAGCAGCCCTGGCCAAGCCAATCTCTATACCTACAAACCTAGTGTCCCTCTTTCTCGCTA
 TGTTGACCGCGAGAAAAGTGAAGTGTGAGGACAAAAGTGCAGCTAGTTCAGGGGATACGA

ACGCGTACGCGGCCGCTCGAGCAGAAAAGTCACTCTCAGAAGAGGATCTGGCAGCAAATGATATCCTGGATT
 ACAAGGATGACGACGATAAGGTTTAA

Protein Sequence:

>RC209002 protein sequence
 Red=Cloning site Green=Tags(s)

MPTVSVLEYALPQRPPQGPEDDRDLSERALPRRSTSPIIGSPPVRAVPIGTPPKQMAVPSFTQQILCPKP
 VHVRPPMPPRYAPYGERMSPNQLCSVPNSLLGHPFPPSVVPLSPLQRAQLLGAQLQPRMSPSQFA
 RVPGFVGSPLAAMNPKLLQGRVQMLPPAPGFRAFFSAPPSATPPPQHPGPHLQNLRSQAPMFRPD
 TTHLHPQHRLLHQRRQQNRSQHRNLNGAGDRGSHRSSHQDHLRKDPYANLMLQREKDWVSKIQMMQLQS
 TDPYLDFFYYQNYFEKLEKLSAAEEIQDGPCKERTKLIPTQVAKLEHAYKPVQFEGSLGKLTVSSVNNP
 RKMIDAVVTSRSEDETKEKQVRDKRRKTLVIEKTYSLLLDVEDYERRYLLSLEERPALMDDRKHKIC
 SMYDNLRGKLPQERPSDDHFVQIMCIRKGRMVARILPFLSTEQAADILMTTARNLPFLIKKDAQDEVL
 PCLLSPFSLLLYHLPSVITSLLRQLMNLQSAATPALSNPHLTAVLQNKFGLSLLLILLSRGEDLQSSD
 PATESTQNNQWTEVMFMATRELLRIPQAALAKPISIPTNLVSLFSRYVDRQKLNLLLETKLQLVQGIR

TRTRPLEQKLISEEDLAANDILDYKDDDDKV

Chromatograms: https://cdn.origene.com/chromatograms/mk6671_g12.zip

Restriction Sites: SgfI-MluI

Cloning Scheme:



ACCN: NM_152716

ORF Size: 1881 bp

OTI Disclaimer: The molecular sequence of this clone aligns with the gene accession number as a point of reference only. However, individual transcript sequences of the same gene can differ through naturally occurring variations (e.g. polymorphisms), each with its own valid existence. This clone is substantially in agreement with the reference, but a complete review of all prevailing variants is recommended prior to use. [More info](#)

OTI Annotation: This clone was engineered to express the complete ORF with an expression tag. Expression varies depending on the nature of the gene.

Components: The ORF clone is ion-exchange column purified and shipped in a 2D barcoded Matrix tube containing 10ug of transfection-ready, dried plasmid DNA (reconstitute with 100 ul of water).

Reconstitution Method:

1. Centrifuge at 5,000xg for 5min.
2. Carefully open the tube and add 100ul of sterile water to dissolve the DNA.
3. Close the tube and incubate for 10 minutes at room temperature.
4. Briefly vortex the tube and then do a quick spin (less than 5000xg) to concentrate the liquid at the bottom.
5. Store the suspended plasmid at -20°C. The DNA is stable for at least one year from date of shipping when stored at -20°C.

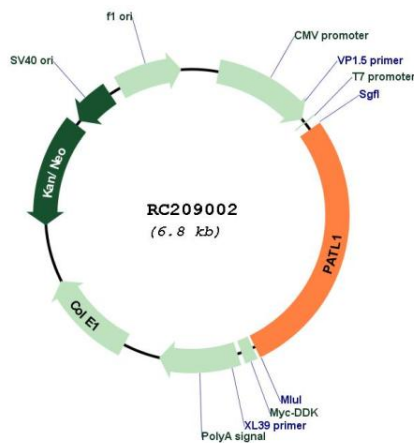
RefSeq: [NM_152716.1](#), [NP_689929.1](#)

RefSeq Size: 4142 bp

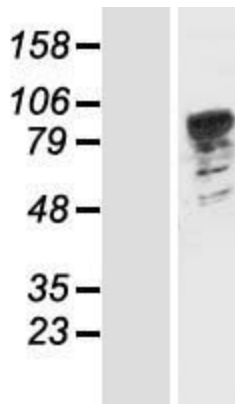
RefSeq ORF: 2313 bp

Locus ID: 219988
UniProt ID: [Q86TB9](#)
Cytogenetics: 11q12.1
Protein Pathways: RNA degradation
MW: 70.6 kDa
Gene Summary: RNA-binding protein involved in deadenylation-dependent decapping of mRNAs, leading to the degradation of mRNAs. Acts as a scaffold protein that connects deadenylation and decapping machinery. Required for cytoplasmic mRNA processing body (P-body) assembly. In case of infection, required for translation and replication of hepatitis C virus (HCV). [UniProtKB/Swiss-Prot Function]

Product images:



Circular map for RC209002



Western blot validation of overexpression lysate (Cat# [LY407336]) using anti-DDK antibody (Cat# [TA50011-100]). Left: Cell lysates from untransfected HEK293T cells; Right: Cell lysates from HEK293T cells transfected with RC209002 using transfection reagent MegaTran 2.0 (Cat# [TT210002]).