

Product datasheet for **RC208993**

JMJD6 (NM_015167) Human Tagged ORF Clone

Product data:

Product Type:	Expression Plasmids
Product Name:	JMJD6 (NM_015167) Human Tagged ORF Clone
Tag:	Myc-DDK
Symbol:	JMJD6
Synonyms:	PSR; PTDSR; PTDSR1
Vector:	pCMV6-Entry (PS100001)
E. coli Selection:	Kanamycin (25 ug/mL)
Cell Selection:	Neomycin
ORF Nucleotide Sequence:	>RC208993 ORF sequence Red=Cloning site Blue=ORF Green=Tags(s)

TTTTGTAATACGACTCACTATAGGGCGCCGGAATTCGTCGACTGGATCCGGTACCGAGGAGATCTGCC
GCC**CGGATCGCC**

ATGAACCACAAGAGCAAGAAGCGCATCCGCGAGGCCAAGCGGAGTGCGCGGCCGGAGCTCAAGGACTCGC
TGGATTGGACCCGGCACAACTACTACGAGAGCTTCTCGCTGAGCCCGCGGCCGTGGCGGATAACGTGGA
AAGGGCAGATGCTTTACAGCTGTCTGTGGAAGAATTTGTGGAGCGGTATGAAAGACCTTACAAGCCCGTG
GTTTTGTTGAATGCGCAAGAGGGCTGGTCTGCGCAGGAGAAATGGACTCTGGAGCGCCTAAAAGGAAAT
ATCGGAACCAGAAGTTCAAGTGTGGTGAGGATAACGATGGCTACTCAGTGAAGATGAAGATGAAATACTA
CATCGAGTACATGGAGAGCACTCGAGATGATAGTCCCCTTTACATCTTTGACAGCAGCTATGGTGAACAC
CCTAAAAGAAGGAACTTTTGAAGACTACAAGGTGCCAAAGTTTTTCACTGATGACCTTTTCCAGTATG
CTGGGGAGAAGCGCAGGCCCCCTTACAGGTGGTTTGTGATGGGGCCACCACGCTCCGGAAGTGGGATTCA
CATCGACCCTCTGGGAACCAGTGCCTGGAATGCCTTAGTTCAGGGCCACAAGCGCTGGTGCCTGTTTCT
ACCAGCACTCCCAGGGAACATCAAAGTGACCCGAGACGAAGGAGGGAACCAGCAAGACGAAGCTATTA
CCTGGTTTAAATGTTATTTATCCCCGGACACAGCTTCCAACCTGGCCACCTGAATTCAAACCCCTGGAAAT
CTTACAAAACCAGGAGAGACTGTCTTTGTACCAGGAGGCTGGTGGCATGTTGTCCTCAATCTCGACACT
ACTATCGCCATCACCCAAAATTTTGCCAGCAGCACCAACTTCCCTGTGGTATGGCACAAGACGGTAAGAG
GGAGACCAAAGTTATCAAGGAAATGGTATAGGATTTTGAAGCAAGAGCACCCCGAGTTGGCAGTCTCGC
AGACTCGGTTGACCTTACAGGAGTCCACAGGGATAGCTTCCGACAGCTCCAGCGACTCTTCCAGCTCCTCC
AGCTCCAGTTCGTGAGACTCCGACTCAGAGTGCAGTCTGGATCCGAGGGCGATGGGACAGTGCACCCGA
GGAAGAAGAGGAGGACGTGCAGCATGGTGGAAACGGGGACACCCTCCAGGACGACTGTGTCAGCAA
AGAGCGCAGCTCCTCCAGG

ACGCGTACGCGGCCGCTCGAGCAGAAACTCATCTCAGAAGAGGATCTGGCAGCAAATGATATCCTGGATT
ACAAGGATGACGACGATAAGGTTTAA



[View online »](#)

Protein Sequence: >RC208993 protein sequence
Red=Cloning site Green=Tags(s)

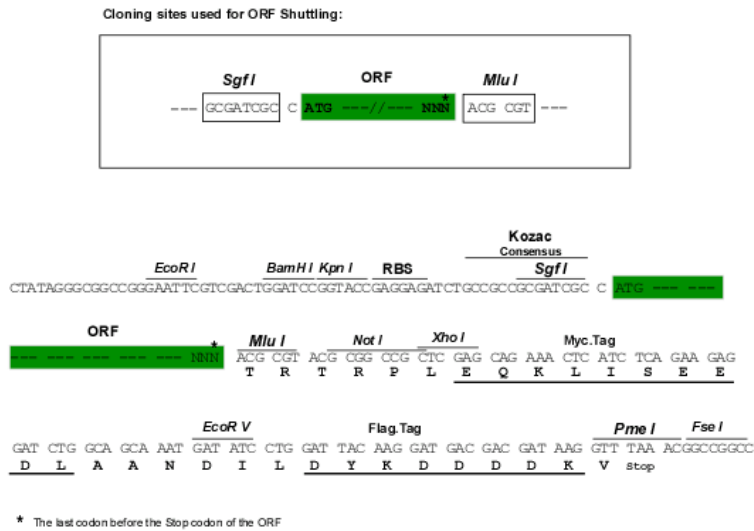
MNHKSKKRIREAKRSARPELKDSLWTRHNYYESFSLSPAADVADNVERADALQLSVEEFVERYERPYKPV
 VLLNAQEGWSAQEKWTLERLKRKYRNQKFKCGEDNDGYSVKMKMKYYIEYMESTRDDSPLYIFDSSYGEH
 PKRRKLLLEDYKVPKFFTDLLFQYAGEKRRPPYRWFVMGPPRSGTGIHIDPLGTSAWNALVQGHKRWCLFP
 TSTPRELIKVTRDEGNGQDEAITWFNVIYPRTQLPTWPPEFKPLEILQKPGETVFPVGGWWHVVLNLDL
 TIAITQNFASSTNFPVVWHKTVRGRPKLSRKWYRILKQHEPELAVLADSVDLQESTGIASDSSSDSSSSSS
 SSSSDSDSECESGSEGDTVHRRKRRTCSMVGNGDTSQDDCVSKERSSSR

TRTRPLEQKLISEEDLAANDILDYKDDDDKV

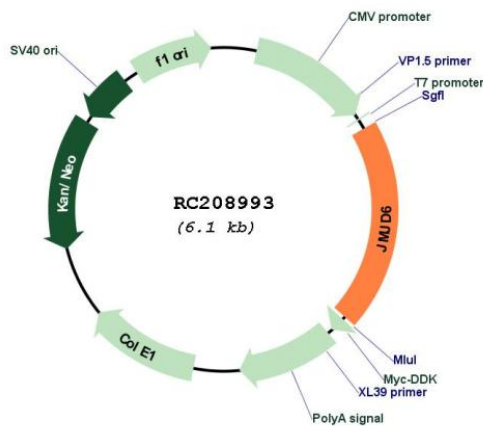
Chromatograms: https://cdn.origene.com/chromatograms/mk6356_g09.zip

Restriction Sites: SgfI-MluI

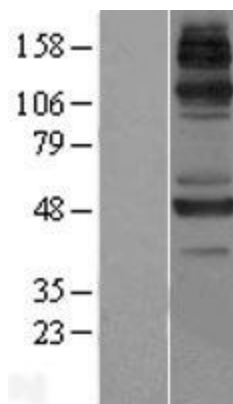
Cloning Scheme:



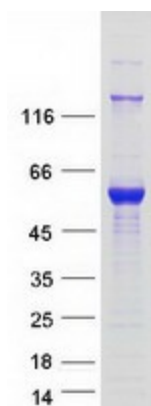
Plasmid Map:



ACCN:	NM_015167
ORF Size:	1209 bp
OTI Disclaimer:	The molecular sequence of this clone aligns with the gene accession number as a point of reference only. However, individual transcript sequences of the same gene can differ through naturally occurring variations (e.g. polymorphisms), each with its own valid existence. This clone is substantially in agreement with the reference, but a complete review of all prevailing variants is recommended prior to use. More info
OTI Annotation:	This clone was engineered to express the complete ORF with an expression tag. Expression varies depending on the nature of the gene.
Components:	The ORF clone is ion-exchange column purified and shipped in a 2D barcoded Matrix tube containing 10ug of transfection-ready, dried plasmid DNA (reconstitute with 100 ul of water).
Reconstitution Method:	<ol style="list-style-type: none">1. Centrifuge at 5,000xg for 5min.2. Carefully open the tube and add 100ul of sterile water to dissolve the DNA.3. Close the tube and incubate for 10 minutes at room temperature.4. Briefly vortex the tube and then do a quick spin (less than 5000xg) to concentrate the liquid at the bottom.5. Store the suspended plasmid at -20°C. The DNA is stable for at least one year from date of shipping when stored at -20°C.
RefSeq:	NM_015167.3
RefSeq Size:	1834 bp
RefSeq ORF:	1212 bp
Locus ID:	23210
UniProt ID:	Q6NYC1
Cytogenetics:	17q25.1
Domains:	JmjC
Protein Families:	Druggable Genome, ES Cell Differentiation/IPS
MW:	46.5 kDa
Gene Summary:	This gene encodes a nuclear protein with a JmjC domain. JmjC domain-containing proteins are predicted to function as protein hydroxylases or histone demethylases. This protein was first identified as a putative phosphatidylserine receptor involved in phagocytosis of apoptotic cells; however, subsequent studies have indicated that it does not directly function in the clearance of apoptotic cells, and questioned whether it is a true phosphatidylserine receptor. Multiple transcript variants encoding different isoforms have been found for this gene. [provided by RefSeq, Jul 2008]

Product images:

Western blot validation of overexpression lysate (Cat# [LY414758]) using anti-DDK antibody (Cat# [TA50011-100]). Left: Cell lysates from untransfected HEK293T cells; Right: Cell lysates from HEK293T cells transfected with RC208993 using transfection reagent MegaTran 2.0 (Cat# [TT210002]).



Coomassie blue staining of purified JMJD6 protein (Cat# [TP308993]). The protein was produced from HEK293T cells transfected with JMJD6 cDNA clone (Cat# RC208993) using MegaTran 2.0 (Cat# [TT210002]).