

## Product datasheet for RC208992

### ORAV1 (ORAOV1) (NM\_153451) Human Tagged ORF Clone

#### Product data:

**Product Type:** Expression Plasmids  
**Product Name:** ORAV1 (ORAOV1) (NM\_153451) Human Tagged ORF Clone  
**Tag:** Myc-DDK  
**Symbol:** ORAV1  
**Synonyms:** CIAB1; ORAOV1; TAOS1  
**Mammalian Cell Selection:** Neomycin  
**Vector:** pCMV6-Entry (PS100001)  
**E. coli Selection:** Kanamycin (25 ug/mL)  
**ORF Nucleotide Sequence:** >RC208992 representing NM\_153451  
Red=Cloning site Blue=ORF Green=Tags(s)

TTTTGTAATACGACTCACTATAGGGCGCCGGAATTCGTCGACTGGATCCGGTACCGAGGAGATCTGCC  
GCC**CGATCGCC**

ATGGCTGGCAGTCAGGACATATTCGATGCCATCGTGATGGCGGATGAGAGGTTTCATGGGAAGGGTATC  
GGGAAGGCTATGAAGAAGGCAGTAGTTGGGTGTGATGGAGGGAAGGCAGCATGGCAGCTGCATGGAGC  
CAAATCGGGTCTGAGATCGGGTCTACCAAGTTTTGCTTTTCATGGAATGTCTACTGCACAGTTGC  
ACCACTGAGAAGGACAGCAGAAAGATGAAGTCTTAGAATCATTGATTGGAATGATCCAGAAATTCCTT  
ATGATGACCTACTTACGATAAACTCCATGAAGACTTAGACAAGATCAGAGGAAAATTTAACAGTTTTG  
TTCGTTACTCAATGTTCCAGCCAGACTTTAAAATTAGTGCAGAAGTTCGGGACTTTCATT

**ACGCGT**ACGCGGCCGCTCGAGCAGAACTCATCTCAGAAGAGGATCTGGCAGCAAATGATATCCTGGATT  
ACAAGGATGACGACGATAAGGTTTAA

**Protein Sequence:** >RC208992 representing NM\_153451  
Red=Cloning site Green=Tags(s)  
MAGSQDIFDAIVMADERFHGEGYREGYEEGSSLGVMGRQHGLHGAKIGSEIGCYQGF AFAWKLLHSC  
TTEKDSRKMKVLESIGMIQKFPYDDPTYDKLHEDLDKIRGKFKQFCSLLNVQPDFKISAEAGSGLSF

**TR**TRPLEQKLISEEDLAANDILDYKDDDDKV

**Chromatograms:** [https://cdn.origene.com/chromatograms/mg4064\\_d05.zip](https://cdn.origene.com/chromatograms/mg4064_d05.zip)

**Restriction Sites:** SgfI-MluI



[View online »](#)

**Cloning Scheme:**


**ACCN:** NM\_153451

**ORF Size:** 411 bp

**OTI Disclaimer:** The molecular sequence of this clone aligns with the gene accession number as a point of reference only. However, individual transcript sequences of the same gene can differ through naturally occurring variations (e.g. polymorphisms), each with its own valid existence. This clone is substantially in agreement with the reference, but a complete review of all prevailing variants is recommended prior to use. [More info](#)

**OTI Annotation:** This clone was engineered to express the complete ORF with an expression tag. Expression varies depending on the nature of the gene.

**Components:** The ORF clone is ion-exchange column purified and shipped in a 2D barcoded Matrix tube containing 10ug of transfection-ready, dried plasmid DNA (reconstitute with 100 ul of water).

**Reconstitution Method:**

1. Centrifuge at 5,000xg for 5min.
2. Carefully open the tube and add 100ul of sterile water to dissolve the DNA.
3. Close the tube and incubate for 10 minutes at room temperature.
4. Briefly vortex the tube and then do a quick spin (less than 5000xg) to concentrate the liquid at the bottom.
5. Store the suspended plasmid at -20°C. The DNA is stable for at least one year from date of shipping when stored at -20°C.

**RefSeq:** [NM\\_153451.3](#)

**RefSeq Size:** 2544 bp

**RefSeq ORF:** 414 bp

**Locus ID:** 220064

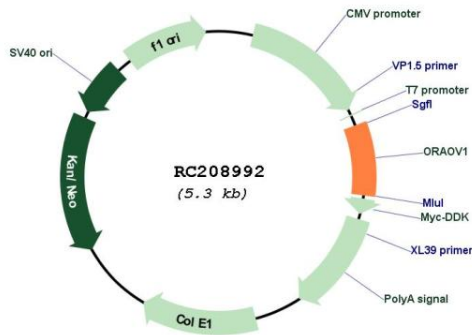
**UniProt ID:** [Q8WV07](#)

**Cytogenetics:** 11q13.3

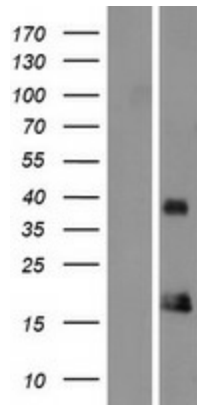
**MW:** 15.2 kDa

**Gene Summary:** The complex LTO1:YAE1 functions as a target specific adapter that probably recruits apo-ABCE1 to the cytosolic iron-sulfur protein assembly (CIA) complex machinery (PubMed:26182403). May be required for biogenesis of the large ribosomal subunit and initiation of translation (PubMed:23318452). May play a role in the regulation of proline metabolism and ROS production (PubMed:24930674).[UniProtKB/Swiss-Prot Function]

**Product images:**



Circular map for RC208992



Western blot validation of overexpression lysate (Cat# [LY407037]) using anti-DDK antibody (Cat# [TA50011-100]). Left: Cell lysates from untransfected HEK293T cells; Right: Cell lysates from HEK293T cells transfected with RC208992 using transfection reagent MegaTran 2.0 (Cat# [TT210002]).