

## Product datasheet for **RC208989**

### CSDC2 (NM\_014460) Human Tagged ORF Clone

#### Product data:

**Product Type:** Expression Plasmids  
**Product Name:** CSDC2 (NM\_014460) Human Tagged ORF Clone  
**Tag:** Myc-DDK  
**Symbol:** CSDC2  
**Synonyms:** dj347H13.2; PIPPIN  
**Mammalian Cell Selection:** Neomycin  
**Vector:** pCMV6-Entry (PS100001)  
**E. coli Selection:** Kanamycin (25 ug/mL)  
**ORF Nucleotide Sequence:** >RC208989 ORF sequence  
Red=Cloning site Blue=ORF Green=Tags(s)

TTTTGTAATACGACTCACTATAGGGCGGCCGGAATTCGTCGACTGGATCCGGTACCGAGGAGATCTGCC  
GCC**CGATCGCC**

ATGACTTCAGAGTCGACGTCACCCCGAGTTGTGCCCGCTCCACTCCCCAAGTCCCCAGTCTGGCCCA  
CCTTCCCCTTCCACAGGGAGGGCAGCAGGGTCTGGGAGCGGGTGGTGTCCACCTCGGGACCTACCCAG  
CCCTCTGCCACCAAGCGGACCAGGACCTATTCAGCGACAGCCCGGCCCTCAGCTGGCCCGTGTCAAG  
GGCGTCTGTAAGCAGTTCTCACGCTCACAGGGCCATGGCTTCATACCCCGAGAACGGGTCGGAGGACA  
TCTTCGTACATGTGTCTGACATCGAGGGGAGTACGTGCCAGTGGAGGGCGACGAGTGACCTACAAGAT  
GTGCCCTATCCCTCCCAAGAACCAGAAGTTCAGGCCGTGGAGGTGGTGTCTCACTCAGCTGGCCCCCAC  
ACTCCCCACGAGACGTGGTCTGGCCAGGTCGTGGGCTCC

**ACGCGT**ACGCGGCCGCTCGAGCAGAACTCATCTCAGAAGAGGATCTGGCAGCAAATGATATCCTGGATT  
ACAAGGATGACGACGATAAGGTTTAA

**Protein Sequence:** >RC208989 protein sequence  
Red=Cloning site Green=Tags(s)

MTSESTSPVVPPLHSPKSPVWPTFPFHREGSRVWERGGVPPRDLPSPKTRTRTYSATARASAGPVFK  
GVCKQFSRSQGHGFIPTENGSEIDFVHVSIDIEGEYVPEGDEVTKMCPIPPKNQKFQAVEVVLTLQAPH  
TPHETWSGQVVG

**TR**TRPLEQKLISEEDLAANDILDYKDDDDKV

**Chromatograms:** [https://cdn.origene.com/chromatograms/mk6356\\_c02.zip](https://cdn.origene.com/chromatograms/mk6356_c02.zip)



[View online >](#)

Restriction Sites: SgfI-MluI

Cloning Scheme:



ACCN: NM\_014460

ORF Size: 459 bp

OTI Disclaimer: The molecular sequence of this clone aligns with the gene accession number as a point of reference only. However, individual transcript sequences of the same gene can differ through naturally occurring variations (e.g. polymorphisms), each with its own valid existence. This clone is substantially in agreement with the reference, but a complete review of all prevailing variants is recommended prior to use. [More info](#)

OTI Annotation: This clone was engineered to express the complete ORF with an expression tag. Expression varies depending on the nature of the gene.

Components: The ORF clone is ion-exchange column purified and shipped in a 2D barcoded Matrix tube containing 10ug of transfection-ready, dried plasmid DNA (reconstitute with 100 ul of water).

Reconstitution Method:

1. Centrifuge at 5,000xg for 5min.
2. Carefully open the tube and add 100ul of sterile water to dissolve the DNA.
3. Close the tube and incubate for 10 minutes at room temperature.
4. Briefly vortex the tube and then do a quick spin (less than 5000xg) to concentrate the liquid at the bottom.
5. Store the suspended plasmid at -20°C. The DNA is stable for at least one year from date of shipping when stored at -20°C.

RefSeq: [NM\\_014460.4](#)

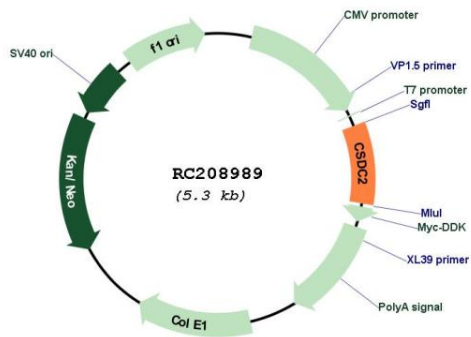
RefSeq Size: 2545 bp

RefSeq ORF: 462 bp

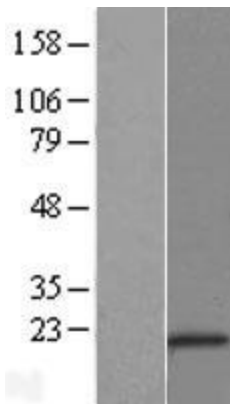
Locus ID: 27254

**UniProt ID:** [Q9Y534](#)  
**Cytogenetics:** 22q13.2  
**Protein Families:** Transcription Factors  
**MW:** 16.8 kDa  
**Gene Summary:** RNA-binding factor which binds specifically to the very 3' UTR ends of both histone H1 and H3.3 mRNAs, encompassing the polyadenylation signal. Might play a central role in the negative regulation of histone variant synthesis in the developing brain (By similarity). [UniProtKB/Swiss-Prot Function]

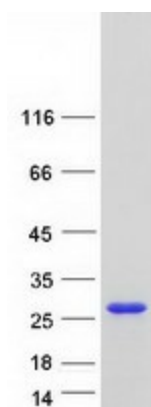
**Product images:**



Circular map for RC208989



Western blot validation of overexpression lysate (Cat# [LY415263]) using anti-DDK antibody (Cat# [TA50011-100]). Left: Cell lysates from untransfected HEK293T cells; Right: Cell lysates from HEK293T cells transfected with RC208989 using transfection reagent MegaTran 2.0 (Cat# [TT210002]).



Coomassie blue staining of purified CSDC2 protein (Cat# [TP308989]). The protein was produced from HEK293T cells transfected with CSDC2 cDNA clone (Cat# RC208989) using MegaTran 2.0 (Cat# [TT210002]).