

Product datasheet for **RC208986**

RTP1 (NM_153708) Human Tagged ORF Clone

Product data:

Product Type:	Expression Plasmids
Product Name:	RTP1 (NM_153708) Human Tagged ORF Clone
Tag:	Myc-DDK
Symbol:	RTP1
Synonyms:	Z3CXXC1
Mammalian Cell Selection:	Neomycin
Vector:	pCMV6-Entry (PS100001)
E. coli Selection:	Kanamycin (25 ug/mL)
ORF Nucleotide Sequence:	>RC208986 representing NM_153708 Red=Cloning site Blue=ORF Green=Tags(s)

TTTTGTAATACGACTCACTATAGGGCGGCCGGAATTCGTCGACTGGATCCGGTACCGAGGAGATCTGCC
GCC**CGGATCGCC**

ATGAGGATTTTTAGACCGTGGAGACTGCGCTGCCCTGCCCTGCACCTACCCTCACTCTCCGTGTTCTCAC
TAAGGTGGAAATTGCCTCCCTCACTACTGACGAGACCATGTGTAAAAGCGTGACCACAGATGAGTGGAA
GAAAGTCTTCTATGAGAAGATGGAGGAGCAAAGCCGGCTGACAGCTGGGACCTCATATAGACCCCAAC
CTCAAGCACAATGTGCTGAGCCCTGGTTGGAAGCAGTACCTGGAATTGCATGCTTCAGGCAGTTCCACT
GCTCCTGGTGCTGGCACACCTGGCAGTCGCCCTACGTGGTCATCCTCTTCCACATGTTCTGGACCGCGC
CCAGCGGGCGGGCTCGGTGCGCATGCGCGTCTTCAAGCAGCTGTGCTATGAGTGGCCACGCGCGCGCTG
GACGAGTCCAGCATGCTGGAGGAGAACATCGAGGGCCTGGTGGACAACCTCATCACCAGCCTGCGCGAGC
AGTGCTACGGCGAGCGTGGCGGCCAGTACCGCATCCACGTGGCCAGCCGCCAGGACAACCGCGGCCACCG
CGGAGAGTTCTGCGAGGCCTGCCAGGAGGGCATCGTGCCTGGAAGCCCAGCGAGAAGCTGCTGGAGGAG
GAGGCGACCACCTACACCTTCTCCCGGGCGCCAGCCCCACCAAGTCGCAGGACCAGACGGGCTCAGGCT
GGAACTTCTGCTATCCCCTGGTGCTTGTGTTGGGCCACGGTCTGCTGCTGATCATCTACCTGCAGTT
CTCTTTCCGTAGCTCCGTA

ACGCGTACGCGGCCGCTCGAGCAGAACTCATCTCAGAAGAGGATCTGGCAGCAAATGATATCCTGGATT
ACAAGGATGACGACGATAAGGTTTAA



[View online »](#)

Protein Sequence: >RC208986 representing NM_153708
 Red=Cloning site Green=Tags(s)

MRIFRPWRLRCPALHPLSLSVFSLRWKLPSTTDETMCKSVTTDEWKVFYEKMEEAKPADSWDLIIDPN
 LKHNVLSPGWKQYLELHASGRFHCSWCWHTWQSPYVVILFHMFLDRAQRAGSVRMRVFKQLCYECGTARL
 DESSMLEENIEGLVDNLITSLREQCYGERGGQYRIHVASRQDNRRHRGEFCEACQEGIVHWKPSEKLLLE
 EATTYTFSRAPSPTKSQDQTGSGWNFCIPWCLFWATVLLLLIIYLQFSFRSSV

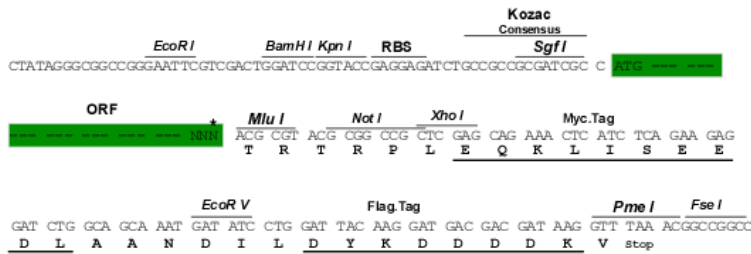
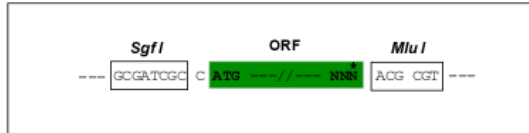
TRTRPLEQKLISEEDLAANDILDYKDDDDKV

Chromatograms: https://cdn.origene.com/chromatograms/mg2729_a09.zip

Restriction Sites: SgfI-MluI

Cloning Scheme:

Cloning sites used for ORF Shuttling:



* The last codon before the Stop codon of the ORF

ACCN: NM_153708

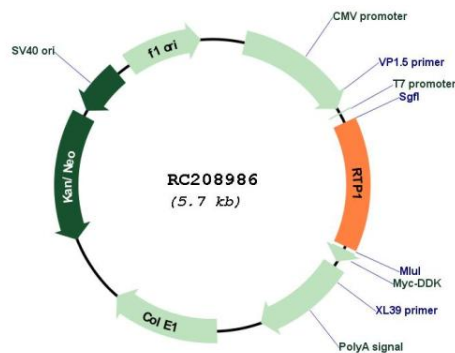
ORF Size: 789 bp

OTI Disclaimer: Due to the inherent nature of this plasmid, standard methods to replicate additional amounts of DNA in E. coli are highly likely to result in mutations and/or rearrangements. Therefore, OriGene does not guarantee the capability to replicate this plasmid DNA. Additional amounts of DNA can be purchased from OriGene with batch-specific, full-sequence verification at a reduced cost. Please contact our customer care team at custsupport@origene.com or by calling 301.340.3188 option 3 for pricing and delivery.

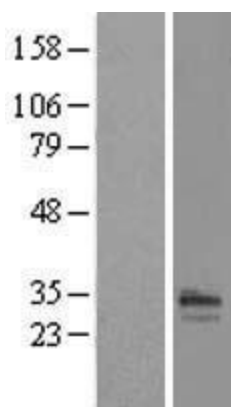
The molecular sequence of this clone aligns with the gene accession number as a point of reference only. However, individual transcript sequences of the same gene can differ through naturally occurring variations (e.g. polymorphisms), each with its own valid existence. This clone is substantially in agreement with the reference, but a complete review of all prevailing variants is recommended prior to use. [More info](#)

OTI Annotation: This clone was engineered to express the complete ORF with an expression tag. Expression varies depending on the nature of the gene.

Components:	The ORF clone is ion-exchange column purified and shipped in a 2D barcoded Matrix tube containing 10ug of transfection-ready, dried plasmid DNA (reconstitute with 100 ul of water).
Reconstitution Method:	<ol style="list-style-type: none"> 1. Centrifuge at 5,000xg for 5min. 2. Carefully open the tube and add 100ul of sterile water to dissolve the DNA. 3. Close the tube and incubate for 10 minutes at room temperature. 4. Briefly vortex the tube and then do a quick spin (less than 5000xg) to concentrate the liquid at the bottom. 5. Store the suspended plasmid at -20°C. The DNA is stable for at least one year from date of shipping when stored at -20°C.
RefSeq:	<u>NM_153708.3</u>
RefSeq Size:	2265 bp
RefSeq ORF:	792 bp
Locus ID:	132112
UniProt ID:	<u>P59025</u>
Cytogenetics:	3q27.3
Protein Families:	Druggable Genome, Transmembrane
MW:	30.7 kDa
Gene Summary:	Specifically promotes functional cell surface expression of olfactory receptors, but not of other GPCRs.[UniProtKB/Swiss-Prot Function]

Product images:


Circular map for RC208986



Western blot validation of overexpression lysate (Cat# [LY406975]) using anti-DDK antibody (Cat# [TA50011-100]). Left: Cell lysates from untransfected HEK293T cells; Right: Cell lysates from HEK293T cells transfected with RC208986 using transfection reagent MegaTran 2.0 (Cat# [TT210002]).