

Product datasheet for **RC208975**

ICOS Ligand (ICOSLG) (NM_015259) Human Tagged ORF Clone

Product data:

Product Type:	Expression Plasmids
Product Name:	ICOS Ligand (ICOSLG) (NM_015259) Human Tagged ORF Clone
Tag:	Myc-DDK
Symbol:	ICOS Ligand
Synonyms:	B7-H2; B7h; B7H2; B7RP-1; B7RP1; CD275; GL50; ICOS-L; ICOSL; LICOS
Mammalian Cell Selection:	Neomycin
Vector:	pCMV6-Entry (PS100001)
E. coli Selection:	Kanamycin (25 ug/mL)
ORF Nucleotide Sequence:	>RC208975 ORF sequence Red=Cloning site Blue=ORF Green=Tags(s)

TTTTGTAATACGACTCACTATAGGGCGGCCGGAATTCGTCGACTGGATCCGGTACCGAGGAGATCTGCC
GCC**CGGATCGCC**

ATGCGGCTGGGCAGTCTGGACTGCTCTTCTGCTCTTCAGCAGCCTTCGAGCTGATACTCAGGAGAAGG
AAGTCAGAGCGATGGTAGGCAGCGACGTGGAGCTCAGCTGCGCTTGCCCTGAAGGAAGCCGTTTTGATTT
AAATGATGTTTACGTATATTGGCAAACCAAGTGAGTCGAAAACCGTGGTGACCTACCACATCCCACAGAAC
AGCTCCTTGAAAACGTGGACAGCCGCTACCGAAACCGAGCCCTGATGTCACCGGCCGGCATGCTGCGGG
GCGACTTCTCCCTGCGCTTGTTCAACGTACCCCCAGGACGAGCAGAAGTTTCACTGCCTGGTGTGAG
CCAATCCCTGGGATTCAGGAGTTTTGAGCGTTGAGGTTACACTGCATGTGGCAGCAAACCTCAGCGTG
CCCGTCGTGAGCGCCCCACAGCCCCCTCCAGGATGAGCTCACCTTCACGTGTACATCCATAAACGGCT
ACCCCAGGCCCAACGTGTACTGGATCAATAAGACGGACAACAGCCTGCTGGACCAGGCTCTGCAGATGA
CACCGTCTTCTTGAACATGCGGGGCTTGTATGACGTGGTCAGCGTGTGAGGATCGCACGGACCCCCAGC
GTGAACATTGGCTGCTGCATAGAGAAGTGCTTCTGCAGCAGAACCTGACTGTGGCAGCCAGACAGGAA
ATGACATCGGAGAGAGACAAGATCACAGAGAATCCAGTCAGTACCGGCGAGAAAAACCGGCCACGTG
GAGCATCTGGCTGTCTGTGCTGCTTGTGGTCGTGGCGGTGGCCATAGGCTGGGTGTGCAGGGACCGA
TGCCCTCAACACAGCTATGCAGGTGCCTGGGCTGTGAGTCCGGAGACAGAGCTCACTGGCCACGTT

ACGCGTACGCGGCCGCTCGAGCAGAAACTCATCTCAGAAGAGGATCTGGCAGCAAATGATATCCTGGATT
ACAAGGATGACGACGATAAGGTTTAA



[View online »](#)

Protein Sequence: >RC208975 protein sequence
Red=Cloning site Green=Tags(s)

MRLGSPGLLFLLFSSLRADTQEKEVRAMVGSDELSCACPEGSRFDLNDVYVYWQTSESKTVVYHIPQN
 SLENVDSRYRNRALMSPAGMLRGDFSLRLFNVTPODEQKFHCLVLSQSLGFQEVLSVEVTLHVAANFSV
 PVVSAPHSPSQDELTFCTCSINGYPRPNVYWINKTDNSLLDQALQNDTVFLNMRGLYDVVSVLRIARTPS
 VNI GCC IENVLLQQLTVGSQTGNDIGERDKITENPVSTGEKNAATWSILAVLCLLVVVAIGAIVWCRDR
 CLQHSYAGAWAVSPETELTGHV

TRTRPLEQKLISEEDLAANDILDYKDDDDKV

Chromatograms: https://cdn.origene.com/chromatograms/mk6193_d08.zip

Restriction Sites: SgfI-MluI

Cloning Scheme:

Cloning sites used for ORF Shuttling:



* The last codon before the Stop codon of the ORF

ACCN: NM_015259

ORF Size: 906 bp

OTI Disclaimer: The molecular sequence of this clone aligns with the gene accession number as a point of reference only. However, individual transcript sequences of the same gene can differ through naturally occurring variations (e.g. polymorphisms), each with its own valid existence. This clone is substantially in agreement with the reference, but a complete review of all prevailing variants is recommended prior to use. [More info](#)

OTI Annotation: This clone was engineered to express the complete ORF with an expression tag. Expression varies depending on the nature of the gene.

Components: The ORF clone is ion-exchange column purified and shipped in a 2D barcoded Matrix tube containing 10ug of transfection-ready, dried plasmid DNA (reconstitute with 100 ul of water).

Reconstitution Method:

1. Centrifuge at 5,000xg for 5min.
2. Carefully open the tube and add 100ul of sterile water to dissolve the DNA.
3. Close the tube and incubate for 10 minutes at room temperature.
4. Briefly vortex the tube and then do a quick spin (less than 5000xg) to concentrate the liquid at the bottom.
5. Store the suspended plasmid at -20°C. The DNA is stable for at least one year from date of shipping when stored at -20°C.

Note: Plasmids are not sterile. For experiments where strict sterility is required, filtration with 0.22um filter is required.

RefSeq: [NM_015259.6](#)

RefSeq Size: 3320 bp

RefSeq ORF: 909 bp

Locus ID: 23308

UniProt ID: [O75144](#)

Cytogenetics: 21q22.3

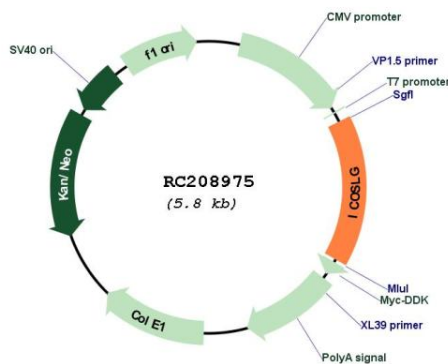
Protein Families: Transmembrane

Protein Pathways: Cell adhesion molecules (CAMs)

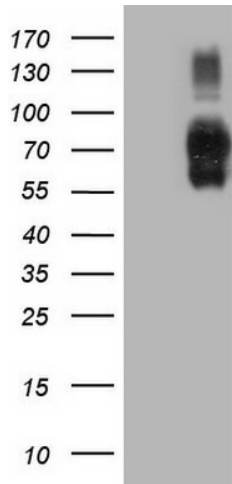
MW: 33.3 kDa

Gene Summary: Ligand for the T-cell-specific cell surface receptor ICOS. Acts as a costimulatory signal for T-cell proliferation and cytokine secretion; induces also B-cell proliferation and differentiation into plasma cells. Could play an important role in mediating local tissue responses to inflammatory conditions, as well as in modulating the secondary immune response by co-stimulating memory T-cell function (By similarity).[UniProtKB/Swiss-Prot Function]

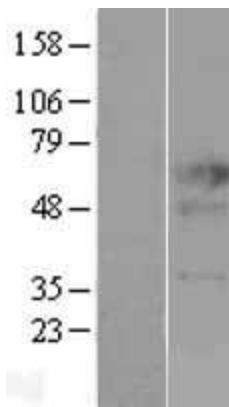
Product images:



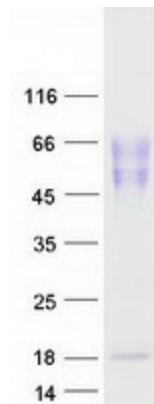
Circular map for RC208975



HEK293T cells were transfected with the pCMV6-ENTRY control (Cat# [PS100001], Left lane) or pCMV6-ENTRY ICOSLG (Cat# RC208975, Right lane) cDNA for 48 hrs and lysed. Equivalent amounts of cell lysates (5 ug per lane) were separated by SDS-PAGE and immunoblotted with anti-ICOSLG (Cat# [TA808779])(1:2000). Positive lysates [LY402420] (100ug) and [LC402420] (20ug) can be purchased separately from OriGene.



Western blot validation of overexpression lysate (Cat# [LY402420]) using anti-DDK antibody (Cat# [TA50011-100]). Left: Cell lysates from untransfected HEK293T cells; Right: Cell lysates from HEK293T cells transfected with RC208975 using transfection reagent MegaTran 2.0 (Cat# [TT210002]).



Coomassie blue staining of purified ICOSLG protein (Cat# [TP308975]). The protein was produced from HEK293T cells transfected with ICOSLG cDNA clone (Cat# RC208975) using MegaTran 2.0 (Cat# [TT210002]).