

## Product datasheet for RC208974

### USP38 (NM\_032557) Human Tagged ORF Clone

#### Product data:

Product Type:	Expression Plasmids
Product Name:	USP38 (NM_032557) Human Tagged ORF Clone
Tag:	Myc-DDK
Symbol:	USP38
Synonyms:	HP43.8KD
Mammalian Cell Selection:	Neomycin
Vector:	pCMV6-Entry (PS100001)
E. coli Selection:	Kanamycin (25 ug/mL)
ORF Nucleotide Sequence:	>RC208974 ORF sequence Red=Cloning site Blue=ORF Green=Tags(s)

TTTTGTAATACGACTCACTATAGGGCGGCCGGAATTCGTCGACTGGATCCGGTACCGAGGAGATCTGCC  
GCC**CGATCGCC**

ATGGACAAGATCCTGGAGGGCCTTGTGAGTTCCTCGCATCCCCTGCCCTCAAGCGGGTATTGTGCGGA  
AGGTGGTGAATCGGCGGAGCACTGGCTAGACGAGGCGCAGTGCAGGCCATGTTTGACCTGACGACCCG  
GCTCATCTGGAGGGCCAGGACCCTTCCAGCGGCAGGTGGGGCACCAGGTGCTGGAGGCCACGCACGA  
TACCACCGGCCAGAGTTCGAGTCTTCTCAACAAGACCTTCGTGTTGGGCCTCCTTCATCAGGGCTACC  
ACTCTCTGGACAGGAAGGATGTAGCCATCCTGGACTACATTCACAACGGCCTGAAGCTGATTATGAGCTG  
TCCGTCGGTGCTGGATCTCTTAGCCTCCTGCAGGTAGAGGTGTTACGGATGGTGTGAGAGGCCGGAG  
CCGCACTCTGTGCCGACTGAGCGACCTTCTGACCGACTTTGTGCAATGCATCCCAAGGGGAAATTGT  
CCATCACGTTCTGTCAACAGCTGGTTCGAACGATAGGCCATTTCCAGTGCGTGTCCACCCAGGAAAGAGA  
GCTGCGGGAATATGTCTCCAGGTGACAAAAGTGAGTAACTTGTGCAGAACATCTGGAAGGCCGAGCCT  
GCCACACTACTGCCTTCCTGCAAGAAGTTTTGCAAGCATCTCTCCACAGATGCATCATTGAACCTT  
CTGTAGCATTGGCAAGCCTTGTGCAGCATATTCCTCTTCAGATGATTACAGTTCATCAGGAGCCTTAC  
TACGGATCCAAATGTAAAAGATGCAAGTATGACCAAGCCCTTTCGAGAATGATTGACTGGCTATCCTGG  
CCATTGGCTCAGCATGTGGATACATGGTAATTGCACTCCTGAAAGGACTGGCAGCTGCCAGAAGTTTA  
CTATTTGATAGATGTTACTTTGCTGAAAATAGAAGTGGTTTTAATCGACTTTGGTTTCCTCTGTGAG  
ACCTGGTCTCTTGCAGTCTTTCTCACATGCTGCTTAGCTTTCAGCATTCTCCAGAGGCGTTCATTTG  
ATTGTTCTCATGTGGTAAATTTGGTTCATTCTTCAAATGATGGTCTGCCTTCAAGTACAGCCTTCT  
TAGTACAATTAACAGAATTGATACACTGTATGATGATCATTATCTGGATTTCCAGATCTCTATGAACC  
TATTCTGGAGGCAATAAAGGATTTCTAAGCCAGTGAAGAGAAGATTAAGTTAATTCTCAATCAAAGT  
GCCTGGACTTCTCAATCAATTTCTTGGCGTCTGCTTGTCTAGACTTTCTGGAAAATCTGAACTGGGA  
AAACTGGTCTTATAACCTAGGAAATACATGTTATATGAACAGTGTATACAAGCCTTGTATGGCCAC  
AGATTTACAGGACAAGTATTATCTTAAATCTAAACGGGTGCAATTCATTAATGAAAAATTACAGCAT



[View online »](#)

```

CTTTTGCCTTTCTGGCCATACACAGAGGGAAGCATACGCACCTCGGATATTCTTTGAGGCTTCCAGAC
CTCCATGGTTTACTCCCAGATCACAGCAAGACTGTTCTGAATACCTCAGATTTCTCCTTGACAGGCTCCA
TGAAGAAGAAAAGATCTTGAAAGTTCAGGCCTCACACAAGCCTTCTGAAATCTGGAATGCAGTGAAACT
TCTTTACAGGAAGTAGCTAGTAAAGCAGCAGTACTAACAGAGACCCTCGTACAAGTGCAGGTGAGAAGA
CTTTAATAGAAAAATGTTTGGAGGAAAACACGAACTCACATACGTTGTTTGAAGTGCAGGAGTACCTC
ACAAAAAGTGGAGCCTTACAGATCTTTCGCTTGCCTTTTGCCTTCTCTTTGGAAAAACATGTCT
GTCCAAGTCCAGCATCATCACCAGTATAACAAGATGGTGGTCTAATGCAAGCCTCTGTACCCGGCTCTT
CAGAAGAACCAGTAGTTTATAATCCAACAACAGCTGCCTTCATCTGTGACTCACTTGTGAATGAAAAAC
CATAGGCAGTCCCTAATGAGTTTTACTGTTCTGAAAACACTTCTGTCCCTAACGAATCTAACAGATT
CTTGTTAATAAGATGTACCTCAGAAACCAGGAGTGAACCACACCTTTCAGTAAGTACTACTAAATT
ATTTTTGGTCCAGAGATTCTTACTGGTGATAACCAATATTATTGTGAAAACCTGTGCCTCTCTGCAAAA
TGCTGAGAAAACATGCAAAACACGAGGAACTGAATACCTTATTCTTACTCTCCTGAGATTTTCATAT
GATCAGAAGTATCATGTGAGAAGGAAAAATTTAGACAATGTACTGCCACTGGTTTTGGAGTTGCCAG
TAAAAGAATTACTTCTTCTTTCATTGTCAGAAAGTTGGTCTGTAGATGTTGACTTCACTGATCTTAG
TGAGAACCTTGCTAAAAAATTAAGCCTTCAGGGACTGATGAAGCTTCTGCACAAAATTTGGTGCCTAT
CTATTAAGTTCGGTTGTGGTTCCTCTGGTATATCCTCTGAAAGTGGGCATTACTATTCTTATGCCAGAA
ATATCACAAAGTACAGACTCTTCATATCAGATGTACCACAGTCTGAGGCTCTGGCATTAGCATCCTCCCA
GAGTCACTTACTAGGGAGAGATAGTCCCAGTGCAGTTTTTGAACAGGATTTGGAAAAAAGGAAATGTCA
AAAGAATGGTTTTATTTAATGACAGTAGAGTGACATTTACTTCACTTTCAGTCCAGAAAATACGA
GCAGGTTTCAAAGGACACAGCTTATGTCTTTGTATAAAAAACAGCATAGTACTAATGGTTAAGTGG
TAATAACCAACCAGTGGACTCTGGATAAATGGAGACCCACTTACAGAAAGAACTTATGGATGCTATA
ACAAAAGACAATAAACTATTTTACAGGAACAAGAGTTGAATGCTCGAGCCCGGGCCCTCCAAGCTGCAT
CTGCTTCATGTTCACTTTCGGCCCAATGGATTTGATGACAACGACCACCAGGAAGCTGTGGACCAACTGG
TGGAGGGGTGGAGGAGATTTAATACAGTTGGCAGACTCGTATTT

```

ACGCGTACGCGGCGCTCGAGCAGAACTCATCTCAGAAGAGGATCTGGCAGCAATGATATCCTGGATT  
ACAAGGATGACGACGATAAGGTTTAA

**Protein Sequence:**

>RC208974 protein sequence  
Red=Cloning site Green=Tags(s)

```

MDKILEGLVSSSHPLPLKRVIVRKVVESAEHWLDEAQCEAMFDLTTRLILEGQDPFQRQVGHQVLEAYAR
YHRPEFESFFNKTFVLGLLHQGYHSLDRKDVAILDYIHNLKLI MSCPSVLDLFSLLQVEVLRMVCERPE
PQLCARLSDLLTDFVQCIPKGLSITFCQQLVRTIGHFQCVSTQERELREYVSQVTKVSNLLQNIWKAEP
ATLLPSLQEVFASISSTDASFEPSVALASLVQHIPLQMITVLIRSLTDPNVKDASMTQALCRMIDWLSW
PLAQHVDTWVIALLKGLAAVQKF TILIDVTLKIELVFNRLWFPLVRPGALAVLSHMLLSFQHSPEAFHL
IVPHVVNLVHSFKNDGLPSSTAFVLVQLTELIHCMMYHYSGFDPLEYPILEAIKDFPKPSEEKIKLILNQS
AWTSQSNLASCRLSGKSETGKTGLINLGNTCYMNSVIQALFMATDFRRQVLSLNLNGCNSLMKKLQH
LFAFLAHTQREAYAPRIFFEASRPPWFTPRSQQDCSEYLRFLLDRLHEEEKILKVQASHKPEILECSET
SLQEVASKAAVLTETPRTSDGEKTLIEKMFGGKLRTHIRCLNCRSTSQKVEAFDLSLAFPCSSLENMS
VQDPASSPSIQDGLMQASVPGPSEEPVVYNTTAAAFICDSL VNEKTI GSPPNEFYCSENTSVPNESNKI
LVNKDVPQKPGGETTPSVTDLLNYFLAPEIL TGDNQYYCENCASLQNAEKTMQITEEPEYLITLLRFSY
DQKYHVRKILDNVSLPLVLELPVKRITSFSSLSWSVDVDFDLSENLAKKLKPSGTDEASCTKLVPI
LLSSVVHSGISSESGHYYSYARNITSDSSYQMYHQSEALALASSQSHLLGRDSPA VFEQDLENKEMS
KEWFLFNDSRVFTFSFQSVQKITSRFPKDTAYVLLYKKQHSTNGLSGNNPTSGLWINGDPLQKELMDAI
TKDNKLYLQEQELNARARALQAASASCSFRPNFGDNDPPGSCGPTGGGGGGFNVTGRLVF

```

TRTRPLEQKLI SEEDLAANDILDYKDDDDKV

**Chromatograms:**

[https://cdn.origene.com/chromatograms/mk6262\\_e10.zip](https://cdn.origene.com/chromatograms/mk6262_e10.zip)

**Restriction Sites:**

Sgfl-Mlul

**Cloning Scheme:**


**ACCN:** NM\_032557

**ORF Size:** 3126 bp

**OTI Disclaimer:** The molecular sequence of this clone aligns with the gene accession number as a point of reference only. However, individual transcript sequences of the same gene can differ through naturally occurring variations (e.g. polymorphisms), each with its own valid existence. This clone is substantially in agreement with the reference, but a complete review of all prevailing variants is recommended prior to use. [More info](#)

**OTI Annotation:** This clone was engineered to express the complete ORF with an expression tag. Expression varies depending on the nature of the gene.

**Components:** The ORF clone is ion-exchange column purified and shipped in a 2D barcoded Matrix tube containing 10ug of transfection-ready, dried plasmid DNA (reconstitute with 100 ul of water).

- Reconstitution Method:**
1. Centrifuge at 5,000xg for 5min.
  2. Carefully open the tube and add 100ul of sterile water to dissolve the DNA.
  3. Close the tube and incubate for 10 minutes at room temperature.
  4. Briefly vortex the tube and then do a quick spin (less than 5000xg) to concentrate the liquid at the bottom.
  5. Store the suspended plasmid at -20°C. The DNA is stable for at least one year from date of shipping when stored at -20°C.

**RefSeq:** [NM\\_032557.6](#)

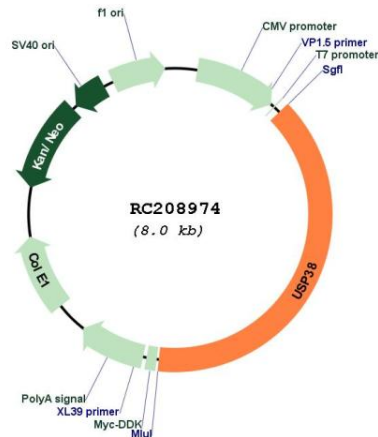
**RefSeq Size:** 7081 bp

**RefSeq ORF:** 3129 bp

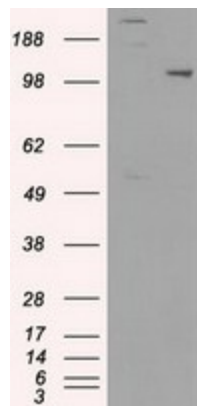
**Locus ID:** 84640

**UniProt ID:** [Q8NB14](#)

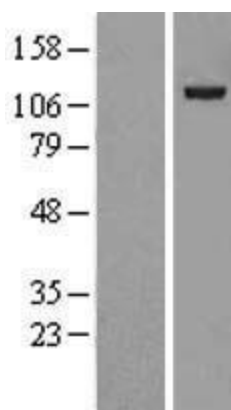
**Cytogenetics:** 4q31.21  
**Domains:** UCH  
**Protein Families:** Druggable Genome, Protease  
**MW:** 116.5 kDa  
**Gene Summary:** Deubiquitinating enzyme exhibiting a preference towards 'Lys-63'-linked ubiquitin chains. [UniProtKB/Swiss-Prot Function]

**Product images:**


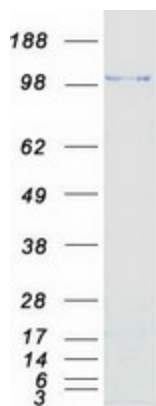
Circular map for RC208974



HEK293T cells were transfected with the pCMV6-ENTRY control (Cat# [PS100001], Left lane) or pCMV6-ENTRY USP38 (Cat# RC208974, Right lane) cDNA for 48 hrs and lysed. Equivalent amounts of cell lysates (5 ug per lane) were separated by SDS-PAGE and immunoblotted with anti-USP38 (Cat# [TA500312]). Positive lysates [LY410045] (100ug) and [LC410045] (20ug) can be purchased separately from OriGene.



Western blot validation of overexpression lysate (Cat# [LY410045]) using anti-DDK antibody (Cat# [TA50011-100]). Left: Cell lysates from untransfected HEK293T cells; Right: Cell lysates from HEK293T cells transfected with RC208974 using transfection reagent MegaTran 2.0 (Cat# [TT210002]).



Coomassie blue staining of purified USP38 protein (Cat# [TP308974]). The protein was produced from HEK293T cells transfected with USP38 cDNA clone (Cat# RC208974) using MegaTran 2.0 (Cat# [TT210002]).