

## Product datasheet for **RC208971**

### PTPDC1 (NM\_177995) Human Tagged ORF Clone

#### Product data:

Product Type:	Expression Plasmids
Product Name:	PTPDC1 (NM_177995) Human Tagged ORF Clone
Tag:	Myc-DDK
Symbol:	PTPDC1
Synonyms:	PTP9Q22
Mammalian Cell Selection:	Neomycin
Vector:	pCMV6-Entry (PS100001)
E. coli Selection:	Kanamycin (25 ug/mL)



[View online »](#)

ORF Nucleotide  
Sequence:

>RC208971 ORF sequence  
Red=Cloning site Blue=ORF Green=Tags(s)

TTTTGTAATACGACTCACTATAGGGCGGCCGGAATTCGTCGACTGGATCCGGTACCGAGGAGATCTGCC  
GCC**CGCATCGCC**

ATGGCTGCAGGAGTCTTGCCTCAGAATGAACAACCATATTCTACCTTGGTGAATAACAGCGAGTGTGTTG  
CAAACATGAAAGGAAATTTAGAACGTCCAACACCAAAGTACACAAAAGTAGGGGAGCGTTTACGGCATGT  
CATTCTGGACACATGGCATGTTCCATGGCGTGTGGCGGTAGAGCTTGCAAGTATGAGAACCAGCCCGC  
TGGAGTGAGCAGGAGCAAGCCATTAAGGGGTTTACTCATCTGGGTCACTGATAATATACTGGCCATGG  
CCCGCCATCCTCTGAGCTCCTGGAGAAGTACCACATCATTGATCAGTTCCTCAGCCATGGCATAAAAAAC  
AATAATCAACCTCCAGCGCCCTGGTGGAGCATGCTAGCTGTGGAAACCCTTGGAACAAGAAAGTGGCTTC  
ACATACCTTCTGAGGCTTTCATGGAGGCTGGCATTACTTCTACAATTCGGATGGAAGGATTATGGTG  
TAGCGTCTTTACTACTATCCTAGATATGGTGAAGGTGATGACATTTGCCTTACAGGAAGGAAAAGTAGC  
TATCCATTGTGCAGGGCTTGGTGAACAGGTGTTTTAATAGCCTGTTACTTAGTTTTGCAACGAGA  
ATGACTGCTGACCAAGCAATTATATTTGTGCGGGCAAAGCGACCAATTCATACAAACCAGAGGACAGC  
TCCTCTGTGTAAGGGAATTTACTCAGTTTCTAACTCCTCTCCGCAATATATTCTTGTGTGATCCCAA  
AGCACATGCTGTACCTTACCTCAATATCTAATTCGCCAGCGTCACTGCTTCAATGGTTATGAGGCACGA  
CTTCTGAAACACGTGCCAAAAATATCCACCTAGTTTGCAAAATGCTGCTGGACTTAGCGGAGAACAGGC  
CAGTGATGATGAAGGATGTGCCAAGGACCTGGTCTCTCTGCTGAAATAGAAAAGACAATGTCTGAGAT  
GGTCACCATGCAGCTGGATAAAGAGTTACTGAGGCATGACAGTGATTTTTCCAACCCGCCTAACCCCACT  
GCAGTGGCAGCAGATTTTGACAATCGAGGCATGATTTTCTCCAATGAGCAACAGTTTGACCCTCTTTGGA  
AAAGCGGAATGTTGAGTGCCTCAACCCCTGACTCATCTGAAAAGGCGGCTCAGCTACAGTGACTCAGA  
TTTAAAGAGGGCCGAGAACCCTCTGGAGCAAGGGGAGACTCCACAGACAGTGCCTGCCCAGATCTTGTT  
GGCCACAAGCCCAGGCAGCAGAAGCTCATAAGCCATTGTTACATCCCACAGTCTCCAGAACCAGACTTAC  
ACAAGGAAGCCTTGTTGCGCAGCACACTTTCTTTCTGGAGTCAGTCAAAGTTTGGAGGCCTGGAAGGACT  
CAAAGATAATGGGTACCAATTTTCCATGGAAGGATCATTCCAAAGGAAGCACAGCAGAGTGGAGCTTTC  
TCTGCAGATGTTTCAGGCTCACACAGCCCTGGGGAGCCAGTTTCAACCAGCTTTGCAATGTCCATAAGG  
ATCCAAACCTGCTCACCAGCAAGTGTCTCACTGTGAGTGTAAAACCTCATGGTGTGGGAGCCCTGGCTC  
TGTCAGGCAGAACAGCAGGACACCCGAAGCCCTCTGGACTGTGGCTCCAGTCCCAAAGCACAGTTCCTG  
GTTGAACATGAAACCCAGGACAGTAAAGATCTGTCTGAAGCAGCTTCACTCTGCATTACAGTCTGAAT  
TGAGTGTGAGGCAAGAAGAATACTGGCGGCCAAAGCCCTAGCAAATTTAAATGAATCTGTAGAAAAGGA  
GGAATAAAAAGGAAGGTAGAAATGTGGCAGAAAAGAGCTTAATCCCGAGATGGAGCTTGGGAAAGAATA  
TGTGGCGAGAGGGACCCTTTCATCCTATGCAGCTTGATGTGGTCTTGGGTGGAGCAACTGAAGGAGCCTG  
TAATCACCAGAGGAGTGTGGACATGTTGGTTGACAGGCGAGCAGATGCCGAGAAAGCACTTTTTTTATT  
AGAGAAGGGACAGCACCAGACTATTCTGCGTGTGCACTGCATAGTGAACCTGCAGACAATCCCGTG  
GATGTGGAGGAAGCTTTCCTTGCCCATGCCATTAAGGCATTCCTAAGGTTAATTTTATTCTGAAAATG  
GACCAACAGTTTACAACCCCTGAAGAAAATTTAAGCACACGCTGGAAGAAAAAAGAAAAATGACAAA  
AGATGGCCCTAAGCCTGGCCTC

**ACGCGT**ACGCGGCCGCTCGAGCAGAAACTCATCTCAGAAGAGGATCTGGCAGCAAATGATATCCTGGATT  
ACAAGGATGACGACGATAAGGTTTAA

Protein Sequence: >RC208971 protein sequence  
 Red=Cloning site Green=Tags(s)

MAAGVLPQNEQPYSTLVNNSECVANMKGNLERPTPKYTKVGERLRHVIPGHMACSMACGGRACKYENPAR  
 WSEQEQAIKGVYSSWVTDNILAMARPSSELLEKYHIIDQFLSHGIKTIINLQRPGEHASCNPLEQESGF  
 TYLPEAFMEAGIYFYNFGWKDYGVASLTTILDMVKVMTFALQEGKVAIHCHAGLGRGTVLIACYLVFATR  
 MTADQAIIFVRAKRPNSIQTRGQLLCVREFTQFLPLRNIFSCCDPKAHAVTLPQYLIRQRHLLHGYEAR  
 LLKHVPKIIHLVCKLLDLAENRPVMMKDVSEGPGLSAEIEKTMSEMTMQLDKELLRHDSDFSNNPNPT  
 AVAADFDNRGMIFSNEQQFDPLWKRNRNVECLQPLTHLKRRLSYSDSLKRAENLLEQGETPQTVPAQILV  
 GHKPRQKLIISHCYIPQSPEPDLHKEALVRSTLSFWSQSKFGGLEGLKDNQSPIFHGRIIPKEAQQSGAF  
 SADVSGSHSPGEPVSPSFANVHKDPNPAHQVSHCQCKTHGVGSPGSRVQNSRTPRSPDCGSSPKAQFL  
 VEHETQDSKDLSEAASHALQSEL SAEARRILA AKALANL NESVEKEELKRK VEMMQKELNSRDGAWERI  
 CGERDPF ILCSLMWSWVQLKEPVITKEDVDMLVDRRADA AEALF LLEKGGHQTILCVLHCIVNLQTI PV  
 DVEEAFLAHAIAKAF TKVNFDS ENGPTVYNTLKKIFKHTLEEKRKMTKDGP KPGL

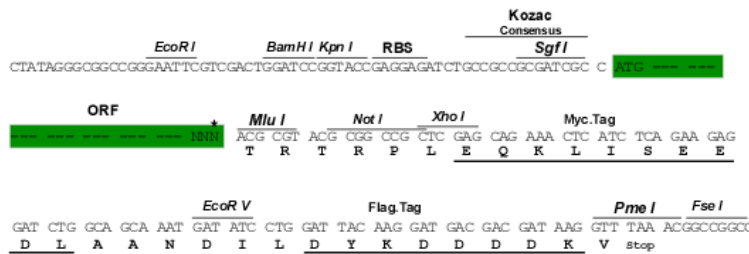
TRTRPLEQKLI SEEDLAANDILDYKDDDDKV

Chromatograms: [https://cdn.origene.com/chromatograms/mk6524\\_f12.zip](https://cdn.origene.com/chromatograms/mk6524_f12.zip)

Restriction Sites: SgfI-MluI

Cloning Scheme:

Cloning sites used for ORF Shuttling:



\* The last codon before the Stop codon of the ORF

ACCN: NM\_177995

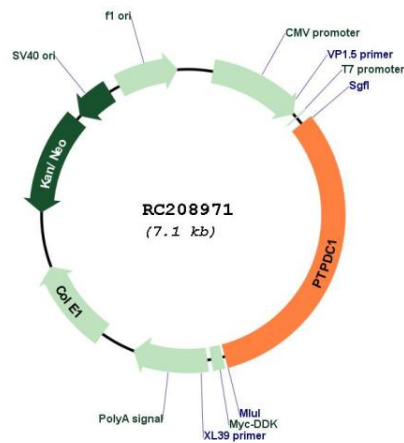
ORF Size: 2262 bp

OTI Disclaimer: The molecular sequence of this clone aligns with the gene accession number as a point of reference only. However, individual transcript sequences of the same gene can differ through naturally occurring variations (e.g. polymorphisms), each with its own valid existence. This clone is substantially in agreement with the reference, but a complete review of all prevailing variants is recommended prior to use. [More info](#)

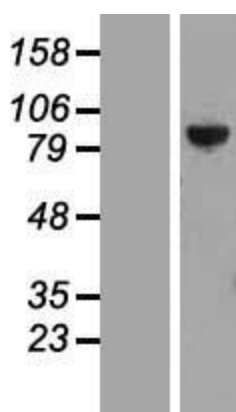
OTI Annotation: This clone was engineered to express the complete ORF with an expression tag. Expression varies depending on the nature of the gene.

<b>Components:</b>	The ORF clone is ion-exchange column purified and shipped in a 2D barcoded Matrix tube containing 10ug of transfection-ready, dried plasmid DNA (reconstitute with 100 ul of water).
<b>Reconstitution Method:</b>	<ol style="list-style-type: none"> <li>1. Centrifuge at 5,000xg for 5min.</li> <li>2. Carefully open the tube and add 100ul of sterile water to dissolve the DNA.</li> <li>3. Close the tube and incubate for 10 minutes at room temperature.</li> <li>4. Briefly vortex the tube and then do a quick spin (less than 5000xg) to concentrate the liquid at the bottom.</li> <li>5. Store the suspended plasmid at -20°C. The DNA is stable for at least one year from date of shipping when stored at -20°C.</li> </ol>
<b>RefSeq:</b>	<u><a href="#">NM_177995.3</a></u>
<b>RefSeq Size:</b>	4527 bp
<b>RefSeq ORF:</b>	2265 bp
<b>Locus ID:</b>	138639
<b>UniProt ID:</b>	<u><a href="#">A2A3K4</a></u>
<b>Cytogenetics:</b>	9q22.32
<b>Protein Families:</b>	Druggable Genome, Phosphatase
<b>MW:</b>	84.5 kDa
<b>Gene Summary:</b>	The protein encoded by this gene contains a characteristic motif of protein tyrosine phosphatases (PTPs). PTPs regulate activities of phosphoproteins through dephosphorylation. They are signaling molecules involved in the regulation of a wide variety of biological processes. The specific function of this protein has not yet been determined. Alternatively spliced transcript variants encoding distinct isoforms have been identified. [provided by RefSeq, Jul 2008]

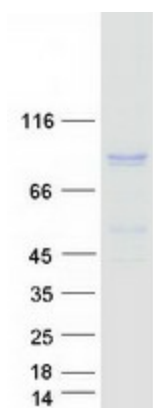
**Product images:**



Circular map for RC208971



Western blot validation of overexpression lysate (Cat# [LY405883]) using anti-DDK antibody (Cat# [TA50011-100]). Left: Cell lysates from untransfected HEK293T cells; Right: Cell lysates from HEK293T cells transfected with RC208971 using transfection reagent MegaTran 2.0 (Cat# [TT210002]).



Coomassie blue staining of purified PTPDC1 protein (Cat# [TP308971]). The protein was produced from HEK293T cells transfected with PTPDC1 cDNA clone (Cat# RC208971) using MegaTran 2.0 (Cat# [TT210002]).