

Product datasheet for **RC208970**

MPV17L (NM_173803) Human Tagged ORF Clone

Product data:

Product Type: Expression Plasmids
Product Name: MPV17L (NM_173803) Human Tagged ORF Clone
Tag: Myc-DDK
Symbol: MPV17L
Synonyms: M-LPH; MLPH1; MLPH2; MPV17L1
Mammalian Cell Selection: Neomycin
Vector: pCMV6-Entry (PS100001)
E. coli Selection: Kanamycin (25 ug/mL)
ORF Nucleotide Sequence: >RC208970 ORF sequence
 Red=Cloning site Blue=ORF Green=Tags(s)

TTTTGTAATACGACTCACTATAGGGCGGCCGGAATTCGTCGACTGGATCCGGTACCGAGGAGATCTGCC
 GCC**CGATCGCC**

ATGGCGGGCTGGTGGCCGGCGTTGTGCGCGCGGGCCCGGCCACCCGTGGCCACCAACGTGCTGCTTT
 ACGGCTCGCTCGTCTCGGCCGGGACGCGCTGCAACAGCGGCTGCAGGGCCGCGAGGCCAACTGGCGCCA
 GACGCGGCGCGTGGCCACGTTGGTGGTGACCTTCCACGCCAACTCAACTACGTGTGGCTGCGCCTGCTG
 GAGCGCGCGCTCCCGGGCCGAGCGCCGACGCCCTGCTGGCCAAGTTGCTGTGCGACCAGGTGGTGGTG
 CGCCCATCGCGGTCTCGGCCTTCTATGTCGAGTGGACTGATGTACTGGCCCTTTGTACAGCTGACCAACT
 TCAGCCTTGTTCTGTTCAATGGAGAACAGCTTACGCTGGAGTCTGTGGTTTTCTCTGGGCCACCTTCAT
 CTGTTTTTCCAGCAGAGTGG

ACGCGTACGCGGCCGCTCGAGCAGAACTCATCTCAGAAGAGGATCTGGCAGCAAATGATATCCTGGATT
 ACAAGGATGACGACGATAAGGTTTAA

Protein Sequence: >RC208970 protein sequence
 Red=Cloning site Green=Tags(s)

MAGWWPALSRARRHPWPTNVLLYGSLVSAGDALQQRLQGREANWRQTRRVATLVVTFHANFNYYVWLRLL
 ERALPGRAPHALLAKLLCDQVVGAPIAVSAFYVEWTDVLALCTADQLQPCSCSMENSLRWSLWFLGHLH
 LFFPAEW

TRTRPLEQKLISEEDLAANDILDYKDDDDKV

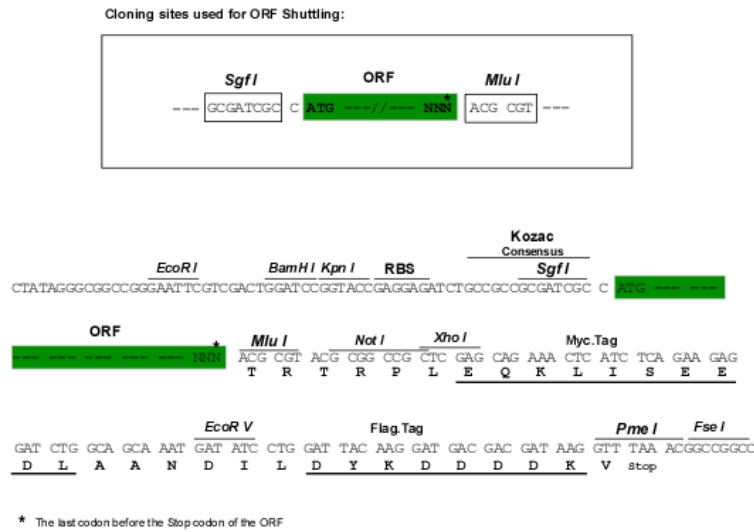
Chromatograms: https://cdn.origene.com/chromatograms/mk6360_f01.zip



View online »

Restriction Sites: SgfI-MluI

Cloning Scheme:



ACCN: NM_173803

ORF Size: 441 bp

OTI Disclaimer: The molecular sequence of this clone aligns with the gene accession number as a point of reference only. However, individual transcript sequences of the same gene can differ through naturally occurring variations (e.g. polymorphisms), each with its own valid existence. This clone is substantially in agreement with the reference, but a complete review of all prevailing variants is recommended prior to use. [More info](#)

OTI Annotation: This clone was engineered to express the complete ORF with an expression tag. Expression varies depending on the nature of the gene.

Components: The ORF clone is ion-exchange column purified and shipped in a 2D barcoded Matrix tube containing 10ug of transfection-ready, dried plasmid DNA (reconstitute with 100 ul of water).

Reconstitution Method:

1. Centrifuge at 5,000xg for 5min.
2. Carefully open the tube and add 100ul of sterile water to dissolve the DNA.
3. Close the tube and incubate for 10 minutes at room temperature.
4. Briefly vortex the tube and then do a quick spin (less than 5000xg) to concentrate the liquid at the bottom.
5. Store the suspended plasmid at -20°C. The DNA is stable for at least one year from date of shipping when stored at -20°C.

Note: Plasmids are not sterile. For experiments where strict sterility is required, filtration with 0.22um filter is required.

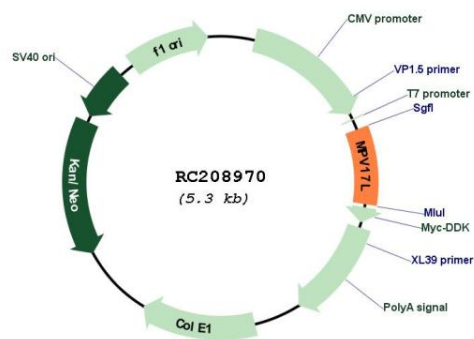
RefSeq: [NM_173803.4](#)

RefSeq Size: 2238 bp

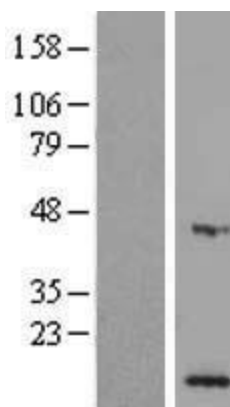
RefSeq ORF: 444 bp

| | |
|---------------|--|
| Locus ID: | 255027 |
| UniProt ID: | Q2QL34 |
| Cytogenetics: | 16p13.11 |
| MW: | 16.7 kDa |
| Gene Summary: | Isoform 1 participates in reactive oxygen species metabolism by up- or down-regulation of the genes of antioxidant enzymes.[UniProtKB/Swiss-Prot Function] |

Product images:



Circular map for RC208970



Western blot validation of overexpression lysate (Cat# [LY406415]) using anti-DDK antibody (Cat# [TA50011-100]). Left: Cell lysates from untransfected HEK293T cells; Right: Cell lysates from HEK293T cells transfected with RC208970 using transfection reagent MegaTran 2.0 (Cat# [TT210002]).