

Product datasheet for **RC208969**

Dymeclin (DYM) (NM_017653) Human Tagged ORF Clone

Product data:

Product Type:	Expression Plasmids
Product Name:	Dymeclin (DYM) (NM_017653) Human Tagged ORF Clone
Tag:	Myc-DDK
Symbol:	Dymeclin
Synonyms:	DMC; SMC
Mammalian Cell Selection:	Neomycin
Vector:	pCMV6-Entry (PS100001)
E. coli Selection:	Kanamycin (25 ug/mL)



[View online »](#)

ORF Nucleotide
Sequence:

>RC208969 ORF sequence
Red=Cloning site Blue=ORF Green=Tags(s)

TTTTGTAATACGACTCACTATAGGGCGGCCGGGAATTCGTGCGACTGGATCCGGTACCGAGGAGATCTGCC
GCC**CGGATCGCC**

ATGGGATCGAATAGCAGCAGAATCGGCGATCTTCTAAAAATGAGTACTTGAAAAAGTTATCAGGCACGG
AATCTATCTCTGAGAATGACCCGTTCTGGAATCAGCTTCTCTCATTCTTTCCCTGCACCAACTAGCAG
TAGTGAGTTGAAACTCTTGGAGGAAGCAACCATTTTCAGTCTGCAGGTCATTAGTTGAAAAACAATCTCGA
ACAGGAAATCTTGGTGCCTAATTAAGGTCTTCTTTCTAGAACCAAGAACTAAAACTTTCAGCAGAAT
GTCAGAACCACATCTTCAATTTGGCAGACACACAATGCTTTGTTTATTATTTGCTGTTTGGTAAAAGTGT
CATCTGTCAGATGTCAGAGGAGGAATTACAACCTCATTCTTACTTATGAAGAAAAATCTCCTGGCAATTAC
AGTTCTGACTCAGAAGATCTTTTGAAGAATTGCTGTGCTGTTTGTATGCAGTTGATCACTGATATCCAC
TCTTAGATATTACATATGAAATATCAGTAGAAGCTATATCAACAATGGTTGTTTTCTTTCTGCCAACT
CTTCCACAAAGAAGTTTTGCGACAGAGCATCAGCCACAAGTATTTGATGCGAGGTCATGTCTTCCATAC
ACCAGCAAACCTTGAAGACCTTATTATATAACTTTATCAGACAAGAAAAGCCACCTCCTCCAGGGGCC
ATGTTTTCCCTCAGCAGTCGGATGGGGGAGGACTGCTTTATGGACTTGCATCAGGAGTAGCAACAGGACT
CTGGACTGTCTTCACTAGGTGGTGTGGGCAGCAAAGCGGCTGCCTCTCCAGAGCTTTCTTCCCTCTG
GCCAACAGAGTCTCTGCTTCTGCTGGTGTGGCCAATCTGACAGATGCCTCAGATGCGCCAAACCCCT
ACAGACAAGCCATTATGCTCTTCAAGAACACACAAGATAGCAGTCCTTTCCCTCATCAATTCACATGC
CTTCCAGATCACTTTAATAGTTGTACACAGCTCTTTGTGAACAGCAGACATCTGATCAAGCAACTCTC
CTCTTGATACCTTGCTCCATCAAAATAGTAATATTAGAACATACATGTTGGCTCGCACAGATATGGAAA
ATCTTGTTTTACCAATTTGAGATTCTGTATCATGTTGAAGAAAGGAATTCACACCATGTGTATATGGC
CCTTATAATATTGTTGATCCTTACGGAAGATTATGGCTTCAACAGATCCATTCATGAAGTGATACTAAAA
AATATTACTTGGTATTCAGAACGAGTTTTAACTGAAATCTCCTTGGGGAGTCTCCTGATCCTGGTGGTAA
TAAGAACCATTCAATACAACATGACTAGGACACGAGACAAGTACCTTACACAAAATTGTTTGGCAGCTTT
AGCAAATATGTCGGCACAGTTTCGTTCTCTCCATCAGTATGCTGCCAGAGGATCATCAGTTTATTTTCT
TTGCTGTCTAAAAACACAACAAAGTTCTGGAACAAGCCACACAGTCCTTGAGAGGTTGCTGAGTTCTA
ATGATGTTCTCTACCAGATTATGCACAAGACCTAAATGTCATTGAAGAAGTGATTGCAATGATGTTAGA
GATCATCAACTCCTGCCTGACAAATCCCTTACCACAACCCAACTTGGTATACGCCCTGCTTTACAAA
CGCGATCTCTTTGAACAATTTGAACTCATCTTCAATTCAGGATATAATGCAAAATATTGATCTGGTGA
TCTCCTTCTTAGCTCAAGGTTGCTGCAAGCTGGAGCTGAGCTGTGAGTGGAAACGGGTCCTGGAAATCAT
TAAGCAAGGCGCTGTTGGCTGCCAAAGACAGACTGAAGAAATTTCCAGAATTGAAATCAAATATGTG
GAAGAGGAGCAGCCCAGGAGTTTTTATCCCCTATGTCTGGTCTCTTGTCTACAACCTCAGCAGTCGGCC
TGTAAGGAAATCCACAGGACATCCAGCTGTTACCATGGATTCCGAC

ACGCGTACGCGGCCGCTCGAGCAGAACTCATCTCAGAAGAGGATCTGGCAGCAATGATATCCTGGATT
ACAAGGATGACGACGATAAGGTTTAA

Protein Sequence: >RC208969 protein sequence
 Red=Cloning site Green=Tags(s)

MGSNSSRIGDLPKNEYLKKLSGTESISENDPFWNQLLSFSFPAPTSSSELKLEEATISVCRSLVENNPR
 TGNL GALIKVFLSRTKELKLSAECQNHIFIWQTHNALFIICLLKVFICQMSEELQLHFTYEKSPGNY
 SSDSEDLLEELLCLMLITDIPLLDITYEISVEAISTMVVFLSCQLFHKEVLRQSI SHKYL MRGPCLPY
 TSKLVKTL LYNFIRQEKPPPPGAHVFPQQSDGGGLLYGLASGVATGLWTVFTLGGVGSKAAASPELSSPL
 ANQSL LLLVL ANLTDASDAPNPYRQA IMSFKNTQDSSFPSSIPHAFQINFNSLYTALCEQQTSDQATL
 LLYTLLHQNSNIRTYMLARTDMENLVLP ILEILYHVEERNSHHVYMALIILLILTEDYGFNRSIHEVILK
 NITWYSERVLTEISLGSLLILVVIRTIQYNMTRTRDKYLHTNCLAALANMSAQFRSLHQYAAQRIISLFS
 LLSKKNKLVLEQATQSLRGLSSNDVPLPDYAQDLNVIEEVIRMMLEIINSCLTNSLHNNPVLVYALLYK
 RDLFEQFRTHPSFDIMQNDLVISFFSSRLQAGAELSERVLEI IKQGVVALPKDR LKKFP ELKFKYV
 EEEQPEEFFIPYVWSLVNSAVGLYWNPQDIQLFTMDS

TRTRPLEQKLISEEDLAANDILDYKDDDDKV

Chromatograms: https://cdn.origene.com/chromatograms/mk6693_h05.zip

Restriction Sites: SgfI-MluI

Cloning Scheme:



ACCN: NM_017653

ORF Size: 2007 bp

OTI Disclaimer: The molecular sequence of this clone aligns with the gene accession number as a point of reference only. However, individual transcript sequences of the same gene can differ through naturally occurring variations (e.g. polymorphisms), each with its own valid existence. This clone is substantially in agreement with the reference, but a complete review of all prevailing variants is recommended prior to use. [More info](#)

OTI Annotation: This clone was engineered to express the complete ORF with an expression tag. Expression varies depending on the nature of the gene.

Components: The ORF clone is ion-exchange column purified and shipped in a 2D barcoded Matrix tube containing 10ug of transfection-ready, dried plasmid DNA (reconstitute with 100 ul of water).

Reconstitution Method:

1. Centrifuge at 5,000xg for 5min.
2. Carefully open the tube and add 100ul of sterile water to dissolve the DNA.
3. Close the tube and incubate for 10 minutes at room temperature.
4. Briefly vortex the tube and then do a quick spin (less than 5000xg) to concentrate the liquid at the bottom.
5. Store the suspended plasmid at -20°C. The DNA is stable for at least one year from date of shipping when stored at -20°C.

RefSeq: [NM_017653.6](#)

RefSeq Size: 2628 bp

RefSeq ORF: 2010 bp

Locus ID: 54808

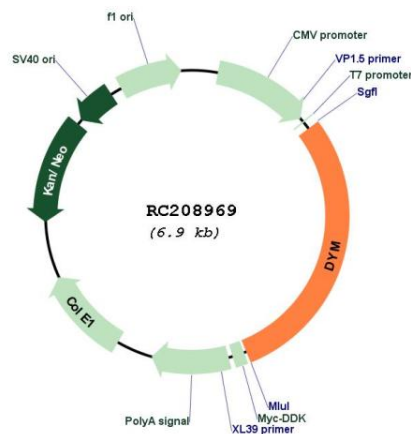
UniProt ID: [Q7RTS9](#)

Cytogenetics: 18q21.1

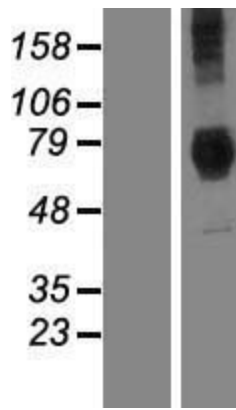
MW: 76 kDa

Gene Summary: This gene encodes a protein which regulates Golgi-associated secretory pathways that are essential to endochondral bone formation during early development. This gene is also believed to play a role in early brain development. This gene is widely expressed in embryos and is particularly abundant in chondrocytes and brain tissues. It encodes a peripheral membrane protein which shuttles between the cytosol and Golgi complex. Mutations in this gene are associated with two types of recessive osteochondrodysplasia: Dyggve-Melchior-Clausen (DMC) dysplasia and Smith-McCort (SMC) dysplasia. [provided by RefSeq, Jun 2017]

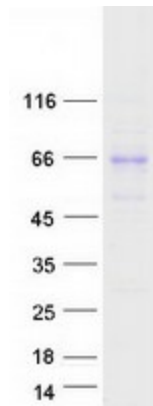
Product images:



Circular map for RC208969



Western blot validation of overexpression lysate (Cat# [LY413651]) using anti-DDK antibody (Cat# [TA50011-100]). Left: Cell lysates from untransfected HEK293T cells; Right: Cell lysates from HEK293T cells transfected with RC208969 using transfection reagent MegaTran 2.0 (Cat# [TT210002]).



Coomassie blue staining of purified DYM protein (Cat# [TP308969]). The protein was produced from HEK293T cells transfected with DYM cDNA clone (Cat# RC208969) using MegaTran 2.0 (Cat# [TT210002]).