

Product datasheet for **RC208968**

PSKH1 (NM_006742) Human Tagged ORF Clone

Product data:

| | |
|---------------------------|---|
| Product Type: | Expression Plasmids |
| Product Name: | PSKH1 (NM_006742) Human Tagged ORF Clone |
| Tag: | Myc-DDK |
| Symbol: | PSKH1 |
| Mammalian Cell Selection: | Neomycin |
| Vector: | pCMV6-Entry (PS100001) |
| E. coli Selection: | Kanamycin (25 ug/mL) |
| ORF Nucleotide Sequence: | >RC208968 ORF sequence Red=Cloning site Blue=ORF Green=Tags(s) |

TTTTGTAATACGACTCACTATAGGGCGGCCGGGAATTCGTCGACTGGATCCGGTACCGAGGAGATCTGCC
GCC**CGATCGCC**

ATGGGCTGTGGGACAAGCAAGGTCCTTCCCAGCCACCCAAGGATGTCCAGCTGGATCTGGTCAAGAAGG
TGGAGCCCTTCAGTGGCACTAAGAGTGACGTGTACAAGCACTTCATCACAGAGGTGGACAGTGTGGCCC
TGTCAAAGCCGGGTTCCCAGCAGCAAGTCAGTATGCACACCCCTGCCCGGTCCCCGACTGCTGGCCAC
ACGGAGCCTCCCTCAGAACCACCACGAGGGCCAGGGTAGCTAAGTACAGGGCCAAGTTTGACCCACGTG
TTACAGCTAAGTATGACATCAAGGCCCTAATTGGCCGAGGCAGCTTCAGCCGAGTGGTACGTGTAGAGCA
CCGGGCAACCCGGCAGCGTATGCCATCAAGATGATTGAGACCAAGTACCGGGAGGGCGGGAGGTGTGT
GAGTCGGAGCTGCGTGTGCTGCGTCGGGTGCGTCAAGCAACATCATCCAGCTGGTGGAGGTGTTGAGAG
CACAGGAGCGGGTGTACATGGTGTGGAGCTGGCCACTGGTGGAGAGCTCTTTGACCGCATCATTGCCAA
GGGCTCCTTACCAGCGTACGACCCACGCGGGTGTGCGATGGTGTGGATGGCGTCCGGTATCTGCAT
GCACTGGGCATCACACCCGAGACCTCAAACCTGAGAATCTGCTCTACTACCATCCGGGCACTGACTCCA
AGATCATCATCCCGACTTCGGCCTGGCCAGTGTGCGAAGAAGGGTGTGACTGCTTGATGAAGACCAC
CTGTGGCAGCCCTGAGTACATTGCCCGAAGTCTGGTCCGCAAGCCATACACCAACTCAGTGGACATG
TGGGCGCTGGGCGTCATTGCCTACATCCTACTCAGTGGCACCATGCCGTTTGAGGATGACAACCGTACCC
GGCTGTACCGGCAGATCCTCAGGGGCAAGTACAGTTACTCTGGGAGCCCTGGCCTAGTGTGTCCAACT
GGCCAAGGACTTCATTGACCGCCTGCTGACAGTGGACCCTGGAGCCCGTATGACTGCACTGCAGGCCCTG
AGGCACCCGTGGGTGGTGTGAGCATGGCTGCCTTTCATCCATGAAGAACCTGCACCGCTCCATATCCCAGA
ACCTCCTTAAACGTGCCTCCTCGCGTGCAGAGCACCAATCTGCCAGTCCACGCGTTCCAGCCGCTC
CACAGCTCCAATAAGTACGCGGTGTGCGGGAACGGGAGCTGCGGGAGCTCAACTGCGCTACCAGCAG
CAATAAATGGC

AGCGGACCGACGCGTACGCGGCCGCTCGAGCAGAACTCATCTCAGAAGAGGATCTGGCAGCAAATGATATCC
TGGATTACAAGGATGACGACGATAAGGTTTAA



[View online »](#)

Protein Sequence: >RC208968 protein sequence
 Red=Cloning site Green=Tags(s)

MGCGTSKVLPEPPKDVQLDLVKKVEPFSGTKSDVYKHFITEVDSVGPVKAGFPAASQYAHPCPGPPTAGH
 TEPPSEPPRRARVAKYRAKFDPRVTAKYDIKALIGRGSFSRVVREHVRATROPYAIKMIETKYREGREVC
 ESELRVLRVRHANIQLVEVFETQERYVMVMEATGGELFDRIIAKGSFTERDATRVLQMVLDGVRYLH
 ALGITHRDLKPENLLYYHPGTDKIIITDFGLASARKKGGDDCLMKTTCTGPEYIAPEVLVRKPYTNSVDM
 WALGVIAYILLSGTMPEDDNRTRLRQILRGKYSYSGEPWPSVSNLAKDFIDRLLTVDPGARMTALQAL
 RHPWVVSMAASSSMKNLHRISQNLKRASSRCQSTKSAQSTRSSRSTRSNKSRVRERELRELNLRYQQ
 QYNG

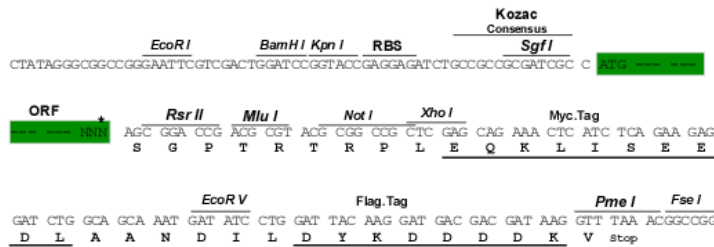
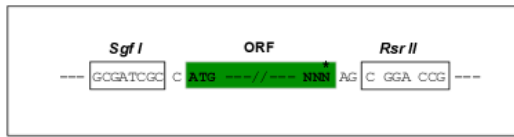
SGPTRTRPLEQKLI SEEDLAANDILDYKDDDDKV

Chromatograms: https://cdn.origene.com/chromatograms/mk6186_h07.zip

Restriction Sites: SgfI-RsrII

Cloning Scheme:

Cloning sites used for ORF Shuttling:



* The last codon before the Stop codon of the ORF

ACCN: NM_006742

ORF Size: 1272 bp

OTI Disclaimer: The molecular sequence of this clone aligns with the gene accession number as a point of reference only. However, individual transcript sequences of the same gene can differ through naturally occurring variations (e.g. polymorphisms), each with its own valid existence. This clone is substantially in agreement with the reference, but a complete review of all prevailing variants is recommended prior to use. [More info](#)

OTI Annotation: This clone was engineered to express the complete ORF with an expression tag. Expression varies depending on the nature of the gene.

Components: The ORF clone is ion-exchange column purified and shipped in a 2D barcoded Matrix tube containing 10ug of transfection-ready, dried plasmid DNA (reconstitute with 100 ul of water).

Reconstitution Method:

1. Centrifuge at 5,000xg for 5min.
2. Carefully open the tube and add 100ul of sterile water to dissolve the DNA.
3. Close the tube and incubate for 10 minutes at room temperature.
4. Briefly vortex the tube and then do a quick spin (less than 5000xg) to concentrate the liquid at the bottom.
5. Store the suspended plasmid at -20°C. The DNA is stable for at least one year from date of shipping when stored at -20°C.

RefSeq: [NM_006742.3](#)

RefSeq Size: 3505 bp

RefSeq ORF: 1275 bp

Locus ID: 5681

UniProt ID: [P11801](#)

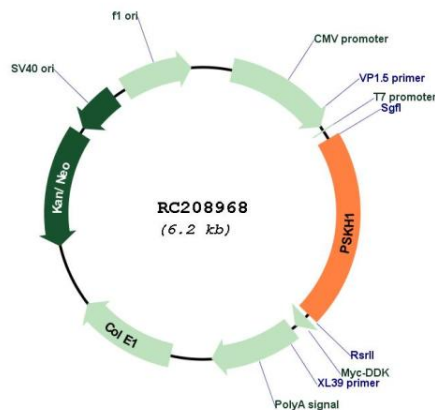
Cytogenetics: 16q22.1

Protein Families: Druggable Genome, Protein Kinase

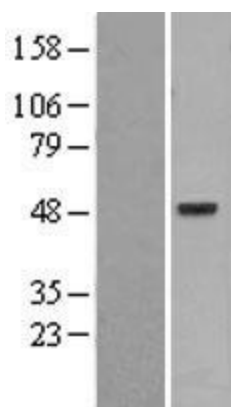
MW: 48 kDa

Gene Summary: May be a SFC-associated serine kinase (splicing factor compartment-associated serine kinase) with a role in intranuclear SR protein (non-snRNP splicing factors containing a serine/arginine-rich domain) trafficking and pre-mRNA processing.[UniProtKB/Swiss-Prot Function]

Product images:



Circular map for RC208968



Western blot validation of overexpression lysate (Cat# [LY402014]) using anti-DDK antibody (Cat# [TA50011-100]). Left: Cell lysates from untransfected HEK293T cells; Right: Cell lysates from HEK293T cells transfected with RC208968 using transfection reagent MegaTran 2.0 (Cat# [TT210002]).