

## Product datasheet for **RC208959**

### LRR57 (NM\_153260) Human Tagged ORF Clone

#### Product data:

Product Type:	Expression Plasmids
Product Name:	LRR57 (NM_153260) Human Tagged ORF Clone
Tag:	Myc-DDK
Symbol:	LRR57
Mammalian Cell Selection:	Neomycin
Vector:	pCMV6-Entry (PS100001)
E. coli Selection:	Kanamycin (25 ug/mL)
ORF Nucleotide Sequence:	>RC208959 representing NM_153260 Red=Cloning site Blue=ORF Green=Tags(s)

TTTTGTAATACGACTCACTATAGGGCGGCCGGAATTCGTCGACTGGATCCGGTACCGAGGAGATCTGCC  
GCC**CGATCGCC**

ATGGGAAACAGTGCCTCCGCGCTCATGTGAAACGGCGCAGAAAACGGTGTCTTTCAGCTTAAGGACC  
GAGGGCTGACCGAGTCCCCGCAGACTTGAGAAGCTGACGAGCAATCTCAGGACCATCGACTTGTCCAA  
CAACAAGATCGAAAGCCTACCGCCTTTGCTGATAGGAAAGTTCCTCTGCTGAAGAGCCTCTCCCTGAAC  
ACAACAACACTGACTGTTCTGCCTGATGAGATATGCAATCTGAAAAACTAGAGACGCTAAGCCTAAAC  
ACAATCACCTTAGAGAGCTGCCGCTACCTTTGGGCAACTCTCTGCCCTCAAGACCCTGAGCCTCTCTGG  
GAACCAACTGGGAGCATTACCTCCCAACTTTGTAGCCTACGGCACCTGGATGTGATGGATCTCTCTAAG  
AACCAGATTCGAAGTATACCTGACTCAGTGGGAGAGCTGCAAGTCATCGAACTCAACCTCAACCAGAATC  
AGATATCTCAGATCTCAGTGAAGATATCTTGTGTCCACGCCTTAAAATCTTCGCCTGGAAGAGAATTG  
TCTTGAGCTCAGCATGCTTCCCCAGAGCATCCTCAGTGATTCCCAGATCTGTCTGCTTGTGTGGAAGGC  
AATCTTTTGAATAAAGAACTTCGAGAACTGGAAGGCTATGATAAGTACATGGAGAGGTTACAGCCA  
CCAAGAAGAAGTTTGCG

**ACGCGT**ACGCGGCCGCTCGAGCAGAAAACCTCATCTCAGAAGAGGATCTGGCAGCAAATGATATCTGGATT  
ACAAGGATGACGACGATAAGGTTTAA



[View online »](#)

**Protein Sequence:** >RC208959 representing NM\_153260  
 Red=Cloning site Green=Tags(s)

MGNSALRAHVETAQKTGVFQKDRGLTEFPADLQKLTSNLRTIDLNNKIESLPPLLIGKFTLLKSLN  
 NNKLTVLPDEICNLKLETLNHLRELSTFGQLSALKTSLSGNQLGALPPQLCSLRHLDVMDLSK  
 NQIRSIIPDSVGLQVIELNLNQIQISQISVKISCCPRLKILRLEENCLLSMLPQSILSDSQICLLAVEG  
 NLFEIKKLRELEGYDKYMERFTATKKKFA

TRTRPLEQKLISEEDLAANDILDYKDDDDKV

**Chromatograms:** [https://cdn.origene.com/chromatograms/ja1466\\_c11.zip](https://cdn.origene.com/chromatograms/ja1466_c11.zip)

**Restriction Sites:** SgfI-MluI

**Cloning Scheme:**

Cloning sites used for ORF Shuttling:



\* The last codon before the Stop codon of the ORF

**ACCN:** NM\_153260

**ORF Size:** 717 bp

**OTI Disclaimer:** The molecular sequence of this clone aligns with the gene accession number as a point of reference only. However, individual transcript sequences of the same gene can differ through naturally occurring variations (e.g. polymorphisms), each with its own valid existence. This clone is substantially in agreement with the reference, but a complete review of all prevailing variants is recommended prior to use. [More info](#)

**OTI Annotation:** This clone was engineered to express the complete ORF with an expression tag. Expression varies depending on the nature of the gene.

**Components:** The ORF clone is ion-exchange column purified and shipped in a 2D barcoded Matrix tube containing 10ug of transfection-ready, dried plasmid DNA (reconstitute with 100 ul of water).

- Reconstitution Method:**
1. Centrifuge at 5,000xg for 5min.
  2. Carefully open the tube and add 100ul of sterile water to dissolve the DNA.
  3. Close the tube and incubate for 10 minutes at room temperature.
  4. Briefly vortex the tube and then do a quick spin (less than 5000xg) to concentrate the liquid at the bottom.
  5. Store the suspended plasmid at -20°C. The DNA is stable for at least one year from date of shipping when stored at -20°C.

**RefSeq:** [NM\\_153260.3](#)

**RefSeq Size:** 2647 bp

**RefSeq ORF:** 720 bp

**Locus ID:** 255252

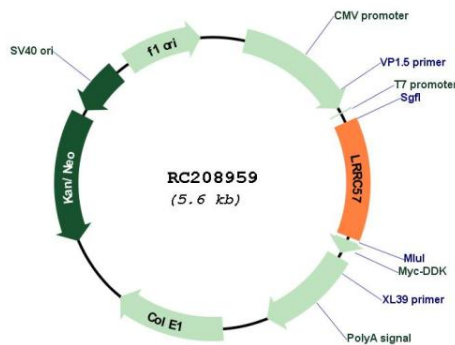
**UniProt ID:** [Q8N9N7](#)

**Cytogenetics:** 15q15.2

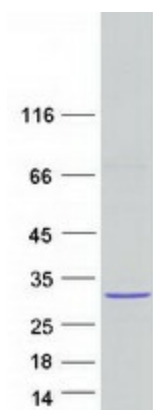
**Protein Families:** Druggable Genome

**MW:** 26.6 kDa

**Product images:**



Circular map for RC208959



Coomassie blue staining of purified LRRC57 protein (Cat# [TP308959]). The protein was produced from HEK293T cells transfected with LRRC57 cDNA clone (Cat# RC208959) using MegaTran 2.0 (Cat# [TT210002]).