

Product datasheet for **RC208948**

C1S (NM_201442) Human Tagged ORF Clone

Product data:

Product Type:	Expression Plasmids
Product Name:	C1S (NM_201442) Human Tagged ORF Clone
Tag:	Myc-DDK
Symbol:	C1S
Synonyms:	EDSPD2
Mammalian Cell Selection:	Neomycin
Vector:	pCMV6-Entry (PS100001)
E. coli Selection:	Kanamycin (25 ug/mL)



[View online »](#)

ORF Nucleotide
Sequence:

>RC208948 ORF sequence
Red=Cloning site Blue=ORF Green=Tags(s)

TTTTGTAATACGACTCACTATAGGGCGGCCGGAATTCGTCGACTGGATCCGGTACCGAGGAGATCTGCC
GCCGCGATCGCC

ATGTGGTGCATTGCTGTTTTCTACTTTTTGGCATGGGTTTATGCTGAGCCTACCATGTATGGGGAGATCC
TGTCCTTAACATCCTCAGGCATATCCAGTGAGGTAGAGAAATCTTGGGACATAGAAGTTCTGAAGG
GTATGGGATTCACCTCTACTTCACCCATCTGGACATTGAGCTGTCAGAGAACTGTGCGTATGACTCAGTG
CAGATAATCTCAGGAGACACTGAAGAAGGGAGGCTCTGTGGACAGAGGAGCAGTAACAATCCCCACTCTC
CAATTGTGAAGAGTTCCAAGTCCCATACAACAACTCCAGGTGATCTTTAAGTCAGACTTTTCCAATGA
AGAGCGTTTTACGGGTTTGTGCATACATGTTGCCACAGACATAAATGAATGCACAGATTTTGTAGAT
GTCCTTGTAGCCACTTCTGCAACAATTCATTGGTGGTACTTCTGCTCCTGCCCCCGGAATATTTCC
TCCATGATGACATGAAGAATTGCGGAGTTAATTGCAGTGGGGATGTATTCAGTGCCTGATTGGGGAGAT
TGCAAGTCCCAATTATCCCAAACCATATCCAGAGAACTCAAGGTGTAATACCAGATCCGGTTGGAGAAA
GGGTTCCAAGTGGTGGTACCTTGGGAGAGAAGATTTGATGTGAAGCAGCTGACTCAGCGGAAACT
GCCTTGACAGTTTGTGTTTGTGCAGGAGATCGGCAATTTGGTCTTACTGTGGTCATGGATCCCTGG
GCCTCTAAATATTGAAACCAAGAGTAATGCTCTTGATATCATCTTCCAACTGATCTAACAGGGCAAAAA
AAGGGCTGAAACTTCGCTATCATGGAGATCCAATGCCCTGCCCTAAGGAAGACACTCCCAATTCGTGTT
GGGAGCCTGCGAAGGCAAAATATGTCTTTAGAGATGTGGTGCAGATAACCTGTCTGGATGGGTTTGAAGT
TGTGGAGGACGTGTTGGTGAACATCTTTCTATTCGACTGTCAAAGCAATGAAAGTTGAAGACCCAG
AACTGAAATGTCAACCTGTGGACTGTGGCATTCTGAATCCATTGAGAATGGTAAAGTTGAAGACCCAG
AGAGCATTGTTTGGTCTGTCACTCCGCTACACTTGTGAGGAGCCATATTACTACATGGAAAATGGAGG
AGGTGGGAGATCACTGTGCTGGTAACGGGAGCTGGGTGAATGAGGTGCTGGGCCCGGAGCTGCCGAAA
TGTGTTCCAGTCTGTGGAGTCCCAAGAGAACCTTTGAAGAAAAACAGAGGATAATTGGAGGATCCGATG
CAGATATTAATAACTTCCCTGGCAAGTCTTCTTTGACAACCCATGGGCTGGTGGAGCGCTCATTAAATGA
GTACTGGGTGCTGACGGCTGCTCATGTTGTGGAGGAAACAGGGAGCCAACAATGTATGTTGGGTCCACC
TCAGTGCAGACCTCACGGCTGGCAAAATCCAAGATGCTCACTCCTGAGCATGTGTTTATTCATCCGGGAT
GGAAGCTGCTGGAAGTCCAGAAGGACGAACCAATTTGATAATGACATTGCACTGGTGGGCTGAAAGA
CCCAGTAAAAATGGGACCACCGTCTCTCCCATCTGCCTACCAGGCACCTCTCCGACTACAACCTCATG
GATGGGACCTGGGACTGATCTCAGGCTGGGGCCGAACAGAGAAGAGAGATCGTGTGTTGCGCTCAAGG
CGCAAGGTTACCTGTAGCTCCTTAAGAAAATGCAAAGAAGTAAAGTGGAGAAACCCACAGCAGATGC
AGAGGCCTATGTTTTCACTCCTAACATGATCTGTGCTGGAGGAGAGAAGGCATGGATAGCTGTAAGGG
GACAGTGGTGGGGCCTTTGCTGTACAGGATCCCAATGACAAGACCAAAATCTACGCAGCTGGCCTGGTGT
CCTGGGGCCCCAGTGTGGGACCTATGGGCTCTACACCGGTAAGAAGTATGTTGACTGGATAATGAA
GACTATGCAGGAAAAATAGCACCCCGTGAGGAC

ACGCGTACGCGGCCGCTCGAGCAGAACTCATCTCAGAAGAGGATCTGGCAGCAATGATATCCTGGATT
ACAAGGATGACGACGATAAGGTTTAA

Protein Sequence: >RC208948 protein sequence
Red=Cloning site Green=Tags(s)

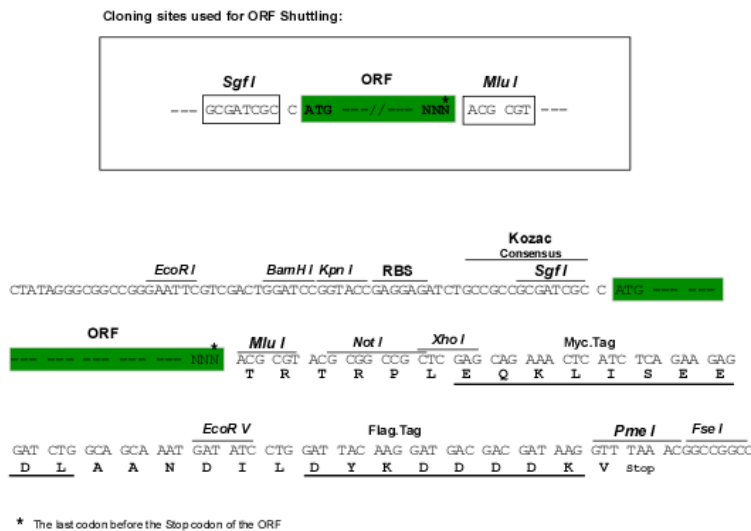
```
MWCIVLFSLLAWVYAeptMYGEILSPNYPQAYPSEVEKSWDIEVPEGYGIHL YFTHLDIELSENcAYDSV
QIIISGDTEEGRLCGQRSSNNPHSPIVEEFQVPYNKLQVIFKSDFSNEERFTGFAAYVATDINECTDFVD
VPCSHFCNNFIGGYFCSCPPEYFLHDDMKNCGVNCSGDVFTALIGEIASPNYPKYPENSRCeYQIRLEK
GFQVVVTLRREDFDVEAADSAGNCLDSL VVAGDRQFGPYCGHGFPGLNIETKSNALDII FQTDLTGQK
KGWKLRYHGDPMPCPKEDTPNSVWEPAKAKYVFRD VVQITCLDGFVVEGRVGVATSFYSTCQSNKGWSNS
KLKcQPVDcGIPESiENgKVEDPESTLFGSVIRYTCeEPYYMENGggGGEYHCAGNGSWVNEVLGPeLPK
CVPVcGVPREPfEEKQRIIGGSdADIKNFpQWVFDNPWAGGALINeYWVLTAAHVVEGNREPTMYVgST
SVQTSRLAKSKMLTPEHVF IHPGWKLLVEPEGRTNFDNDIALVRLKDPVKMGPTVSPICLPGTSSDYNLM
DGDGLISGWGRTEKRDRAVRLKAARLPVAPLRKCKEKVKEKPTADAEAYVFTPNM ICAGGEKGMDSCKG
DSGGAF AVQDPNDKTKFYAAGL VSWGPQCGTYGLYTRVKNYVDWIMKTMQENSTPRED
```

TRTRPLEQKLISEEDLANDILDYKDDDDKV

Chromatograms: https://cdn.origene.com/chromatograms/mk6163_e09.zip

Restriction Sites: SgfI-MluI

Cloning Scheme:



ACCN: NM_201442

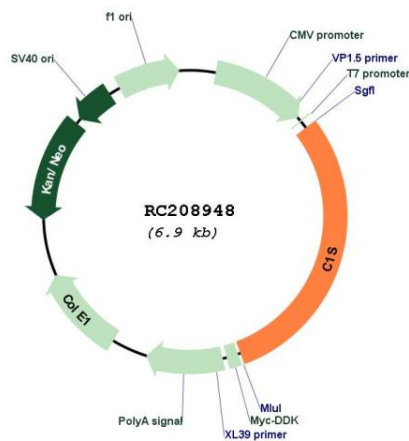
ORF Size: 2064 bp

OTI Disclaimer: The molecular sequence of this clone aligns with the gene accession number as a point of reference only. However, individual transcript sequences of the same gene can differ through naturally occurring variations (e.g. polymorphisms), each with its own valid existence. This clone is substantially in agreement with the reference, but a complete review of all prevailing variants is recommended prior to use. [More info](#)

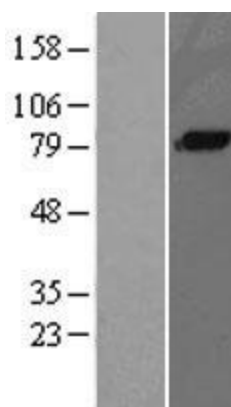
OTI Annotation: This clone was engineered to express the complete ORF with an expression tag. Expression varies depending on the nature of the gene.

Components:	The ORF clone is ion-exchange column purified and shipped in a 2D barcoded Matrix tube containing 10ug of transfection-ready, dried plasmid DNA (reconstitute with 100 ul of water).
Reconstitution Method:	<ol style="list-style-type: none"> 1. Centrifuge at 5,000xg for 5min. 2. Carefully open the tube and add 100ul of sterile water to dissolve the DNA. 3. Close the tube and incubate for 10 minutes at room temperature. 4. Briefly vortex the tube and then do a quick spin (less than 5000xg) to concentrate the liquid at the bottom. 5. Store the suspended plasmid at -20°C. The DNA is stable for at least one year from date of shipping when stored at -20°C.
RefSeq:	<u>NM_201442.4</u>
RefSeq Size:	2850 bp
RefSeq ORF:	2067 bp
Locus ID:	716
UniProt ID:	<u>P09871</u>
Cytogenetics:	12p13.31
Protein Families:	Druggable Genome, Protease
Protein Pathways:	Complement and coagulation cascades, Systemic lupus erythematosus
MW:	76.7 kDa
Gene Summary:	This gene encodes a serine protease, which is a major constituent of the human complement subcomponent C1. C1s associates with two other complement components C1r and C1q in order to yield the first component of the serum complement system. Defects in this gene are the cause of selective C1s deficiency. [provided by RefSeq, Mar 2009]

Product images:



Circular map for RC208948



Western blot validation of overexpression lysate (Cat# [LY400655]) using anti-DDK antibody (Cat# [TA50011-100]). Left: Cell lysates from untransfected HEK293T cells; Right: Cell lysates from HEK293T cells transfected with [RC218963] using transfection reagent MegaTran 2.0 (Cat# [TT210002]).