

Product datasheet for **RC208946**

UBE2M (NM_003969) Human Tagged ORF Clone

Product data:

Product Type: Expression Plasmids
Product Name: UBE2M (NM_003969) Human Tagged ORF Clone
Tag: Myc-DDK
Symbol: UBE2M
Synonyms: hUbc12; UBC-RS2; UBC12
Mammalian Cell Selection: Neomycin
Vector: pCMV6-Entry (PS100001)
E. coli Selection: Kanamycin (25 ug/mL)
ORF Nucleotide Sequence: >RC208946 representing NM_003969
Red=Cloning site Blue=ORF Green=Tags(s)

TTTTGTAATACGACTCACTATAGGGCGGCCGGAATTCGTCGACTGGATCCGGTACCGAGGAGATCTGCC
GCC**CGATCGCC**

ATGATCAAGCTGTTCTCGCTGAAGCAGCAGAAGAAGGAGGAGGAGTCCGCGGGCGGCCACCAAGGGCAGCA
GCAAGAAGGCGTCGGCGGCGCAGCTGCGGATCCAGAAGGACATAAACGAGCTGAACCTGCCCAAGACGTG
TGATATCAGCTTCTCAGATCCAGACGACCTCCTCAACTCAAGCTGGTCATCTGCTCTGATGAGGGCTTC
TACAAGAGTGGGAAGTTTGTGTTCAAGTTTAAAGGTGGGCCAGGGTTACCCGCATGATCCCCCAAGGTGA
AGTGTGAGACAATGGTCTATCACCCCAACATTGACCTCGAGGGCAACGTCTGCCTCAACATCCTCAGAGA
GGACTGGAAGCCAGTCTTACGATAAACTCCATAATTTATGGCCTGCAGTATCTCTCTTGAGGCCAAC
CCCAGGACCCACTGAACAAGGAGGCCGAGAGGTCTGCAGAACAACCGCGGGCTGTTTGAGCAGAACG
TGACAGCGCTCCATGCGGGGTGGCTACATCGGCTCCACCTACTTTGAGCGCTGCCTGAAA

ACGCGTACGCGGCCGCTCGAGCAGAACTCATCTCAGAAGAGGATCTGGCAGCAAATGATATCCTGGATT
ACAAGGATGACGACGATAAGGTTTAA

Protein Sequence: >RC208946 representing NM_003969
Red=Cloning site Green=Tags(s)

MIKLFSLKQQKKEEESAGGTGSSKKASAAQLRIQKDINELNPKTCDISFSDPDDLNFKLVICPDEGF
YKSGKVFVFSKVGQGYPHDPPKVKCETMVYHPNIDLEGNVCLNLRDWDKPVLTINSIIYGLQYLFLEPN
PEDPLNKEAAEVLQNNRRLFEQNVQSRMGYIGSTYFERCLK

TRTRPLEQKLISEEDLAANDILDYKDDDDKV

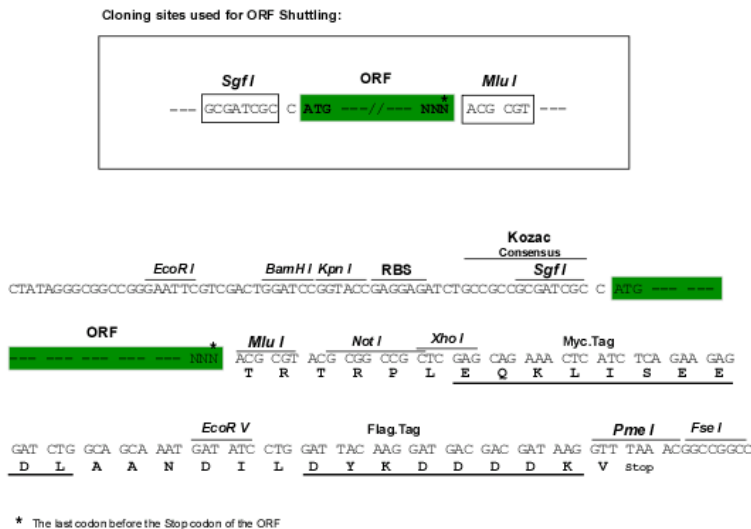
Chromatograms: https://cdn.origene.com/chromatograms/mg2875_a04.zip



[View online »](#)

Restriction Sites: SgfI-MluI

Cloning Scheme:



ACCN: NM_003969

ORF Size: 549 bp

OTI Disclaimer: The molecular sequence of this clone aligns with the gene accession number as a point of reference only. However, individual transcript sequences of the same gene can differ through naturally occurring variations (e.g. polymorphisms), each with its own valid existence. This clone is substantially in agreement with the reference, but a complete review of all prevailing variants is recommended prior to use. [More info](#)

OTI Annotation: This clone was engineered to express the complete ORF with an expression tag. Expression varies depending on the nature of the gene.

Components: The ORF clone is ion-exchange column purified and shipped in a 2D barcoded Matrix tube containing 10ug of transfection-ready, dried plasmid DNA (reconstitute with 100 ul of water).

Reconstitution Method:

1. Centrifuge at 5,000xg for 5min.
2. Carefully open the tube and add 100ul of sterile water to dissolve the DNA.
3. Close the tube and incubate for 10 minutes at room temperature.
4. Briefly vortex the tube and then do a quick spin (less than 5000xg) to concentrate the liquid at the bottom.
5. Store the suspended plasmid at -20°C. The DNA is stable for at least one year from date of shipping when stored at -20°C.

RefSeq: [NM_003969.4](#)

RefSeq Size: 1536 bp

RefSeq ORF: 552 bp

Locus ID: 9040

UniProt ID: [P61081](#)

Cytogenetics: 19q13.43

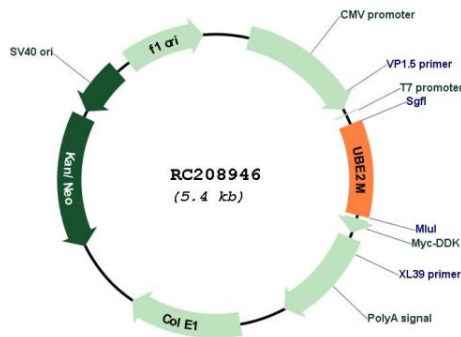
Domains: UBCc

Protein Pathways: Ubiquitin mediated proteolysis

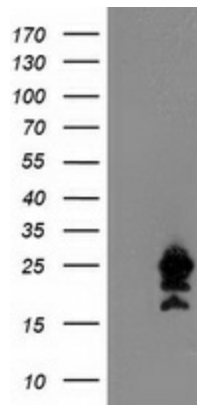
MW: 20.7 kDa

Gene Summary: The modification of proteins with ubiquitin is an important cellular mechanism for targeting abnormal or short-lived proteins for degradation. Ubiquitination involves at least three classes of enzymes: ubiquitin-activating enzymes, or E1s, ubiquitin-conjugating enzymes, or E2s, and ubiquitin-protein ligases, or E3s. This gene encodes a member of the E2 ubiquitin-conjugating enzyme family. The encoded protein is linked with a ubiquitin-like protein, NEDD8, which can be conjugated to cellular proteins, such as Cdc53/culin. [provided by RefSeq, Jul 2008]

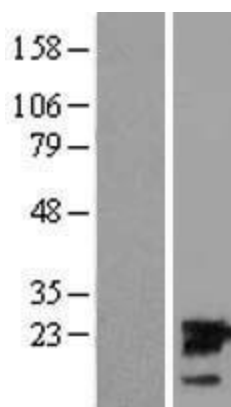
Product images:



Circular map for RC208946



HEK293T cells were transfected with the pCMV6-ENTRY control (Cat# [PS100001], Left lane) or pCMV6-ENTRY UBE2M (Cat# RC208946, Right lane) cDNA for 48 hrs and lysed. Equivalent amounts of cell lysates (5 ug per lane) were separated by SDS-PAGE and immunoblotted with anti-UBE2M(Cat# [TA503770]). Positive lysates [LY418316] (100ug) and [LC418316] (20ug) can be purchased separately from OriGene.



Western blot validation of overexpression lysate (Cat# [LY418316]) using anti-DDK antibody (Cat# [TA50011-100]). Left: Cell lysates from untransfected HEK293T cells; Right: Cell lysates from HEK293T cells transfected with RC208946 using transfection reagent MegaTran 2.0 (Cat# [TT210002]).