

Product datasheet for **RC208943**

NCR1 (NM_004829) Human Tagged ORF Clone

Product data:

Product Type: Expression Plasmids
Product Name: NCR1 (NM_004829) Human Tagged ORF Clone
Tag: Myc-DDK
Symbol: NCR1
Synonyms: CD335; LY94; NK-p46; NKP46
Mammalian Cell Selection: Neomycin
Vector: pCMV6-Entry (PS100001)
E. coli Selection: Kanamycin (25 ug/mL)
ORF Nucleotide Sequence: >RC208943 ORF sequence
 Red=Cloning site Blue=ORF Green=Tags(s)

TTTTGTAATACGACTCACTATAGGGCGGCCGGAATTCGTCGACTGGATCCGGTACCGAGGAGATCTGCC
 GCC**CGATCGCC**

ATGTCTTCCACACTCCCTGCCCTGCTCTGCGTCGGGCTGTGTCTGAGTCAGAGGATCAGCGCCCAGCAGC
 AGACTCTCCAAAACCGTTCATCTGGGCCGAGCCCATTTTCATGGTTCCAAAGGAAAAGCAAGTGACCAT
 CTGTTGCCAGGAAATTATGGGGCTGTTGAATACCAGCTGCACCTTGAAGGAAGCCTTTTGGCGTGGAC
 AGACAAAACCCCTGAGCGGATTAACAAAGTCAAATTCACATCCCGGACATGAACTCCCGCATGGCAG
 GGCAATACAGCTGCATCTATCGGGTTGGGGAGCTCTGGTCAGAGCCAGCAACTTCTGGATCTGGTGGT
 AACAGAAATGTATGACACACCCACCTCTCGGTTTCATCCTGGACCCGAAGTGATCTCGGGAGAGAAGGTG
 ACCTTCTACTGCCGTCTAGACACTGCAACAAGCATGTTCTTACTGCTCAAGGAGGGAAGATCCAGCCACG
 TACAGCGCGGATACGGAAGGTCCAGGCGGAGTCCCCCTGGGCCCTGTGACCACAGCCCACCGAGGGAC
 ATACCGATGTTTTGGCTCCTATAACAACCATGCCTGGTCTTTCCCGAGTGAGCCAGTGAAGCTCCTGGTC
 ACAGGCGACATTGAGAACACCAGCCTTGACCTGAAGACCCACCTTTCTGACACTGGGGCACCTACC
 TTTTAACCACAGAGACGGGACTCCAGAAAGACCATGCCCTCTGGGATCACACTGCCAGAATCTCCTTCG
 GATGGGCTGGCCTTTCTAGTCTGGTGGCTCTAGTGTGGTTCCTGGTTGAAGACTGGCTCAGCAGGAAG
 AGGACTAGAGAGCGAGCCAGCAGAGCTTCCACTGGGAAGGCAGGAGAAGGCTGAACACACAGACTCTT

ACGCGTACGCGGCCGCTCGAGCAGAAACTCATCTCAGAAGAGGATCTGGCAGCAAATGATATCCTGGATT
 ACAAGGATGACGACGATAAGGTTTAA



[View online »](#)

Protein Sequence: >RC208943 protein sequence
 Red=Cloning site Green=Tags(s)

MSSTLPALLCVGLCLSQRISAQQQLPKPFIWAEPHFMPKPKQVTICCGNYGAVEYQLHFEGSLFAVD
 RPKPPERINKVKFYIPDMNSRMAGQYSCIYRVGELWSEPSNLLDLVVTEMYDPTLSVHPGPEVISGEKV
 TFYCRDLTATSMFLLLKEGRSSHVQRGYGKVAEFLGPVTTAHRGTYRCFGSYNNHAWSPSEPVKLLV
 TGDIENTSLAPEDPTFPDWTGTYLLTTETGLQKDHALWDHTAQNLLRMGLAFLVLVALVWFLVEDWLSRK
 RTRERASRASTWEGRRRLNTQTL

TRTRPLEQKLISEEDLAANDILDYKDDDDKV

Chromatograms: https://cdn.origene.com/chromatograms/mk6353_g06.zip

Restriction Sites: SgfI-MluI

Cloning Scheme:

Cloning sites used for ORF Shuttling:



* The last codon before the Stop codon of the ORF

ACCN: NM_004829

ORF Size: 909 bp

OTI Disclaimer: The molecular sequence of this clone aligns with the gene accession number as a point of reference only. However, individual transcript sequences of the same gene can differ through naturally occurring variations (e.g. polymorphisms), each with its own valid existence. This clone is substantially in agreement with the reference, but a complete review of all prevailing variants is recommended prior to use. [More info](#)

OTI Annotation: This clone was engineered to express the complete ORF with an expression tag. Expression varies depending on the nature of the gene.

Components: The ORF clone is ion-exchange column purified and shipped in a 2D barcoded Matrix tube containing 10ug of transfection-ready, dried plasmid DNA (reconstitute with 100 ul of water).

Reconstitution Method:

1. Centrifuge at 5,000xg for 5min.
2. Carefully open the tube and add 100ul of sterile water to dissolve the DNA.
3. Close the tube and incubate for 10 minutes at room temperature.
4. Briefly vortex the tube and then do a quick spin (less than 5000xg) to concentrate the liquid at the bottom.
5. Store the suspended plasmid at -20°C. The DNA is stable for at least one year from date of shipping when stored at -20°C.

RefSeq: [NM_004829.7](#)

RefSeq Size: 1153 bp

RefSeq ORF: 915 bp

Locus ID: 9437

UniProt ID: [O76036](#)

Cytogenetics: 19q13.42

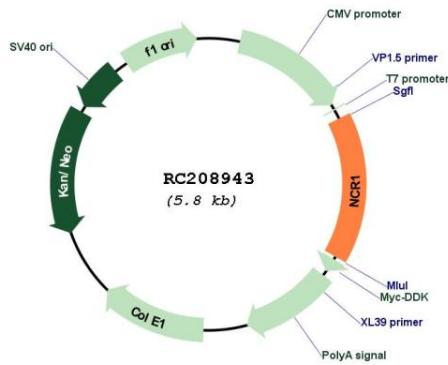
Protein Families: Druggable Genome, Transmembrane

Protein Pathways: Natural killer cell mediated cytotoxicity

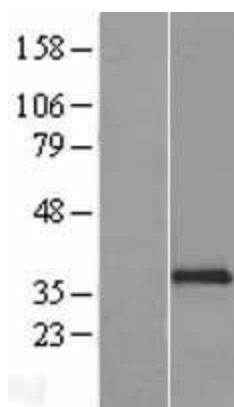
MW: 34.4 kDa

Gene Summary: Cytotoxicity-activating receptor that may contribute to the increased efficiency of activated natural killer (NK) cells to mediate tumor cell lysis.[UniProtKB/Swiss-Prot Function]

Product images:



Circular map for RC208943



Western blot validation of overexpression lysate (Cat# [LY417717]) using anti-DDK antibody (Cat# [TA50011-100]). Left: Cell lysates from untransfected HEK293T cells; Right: Cell lysates from HEK293T cells transfected with RC208943 using transfection reagent MegaTran 2.0 (Cat# [TT210002]).