

Product datasheet for RC208942

SREBP2 (SREBF2) (NM_004599) Human Tagged ORF Clone

Product data:

Product Type:	Expression Plasmids
Product Name:	SREBP2 (SREBF2) (NM_004599) Human Tagged ORF Clone
Tag:	Myc-DDK
Symbol:	SREBP2
Synonyms:	bHLHd2; SREBP-2; SREBP2
Mammalian Cell Selection:	Neomycin
Vector:	pCMV6-Entry (PS100001)
E. coli Selection:	Kanamycin (25 ug/mL)
ORF Nucleotide Sequence:	>RC208942 representing NM_004599 Red=Cloning site Blue=ORF Green=Tags(s)

TTTTGTAATACGACTCACTATAGGGCGGCCGGAATTCGTCGACTGGATCCGGTACCGAGGAGATCTGCC
GCC**CGATCGCC**

ATGGACGACAGCGGGAGCTGGGTGGTCTGGAGACCATGGAGACCCTCACGGAGCTGGGCGACGAGCTGAC
CCCTGGGAGACATCGACGAGATGCTGCAATTTGTCAGTAATCAAGTGGGAGAGTTCCTGACTTGTTTTTC
AGAACAGCTGTGTAGCTCCTTTCTGGCAGTGGTGGTAGTGGTAGCAGCAGCGGCAGCAGTGGCAGCAGC
AGCAGCAGCAGCAATGGCAGGGCAGCAGCAGCGGAGCTGTGGACCCTTCAGTGCACCGGTATTACCC
AGGTCACATTACCTTCTCTCCCTCGGCGGCCTCCACAGGCTCCAACCTGCAAGTCAAGGTTTTTC
TCCACCTCAGTTCCACACACCCAGGGCAACTCTATTCTTCAGCCCCGCCCCAGCCCCAGCCTCAA
CCTCAAACCTCAGCTGCAACAACAGACGGTAATGATCACGCCAACATTCAGCACCACTCCGACAGCAGGA
TCATCCAGCAGCCTTTGATATACCAGAATGCAGCTACTAGCTTTCAAGTCTTCAGCCTCAAGTCCAAAAG
CCTGGTGACATCCTCCAGGTACAGCCGGTACCATTAGCAGCAGGTGCAGACAGTACAGGCCAGCGG
GTGCTGACAAAACGGCCAATGGCAGCTGCAGACCCTTGCCCCGGTACGGTGCAGACAGTTGTGCGC
CACAGGTGCAGCAGGTCCCGTCTGGTCCAGCCTCAGATCATCAAGACAGATTCCTTTGTTTTGACCAC
ACTGAAGACAGATGGCAGCCCTGTTATGGCTGCGGTCCAGAACCAGCCCTCACCAGCCCTCACCACCCT
ATCCAGACGGCTGCCCTTCAAGTACCAACCCTGGTGGGAGCAGTGGGACCATTCTGACCAATGCCTG
TAATGATGGGGCAAGAGAAAGTGCCATTAAAGCAGGTACCTGGGGAGTCAAGCAGCTTGAGCCCCCAA
AGAAGGAGAAAAGGCGGACAACCCATAATATCATTGAGAAAACGATATCGCTCCTCCATCAATGACAAAATC
ATCGAATTGAAAGACCTGGTTCATGGGACAGACGCAAGATGCACAAGTCTGGCCTTCTGAGGAAGGCCA
TTGATTACATCAATACTTGCAGCAGGTCAATCATAACTGCGCCAGGAGAACATGGTGTGAAGCTGGC
AAATCAAAAGAACAAGCTTCTAAAGGGCATCGACCTAGGCAGTCTGGTGGACAATGAGGTGGACCTGAAG
ATCGAGGACTTTAATCAGAATGTCCTTCTGATGTCCCCCAGCCTCTGACTCAGGGTCCCAGGCTGGCT
TCTCTCCCTACTCATTGACTCTGAGCCAGGAAGCCCTCTATTGGATGATGCAAAGGTCAAAGATGAGCC
AGACTCTCTCTGTGGCCTGGCATGGTAGACCCTCACGGATTCTTCTGTGTCTCACCTTCTCT



View online »

TGCCTCTCCTTTAACCCCTGACTTCCTGCTGCAGTGGGGAGGGGCCACGACTCTGACCAGCACCCAC
ACTCAGGCTCTGGCCGAGTGTCTGTCAATTCGAGTCAGGTTCTGGGGGCTGGTTTGACTGGATGATGCC
TACTCTTCTTTATGGCTGGTAAATGGTGTGATTGTCTGAGCGTCTTTGTGAAGCTTCTGGTTCATGGG
GAGCCAGTGATCCGGCCACACTCGCGCTCTCGGTACCTTCTGGAGGCACCGGAAACAGGCAGATCTGG
ATCTCGCCAGAGGAGATTTGCAGCTGCTGCCGCAACCTACAAACCTGCCTGGCAGTTTTGGGCCGGG
ACTGCCACCTCCCGCTGGACCTGGCCTGCAGCTCTCTGGAACGTGATCCGCTACAGCCTGAGAAG
CTACGCTGGTGGCTGGCTGCTCAAGAAAGTCTCCAGTCCGGCGGGCCACGCCAGCCACTGAGGCAG
GCTTTGAAGACGAAGCTAAGACCAGCGCCGGGATGCGGCTCTGGCCTATCACCGGCTGCACCAGCTGCA
CATCACAGGGAAGCTTCTGCAGGATCCGCTGTTCCGATGTACACATGGCGTTGTGTGCCGTGAACCTG
GCTGAATGTGCAGAGGAGAAGATCCACCGAGCACACTGGTTGAGATCCATCTGACTGCTGCCATGGGGC
TCAAGACCCGGTGTGGAGGCAAGCTGGGCTTCTGGCCAGCTACTTCTCAGCCGAGCCAGAGCCTGTG
TGGCCCCGAGCACAGTGTCTTCTGACTCCCTGCGCTGGCTCTGCCACCCCTGGGCCAGAAGTTTTTC
ATGGAGCGGAGTGGTCTGTGAAGTCAGCTGCCAAGGAGAGTCTATACTGTGCCAGAGGAACCCAGCTG
ACCCATTGCGCAGTCCACCAGGCTTCTGCAAGAACCTGCTGGAGCGAGCTATAGAGTCTTGGTGAA
ACCTCAGGCCAAGAAGAAGGCTGGAGACCAGGAAGAAGAGAGCTGTGAATTCTCCAGTGTCTGGAGTAC
TTGAAATTACTTCACTTTTGTGGACTCTGTGGGGTTATGAGCCCCCACTCTCCAGGAGCTCCGTGC
TCAAGTCCGCCCTGGGTCCAGACATCATCTGTCGGTGGTGGACGTCTGCAATCACTGTGGCCATCAGCTG
GCTCCAGGGAGACGATGCAGCTGTGCGCTCTCATTTTACCAAAGTGAACGCATCCCAAGGCCCTGGAA
GTGACAGAGAGCCCCCTGGTGAAGGCCATCTTCCATGCCTGCAGAGCCATGCATGCCTCACTCCCTGGGA
AAGCAGATGGGCAGCAGAGTTCCTTCTGCCATTGCGAGAGGGCCAGTGGCCACCTATGGAGCAGCCTCAA
CGTCAGTGGGGCCACCTCTGACCCTGCCCTCAACCACGTGGTCCAGCTGCTCACCTGTGACCTGCTACTG
TCGCTACGGACAGCGCTCTGGCAAAAACAGGCCAGTGGCAGCCAGGCTGTGGGGGAGACCTACCACGCGT
CAGGCGTGAAC TGGCGGGCTTCCAACGGGACCTGGGCAGCCTGCGCAGGCTGGCACACAGCTTCCGCCC
AGCATAACCGCAAGGTGTTCTGATGAAGCCACCGTGCCTGATGGCAGGAGCCAGCCCCACCCGACC
CACCCAGCTGTGGAACACAGCCTGCGGGCGCACCCACGAGAGCACAAGCACGGAGAGGTGGATGCCT
GGCCCCGGCCAGCAGAGCGGGCCACCGCATCCTGCTGGCCTGCCGCCACCTGCCCTCTCTTCTCTC
CTCCCCGGCCAGCGGGCAGTGTGCTGGCCGAAGCTGCCCGCACCTGGAGAAGGTGGGCGACCGGCGC
TCCTGCAACGACTGCCAGCAGATGATTGTTAAGCTGGTGGTGGCACTGCCATTGCCGCTCC

AGCGGACCGACGCGTACGCGGCCGCTCGAGCAGAAACTCATCTCAGAAGAGGATCTGGCAGCAAATGATATCC
TGGATTACAAGGATGACGACGATAAGGTTTAA

Protein Sequence: >RC208942 representing NM_004599
 Red=Cloning site Green=Tags(s)

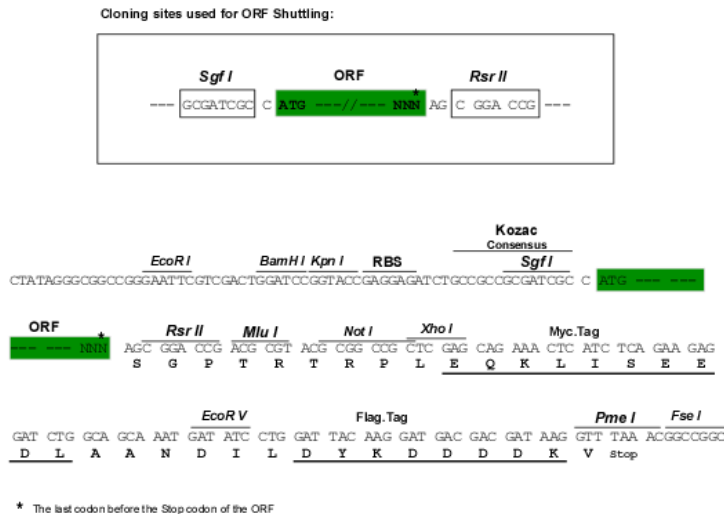
MDDSGELGGLETMETL TELGDEL TLGDIDEMLQFVSNQVGEFPDLFSEQLCSSFPGSGGSGSSGSSGSS
 SSSSNRGRSSSGAVDPSVQSRFTQVTLPSFSPSAASPQAPTLQVKVSPTSVPTTTPRATPILQPRPQPQPQ
 PQTQLQQQTVMITPTFTSTTPQTRIIQQPLIYQNAATSFQVLQPQVQSLVTSQVQPVTIQQVQVTVQAQR
 VLTQTANGTLQTLAPATVQTVAAPOVQVQVPLVQPQIIKTDLSLVTTLKTDGSPVMAAVQNPALTATTP
 IQTAALQVPTLVGSSGTLTTPVMMGQEKVPIKQVPGGVKQLEPPKEGERRTTHNIIIEKRYRSSINDKI
 IELKDLVMGTDAMHKSGVLRKAIDYIKYLQQVNHKLRQENMVLKLANQKNKLLKIDLGSLVDNEVDLK
 IEDFNQNVLLMSPPADSGSQAGFSPYSIDSEPGSPLDDAKVKDEPDSPPVALGMVDRSRILLCVLTF
 CLSFNPLTSLQWGGAHDSQHPHSGSGRSVLSFESGSGGWFDMMPTELLWL VNGVIVLSVFV KLLVHG
 EPVIRPHSRSSVTFWRHRKQADLDLARGDFAAAGNLQTCLAVLGRALPTSRLDLACSLSWNVIRYSLQK
 LRLVRWLLKKVFQCRRAPATEAGFEDEAKTSARDAALAYHRLHQLHITGKLPAGSACSDVHMACAVNL
 AECAEEKIPPSTLVEIHLTAAMGLKTRCGKLGFLASYFLSRAQSLCGPEHSAPVPSLRLWCHPLGQKFF
 MERSWSVKSAAKESLYCAQRNPADPIAQVHQAFCKNLLERAIESLVKPKAKKAGDQEEESCEFSSALEY
 LKLLHSFVDSVGMSPPLSRSSVLKLSALGPDIIICRWWSAITVAISWLQGDAAVRSHTKVERIPKALE
 VTESPLVKAIFHACRAMHASLPGKADGQSSFCERASGHLWSSLNVSGATSDPALNHVVQLLTCDLLL
 SLRTALWQKQASASQAVGETYHASGAELAGFQRDLGSLRRLAHSFRPAYRKVFLHEATVRLMAGASPTRT
 HQLLEHSLRRRTTQSTKHGEVDAWPGQERERATAILLACRHLPLSFLSSPGQRAVLLAEAARTLEKVGDRR
 SCNDCQMIKVLGGGTAAAS

SGPTRRRLEQKLI SEEDLAANDILDYKDDDDKV

Chromatograms: https://cdn.origene.com/chromatograms/mg3807_b09.zip

Restriction Sites: SgfI-RsrII

Cloning Scheme:



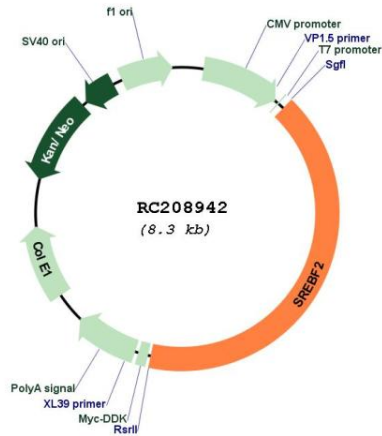
ACCN: NM_004599

ORF Size: 3423 bp

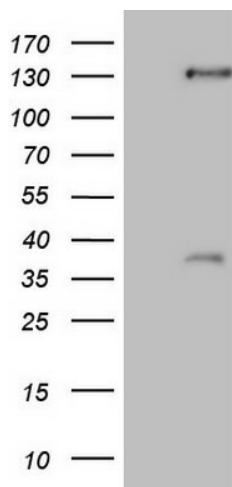
OTI Disclaimer:	Due to the inherent nature of this plasmid, standard methods to replicate additional amounts of DNA in E. coli are highly likely to result in mutations and/or rearrangements. Therefore, OriGene does not guarantee the capability to replicate this plasmid DNA. Additional amounts of DNA can be purchased from OriGene with batch-specific, full-sequence verification at a reduced cost. Please contact our customer care team at custsupport@origene.com or by calling 301.340.3188 option 3 for pricing and delivery.
	The molecular sequence of this clone aligns with the gene accession number as a point of reference only. However, individual transcript sequences of the same gene can differ through naturally occurring variations (e.g. polymorphisms), each with its own valid existence. This clone is substantially in agreement with the reference, but a complete review of all prevailing variants is recommended prior to use. More info
OTI Annotation:	This clone was engineered to express the complete ORF with an expression tag. Expression varies depending on the nature of the gene.
Components:	The ORF clone is ion-exchange column purified and shipped in a 2D barcoded Matrix tube containing 10ug of transfection-ready, dried plasmid DNA (reconstitute with 100 ul of water).
Reconstitution Method:	<ol style="list-style-type: none"> 1. Centrifuge at 5,000xg for 5min. 2. Carefully open the tube and add 100ul of sterile water to dissolve the DNA. 3. Close the tube and incubate for 10 minutes at room temperature. 4. Briefly vortex the tube and then do a quick spin (less than 5000xg) to concentrate the liquid at the bottom. 5. Store the suspended plasmid at -20°C. The DNA is stable for at least one year from date of shipping when stored at -20°C.
Note:	Plasmids are not sterile. For experiments where strict sterility is required, filtration with 0.22um filter is required.
RefSeq:	NM_004599.4
RefSeq Size:	4325 bp
RefSeq ORF:	3426 bp
Locus ID:	6721
UniProt ID:	Q12772
Cytogenetics:	22q13.2
Domains:	HLH
Protein Families:	Druggable Genome, Transcription Factors
MW:	123.5 kDa

Gene Summary:

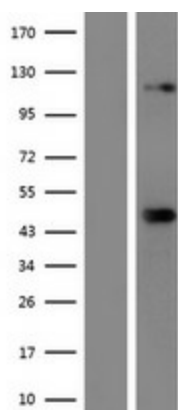
This gene encodes a member of the a ubiquitously expressed transcription factor that controls cholesterol homeostasis by regulating transcription of sterol-regulated genes. The encoded protein contains a basic helix-loop-helix-leucine zipper (bHLH-Zip) domain and binds the sterol regulatory element 1 motif. Alternate splicing results in multiple transcript variants. [provided by RefSeq, Jul 2013]

Product images:


Circular map for RC208942



HEK293T cells were transfected with the pCMV6-ENTRY control (Cat# [PS100001], Left lane) or pCMV6-ENTRY SREBF2 (Cat# RC208942, Right lane) cDNA for 48 hrs and lysed. Equivalent amounts of cell lysates (5 ug per lane) were separated by SDS-PAGE and immunoblotted with anti-SREBF2(Cat# [TA806342]). Positive lysates [LY417881] (100ug) and [LC417881] (20ug) can be purchased separately from OriGene.



Western blot validation of overexpression lysate (Cat# [LY417881]) using anti-DDK antibody (Cat# [TA50011-100]). Left: Cell lysates from untransfected HEK293T cells; Right: Cell lysates from HEK293T cells transfected with RC208942 using transfection reagent MegaTran 2.0 (Cat# [TT210002]).