

Product datasheet for RC208933

CTR9 (NM_014633) Human Tagged ORF Clone

Product data:

Product Type:	Expression Plasmids
Product Name:	CTR9 (NM_014633) Human Tagged ORF Clone
Tag:	Myc-DDK
Symbol:	CTR9
Synonyms:	p150; p150TSP; SH2BP1; TSBP
Mammalian Cell Selection:	Neomycin
Vector:	pCMV6-Entry (PS100001)
E. coli Selection:	Kanamycin (25 ug/mL)
ORF Nucleotide Sequence:	>RC208933 representing NM_014633 Red=Cloning site Blue=ORF Green=Tags(s)

TTTTGTAATACGACTCACTATAGGGCGGCCGGAATTCGTCGACTGGATCCGGTACCGAGGAGATCTGCC
GCC**CGATCGCC**

ATGTCGGGGGCTCCATCGAGATCCCCTCCGGGACACTGACGAGGTCATTGAACTTGACTTCGATCAGT
TACCGGAGGGAGATGAAGTTATCAGTATTCTGAAACAGGAACACACAACACTGCACATATGGATTGCTTT
GGCGCTGGAATACTACAAGCAAGGAAAAACAGAAGAGTTGTAAAATTGTTGGAAGCAGCAGTATAGAT
GGCAATTTGGACTATAGAGACCATGAAAAAGACCAGATGACTTGCTTGGATACATTGGCAGCGTATTATG
TACAACAGGCTCGAAAAGAAAAGAATAAGGACAATAAAAAGGATCTTATTACACAGGCCACCTTGTGTGA
TACAATGGCCGATAAAATTATTATGTATGATCAGAACCATTTGTTGGGAAGAGCCTGCTTCTGCCTACTT
GAGGGTGACAAAATGGATCAAGCTGATGCACAGTTTCATTTTGTACTCAATCAGTCTCCAATAATATTC
CAGCCCTTCTGGTAAAGCTTGCAATTCCTTCAACAAGAAGGATTACAGAGGAGCTCTTGCTTACTATAA
GAAAGCATTGCGTACTAACCAGGATGTCCAGCGGAAGTTCGTTTAGGAATGGGTCATTGCTTTGTGAAA
CTTAACAAACTGGAAAAGCTCGTCTGGCATTCCAGCAGAGCCCTGGAACCAATTCCAATGCGTGGGAG
CATTGGTTGGACTGGCTGTTCTAGAACTCAACAATAAAGAGGCTGATTCCATTAATAATGGTGTCCAGCT
TCTTCCAGAGCCTATACTATTGATCCTAGCAACCCTATGGTATTGAACCATTTGGCAAATCACTTTTTTC
TTCAAAAAGGATTATAGTAAAGTCCAGCATCTGGCCCTCCATTCATAATACAGAAGTGAAGCTA
TGCAAGCAGAGAGCTGCTATCAGCTAGCTAGATCATTCCATGTTTCAGGAAGATTATGACCAAGCTTTTCA
GTAATAATCAAGCCACACAGTTTGCCTCATCTCTTTTGTGCTCCCATTTTTTGGTTTGGGACAAATG
TATATTTATCGAGGTGACAAAGAAAATGCATCTCAGTGTCTTGGAAAGGTTTTGAAAGCTTATCCTAATA
ATTACGAAACTATGAAAATTCGCGCTCTCTATGCTGCCTCAGAAGATCAAGAAAAACGAGATATTGC
CAAGGGCCATTTGAAGAAGGTCACAGAACAGTATCCCGATGATGTTGAAGCTTGGATTGAATTGGCACAA
ATCTTAGAACAGACTGATACAGGGTGCCTTTCCAGCCTATGGAACAGCAACACGAATCCTTCAGGAGA
AAGTGCAGGCCGATGTTCTCCAGAGATTCTCAATAATGTGGGTGCCCTCCATTTAGACTTGGAAACCT
AGGGGAGGCTAAGAAATTTTTTGGCGTCATTGGACCGTCAAAAAGCAGAAGCGGAACATGATGAGCAT



TACTATAACGCCATTTCCGTTACCACGTCATATAATCTCGCCAGGCTATATGAGGCGATGTGTGAATTCC
ATGAAGCAGAAAACTGTATAAAAACTTTACGCGAACATCCTAATTATGTTGACTGCTATTTGCGCCT
AGGAGCCATGGCTAGAGATAAGGGAACTTTTATGAGGCTTCAGATTGGTTAAGGAAGCTTTCAGATT
AATCAGGATCATCCAGATGCTTGGTCTTTGATTGGCAATCTTCATTTGGCAAAACAAGAATGGGGTCTG
GGCAGAAGAAGTTTGAGAGGATATTAACACAGCCATCCACACAGAGTGATACCTATTCTATGCTAGCCCT
TGGCAACGTGTGGCTCCAACTTTACATCAGCCACCCGAGATCGAGAAAAGGAAAAGCGTCATCAAGT
CGTGCTCTGGCCATCTACAAACAAGTACTCAGAAATGATGCAAAGAATCTGTATGCTGCCAATGGCATAG
GAGCTGTTTTGGCCACAAAGGATATTTTCGTGAAGCTCGTGATGTATTTGCCCAAGTAAGAGAAGCAAC
AGCAGATATTAGTGATGTGTGGCTGAACTTAGCACACATCTATGTGGAGCAAAAGCAGTACATCAGCGCC
GTTCAGATGTATGAAAAGTGCCTCCGAAAGTTCTATAAGCACAAAACTGAAAGTTGACTCTATTTGG
CCCGGGCCCTCTCAAGTGTGGCAAGTTACAGGAATGCAAACAGACTTTGCTGAAGGCTAGACATGTGGC
ACCCAGTGATACAGTTCTTATGTTAATGTGGCCTTGGTCTGCAAAGATTAGCTACCTCTGTCTGAAA
GATGAAAAAGTAATCTGAAGGAAGTACTTAATGCTGTGAAAGAAGTGGAGCTTGACATAGATACTTCA
GTTATTTGAGTAAAGTGGGAGATAAAATGAGATTTGATTTGGCCCTTGCTGCTACAGAAGCCAGGCAGTG
TTCTGACTTACTGAGCCAGGCCAGTACCATGTGGCCCGGCACGCAAACAAGATGAAGAAGAGCGGGAG
CTGCGGGCCAAGCAAGAGCAAGAAAAGGAGCTGTTAAGGCAGAACTTCTTAAAGAACAGGAAGAGAAAAC
GTCTCAGAGAAAAGGAAGAGCAAAAAGAACTTTTGAACAGCGGGCCAGTATGTGGAGAAGACAAAAA
TATTCTTATGTTTACTGGTGAGACTGAAGCAACAAAAGAGAAGAAAAGAGGTGGTGGTGGTGGACGGCGT
TCTAAGAAGGGAGGAGAGTTTGATGAATTTGTCAATGATGACACTGATGATGACCTACCTATATCCAAAA
AGAAGAAGAGAAGAAAGGGTAGTGGCAGTGAACAAGAAGGTGAAGATGAGGAGGGTGGTGGAGAGAAAAGAA
GAAAAAGAGGAGAAGACATCCAAAGGGAGAAGAAGGATCTGATGATGATGAAACAGAAAAATGGCCCCAAA
CCAAAAAACGACGTCCACCAAAAGCAGAGAAGAAAAGGCTCCCAAGCCAGAACGTCTGCCTCCATCAA
TGAAGGGAAAAATAAAATCCAAAGCCATAATTTTCATCAAGTGTGACTCTTCGGATGAGGATAAACTTAA
AATTGCTGATGAAGGACATCCCAGGAACAGCAACAGCAACAGTACTCAGACGAGGACGAACAACGAAAG
AAATGTGCCTCATCAGAGAGTGATTCCGATGAGAACCAGAAACAAGTCTGGCAGCGAGGCCGGCAGTCCCC
GGAGGCCACGAAGACAGCGGTCCAGATCAGGACTCAGACAGTGACCAGCCATCCAGAAAAGAGAAGGCCCTC
CGGTTCTGAGCAGTCTGACAATGAATCTGTGCAGTCAAGGAGAAGCCACTCAGGAGTTTCTGAGAACGAC
TCTCGCCAGCTTCTCAAGTGCCGAATCAGATCACGAATCGGAGAGAGGATCTGATAATGAGGGTTCTG
GCCAAGGCTCTGAAAATGAATCGGAACAGAGGGATCCAACAATGAGGCCTCAGATAGAGGCTCAGAACA
TGGTCCAGATGATAGTGAC

ACGCGTACGCGGCCGCTCGAGCAGAACTCATCTCAGAAGAGGATCTGGCAGCAAATGATATCCTGGATT
ACAAGGATGACGACGATAAGGTTTAA

Protein Sequence: >RC208933 representing NM_014633
Red=Cloning site Green=Tags(s)

MSRGSIEIPLRDTDEVIELDFDQLPEGDEVISILKQEHTQLHIWIALALEYKQKGKTEEFVKLLEAARID
 GNLDYRDHEKDQMTCLDTLAAYYVQARKEKNKDNKKDLITQATLLYTMADKIIMYDQNHLLGRACFCLL
 EGDKMDQADAQHFVFLNQSPNNIPALLGKACISFNKKDYRGALAYYKALRTNPGCPAEVRLGMGHCFVK
 LNKLEKARLAFSRALELNSKCVGALVGLAVLELNNKEADSIKNGVQLLSRAYTIDPSNPMVLNHLANHFF
 FKDYKQVHLALHAFHNTEVEAMQAESCYQLARSFHVQEDYDQAFQYQYQATQFASSSFVLPFFGLGQM
 YIYRGDKENASQCFEKVLKAYPNNYETMKILGSLYAASEDQEKRDIAKGHLKQVTEQYPPDVEAWIELAQ
 ILEQTDIQGALSAYGTATRILQEKVQADVPPEILNNVGALHFRLGNLGEAKKYFLASLDRAKAEAEHDEH
 YYNAISVTTSYNLARLYEAMCEFHEAEKLYKNILREHPNYVDCYLRGAMARDKGNFYEASDWFKEALQI
 NQDHPDAWSLIGNLHLAKQEWGPGQKKFERILKQPSTQSDTYSMLALGNVWLQTLHQPTRDREKEKRHQD
 RALAIYKQVLRNDAKNL YAANGIGAVLAHKGYFREARDVFAQVREATADISDVWLNLAHIYVEQKQYISA
 VQMYENCLRKFYKHQNTVVLYLARALFKCGKLECKQTLKARHVAPSDTVLMFNVALVQLRLATSVLK
 DEKSNLKEVLNAVKELELAHRYFSYLSKVGDKMRFDLALAATEARQCSDLLSQAQYHVARARKQDEEERE
 LRAKQEQEKELLRQKLLKEQEEKRLREKEEQKLLLEQRAQYVEKTKNLMFTGETEATKEKKRGGGGRR
 SKKGGFDEFVNDTDDDLPI SKKKRRKSGSGEQEGEDEEGGERKKKRRRHPKGEESDDDETENGPK
 PKRRPPKAEEKKAPKPERLPPSMKGIKSKAIISSDDSSDEDKLIADGHPRNSNSNSDSEDEQPK
 KCASSESDENQNKSGSEAGSPRRPRRQRSDQSDSQPSRKRPPSGSEQSDNESVQSGRSHSGVSEND
 SRPASPAESDHESERGSNDESGQSGNESEPEGSNNEASDRGSEHGSDSDS

TRTRPLEQKLISEEDLAANDILDYKDDDDKV

Chromatograms: https://cdn.origene.com/chromatograms/mg2729_a02.zip

Restriction Sites: SgfI-MluI

Cloning Scheme:

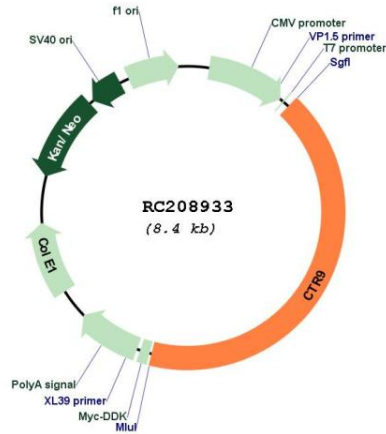


ACCN: NM_014633

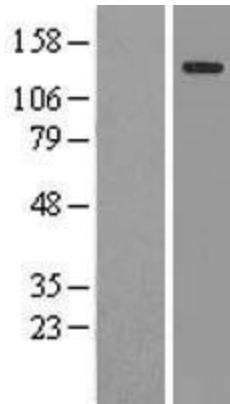
ORF Size: 3519 bp

OTI Disclaimer:	The molecular sequence of this clone aligns with the gene accession number as a point of reference only. However, individual transcript sequences of the same gene can differ through naturally occurring variations (e.g. polymorphisms), each with its own valid existence. This clone is substantially in agreement with the reference, but a complete review of all prevailing variants is recommended prior to use. More info
OTI Annotation:	This clone was engineered to express the complete ORF with an expression tag. Expression varies depending on the nature of the gene.
Components:	The ORF clone is ion-exchange column purified and shipped in a 2D barcoded Matrix tube containing 10ug of transfection-ready, dried plasmid DNA (reconstitute with 100 ul of water).
Reconstitution Method:	<ol style="list-style-type: none">1. Centrifuge at 5,000xg for 5min.2. Carefully open the tube and add 100ul of sterile water to dissolve the DNA.3. Close the tube and incubate for 10 minutes at room temperature.4. Briefly vortex the tube and then do a quick spin (less than 5000xg) to concentrate the liquid at the bottom.5. Store the suspended plasmid at -20°C. The DNA is stable for at least one year from date of shipping when stored at -20°C.
Note:	Plasmids are not sterile. For experiments where strict sterility is required, filtration with 0.22um filter is required.
RefSeq:	NM_014633.3
RefSeq Size:	4348 bp
RefSeq ORF:	3522 bp
Locus ID:	9646
UniProt ID:	Q6PD62
Cytogenetics:	11p15.4
Domains:	TPR
Protein Families:	Protease
MW:	133.3 kDa
Gene Summary:	The protein encoded by this gene is a component of the PAF1 complex, which associates with RNA polymerase II and functions in transcriptional regulation and elongation. This complex also plays a role in the modification of histones. [provided by RefSeq, Oct 2016]

Product images:



Circular map for RC208933



Western blot validation of overexpression lysate (Cat# [LY415153]) using anti-DDK antibody (Cat# [TA50011-100]). Left: Cell lysates from untransfected HEK293T cells; Right: Cell lysates from HEK293T cells transfected with RC208933 using transfection reagent MegaTran 2.0 (Cat# [TT210002]).